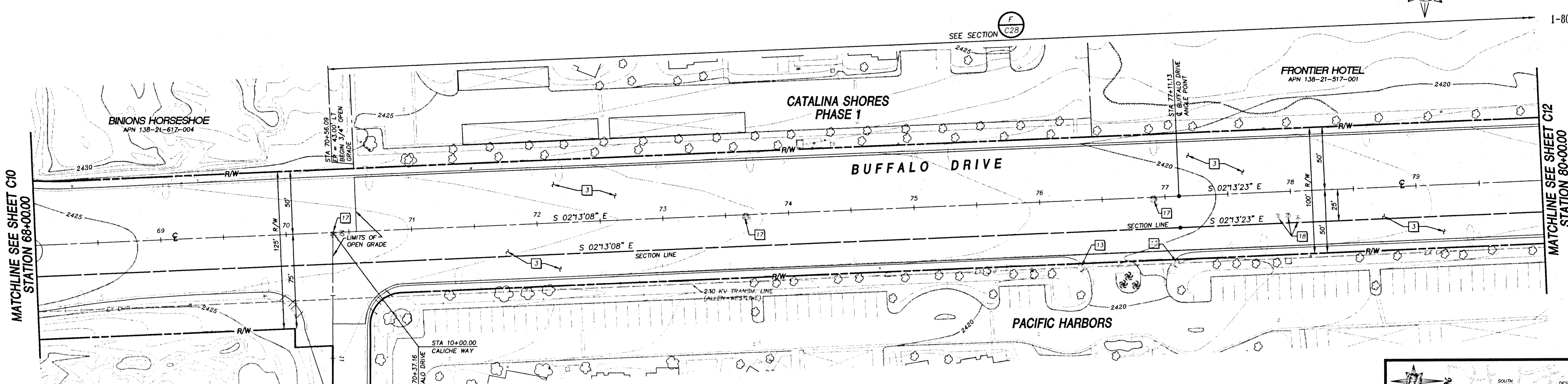
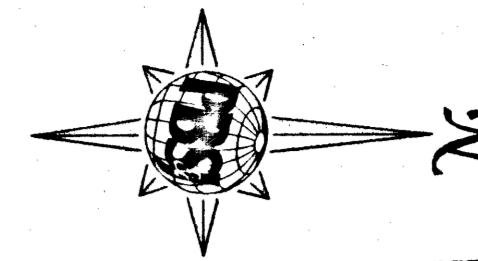
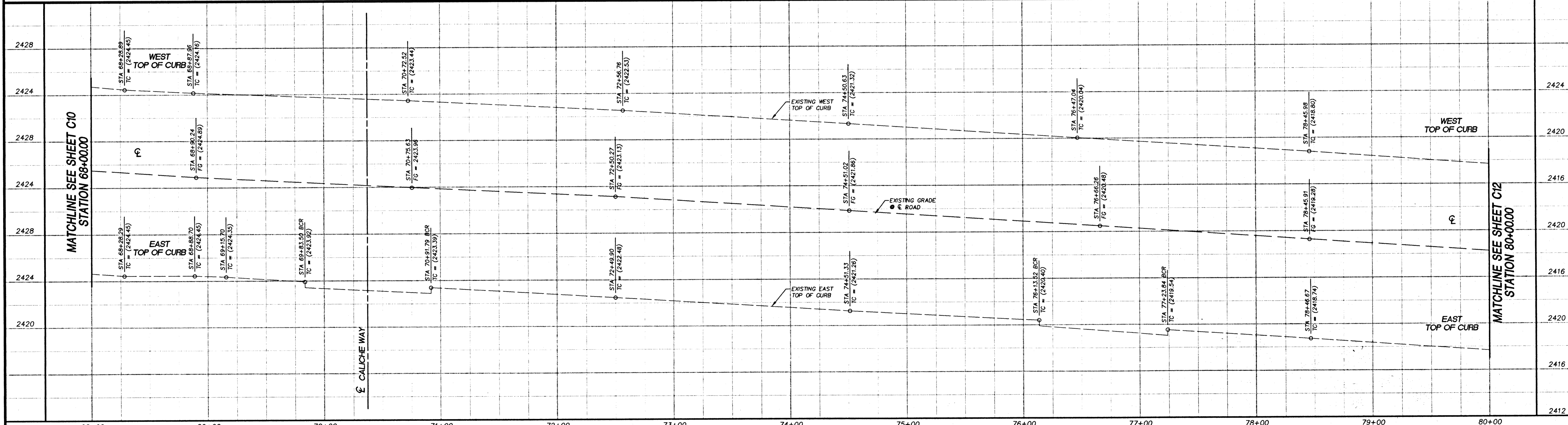
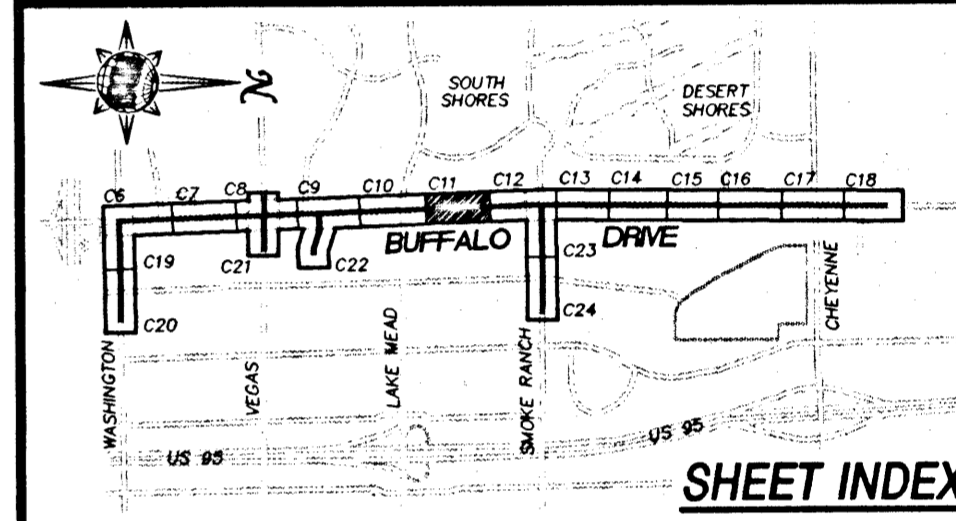


2.2-2-03

Call before you Dig
1-800-227-2600



- CONSTRUCTION ITEMS**
- 3 CONSTRUCT 3/4" OPEN GRADE
 - 13 REMOVE EXISTING SIDEWALK RAMP AND SIDEWALK AND REPLACE PER STD DWG #235 CASE 1 (A & B = 8' UNLESS OTHERWISE NOTED)
 - 15 ADJUST UTILITY MANHOLE TO PROPOSED FINISH GRADE
 - 17 ADJUST SANITARY SEWER MANHOLE TO PROPOSED FINISH GRADE
 - 18 ADJUST WATER VALVE TO PROPOSED FINISH GRADE



REVISIONS				
REV.	DESCRIPTION	BY	DATE	APPROVAL

Scale

HORIZONTAL : 1" = 40'
VERTICAL : 1" = 4'

Job No. 7158.705

901 North Green Valley Pkwy
Suite 300
Henderson, Nevada 89014
Telephone: 702/263-7275
Fax: 702/263-7200

ENGINEERING • PLANNING • SURVEYING • CONSTRUCTION SERVICES

Designed by : AAS	Date : 09/15/95
Drawn by : AAS	Date : 09/15/95
Checked by : WEH	Date : 09/15/95
File No. : 705IMP	Dwg No. : 705-C11

City of Las Vegas
BUFFALO DRIVE ROADWAY IMPROVEMENTS
BID No. 96.1730.35
BUFFALO DRIVE
PLAN AND PROFILE STA 68+00 TO STA 80+00

CITY OF LAS VEGAS DRAWING No. 107-V2314 SHEET C11 11/21

705-C11 Sun Oct 1 21:37:31 1995 P.B.S. & J. - LEE F.