

CRIBMARK
 OLVOO-32SES
 ELEVATION = 2660.524
 CITY OF LAS VEGAS VERTICAL CONTROL (20-60-SW B)
 RIVET AND PLATE IN TOP OF CURB, NORTHEAST RETURN OF CHARLESTON BOULEVARD AND DUANGO DRIVE.

EARTHWORK QUANTITY ESTIMATE

CUT	CY
FILL	CY
SUBSIDENCE ()	CY
SHRINKAGE ()	CY
TOTAL () FOR SITE	CY

NOTE TO CONTRACTOR: CONTRACTOR TO VERIFY QUANTITIES FOR BIDDING PURPOSES.

GRADING NOTES

- ALL GRADES SHOWN HEREON ARE TO FINISH GRADE.
- THE QUANTITIES SHOWN HEREON ARE ESTIMATES ONLY AND ARE NOT TO BE USED FOR BIDDING PURPOSES.
- CONTRACTORS SHALL VERIFY ALL CONDITIONS AND DIMENSIONS AND SHALL REPORT ALL DISCREPANCIES TO THE ENGINEER PRIOR TO THE COMMENCEMENT OF WORK.
- ALL CONSTRUCTION AND GRADING OPERATIONS ARE TO CONFORM TO THE RECOMMENDATIONS OF SOILS REPORT LISTED BELOW:

CONSTRUCTION NOTES

- CONSTRUCT "L" TYPE CURB & GUTTER PER U.S.D. #216
- CONSTRUCT "A" TYPE CURB PER U.S.D. #219
- CONSTRUCT 2" SIDEWALK UNDER-DRAIN PER U.S.D. #236
- CONSTRUCT 4' WIDE CONCRETE SIDEWALK PER U.S.D. #234
- CONSTRUCT 5' WIDE CONCRETE SIDEWALK PER U.S.D. #234
- CONSTRUCT 6' WIDE CONCRETE SIDEWALK PER U.S.D. #234
- CONSTRUCT 8' WIDE VALLEY GUTTER PER U.S.D. #228
- CONSTRUCT WHEELCHAIR RAMP PER U.S.D. #235, CASE 1, A=8'-B=8'
- CONSTRUCT 2" A.C. PAVEMENT UNDER 6" TYPE II GRAVEL BASE
- CONSTRUCT 4" PVC SIDEWALK UNDER-DRAIN PER DETAIL
- CONSTRUCT 2" WIDE VALLEY GUTTER PER DETAIL
- CONSTRUCT 2" DRAINAGE CHANNEL PER DETAIL
- CONSTRUCT WALL OPENING PER DETAIL
- CONSTRUCT WHEELCHAIR RAMP PER U.S.D. #235, CASE 1, A=4.5'-B=15'
- CONSTRUCT WALL OPENING PER DETAIL
- CONSTRUCT CRASH GATE PER C.L.V.F.D. STANDARDS

DISCLAIMER NOTE

UTILITY LOCATIONS SHOWN HEREON ARE APPROXIMATE ONLY. IT SHALL BE THE CONTRACTOR'S RESPONSIBILITY TO DETERMINE THE EXACT HORIZONTAL AND VERTICAL LOCATION OF ALL EXISTING UNDERGROUND UTILITIES PRIOR TO COMMENCING CONSTRUCTION. NO REPRESENTATION IS MADE THAT ALL EXISTING UTILITIES ARE SHOWN HEREON. THE ENGINEER ASSUMES NO RESPONSIBILITY FOR UTILITIES NOT SHOWN OR UTILITIES NOT SHOWN IN THEIR PROPER LOCATION.



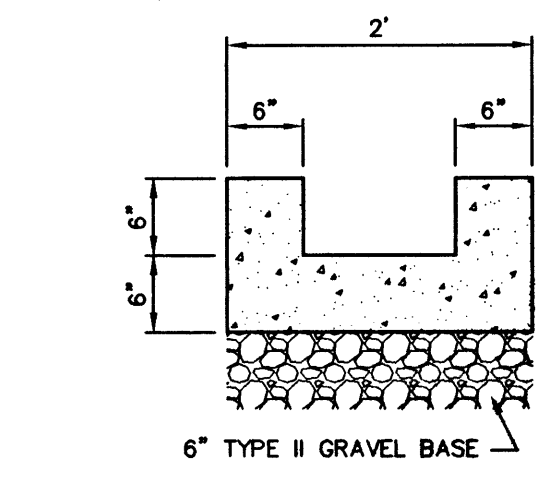
ENGINEERS CERTIFICATE

This is to certify that this Grading Plan is in compliance with the approved Drainage Study for this project on file with the City of Las Vegas.

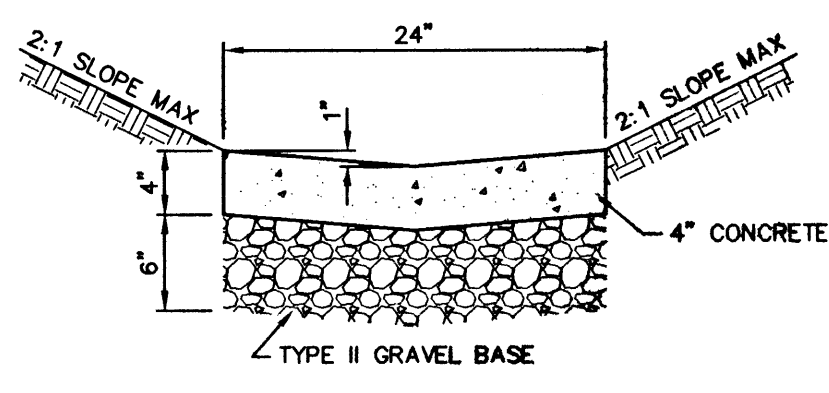
[Signature]
LARRY R. NELSON
 CIVIL ENGINEER
 LICENSE NO. 6182
 12/23/99

DESIGN CRITERIA

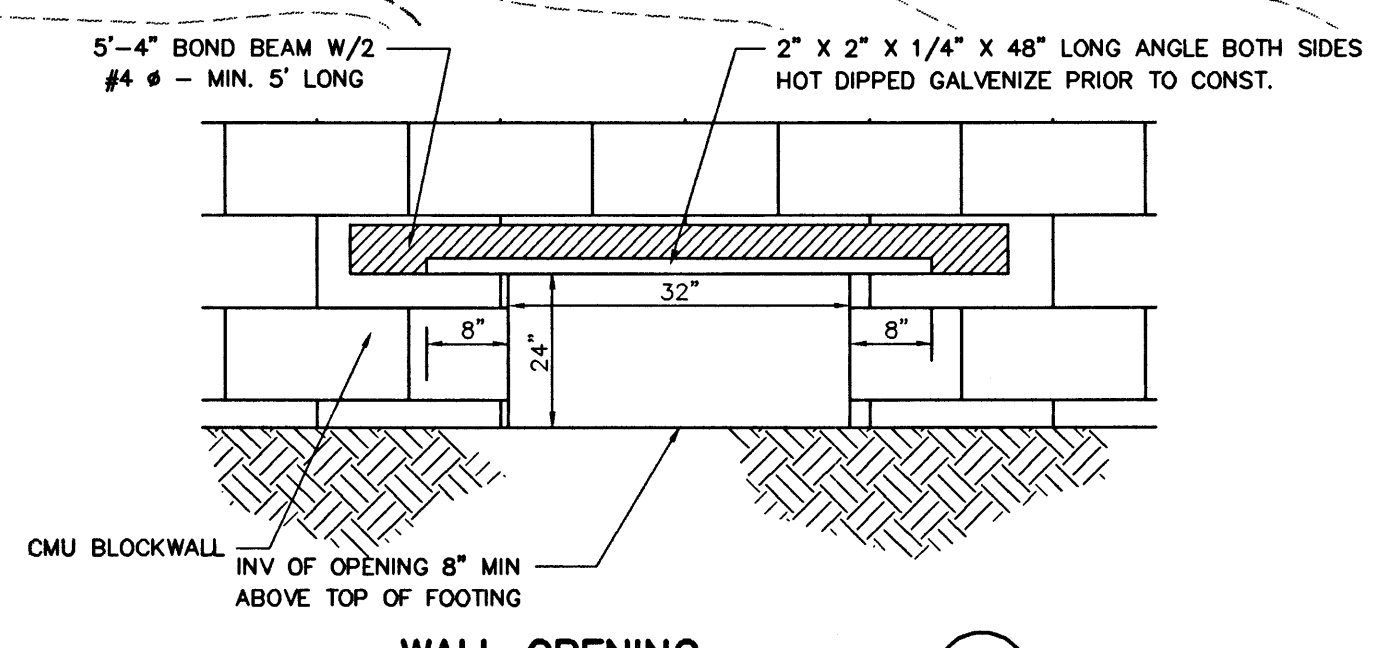
- ALLOW SOIL BEARING: 2000 PSF
- WIND: 75 MPH, EXPOSURE "B", 1991 U.B.C.
- CONCRETE BLOCK: $f_m=1500$ PSI
- CONCRETE: $f_c=2000$ PSI
- REINFORCING: ASTM A615, GRADE 40
- MORTAR: PARTS BY VOLUME=1 PORTLAND CEMENT, 1/3 HYDRATED LIME, 3 SAND, WATER AS REQUIRED FOR NORMAL TROWEL FLOW
- GROUT: PARTS BY VOLUME=1 PORTLAND CEMENT, 2 SAND, 1 PEA GRAVEL, WATER AS REQUIRED FOR CONSISTANCY FOR POURING WITHOUT SEGREGATION
- INSPECTION: AS REQUIRED BY THE GOVERNING MUNICIPALITY
- ALL SPLICED BARS SHALL LAP A MIN OF 40 BAR DIAMETERS
- STONE AND GEOTEXTILE FABRIC MAY BE OMITTED WHERE SOILS ENGINEER CONFIRMS BACKFILL MATERIAL HAS GOOD DRAINAGE



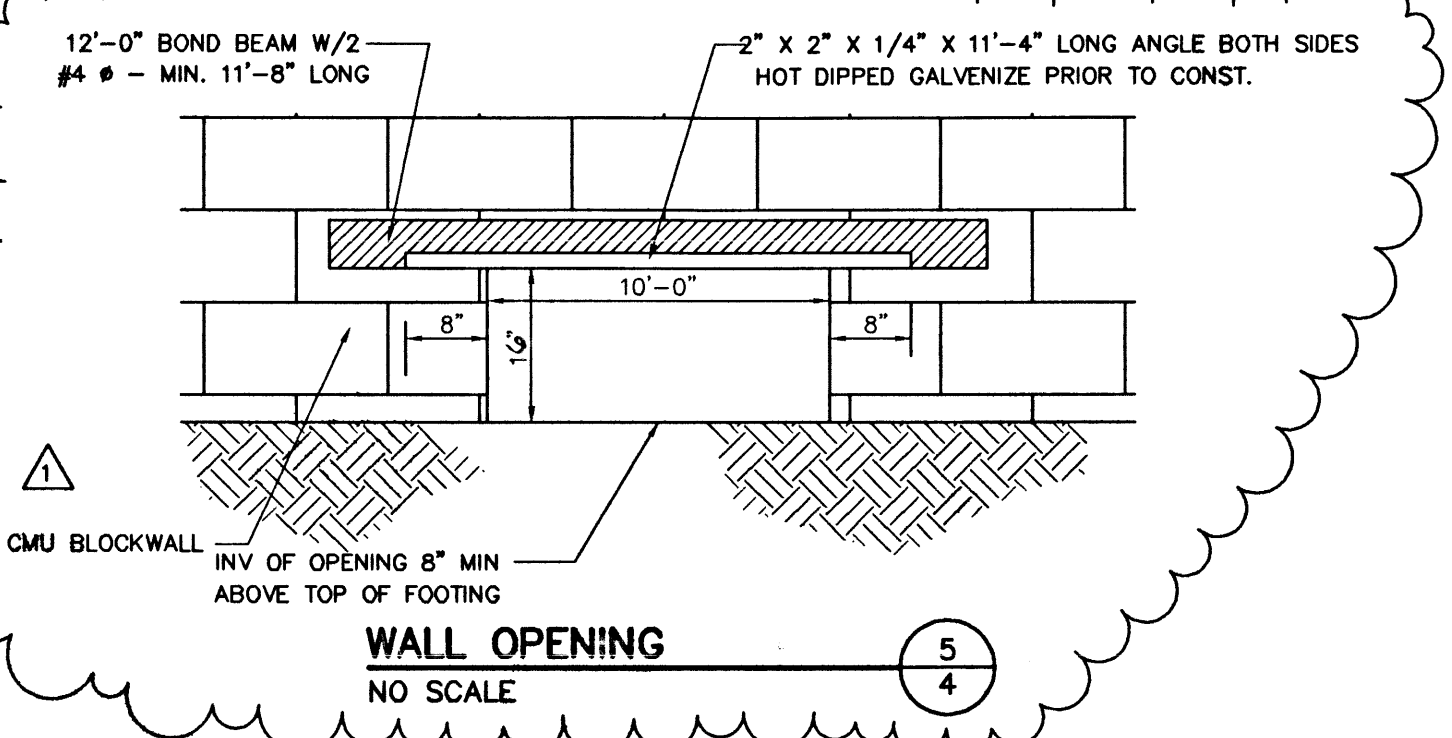
DRAINAGE CHANNEL
NO SCALE



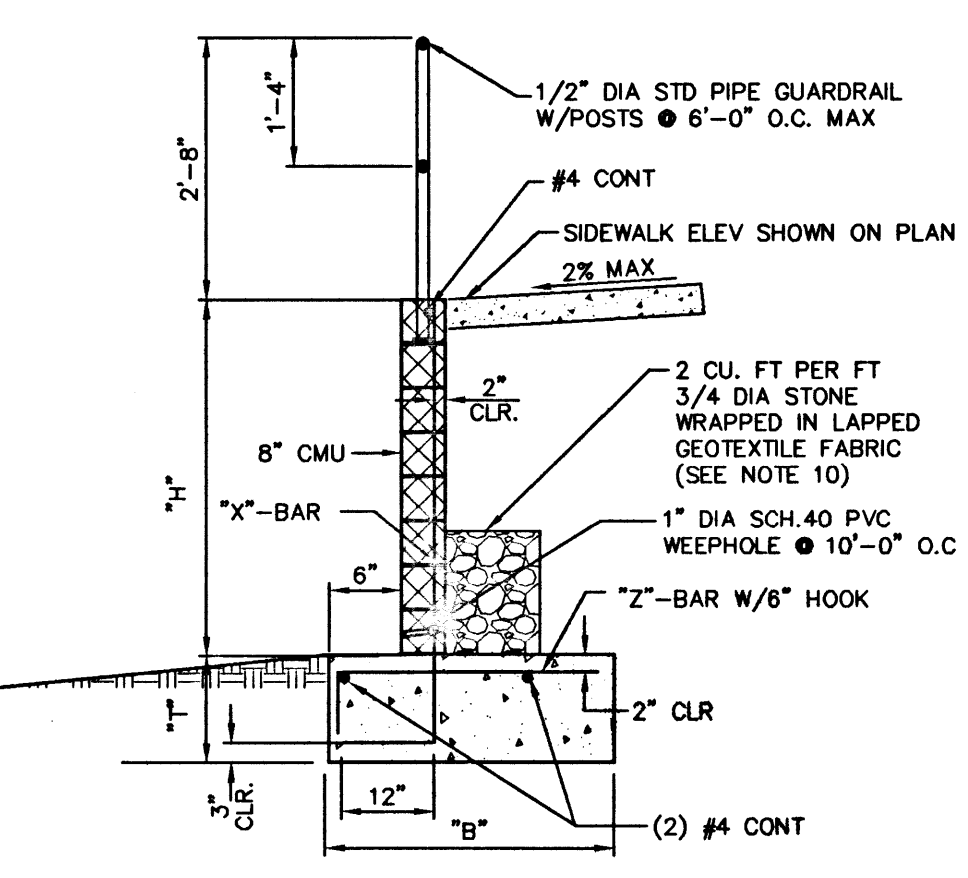
2" VALLEY GUTTER
NO SCALE



WALL OPENING
NO SCALE



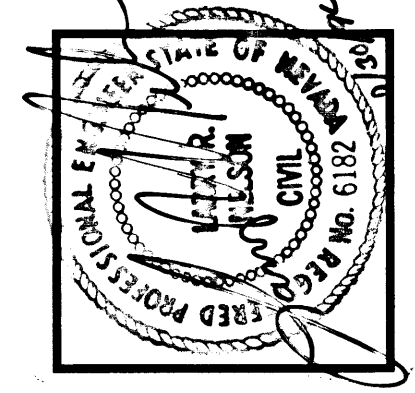
WALL OPENING
NO SCALE



RETAINING WALL
NO SCALE

"H"	"B"	"X"-BAR	"Z"-BAR	"T"
4'-0"	1'-9"	#4 @ 24" O.C.	#4 @ 24" O.C.	12"
2'-0"	1'-4"	#4 @ 48" O.C.	#4 @ 48" O.C.	12"

DRAWING NAME GRD-1 LATEST REVISION DATE 7-13-94



DESIGNED BY: PK	DRAWN BY: PA	CHECKED BY:
JOB NUMBER: 218-037-942	DATE: 5-11-94	
REVISION	DATE	APPL
1	7/13/94	
2		
3		
4		
5		

L. R. NELSON CONSULTING ENGINEERS, INC.
 • STRUCTURAL
 • CIVIL
 • SURVEY
 3035 East Patrick Lane Suite 9
 Las Vegas, Nevada 89120
 (702) 798-7978
 (702) 451-2296 FAX

GRADING PLAN - NORTH
CALICO CANYON APARTMENTS
 ROBERT V. JONES CORP.
 LAS VEGAS, NEVADA

SHEET NUMBER
4
 OF 10 SHEETS