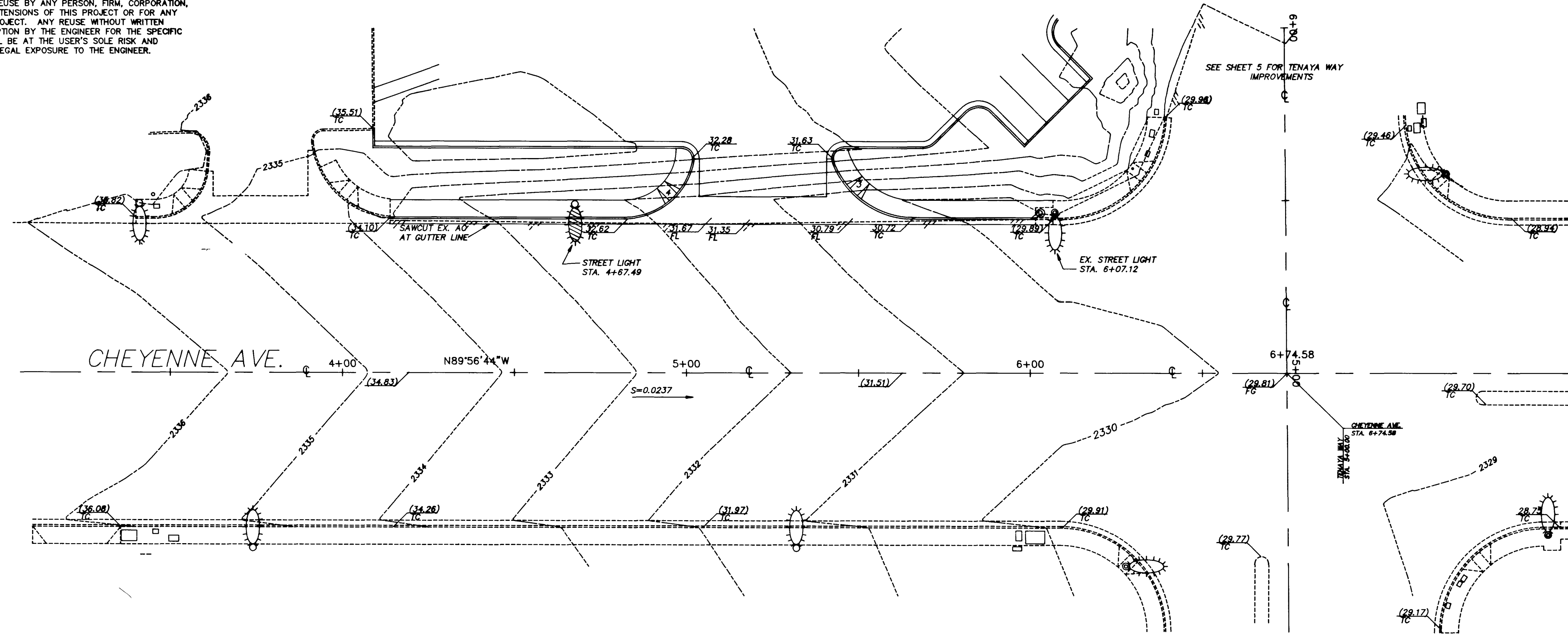


ANY INFORMATION OR DATE ON THIS DRAWING IS NOT INTENDED TO BE SUITABLE FOR REUSE BY ANY PERSON, FIRM, CORPORATION, OR ANY OTHERS ON EXTENSIONS OF THIS PROJECT OR FOR ANY USE ON ANY OTHER PROJECT. ANY REUSE WITHOUT WRITTEN VERIFICATION AND ADAPTION BY THE ENGINEER FOR THE SPECIFIC PURPOSE INTENDED WILL BE AT THE USER'S SOLE RISK AND WITHOUT LIABILITY OR LEGAL EXPOSURE TO THE ENGINEER.



RAMP NUMBER	A	B
3	12	4.5
4	8	8

BASIS OF BEARING
 SOUTH 89°56'44" EAST BEING THE SOUTH LINE OF THE SOUTHEAST QUARTER OF THE SOUTHWEST QUARTER OF SECTION 10, TOWNSHIP 20 SOUTH, RANGE 60 EAST, MOUNT Diablo BASE LINE AND MERIDIAN, AS SHOWN ON PARCEL MAP RECORDED IN FILE 69 AT PAGE 3 OF PARCEL MAPS, OFFICIAL RECORDS OF CLARK COUNTY, NEVADA.

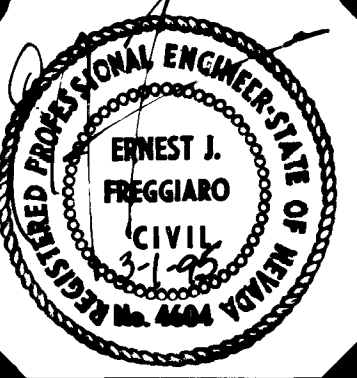
BENCHMARK
 CITY OF LAS VEGAS BENCHMARK NO. 0LV00 15M4 BEING A RIVET AND PLATE LOCATED IN THE TOP OF CURB IN FRONT OF FIRE STATION 42 ON THE SOUTH CURB LINE AT 7331 WEST CHEYENNE AVENUE. ELEVATION = 2333.431 ± 3.40'

Station	3+00	4+00	5+00	6+00	7+00	Station
2335			2335			2335
2333						2333
2331						2331
2329						2329
2335						2335
2333						2333
2331						2331
2329						2329

UTILITY NOTE
 UTILITY LOCATIONS SHOWN HEREON ARE APPROXIMATE ONLY. IT SHALL BE THE CONTRACTOR'S RESPONSIBILITY TO DETERMINE THE EXACT VERTICAL AND HORIZONTAL LOCATION OF ALL EXISTING UNDERGROUND UTILITIES PRIOR TO COMMENCING CONSTRUCTION. NO REPRESENTATION IS MADE THAT ALL EXISTING UTILITIES ARE SHOWN HEREON. THE ENGINEER ASSUMES NO RESPONSIBILITY FOR UTILITIES NOT SHOWN OR UTILITIES NOT SHOWN IN THEIR PROPER LOCATION.

CALL BEFORE YOU DIG
 1-800-227-2600

P.O. BOX 13438
 LAS VEGAS, NEVADA 89112
 (702) 434-9615



MARCH 1, 1995
 DRAWN BY: RHN
 DESIGNED BY: PMR
 CHECKED BY: EF
 SCALE HORIZ. 1"=20'
 SCALE VERT. 1"=2'
 FILE: 0302-CHE

CHEVRON HALLMARK 21
 PLAN AND PROFILE - CHEYENNE
 PREPARED FOR: SERVICE STATION MANAGEMENT

NO.	DATE	REVISIONS	DESCRIPTION	BY	APPROVAL

SHEET 6 OF 6

