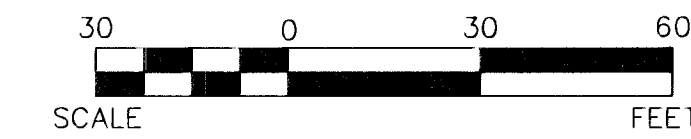
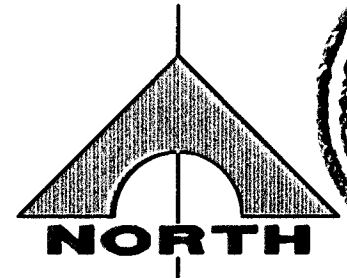
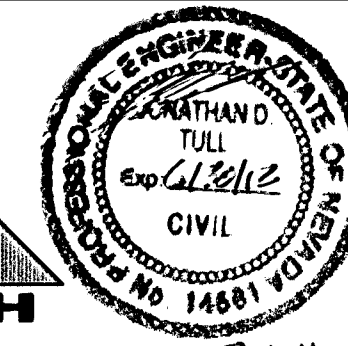
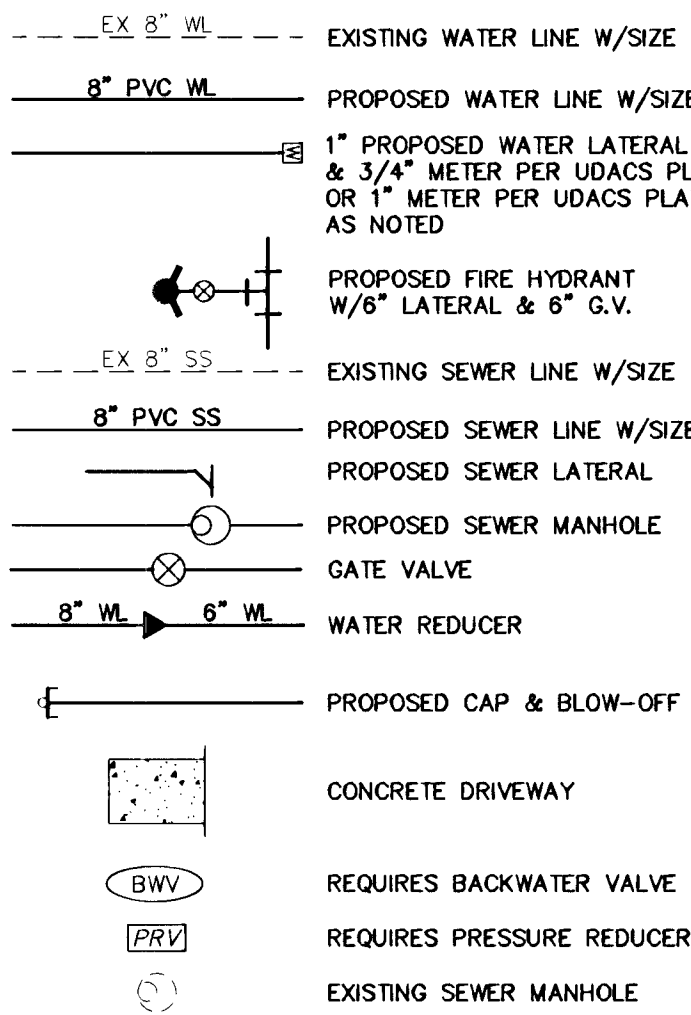


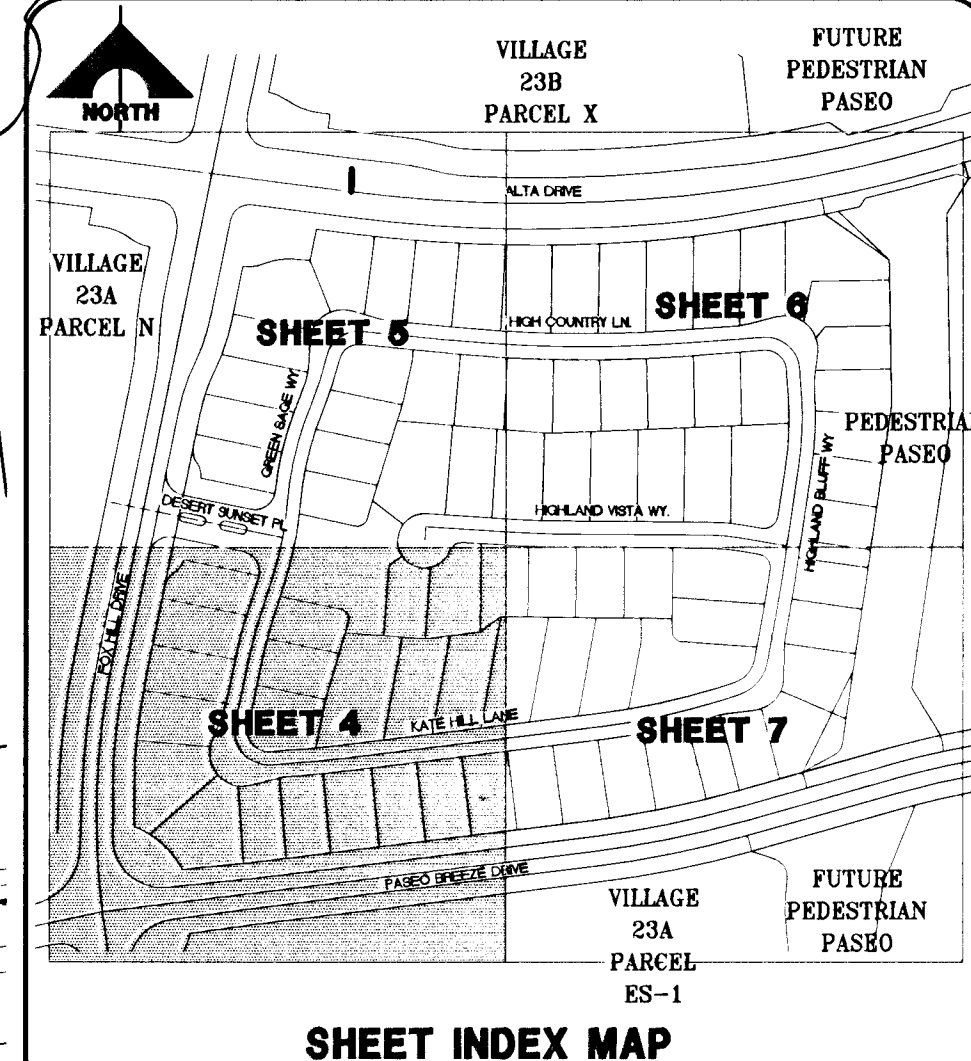
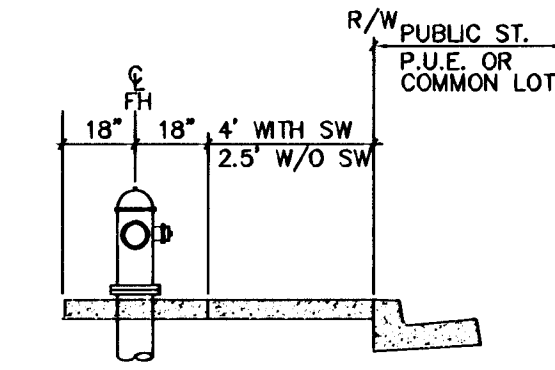
MATCHLINE SEE SHEET C5



UTILITY LEGEND



FIRE HYDRANT LOCATION DETAIL



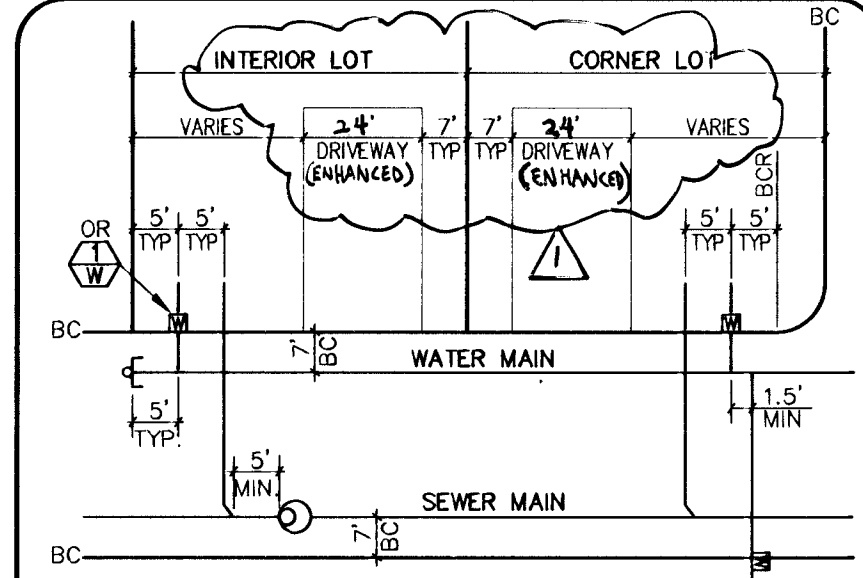
Tables for Water Control Line and Sewer Control Line, listing line lengths, bearings, and manhole elevations.

CONSTRUCTION NOTES

- List of construction notes including water meter installation, pipe bending, fire hydrant assembly, and storm drain requirements.

FIRE FLOW CALCULATIONS

Fire flow requirement is 1500 gallons per minute at 20 PSI. Square footage: less than 3,600 sq. ft.



BENCHMARK

Benchmark table with columns for BM #, Desc., NAVD 88 Datum, and elevation.

BASIS OF BEARINGS

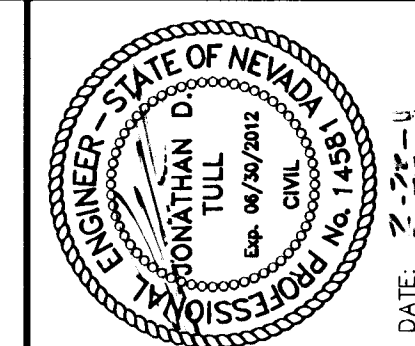
North 05° 59' 55" West being the bearing of the west line of section 34, T 20 S, R 59 E, M.D.M., City of Las Vegas, Clark County, Nevada.

LEGAL DESCRIPTION

Lot 7, 8, & Common Lot "G" of Block B of "Summerlin Village 23A Unit No. 2" on file in Book 121, Page 12 of Plats in the County Recorder's Office, Clark County, Nevada.

APPROVED FOR CONSTRUCTION signature and date: 3/2/11

APPROVED FOR CONSTRUCTION signature and date: 03/12/11



Revision table with columns for Date, Description, and Revision number.

PROJECT NO. 62023-980

G.C. WALLACE COMPANIES logo and address information.

THE HOWARD HUGHES COMPANY, LLC

SUMMERLIN VILLAGE 23A PARCEL L ANDALUSIA

UTILITY PLAN I

DRAWING C4 4 OF 31 SHEETS

FOR EXISTING IMPROVEMENTS SEE THE PASOS - VILLAGE 23A UNIT 2 IMPROVEMENTS BY G.C. WALLACE INC. JOB #62023.222, CLV #107-V3574-2

ENTRY WALLS AND GATES TO BE DESIGNED BY OTHERS

FOX HILL DRIVE (PUBLIC)

LOT A

COMMON

LOT A

NOTE ALL PRIVATE STREETS ARE P.U.E., PUBLIC SEWER EASEMENTS AND PUBLIC DRAINAGE EASEMENTS TO BE PRIVATELY MAINTAINED BY HOA.

REDUCED PRESSURE PRINCIPLE ASSEMBLY (3) - 1" APPROVED REDUCED PRESSURE PRINCIPLE ASSEMBLY(S) SHALL BE INSTALLED PER THE UDACS PLATE NO. 3.

Call before you Dig Underground 1-702-456-7511

Call before you Dig Overhead 1-702-227-2929

Call before you Dig 1-800-227-2600

WATER NOTE THIS PROPERTY MAY HAVE STATIC WATER PRESSURE IN EXCESS OF 80 PSI. THE UNIFORM PLUMBING CODE REQUIRES THAT INDIVIDUAL, ON-SITE (PRIVATE), PRESSURE REDUCING VALVES BE INSTALLED.

NOTES: 1. SEE SHEET 2 AND 3 FOR CONSTRUCTION NOTES 2. FOR SEWER & STORM DRAIN DESIGN SEE PLAN & PROFILES

SEWER AVERAGE DAILY FLOWS - 81 LOTS X 250 GPD/ERU = 20,250 (0.0203 MGPD)

WATER MAIN JOINT DEFLECTION (PVC 4'-24") PVC PIPE SHALL BE DEFLECTED AT THE JOINT ONLY. THE MAXIMUM ALLOWABLE DEFLECTION SHALL BE ONE (1) DEGREE PER JOINT.

CLV DRAWING NO. 107Y4975