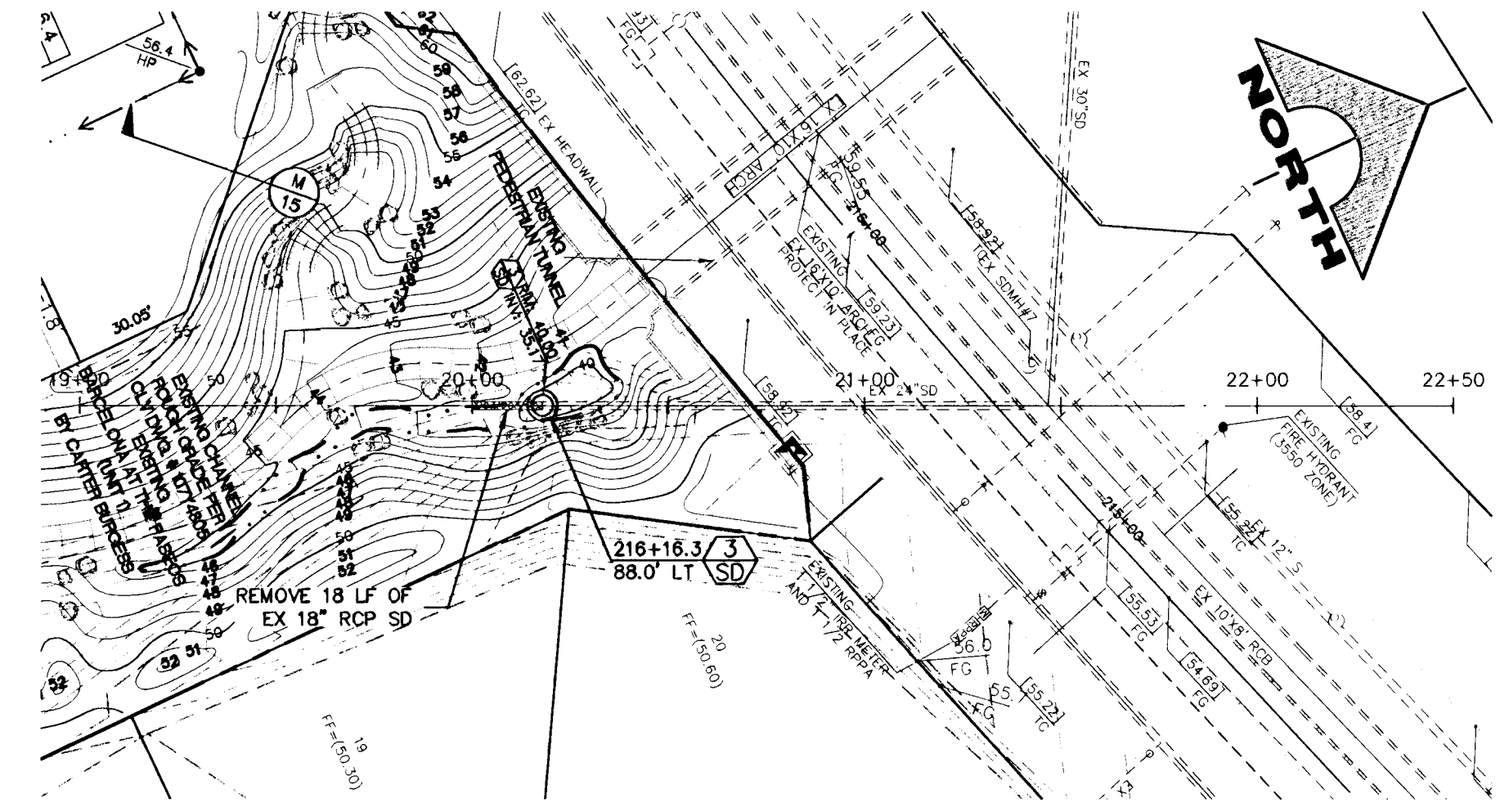
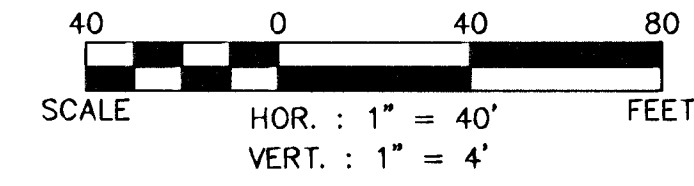
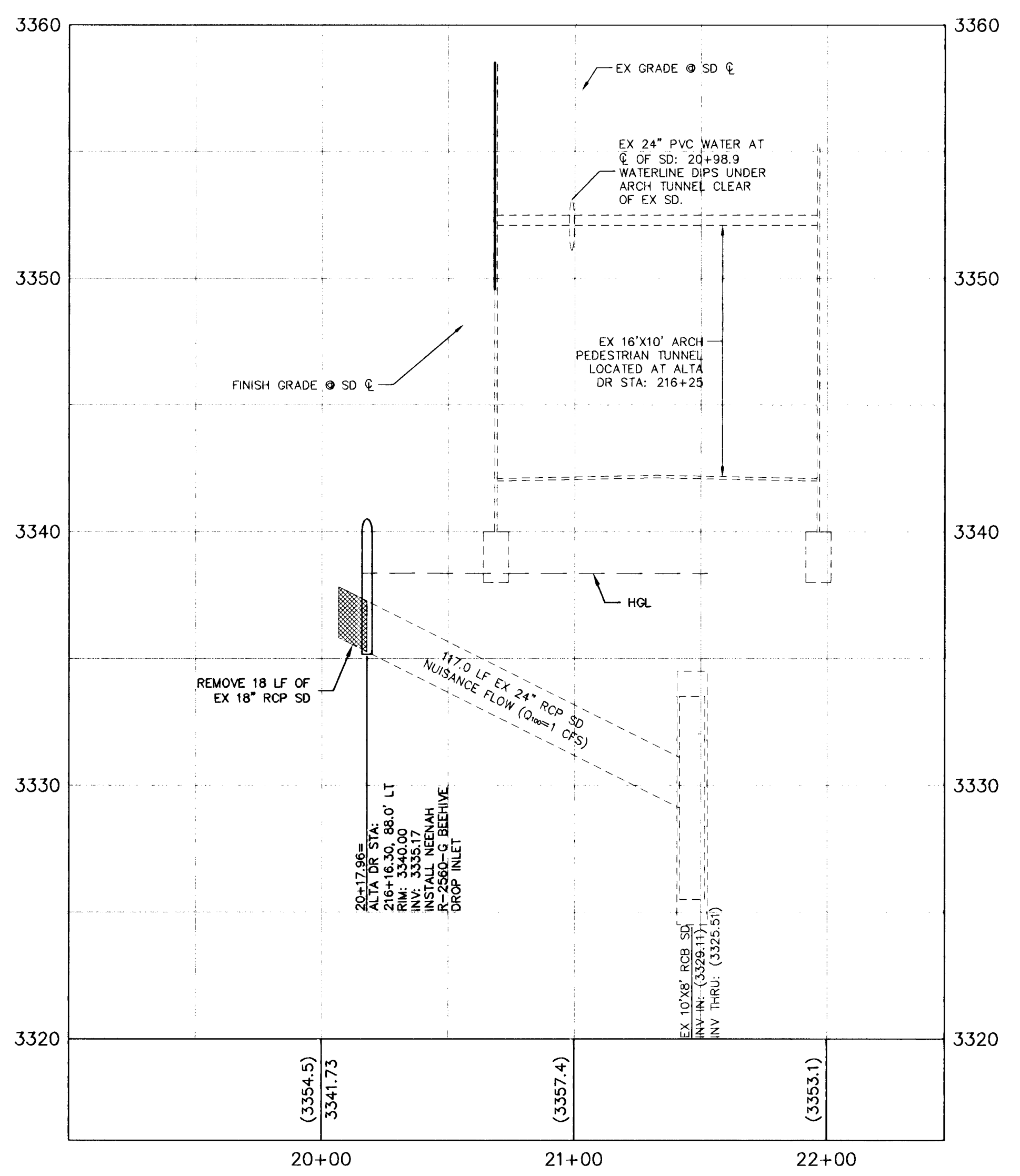
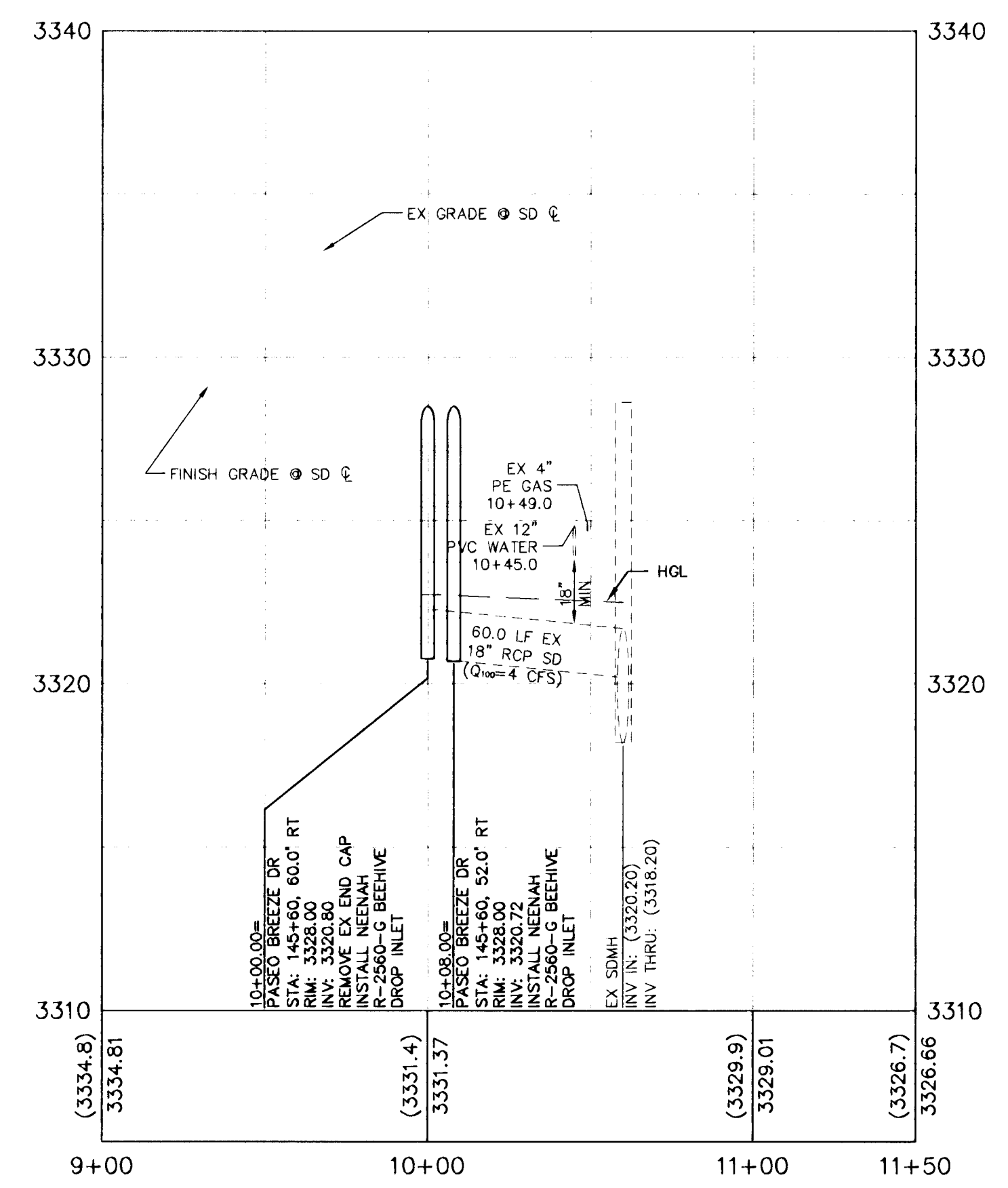
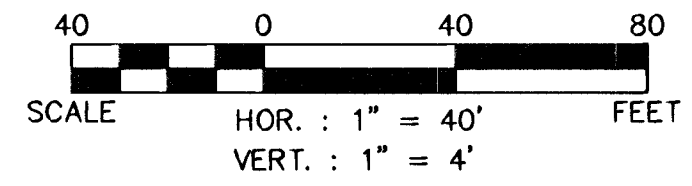


**PEDESTRIAN PASEO STORM DRAIN - SOUTH**



**PEDESTRIAN PASEO STORM DRAIN - NORTH**

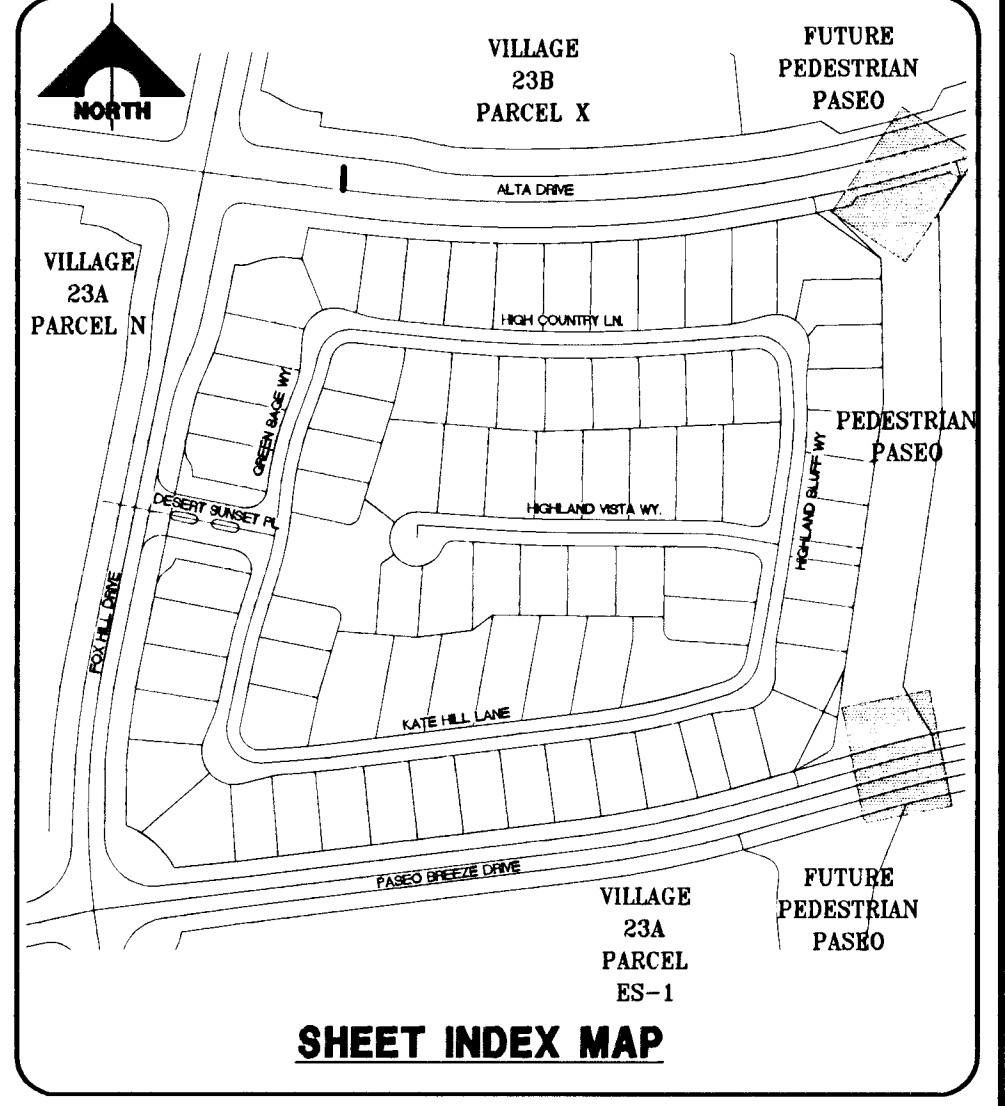


**NOTE:**  
ALL PRIVATE STREETS ARE P.U.E., PUBLIC SEWER EASEMENTS AND PUBLIC DRAINAGE EASEMENTS TO BE PRIVATELY MAINTAINED BY THE HOA.

Call before you Dig  
**1-702-465-7511**  
1-702-229-6811

Call before you Dig  
**1-702-227-2929**

Call before you Dig  
**1-800-227-2600**  
1-702-455-7544



**BENCHMARK**

BM #	DESC.	NAVD 88 DATUM	NAVD 88 DATUM
CLV BM No. D368 3	U.S.C. & G.S. BRASS DISC SET IN ROCK ON THE EAST SIDE OF CHARLESTON BOULEVARD AND SOUTH OF THE RED ROCK DETENTION BASIN.	3246.71 (FEET)	989.599 (METERS)

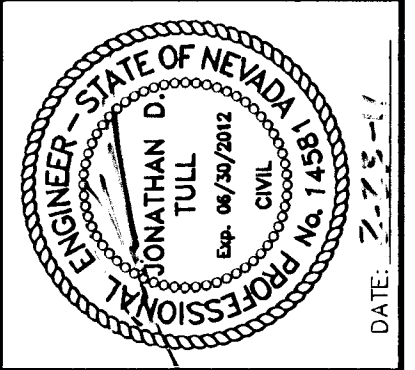
**BASIS OF BEARINGS**  
NORTH 05° 59' 55" WEST BEING THE BEARING OF THE WEST LINE OF SECTION 34, T 20 S, R 59 E, M.D.M., CITY OF LAS VEGAS, CLARK COUNTY, NEVADA, AS SHOWN BY MAP THEREOF ON FILE IN FILE 91, PAGE 28 OF PARCEL MAPS IN THE CLARK COUNTY RECORDERS OFFICE, CLARK COUNTY, NEVADA.

**LEGAL DESCRIPTION**  
LOT 7, 8, & COMMON LOT "C" OF BLOCK B OF "SUMMERLIN VILLAGE 23A UNIT NO. 2" ON FILE IN BOOK 121, PAGE 12 OF PLATS IN THE COUNTY RECORDER'S OFFICE, CLARK COUNTY, NEVADA LYING WITHIN SECTION 34, TOWNSHIP 20 SOUTH, RANGE 59 EAST, M.D.M., CITY OF LAS VEGAS, CLARK COUNTY, NEVADA.

**CONSTRUCTION NOTES**

**STORM DRAIN**

- REMOVE EXISTING END CAP AND INSTALL NEENAH R-2560-G BEEHIVE DROP INLET ONTO EXISTING STORM DRAIN
- INSTALL NEENAH R-2560-G BEEHIVE DROP INLET



PROJECT NO.	DATE	DESCRIPTION
62023-980		

**G.C. WALLACE COMPANIES**  
ENGINEERS | PLANNERS | SURVEYORS  
1500 W. WASHINGTON BLVD., SUITE 200, LAS VEGAS, NV 89102  
TEL: 702.894.8000 FAX: 702.894.4299 GCWALLACE.COM

**LAS VEGAS - SACRAMENTO - RENO**  
Daniel Kelley

**THE HOWARD HUGHES COMPANY, LLC**  
SUMMERLIN VILLAGE 23A PARCEL L ANDALUSIA

**STORM DRAIN II**  
PLAN AND PROFILE

CLV DRAWING NO. 107Y4975

23 OF 31 SHTS

126789