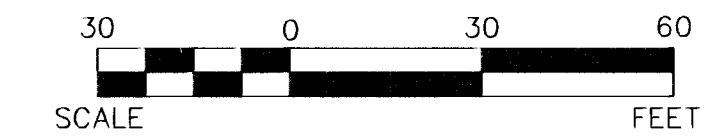


MATCHLINE SEE BELOW LEFT

Call before you Dig
 1-702-455-7511
 1-702-229-6611



Call before you Dig
 811
 1-800-227-2600
 1-702-455-7544

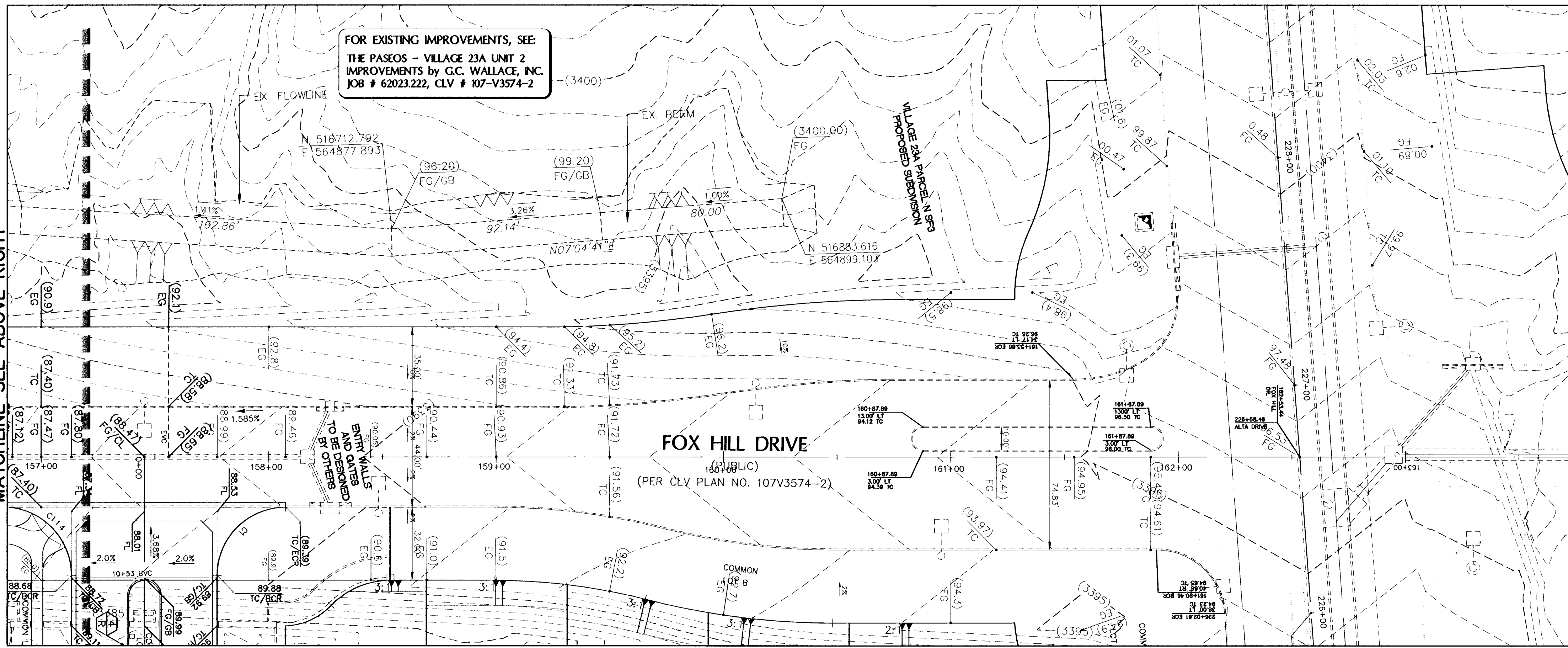
CALL BEFORE YOU DO OVERHEAD
 1-702-227-2929

LEGAL DESCRIPTION
 LOT 7, 8, & COMMON LOT "G" OF BLOCK B OF "SUMMERLIN VILLAGE 23A UNIT NO. 2" ON FILE IN BOOK 121, PAGE 12 OF PLATS IN THE COUNTY RECORDER'S OFFICE, CLARK COUNTY, NEVADA LYING WITHIN SECTION 34, TOWNSHIP 20 SOUTH, RANGE 59 EAST, M.D.M., CITY OF LAS VEGAS, CLARK COUNTY, NEVADA.

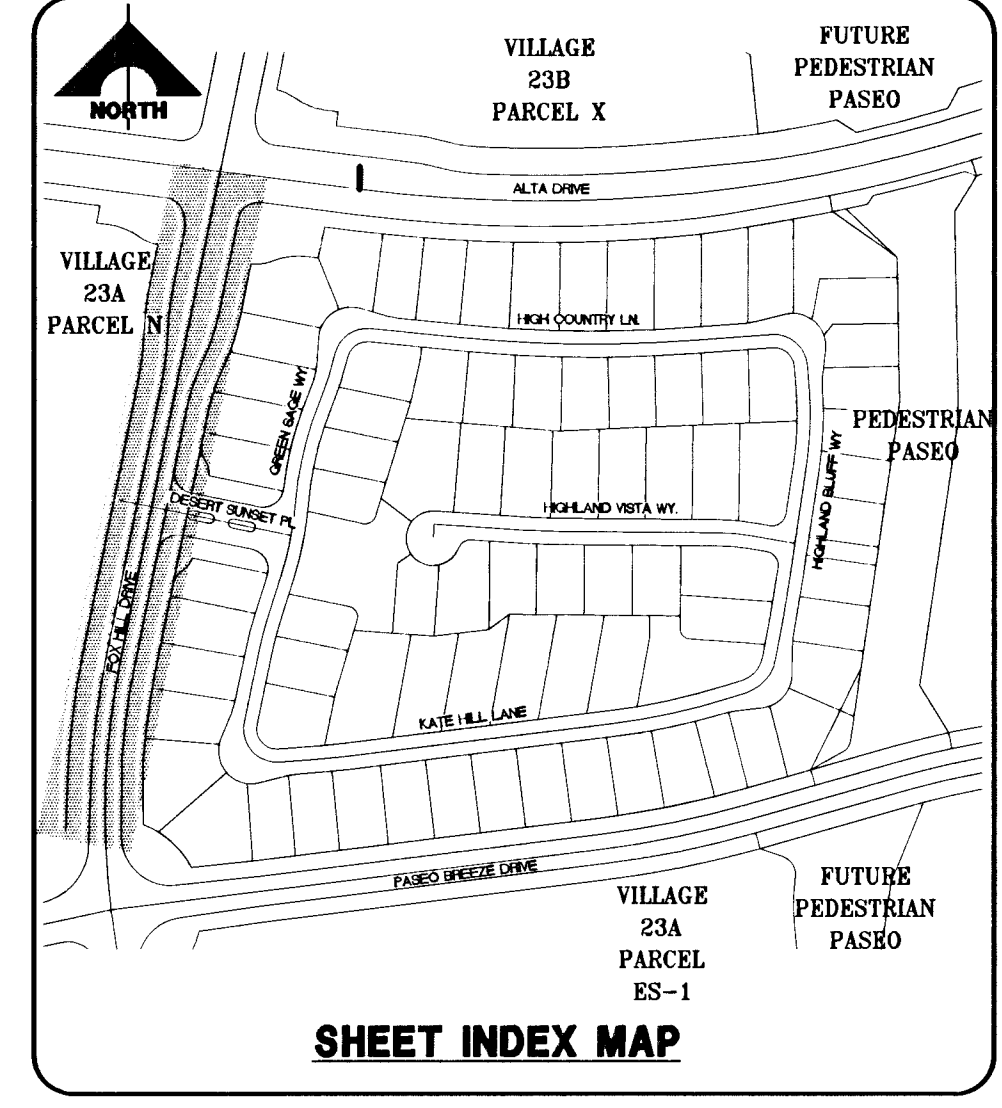
BASIS OF BEARINGS
 NORTH 05° 59' 55" WEST BEING THE BEARING OF THE WEST LINE OF SECTION 34, T 20 S, R 59 E, M.D.M., CITY OF LAS VEGAS, CLARK COUNTY, NEVADA, AS SHOWN BY MAP THEREOF ON FILE IN FILE 91, PAGE 28 OF PARCEL MAPS IN THE CLARK COUNTY RECORDERS OFFICE, CLARK COUNTY, NEVADA.

BENCHMARK

BM #	DESC.	NAVD 88 DATUM	NAVD 89 DATUM
CLV BM No. D368 3	U.S.C. & G.S. BRASS DISC SET IN ROCK ON THE EAST SIDE OF CHARLESTON BOULEVARD AND SOUTH OF THE RED ROCK DETENTION BASIN.	3246.71 (FEET)	989.599 (METERS)

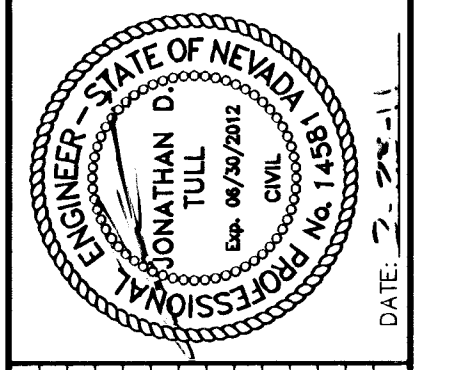


MATCHLINE SEE ABOVE RIGHT



NOTE
 ALL PRIVATE STREETS ARE P.U.E., PUBLIC SEWER EASEMENTS AND PUBLIC DRAINAGE EASEMENTS TO BE PRIVATELY MAINTAINED BY HOA.

DRAINAGE CERTIFICATION
 I CERTIFY THAT THIS GRADING PLAN IS IN CONFORMANCE WITH THE APPROVED DRAINAGE STUDY DS3712G.
 JONATHAN D. TULL, PE NO. 14581
 DATE: 2-23-11
 CLV DRAWING NO. 107Y4975



DATE	GCW APP	DATE	LAGEN APP	DATE	REV	DESCRIPTION

PROJECT NO. 62023-980
DESIGNER: G.C. WALLACE COMPANIES ENGINEERS | PLANNERS | SURVEYORS
 1555 S. RAINBOW BOULEVARD - LAS VEGAS, NV 89146
 T: 702.884.2000 - F: 702.884.2599 - GCWALLACE.COM
DRAWN: LAS VEGAS - SACRAMENTO, RENO
 F:\Projects\600\62023-980\DWG\Production\ANDAC012-grading5.dwg
 Daniel Kelley

THE HOWARD HUGHES COMPANY, LLC
 SUMMERLIN VILLAGE 23A PARCEL L
 ANDALLUSA
GRADING PLAN V
 H: 40301
 DRAWING **C12**
 12 OF 31 SHTS