

11/19/16

DATE

DATE

DATE

DATE

DATE

DATE

DATE

DATE

DATE

DATE

DATE

DATE

DATE

DATE

DATE

DATE

DATE

DATE

DATE

DATE

DATE

DATE

DATE

DATE

DATE

DATE

DATE

DATE

DATE

DATE

DATE

DATE

DATE

DATE

DATE

DATE

DATE

DATE

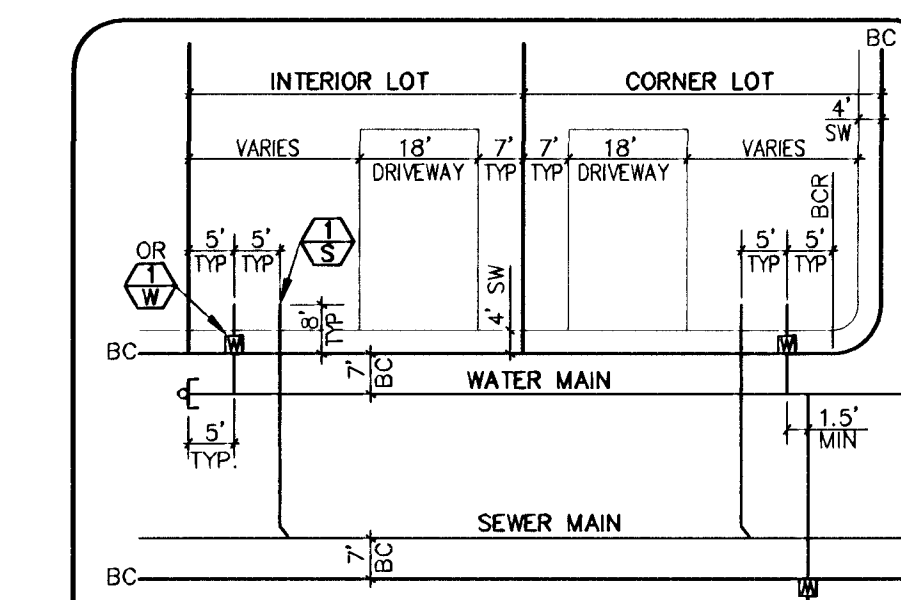
DATE

DATE

CONSTRUCTION NOTES

- WATER
INSTALL 3/4" WATER METER
INSTALL 8"x8" TEE
INSTALL 8"x8"x6" TEE
INSTALL 8"x8" REDUCER
NOT USED
INSTALL 8" 11-1/4" BEND
INSTALL 8" 22-1/2" BEND
INSTALL 8" 45" BEND
INSTALL 8" 90" BEND
INSTALL CAP W/ 2" BLOW-OFF ASSEMBLY
INSTALL FIRE HYDRANT ASSEMBLY
INSTALL 8" GATE VALVE & BOX
REMOVE CAP AND BLOW OFF & CONNECT TO EX WATER LINE
INSTALL 5/8" IRRIGATION METER AND 1" RPPA
ADJUST TO GRADE

WATER NOTE
THIS PROPERTY MAY HAVE STATIC WATER PRESSURE IN EXCESS OF 80 PSI. THE UNIFORM PLUMBING CODE REQUIRES THAT INDIVIDUAL ON-SITE (PRIVATE) PRESSURE REDUCING VALVES BE INSTALLED WHENEVER THE PRESSURE EXCEEDS 80 PSI.



TYPICAL LATERAL LOCATION DETAIL UNLESS OTHERWISE SHOWN ON PLAN NOT TO SCALE

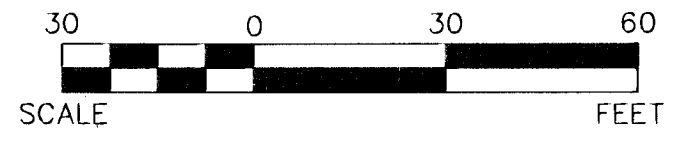
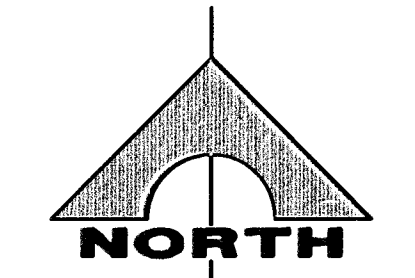
BENCHMARK
CITY OF LAS VEGAS BENCHMARK 0LV09 36N11W6 RIVET & PLATE IN TOP OF CURB RETURN @ NW CORNER OF PAVILLION CENTER & ALTA. 3024.16 FEET OR 921.767 METERS NAVD 1988 DATUM

BASIS OF BEARINGS
NORTH 05° 59' 55" WEST BEING THE BEARING OF THE WEST LINE OF SECTION 34, T 20 S, R 59 E, M.D.M., CITY OF LAS VEGAS, CLARK COUNTY, NEVADA, AS SHOWN BY MAP THEREON ON FILE IN FILE 91, PAGE 28 OF PARCEL MAPS IN THE CLARK COUNTY RECORDER'S OFFICE, CLARK COUNTY, NEVADA.

LEGAL DESCRIPTION
BEING A SUBDIVISION OF A PORTION OF PARCEL 1 AS SHOWN BY MAP THEREON ON FILE IN FILE 91, PAGE 28 OF PARCEL MAPS IN THE COUNTY RECORDER'S OFFICE, CLARK COUNTY, NEVADA, LYING WITHIN SECTION 34, TOWNSHIP 20 SOUTH, RANGE 59 EAST, AND THE NORTH HALF (N 1/2) OF THE NORTH HALF (N 1/2) OF SECTION 3, TOWNSHIP 21 SOUTH, RANGE 59 EAST, M.D.M., CITY OF LAS VEGAS, CLARK COUNTY, NEVADA.

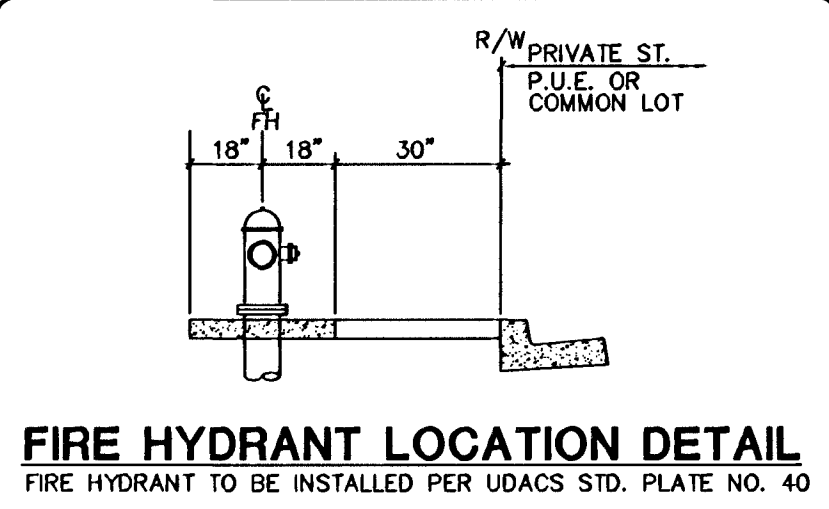
APPROVED FOR CONSTRUCTION
CITY OF LAS VEGAS FIRE DEPARTMENT
DATE 11/30/16

APPROVED FOR CONSTRUCTION
LAS VEGAS VALLEY WATER DISTRICT ENGINEERING SERVICES MANAGER
PROJECT NO. 116538 DATE: 11/30/16

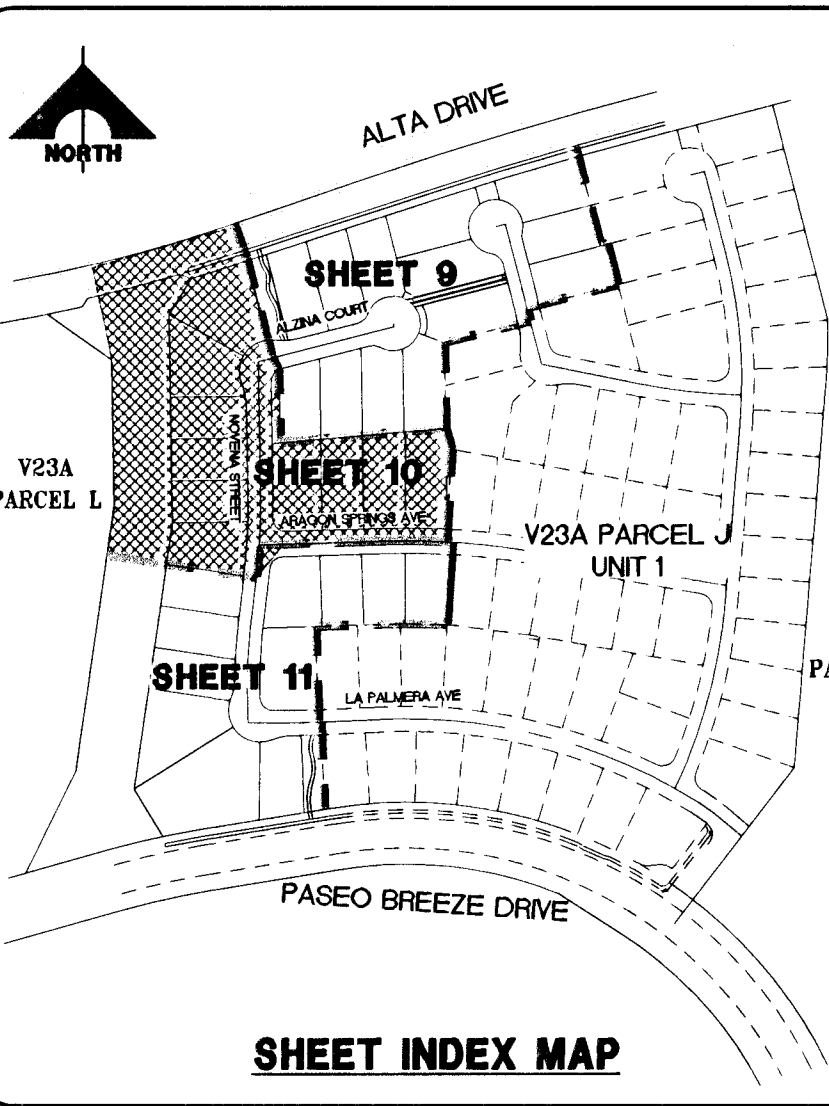


UTILITY LEGEND

- EX 8" W --- EXISTING WATER LINE W/SIZE
8" PVC W --- PROPOSED WATER LINE W/SIZE
1" PROPOSED WATER LATERAL & 3/4" METER PER UDACS PLATE 4 OR 5/8" METER PER UDACS PLATE 2 AS NOTED
PROPOSED FIRE HYDRANT W/6" LATERAL & 6" G.V.
EX 8" SS --- EXISTING SEWER LINE W/SIZE
8" PVC SS --- PROPOSED SEWER LINE W/SIZE
PROPOSED SEWER LATERAL
PROPOSED SEWER MANHOLE
GATE VALVE
8" W x 6" WL --- WATER REDUCER
PROPOSED BLOW-OFF
CONCRETE DRIVEWAY
BWV --- REQUIRES BACKWATER VALVE
PRV --- REQUIRES PRESSURE REDUCER VALVE
EXISTING SEWER MANHOLE



FIRE HYDRANT LOCATION DETAIL FIRE HYDRANT TO BE INSTALLED PER UDACS STD. PLATE NO. 40

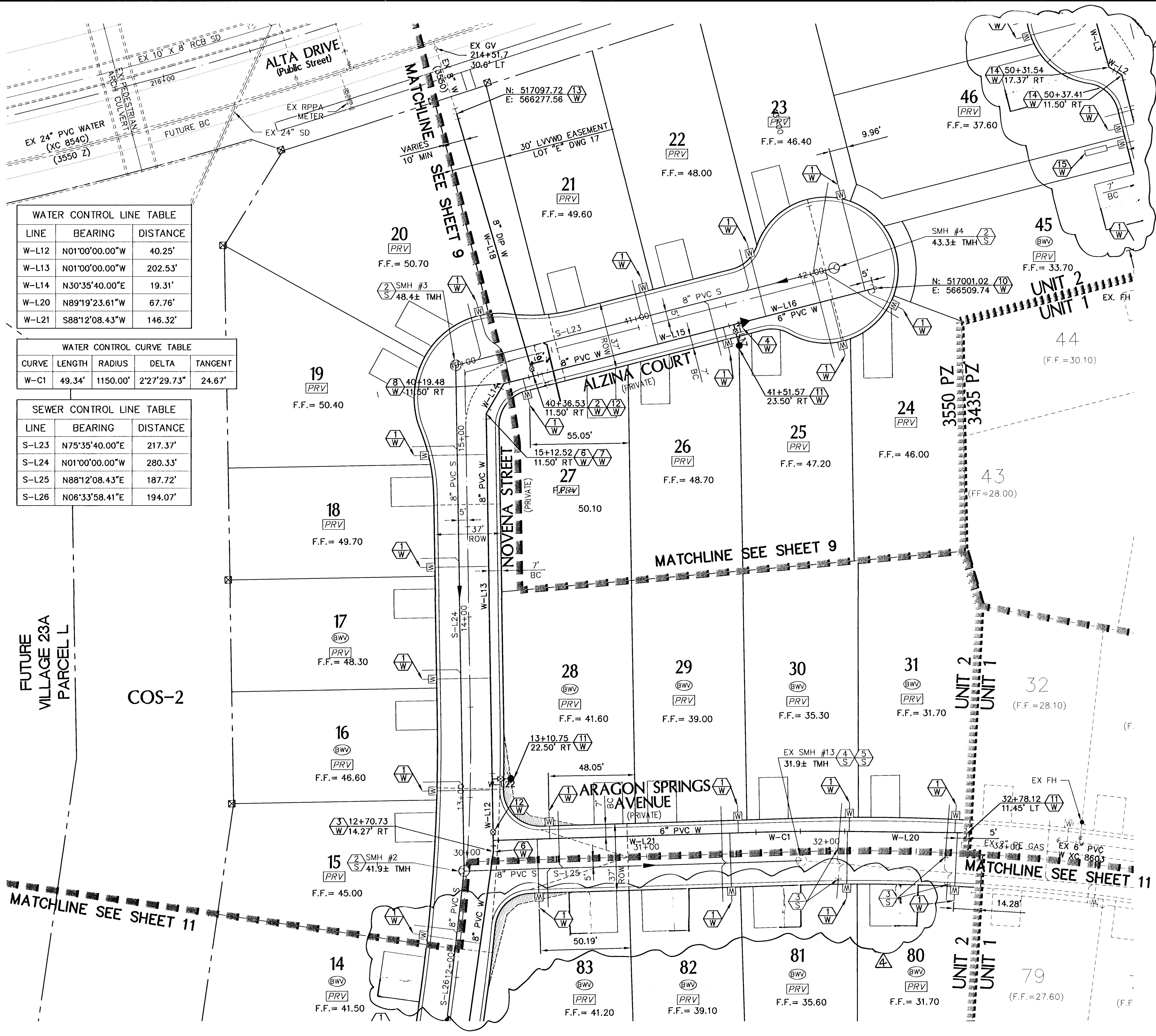


SHEET INDEX MAP

WATER CONTROL LINE TABLE with columns for LINE, BEARING, and DISTANCE.

WATER CONTROL CURVE TABLE with columns for CURVE, LENGTH, RADIUS, DELTA, and TANGENT.

SEWER CONTROL LINE TABLE with columns for LINE, BEARING, and DISTANCE.



NOTE
ALL PRIVATE STREETS ARE P.U.E., PUBLIC SEWER EASEMENTS AND PUBLIC DRAINAGE EASEMENTS TO BE PRIVATELY MAINTAINED BY HOA.

* REDUCED PRESSURE PRINCIPLE ASSEMBLY (RPPA) (2) - 1"
APPROVED REDUCED PRESSURE PRINCIPLE ASSEMBLY(S) SHALL BE INSTALLED PER THE UDACS PLATE NO. 8. NO WATER SHALL BE TAKEN FROM A SERVICE REQUIRING BACKFLOW PREVENTION UNTIL THE REDUCED PRESSURE PRINCIPLE ASSEMBLY HAS BEEN SUCCESSFULLY TESTED BY THE LVWMD.

Call before you Dig logo with phone numbers 1-702-456-7611 and 1-702-229-6911.

Call before you Dig logo with phone number 1-702-227-2929.

Call before you Dig logo with phone number 1-800-227-2600 and 1-702-455-7544.

WATER MAIN JOINT DEFLECTION (PVC 4"-24")
PVC PIPE SHALL BE DEFLECTED AT THE JOINT ONLY. THE MAXIMUM ALLOWABLE DEFLECTION SHALL BE ONE (1) DEGREE PER JOINT WITH A MINIMUM ALLOWABLE RADIUS OF CURVATURE OF 1,150 FEET, PER UDACS 2.07.01 AND 2.07.02.

- NOTES:
1. SEE SHEET 2 AND 3 FOR CONSTRUCTION NOTES
2. FOR SEWER & STORM DRAIN DESIGN SEE PLAN & PROFILES
3. FOR STREETLIGHTS SEE STREETLIGHT AND TRAFFIC CONTROL PLAN (SHEETS 23-28)
4. INSTALL PIPELINE MARKER BALLS IN TRENCH ABOVE EACH HORIZONTAL ELBOW FITTING, PER UDACS PLATE No. 27.

SEWER AVERAGE DAILY FLOWS = 34 LOTS X 250 GPD/ERU = 8,500 (0.0085 MGD)
SEWER PEAK FLOWS = 0.0300 MGD

FIRE FLOW CALCULATIONS
FIRE FLOW REQUIREMENT IS 1500 GALLONS PER MINUTE AT 20 PSI.
SQUARE FOOTAGE: LESS THAN 3,600 SQ. FT.
LARGEST AREA BETWEEN 4-HOUR AREA SEPARATION WALLS: N/A
BUILDING HEIGHT: 20 FT. MAX
NUMBER OF STORIES: 2
TYPE OF CONSTRUCTION: V-NR
OCCUPANCY: RESIDENTIAL
FULL AUTOMATIC FIRE SPRINKLER SYSTEM: NO

PROJECT NO. 62023-970

G. C. WALLACE COMPANIES ENGINEERS | PLANNERS | SURVEYORS
1555 S. RAINBOW BOULEVARD, LAS VEGAS, NV 89146
T: 702.804.2000 F: 702.804.2999 GCWALLACE.COM

THE HOWARD HUGHES CORPORATION
SUMMERLIN VILLAGE 23A PARCEL J UNIT 2
BARCELONA

UTILITY PLAN 2
DRAWING NO. 10
11/30/16

10 OF 23 SHEETS