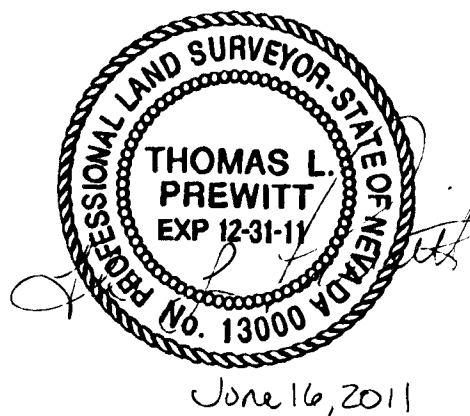


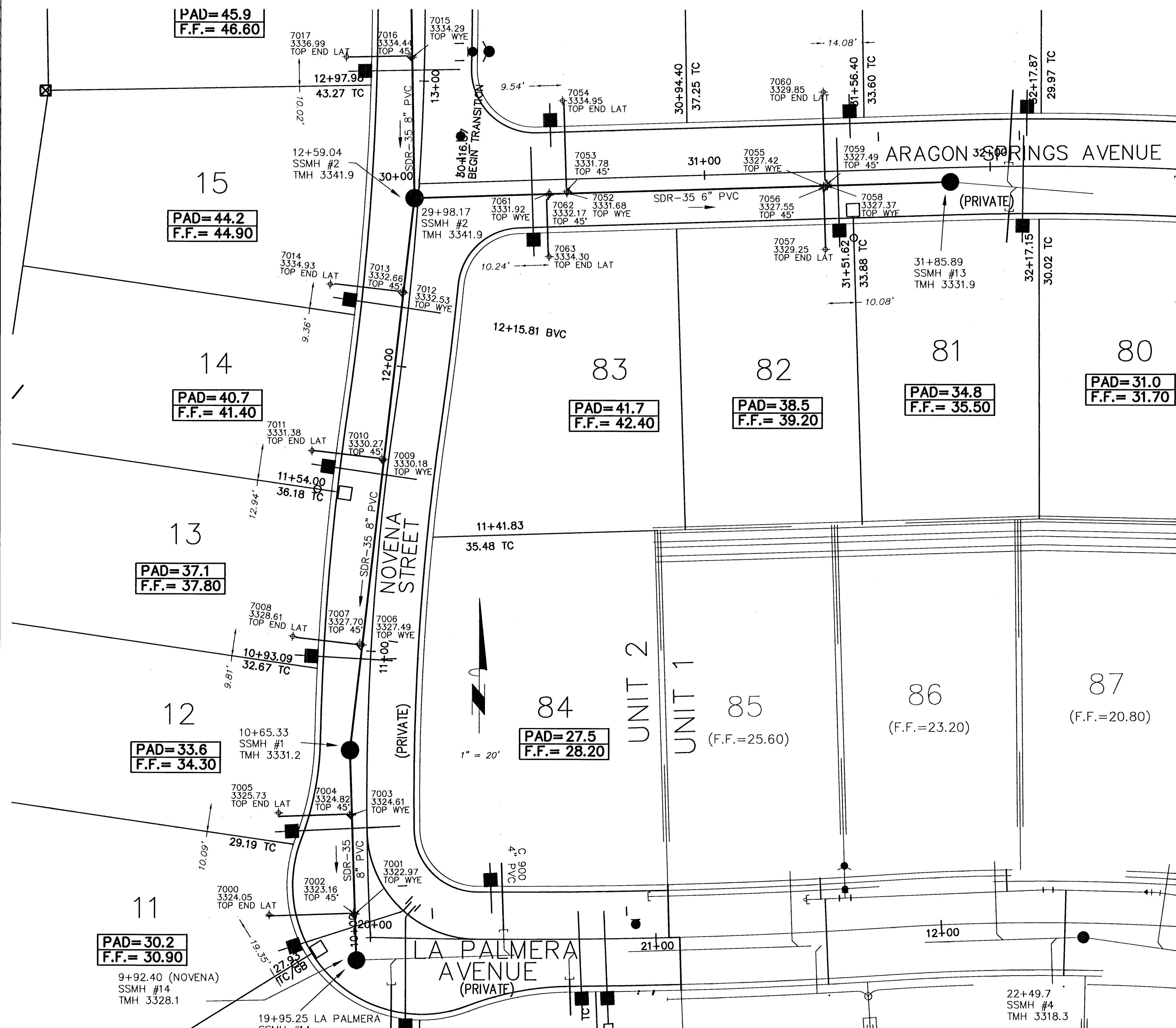
SUMMERLIN VILLAGE 23 A, PARCEL J - UNIT 2 "BARCELONA" SANITARY SEWER AS BUILTS

POINT NO.	NORTHING	EASTING	ELEV.	DESCRIPTION
7000	26,762,970.11	722,010.34	3324.05	T.O.P. END LAT
7001	26,762,970.46	722,040.42	3322.97	T.O.P. WYE
7002	26,762,970.76	722,039.85	3323.16	T.O.P. 45°
7003	26,763,005.02	722,039.03	3324.62	T.O.P. WYE
7004	26,763,005.31	722,038.41	3324.82	T.O.P. 45°
7005	26,763,005.69	722,013.50	3325.73	T.O.P. END LAT
7006	26,763,064.33	722,042.57	3327.49	T.O.P. WYE
7007	26,763,064.91	722,041.81	3327.70	T.O.P. 45°
7008	26,763,067.35	722,018.32	3328.61	T.O.P. END LAT
7009	26,763,129.09	722,050.14	3330.18	T.O.P. WYE
7010	26,763,129.54	722,049.41	3330.27	T.O.P. 45°
7011	26,763,132.19	722,024.92	3331.38	T.O.P. END LAT
7012	26,763,187.48	722,057.07	3332.53	T.O.P. WYE
7013	26,763,187.97	722,056.46	3332.66	T.O.P. 45°
7014	26,763,190.29	722,031.23	3334.93	T.O.P. END LAT
7015	26,763,269.52	722,059.84	3334.29	T.O.P. WYE
7016	26,763,269.95	722,059.04	3334.44	T.O.P. 45°
7017	26,763,269.65	722,036.73	3336.99	T.O.P. END LAT
7018	26,763,331.48	722,059.11	3334.66	T.O.P. WYE
7019	26,763,331.78	722,058.43	3334.83	T.O.P. 45°
7020	26,763,331.57	722,036.19	3339.69	T.O.P. END LAT
7021	26,763,394.24	722,058.03	3334.91	T.O.P. WYE
7022	26,763,394.45	722,057.34	3335.12	T.O.P. 45°
7023	26,763,393.58	722,035.22	3340.64	T.O.P. END LAT
7024	26,763,456.35	722,056.85	3335.28	T.O.P. WYE
7025	26,763,456.57	722,056.31	3335.68	T.O.P. 45°
7026	26,763,455.38	722,030.88	3341.61	T.O.P. END LAT
7027	26,763,498.55	722,055.88	3334.90	MH INV OUT
7028	26,763,500.74	722,057.68	3335.01	MH INV IN
7029	26,763,504.06	722,070.50	3335.67	T.O.P. WYE
7030	26,763,504.89	722,070.69	3335.84	T.O.P. 45°
7031	26,763,536.45	722,062.22	3342.83	T.O.P. END LAT
7032	26,763,526.67	722,158.54	3336.13	T.O.P. WYE
7033	26,763,527.50	722,158.87	3336.22	T.O.P. 45°
7034	26,763,548.40	722,153.63	3340.45	T.O.P. END LAT
7035	26,763,542.02	722,218.18	3336.56	T.O.P. WYE
7036	26,763,542.84	722,218.34	3336.70	T.O.P. 45°
7037	26,763,565.98	722,212.99	3339.32	T.O.P. END LAT
7038	26,763,551.52	722,253.21	3336.84	T.O.P. WYE
7039	26,763,552.20	722,253.34	3336.96	T.O.P. 45°
7040	26,763,553.51	722,261.66	3336.86	T.O.P. WYE
7041	26,763,552.92	722,262.05	3336.97	T.O.P. 45°
7042	26,763,554.10	722,264.53	3336.25	MH INV OUT
7043	26,763,551.89	722,254.60	3336.87	T.O.P. WYE
7044	26,763,551.28	722,255.05	3337.11	T.O.P. 45°
7045	26,763,505.42	722,266.40	3337.70	T.O.P. END LAT
7046	26,763,536.47	722,196.17	3336.46	T.O.P. WYE
7047	26,763,535.97	722,196.51	3336.61	T.O.P. 45°
7048	26,763,504.85	722,204.07	3339.90	T.O.P. END LAT
7049	26,763,513.26	722,105.50	3335.84	T.O.P. WYE
7050	26,763,512.76	722,105.98	3336.07	T.O.P. 45°
7051	26,763,481.61	722,114.22	3342.11	T.O.P. END LAT
7052	26,763,222.25	722,114.04	3331.68	T.O.P. WYE
7053	26,763,222.89	722,113.85	3331.78	T.O.P. 45°
7054	26,763,254.44	722,112.41	3334.95	T.O.P. END LAT
7055	26,763,224.83	722,204.02	3327.42	T.O.P. WYE
7056	26,763,224.17	722,203.81	3327.55	T.O.P. 45°
7057	26,763,202.69	722,204.60	3329.25	T.O.P. END LAT
7058	26,763,224.85	722,205.27	3327.37	T.O.P. WYE
7059	26,763,225.52	722,205.14	3327.49	T.O.P. 45°
7060	26,763,257.58	722,203.78	3329.85	T.O.P. END LAT
7061	26,763,222.16	722,107.83	3331.92	T.O.P. WYE
7062	26,763,221.42	722,107.67	3332.17	T.O.P. 45°
7063	26,763,200.00	722,107.79	3334.31	T.O.P. END LAT
7064	26,763,526.56	722,302.21	3337.61	T.O.P. END LAT
7065	26,763,602.18	722,262.60	3338.52	T.O.P. END LAT

NOTE:
AS BUILT CO-ORDINATES ARE IN NEVADA EAST ZONE 2701
STATE PLANE CO-ORDINATE SYSTEM. ALL ELEVATIONS
WERE SHOT WITH G.P.S. AND ARE ± 0.10'.



PLS PREWITT LAND SURVEYING
PROFESSIONAL LAND SURVEYING SERVICES
5892 TAYLOR VALLEY AVE., LAS VEGAS, NV 89131
(702) 649-8790 FAX: (702) 399-9881



NO.	STREET NAME	CL STA.	CL OFFSET	TMH	INV. IN	INV. OUT	INV. OUT
EX SSMH #14	LA PALMERA	19+95.25	8.11' RT	3328.1+	3321.45	3321.25	
EX SSMH #14	NOVENA ST	9+92.4	5.45' LT	3328.1+	3321.45	3321.25	
SMH #1	NOVENA ST	10+65.33	6.08' RT	3331.2+	3325.21	3325.01	
SMH #2	NOVENA ST	12+59.04	1.34' LT	3341.9+	3333.30 (N)	3333.50 (E)	3333.10 (S)
EX SSMH #13	ARAGON SPR	31+85.89	5.0' RT	3331.9+	3324.66	3324.46	

NOTE:
SEWER LATERALS TYPICALLY SDR-35 4" PVC, EXCEPT AT
LOTS 24 AND 84 AS SHOWN ON DRAWING.

SHEET TITLE: SANITARY SEWER AS BUILT
PROJECT TITLE:
SUMMERLIN "BARCELONA"
RICE CONSTRUCTION
A.P.N. 137-34-601-003