

| ROAD CONTROL LINE TABLE |                 |          |
|-------------------------|-----------------|----------|
| LINE                    | BEARING         | DISTANCE |
| L5                      | N14°24'20.00\"W | 5.00'    |
| L6                      | N75°35'40.00\"E | 208.42'  |
| L7                      | N75°35'40.00\"E | 90.41'   |
| L8                      | N75°35'40.00\"E | 136.17'  |
| L9                      | S1°00'00.00\"E  | 190.93'  |
| L10                     | S1°00'00.00\"E  | 160.53'  |
| L11                     | S1°00'00.00\"E  | 123.03'  |

| ROAD CONTROL CURVE TABLE |             |         |         |         |
|--------------------------|-------------|---------|---------|---------|
| CURVE                    | DELTA       | RADIUS  | LENGTH  | TANGENT |
| C4                       | 280°51'11\" | 40.50'  | 198.52' | 33.47'  |
| C5                       | 44°13'12\"  | 19.50'  | 15.05'  | 7.92'   |
| C6                       | 56°37'59\"  | 19.50'  | 19.27'  | 10.51'  |
| C7                       | 21°15'20\"  | 100.00' | 37.10'  | 18.76'  |
| C8                       | 119°06'20\" | 47.00'  | 97.70'  | 79.96'  |
| C9                       | 76°35'40\"  | 20.00'  | 26.74'  | 15.79'  |

| SEWER CONTROL LINE TABLE |                 |          |
|--------------------------|-----------------|----------|
| LINE                     | BEARING         | DISTANCE |
| S-L23                    | N75°35'40.00\"E | 217.37'  |
| S-L24                    | N01°00'00.00\"W | 280.33'  |
| S-L25                    | N88°12'08.43\"E | 187.72'  |
| S-L26                    | N06°33'58.41\"E | 194.07'  |
| S-L27                    | N01°54'02.63\"W | 73.38'   |

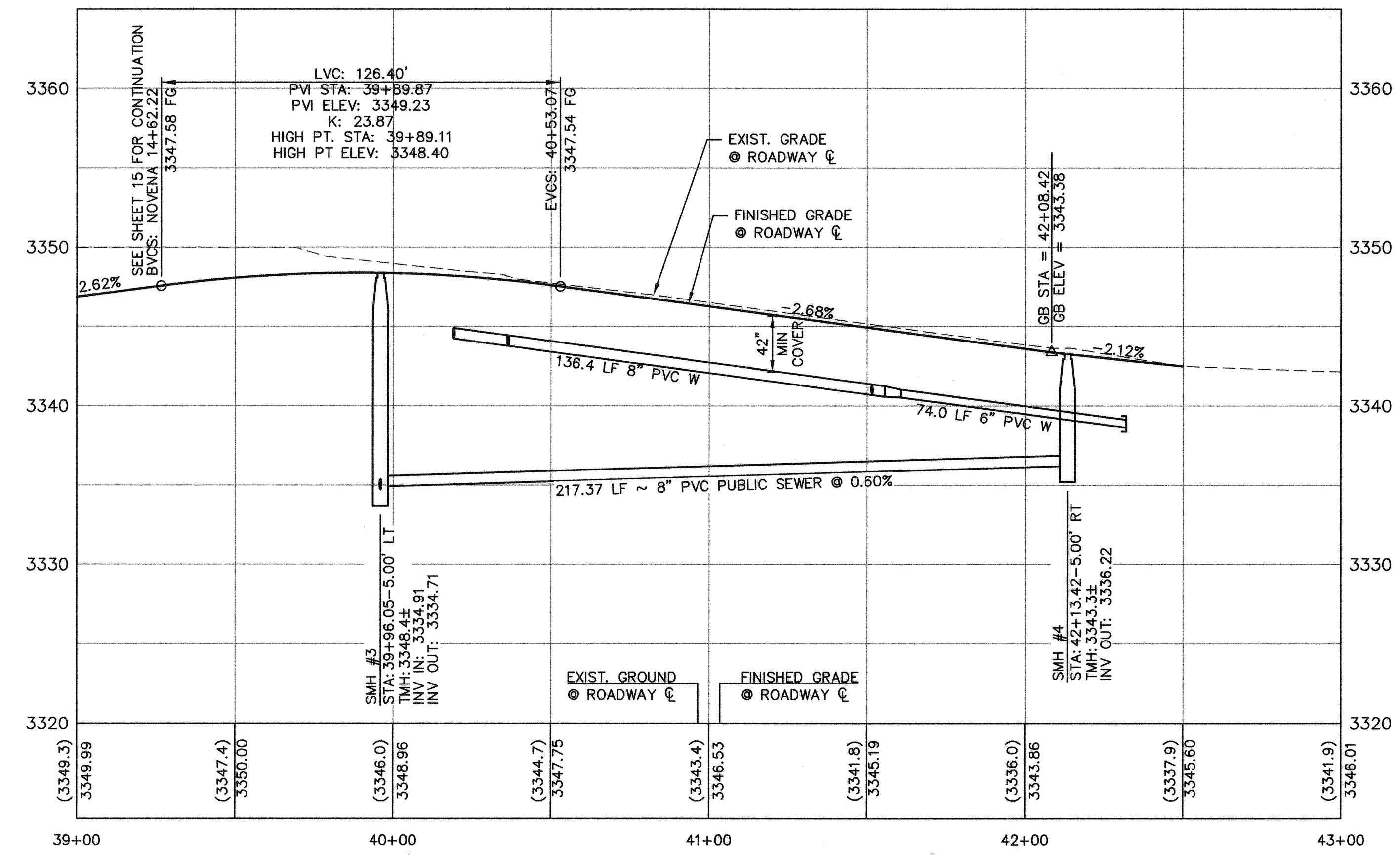
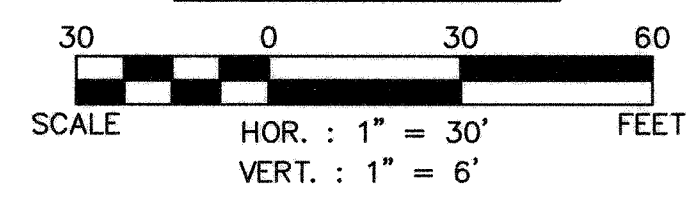
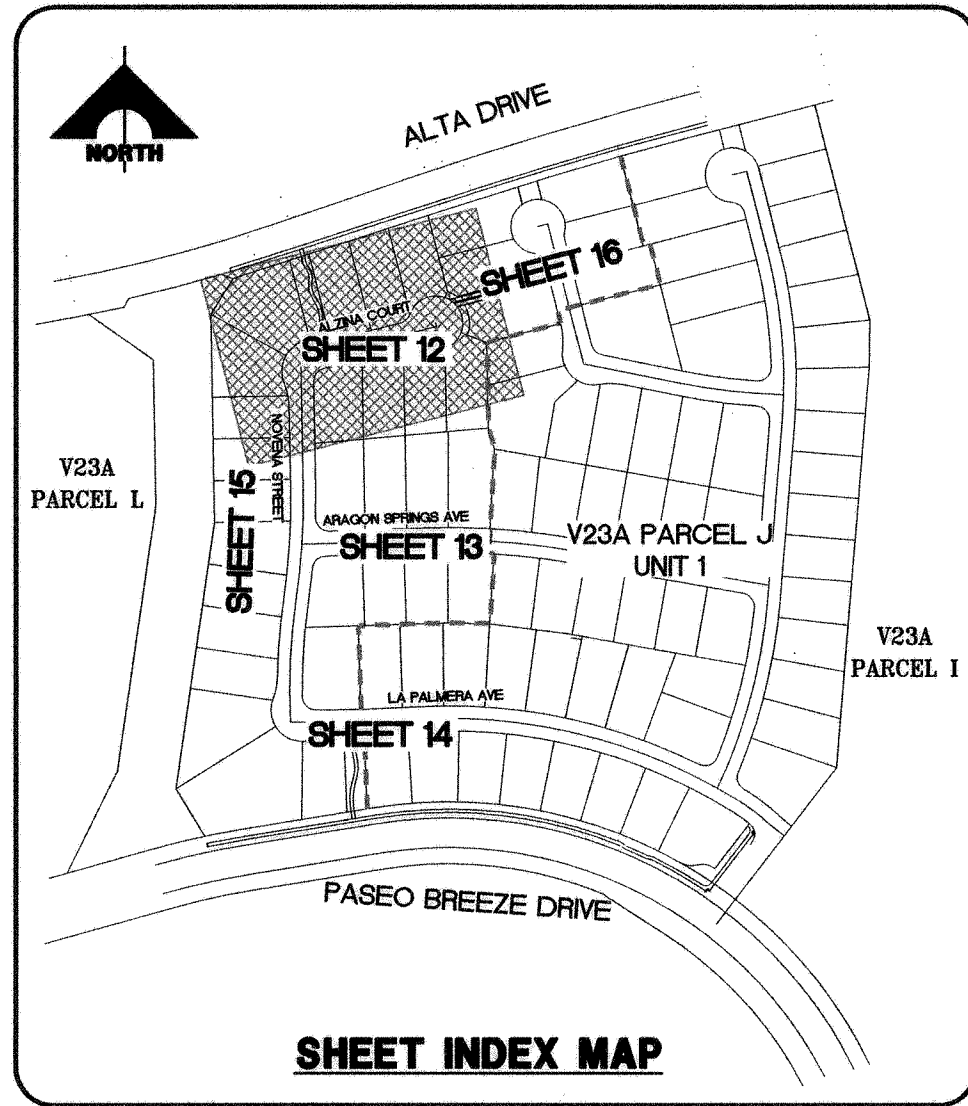
**CONSTRUCTION NOTES**

**ROADWAY**

- INSTALL 2\" AC PAVEMENT
- INSTALL \"L\" TYPE CURB & GUTTER

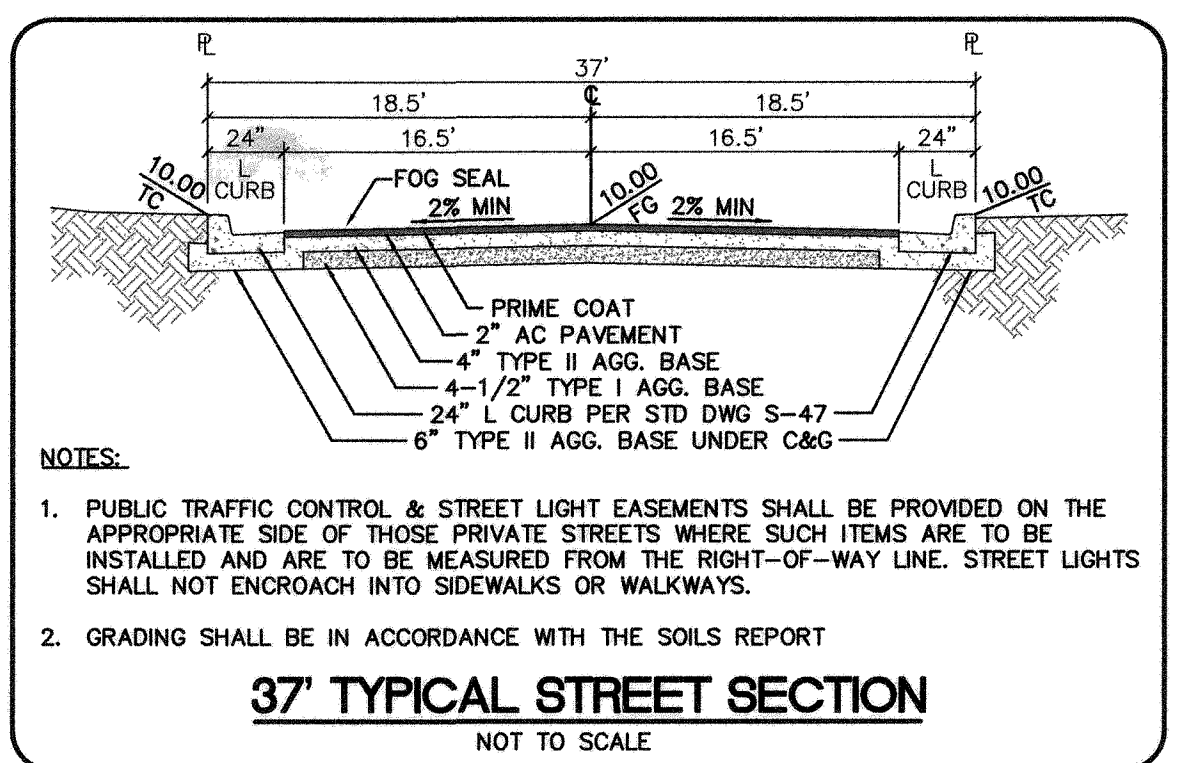
**SEWER**

- INSTALL 48\" DIA. SEWER MANHOLE



**NOTE:**  
ALL PRIVATE STREETS ARE P.U.E., PUBLIC SEWER EASEMENTS AND PUBLIC DRAINAGE EASEMENTS TO BE PRIVATELY MAINTAINED BY THE HOA.

**BENCHMARK**  
CITY OF LAS VEGAS BENCHMARK 0LV09 36NWW6 RIVET & PLATE IN TOP OF CURB RETURN @ NW CORNER OF PAVILION CENTER & ALTA, 3024.16 FEET OR 921.767 METERS NAVD 1988 DATUM



**BASIS OF BEARINGS**  
NORTH 05° 59' 55\" WEST BEING THE BEARING OF THE WEST LINE OF SECTION 34, T 20 S, R 59 E, M.D.M., CITY OF LAS VEGAS, CLARK COUNTY, NEVADA, AS SHOWN BY MAP THEREOF ON FILE IN FILE 91, PAGE 28 OF PARCEL MAPS IN THE CLARK COUNTY RECORDERS OFFICE, CLARK COUNTY, NEVADA.

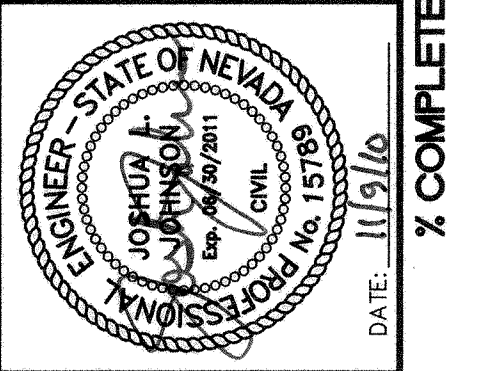
**LEGAL DESCRIPTION**  
BEING A SUBDIVISION OF A PORTION OF PARCEL 1 AS SHOWN BY MAP THEREOF ON FILE IN FILE 91, PAGE 28 OF PARCEL MAPS IN THE COUNTY RECORDERS OFFICE, CLARK COUNTY, NEVADA, LYING WITHIN SECTION 34, TOWNSHIP 20 SOUTH, RANGE 59 EAST, AND THE NORTH HALF (N 1/2) OF THE NORTH HALF (N 1/2) OF SECTION 3, TOWNSHIP 21 SOUTH, RANGE 59 EAST, M.D.M., CITY OF LAS VEGAS, CLARK COUNTY, NEVADA

Call before you Dig  
UnderGround  
1-702-455-7511  
1-702-229-6611

CALL BEFORE YOU DO OVERHEAD  
1-702-227-2929

Call before you Dig  
1-800-227-2600  
1-702-455-7544

APPROVED FOR CONSTRUCTION  
*Don Gregory*  
LAS VEGAS VALLEY WATER DISTRICT ENGINEERING SERVICES MANAGER  
PROJECT NO. 116536 DATE: 11/22/10



| PROJECT NO. | DATE | DESCRIPTION |
|-------------|------|-------------|
| 62023-970   |      |             |

**G.C. WALLACE COMPANIES**  
ENGINEERS | PLANNERS | SURVEYORS  
1500 S. UNIVERSITY BLVD., SUITE 200  
LAS VEGAS, NV 89102  
TEL: 702.891.2000 FAX: 702.891.2029 GCWALLACE.COM

**LAS VEGAS - SACRAMENTO - RENO**  
F:\Projects\600\62023-970\DWG\Production\BARCELONA.dwg  
Dmitri Kelley

**THE HOWARD HUGHES CORPORATION**  
SUMMERLIN VILLAGE 23A PARCEL J UNIT 2  
BARCELONA

**PLAN AND PROFILE 1**  
ALZINA COURT

H.39603

DRAWING 10774805-12  
12 OF 23 SHTS

12572