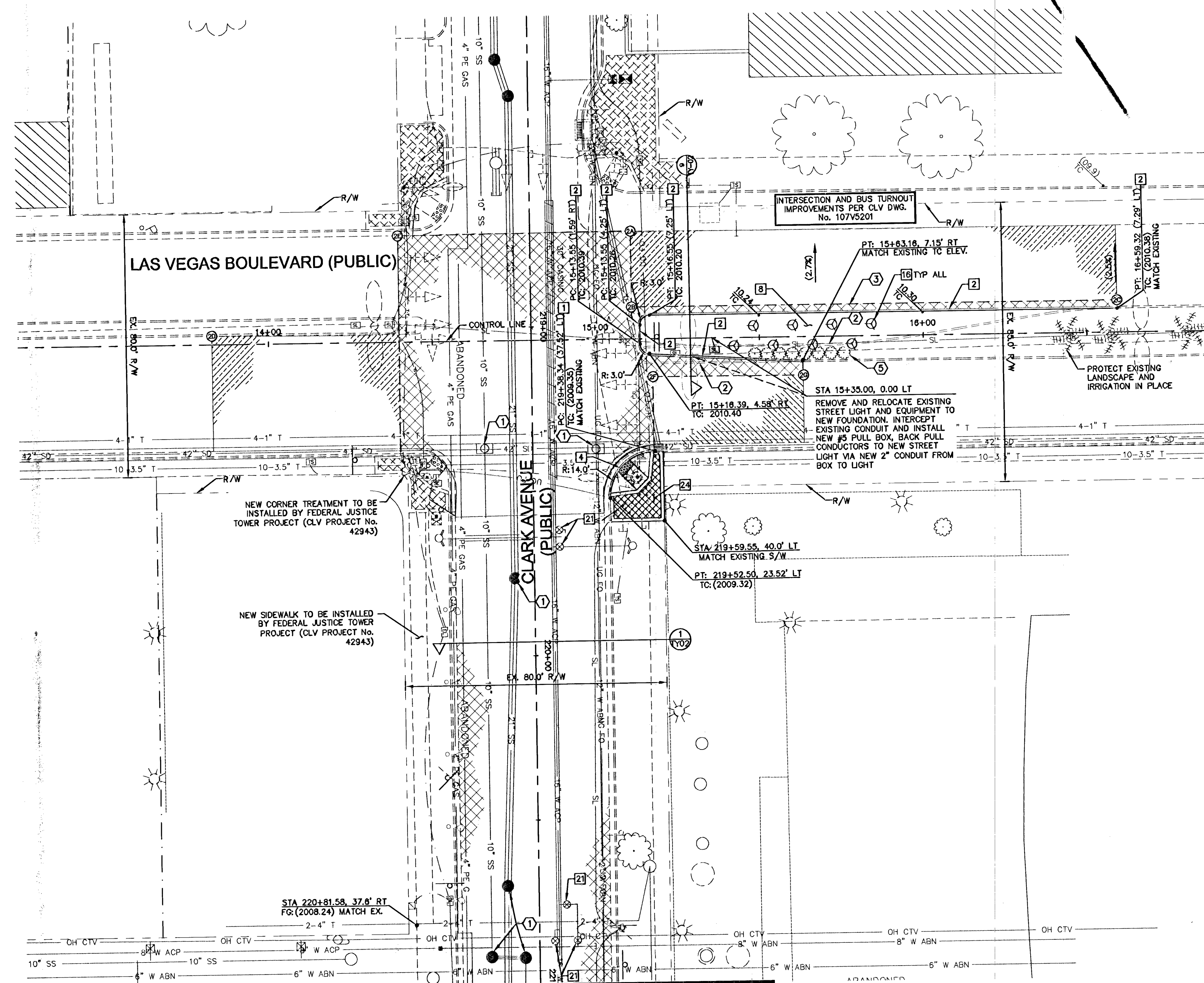
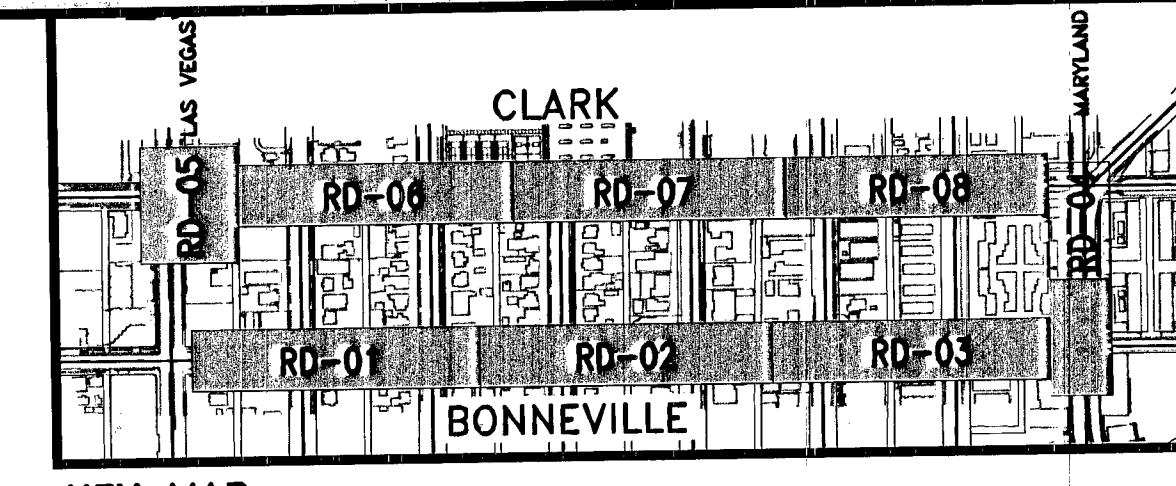
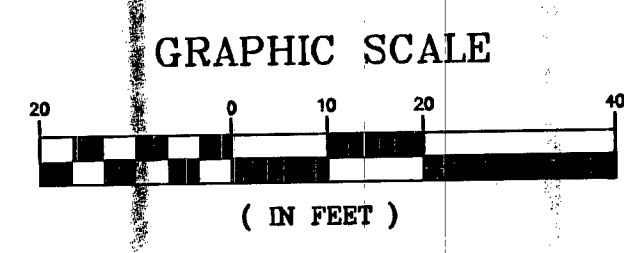
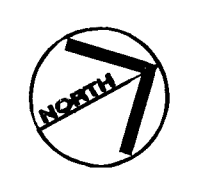


SEP 13, 2012 - 4:18pm - USER: Michael.Mesley
 K:\NVP_Public\Town\1092256\021_Bonneville-Clark
 Phase II\CADD\256021RD.dwg



MATCHLINE ~ STA 221+00
 SEE SHEET RD-06



CONSTRUCTION NOTES

- 1. ASPHALTIC CONCRETE PAVEMENT SECTION. (SEE TY SHEETS FOR STRUCTURAL SECTION)
- 2. 1" MILL AND 1" UTACS OVERLAY
- 3. CONSTRUCT "L" TYPE CURB AND GUTTER PER CCAUSD No. 218
- 4. CONSTRUCT "A" TYPE CURB PER CCAUSD No. 219 AND TYPICAL SECTIONS
- 5. CONSTRUCT CASE II SIDEWALK RAMP PER CCAUSD No. 235
- 6. CONSTRUCT CONCRETE SIDEWALK PER CCAUSD No. 234
- 7. FILL WITH DECOMPOSED GRANITE, 1/2" MINUS, COLOR: PINK CORAL, PER DETAIL C SHEET DT-01
- 8. INSTALL NEW 5 GALLON COTONEASTER DAMMERI 'CORAL BEAUTY' SHRUB. SEE DETAILS SHEET DT-01 FOR SHRUB INSTALLATION. MODIFY EXISTING IRRIGATION LINES AS APPROPRIATE FOR NEW SHRUB LOCATIONS
- 9. SEE UT SHEETS FOR WATERLINE, VALVE, AND FIRE HYDRANT MODIFICATIONS
- 10. INSTALL CENTENNIAL STANDARD PAVERS AND CONCRETE BORDER PER DETAILS A AND B, SHEET DT-01

DEMOLITION NOTES

- 1. ADJUST EXISTING MANHOLE RIM TO FINISHED GRADE
- 2. REMOVE EXISTING CURB AND GUTTER
- 3. SAWCUT AND REMOVE ASPHALT PAVEMENT TO EXISTING GUTTER
- 4. REMOVE EXISTING PCC MEDIAN UP TO EXISTING BACK OF CURB
- 5. REMOVE EXISTING LANDSCAPE SHRUBS, MODIFY EXISTING IRRIGATION LINES AS REQUIRED FOR NEW SHRUB LOCATIONS
- 6. REMOVE EXISTING SIDEWALK

GENERAL NOTES

- 1. ALL STATIONING AND OFFSETS ARE BASED ON CONTROL LINE.
- 2. ELEVATIONS, OFFSETS AND GRADES ARE AT BACK OF CURB UNLESS OTHERWISE NOTED. SEE DETAIL ON RD-09 FOR TYPICAL STATIONING OF PROPOSED RAMPS AT ALLEYS.
- 3. SEE HC SHEETS FOR CENTER LINE INFORMATION, BENCHMARK, AND BASIS OF BEARING.
- 4. ALL EXISTING UTILITY LOCATIONS SHOWN HEREIN ARE APPROXIMATE ONLY. IT SHALL BE THE CONTRACTOR'S RESPONSIBILITY TO DETERMINE THE EXACT VERTICAL AND HORIZONTAL LOCATION OF ALL EXISTING UNDERGROUND UTILITIES PRIOR TO COMMENCING CONSTRUCTION. NO REPRESENTATION IS MADE THAT ALL UTILITIES ARE SHOWN HEREON. THE ENGINEER ASSUMES NO RESPONSIBILITY FOR UTILITIES NOT SHOWN OR UTILITIES NOT SHOWN IN THEIR PROPER LOCATION.
- 5. CONTRACTOR TO FIELD VERIFY EXISTING SANITARY SEWER AND STORM DRAIN INVERT ELEVATIONS PRIOR TO CONSTRUCTION AND NOTIFY THE ENGINEER OF ANY DISCREPANCIES.
- 6. ALL MANHOLES, VALVES, VAULTS, ETC. LOCATED WITHIN THE LIMITS OF CONSTRUCTION SHALL BE ADJUSTED TO FINISHED GRADE.
- 7. SEE SHEET TY-02 FOR CONDUIT TRENCH PATCH STRUCTURAL SECTION. USE CONDUIT TRENCH PATCH STRUCTURAL SECTION IN AREAS OF CONDUIT INSTALLATION THAT ARE OUTSIDE LIMITS OF FULL PAVEMENT RECONSTRUCTION.

BASIS OF BEARING

THE BASIS OF BEARINGS FOR THIS SURVEY IS GRID NORTH AS DEFINED BY THE NORTH AMERICAN DATUM OF 1983 (NAD 83), NEVADA STATE PLANE EAST (2701) ZONE. SAID BEARINGS WERE DETERMINED BY STATIC GLOBAL POSITIONING SYSTEM (GPS) MEASUREMENTS PROCESSED BY THE NATIONAL GEODETIC SURVEY DIVISION OF THE NATIONAL OCEANIC AND ATMOSPHERIC ADMINISTRATION USING THE ON-LINE POSITIONING USER SERVICE (OPUS). THE REFERENCE FRAME USED WAS NAD83 (GORS96) WITH AN EPOCH OF 2002.0000. ALL DISTANCES SHOWN HEREON ARE GROUND VALUES.

BENCHMARK

CITY OF LAS VEGAS VERTICAL CONTROL POINT "6001 34SW6", BEING A RIVET & PLATE IN TOP OF CURB ON THE EAST SIDE OF MAIN BETWEEN BONNEVILLE & GARCES @ LIGHT POLE.

ELEVATION: 2027.08 (FEET)
 617.8544 (METERS)

CITY OF LAS VEGAS VERTICAL CONTROL DATED 06/2002 BASED UPON THE NORTH AMERICAN VERTICAL DATUM OF 1983 (NAVD 83).

SAWCUT POINTS

POINT	STATION	OFFSET
24	15+11.00	33.00' LT
28	15+11.00	9.75' LT
20	16+58.30	9.79' LT
26	13+82.75	2.68' LT
25	14+40.00	32.40' LT
27	15+17.35	11.50' RT
23	15+63.16	11.50' RT

CALL SOUTHWEST GAS
 at 365-2296 for Standby
 when excavating over or near
 HIGH PRESSURE GAS LINES

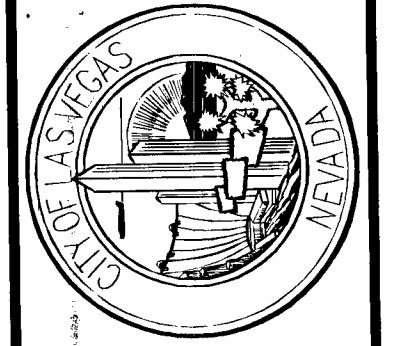


SAFETY ALERT
 Call Before You Overhead
 Call Before You Under Ground
 1-702-432-5300
 (RENTAL AND SERVICE CENTER OF TRANSPORTATION)

REVISIONS	DATE

SCALE (AS SHOWN): 1"=20'
 DRAWN BY: WW
 DESIGNED BY: PNM
 SCALE (AS SHOWN): N/A
 CHECKED BY: KWA
 DATE: OCTOBER, 2010

Kimley-Horn and Associates, Inc.
 Engineering, Planning, and Environmental Consultants
 2080 E. Flamingo Road, Suite 210, Las Vegas, NV 89119
 PH: (702) 735-4848
 FAX: (702) 735-4848



DEPARTMENT OF PUBLIC WORKS
 PROJECT: BONNEVILLE/CLARK ONEWAY COUPLER PHASE II IMPROVEMENT PLANS

SHEET: LAS VEGAS BLVD ROADWAY IMPROVEMENT PLAN

9/26/12
 SHEET NO. RD-05
 SHEET 16 OF 47
 DRAWING NO. 107V5541
 DE-SIP-0003(160)