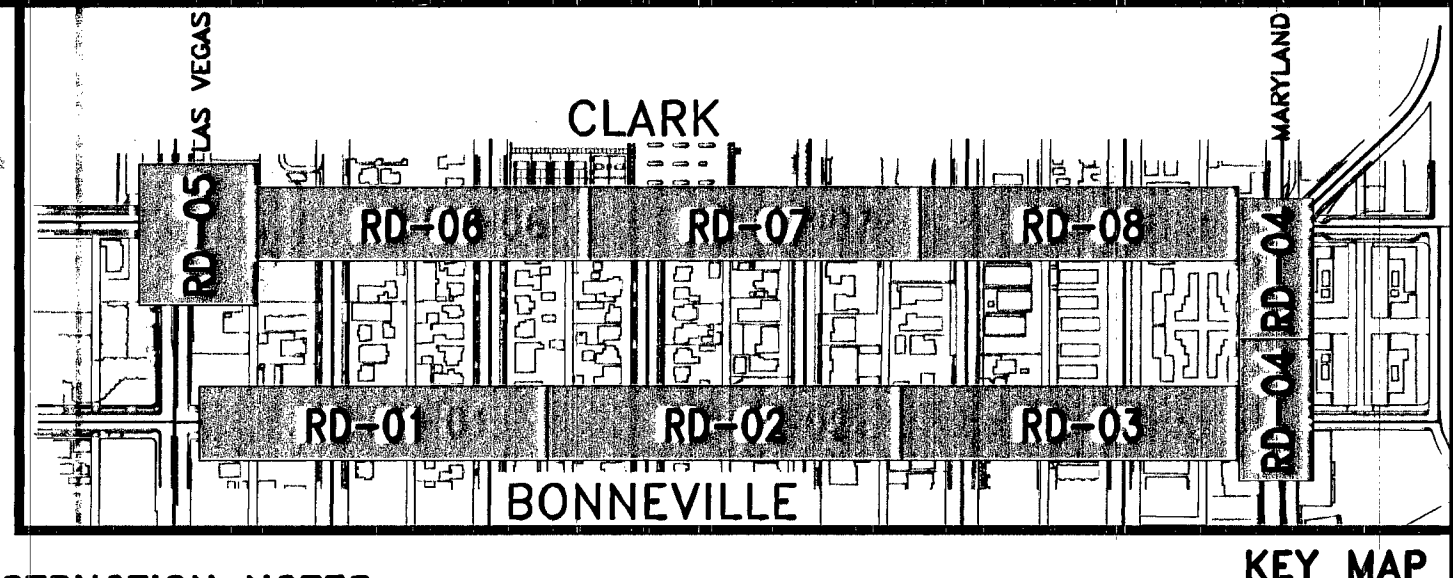
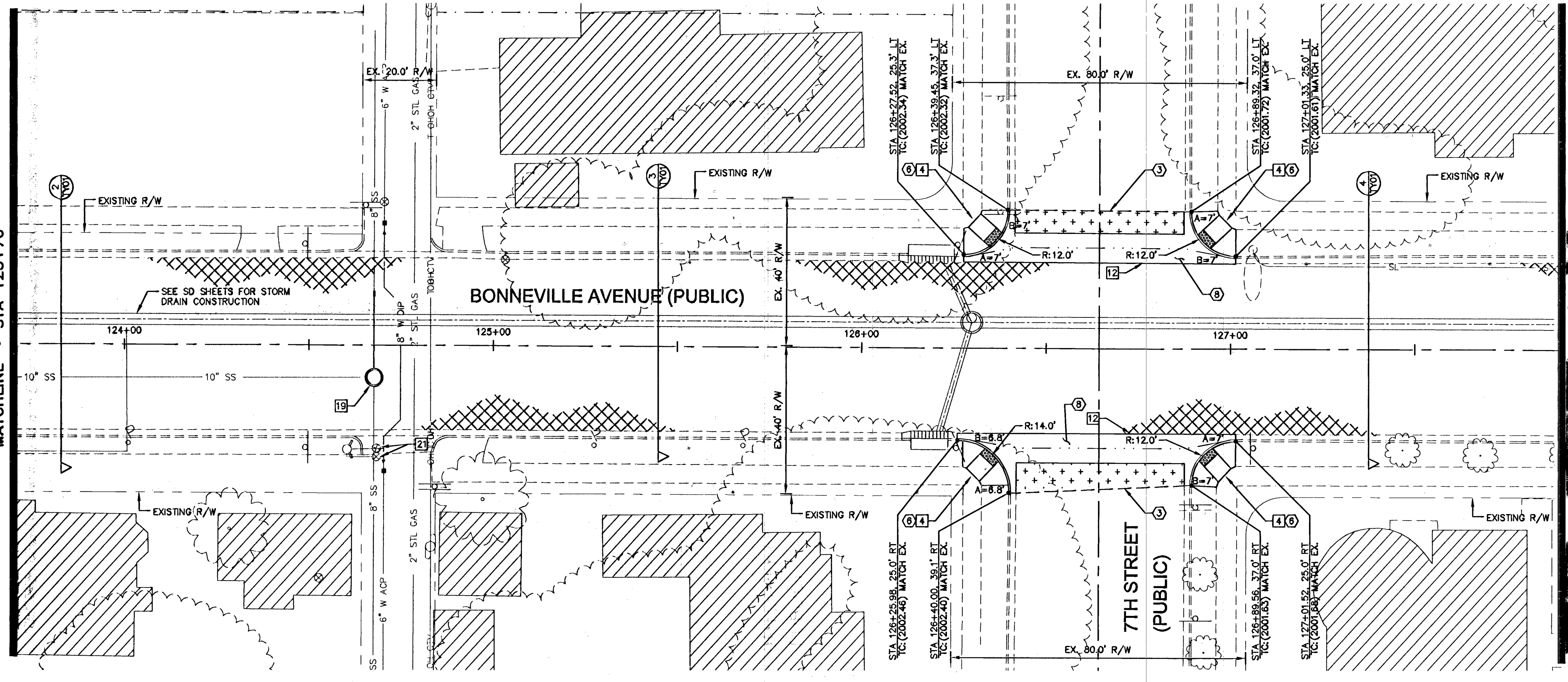
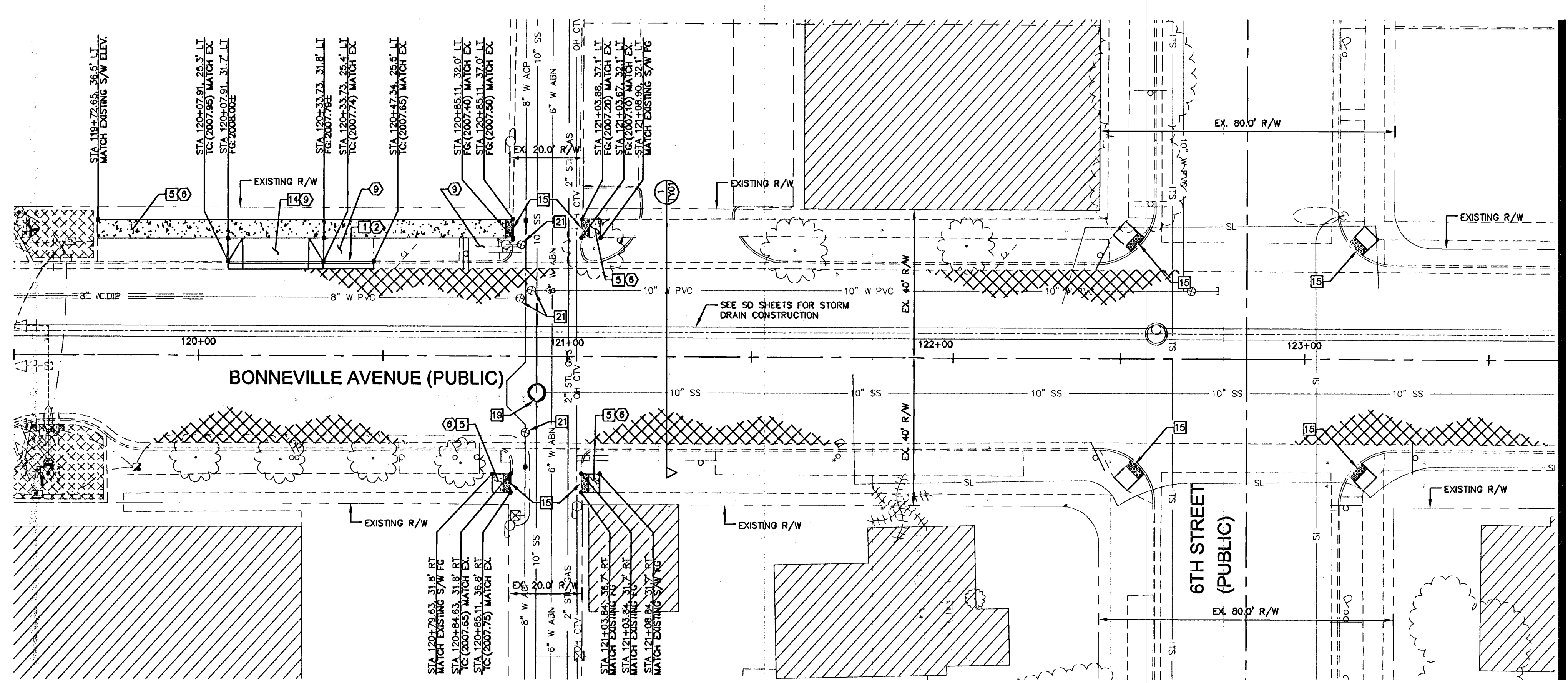


Sep 13, 2012 - 4:17pm - USER: Michael Mackay
 K:\AV_Public\Trans\1022256\021_Bonneville-Clark_Phase II\CADD\256021R02.dwg



CONSTRUCTION NOTES

- ASPHALTIC CONCRETE PAVEMENT SECTION. (SEE TY SHEETS FOR STRUCTURAL SECTION)
- 1\"/>

DEMOLITION NOTES

- ADJUST EXISTING MANHOLE RIM TO FINISHED GRADE
- REMOVE EXISTING CURB AND GUTTER
- SAWCUT AND REMOVE ASPHALT PAVEMENT TO EXISTING GUTTER
- REMOVE EXISTING LANDSCAPE SHRUBS, REMOVE EXISTING IRRIGATION LINES
- REMOVE EXISTING SIDEWALK
- REMOVE EXISTING UTILITY BOX
- REMOVE EXISTING VALLEY GUTTER
- REMOVE EXISTING DRIVEWAY

GENERAL NOTES

- ALL STATIONS AND OFFSETS ARE BASED ON CONTROL LINE.
- ELEVATIONS, OFFSETS AND GRADES ARE AT BACK OF CURB UNLESS OTHERWISE NOTED. SEE DETAIL ON RD-09 FOR TYPICAL STATIONING OF PROPOSED RAMPS AT ALLEYS.
- SEE HC SHEETS FOR CENTER LINE INFORMATION, BENCHMARK, AND BASIS OF BEARING.
- ALL EXISTING UTILITY LOCATIONS SHOWN HEREIN ARE APPROXIMATE ONLY. IT SHALL BE THE CONTRACTOR'S RESPONSIBILITY TO DETERMINE THE EXACT VERTICAL AND HORIZONTAL LOCATION OF ALL EXISTING UNDERGROUND UTILITIES PRIOR TO COMMENCING CONSTRUCTION. NO REPRESENTATION IS MADE THAT ALL UTILITIES ARE SHOWN HEREON. THE ENGINEER ASSUMES NO RESPONSIBILITY FOR UTILITIES NOT SHOWN OR UTILITIES NOT SHOWN IN THEIR PROPER LOCATION.
- CONTRACTOR TO FIELD VERIFY EXISTING SANITARY SEWER AND STORM DRAIN INVERT ELEVATIONS PRIOR TO CONSTRUCTION AND NOTIFY THE ENGINEER OF ANY DISCREPANCIES.
- ALL MANHOLES, VALVES, VAULTS, ETC. LOCATED WITHIN THE LIMITS OF CONSTRUCTION SHALL BE ADJUSTED TO FINISHED GRADE.
- SEE SHEET TY-02 FOR CONDUIT TRENCH PATCH STRUCTURAL SECTION. USE CONDUIT TRENCH PATCH STRUCTURAL SECTION IN AREAS OF CONDUIT INSTALLATION THAT ARE OUTSIDE LIMITS OF FULL PAVEMENT CONSTRUCTION.

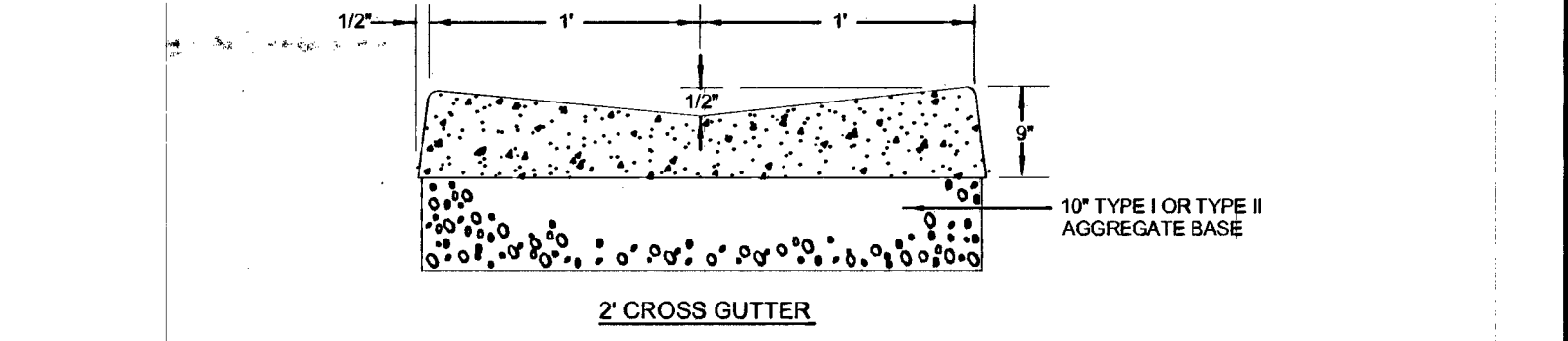
BASIS OF BEARING

THE BASIS OF BEARINGS FOR THIS SURVEY IS GRID NORTH AS DEFINED BY THE NORTH AMERICAN DATUM OF 1983 (NAD 83), NEVADA STATE PLANE EAST (2701) ZONE. SAID BEARINGS WERE DETERMINED BY STATIC GLOBAL POSITIONING SYSTEM (GPS) MEASUREMENTS PROCESSED BY THE NATIONAL GEODETIC SURVEY DIVISION OF THE NATIONAL OCEANIC AND ATMOSPHERIC ADMINISTRATION USING THE ON-LINE POSITIONING USER SERVICE (OPUS). THE REFERENCE FRAME USED WAS NAD83 (GORS8) WITH AN EPOCH OF 2002.0000. ALL DISTANCES SHOWN HEREON ARE GROUND VALUES.

BENCHMARK

CITY OF LAS VEGAS VERTICAL CONTROL POINT "6001 34SW6", BEING A RIVET & PLATE IN TOP OF CURB ON THE EAST SIDE OF MAIN BETWEEN BONNEVILLE & GARCES @ LIGHT POLE.
 ELEVATION: 2027.08 (FEET)
 617.9544 (METERS)

CITY OF LAS VEGAS VERTICAL CONTROL DATED 06/2002 BASED UPON THE NORTH AMERICAN VERTICAL DATUM OF 1988 (NAVD 88).



CALL SOUTHWEST GAS
 at 365-2296 for Standby
 when excavating over or near
 HIGH PRESSURE GAS LINES

GRAPHIC SCALE
 (IN FEET)

811
 Call before you dig
 what's below

SAFETY ALERT
 Call before you dig
 UnderGround
 Overhead

Call before you dig
 UnderGround
 1-702-432-5300
 DRAWING NO. 107V5541

DATE: _____	CHECKED BY: _____
SCALE (V): _____	DESIGNED BY: _____
SCALE (H): _____	DRAWN BY: _____

Kimley-Horn and Associates, Inc.
 Engineering, Planning, and Environmental Consultants
 2080 E. Flamingo Road, Suite 210, Las Vegas, NV 89119
 PH: 702.734.5666
 FAX: 702.735.4848

DEPARTMENT OF PUBLIC WORKS
 PROJECT: BONNEVILLE/CLARK ONEWAY COUPLLET PHASE II IMPROVEMENT PLANS
 SHEET: BONNEVILLE AVENUE ROADWAY IMPROVEMENT PLAN

Professional Engineer Seal:
 PETER N. MEYERHOFER
 CIVIL
 Exp: 12/31/13
 No. 18093

9/26/12
 SHEET NO. RD-01
 SHEET 12 OF 47
 DRAWING NO. 107V5541