

**BASIS OF BEARINGS**  
 NORTH 27°39'52" EAST, BEING THE BEARING OF THE CENTERLINE OF MAIN STREET BETWEEN COOLIDGE AVENUE AND HOOVER AVENUE AS SHOWN ON A RECORD OF SURVEY ON FILE IN THE OFFICE OF THE COUNTY RECORDER, CLARK COUNTY, NEVADA, IN FILE 184 AT PAGE 25.

**PROJECT BENCHMARK**  
 PROJECT DATUM: NORTH AMERICAN VERTICAL DATUM OF 1988 (NAVD88)  
 CITY OF LAS VEGAS BENCHMARK: 2LV01-2756  
 NAVD88 ELEVATION: 613.0214 METERS (2011.22 FEET)  
 NDOT MON IN TOP OF CURB ONE CORNER OF BONANZA AND MAIN.

**SIGNAGE LEGEND**

- SPEED LIMIT 25  
R2-1  
24" X 30"
- CROSS TRAFFIC DOES NOT STOP  
W4-4P  
24" X 12"
- STOP  
R1-1  
30" X 30"
- 2 HOUR PARKING 8AM-6PM  
R7-108  
12" X 18"
- AHEAD  
W16-9P  
24" X 8"
- W16-7P  
24" X 12"
- BIKE LANE  
R3-17  
18" X 24"
- LMPD PRISONER BUS ONLY  
RPC-73  
12" X 18"
- 3 AM TO 5:30 AM DAILY STREET SWEEPING  
RPC-21  
12" X 18"
- DETECTION CENTER BUSES ONLY  
RPC-61  
12" X 18"
- LEFT RIGHT ONLY  
RPC-62  
12" X 18"
- COMMERCIAL PARKING 30 MIN PER HOUR  
RPC-20  
12" X 18"
- NO PARKING COMMERCIAL VEHICLES ONLY 30 MIN TAXI ZONE 6-8 AM  
RPC-62  
12" X 18"
- NO PARKING COMMERCIAL VEHICLES ONLY 30 MIN TAXI ZONE 6-8 AM  
RPC-20  
12" X 18"
- ENDS  
W3-17BP  
24" X 8"

**LEGEND**

- "NO PARKING" FIRE LANE, PAINT CURBS WITH INDUSTRIAL STRENGTH ENAMEL (SAFETY RED) WHERE INDICATED
- RIGHT-OF-WAY LINE
- 6" X 6" TREE WELL WITH GRATE (REFER TO HARDSCAPE PLANS)
- 5' X 5' TREE WELL (REFER TO HARDSCAPE PLANS)
- STREET LIGHT (REFER TO STREET LIGHTING PLANS)
- STREET LIGHT (REFER TO STREET LIGHTING PLANS)
- STREET LIGHT (REFER TO STREET LIGHTING PLANS)
- BENCH (REFER TO HARDSCAPE PLANS)
- PROPOSED SIGN
- PLANTER (REFER TO HARDSCAPE PLANS)
- EXISTING LIGHT POLE
- EXISTING FIRE HYDRANT
- EXISTING UTILITY POLE

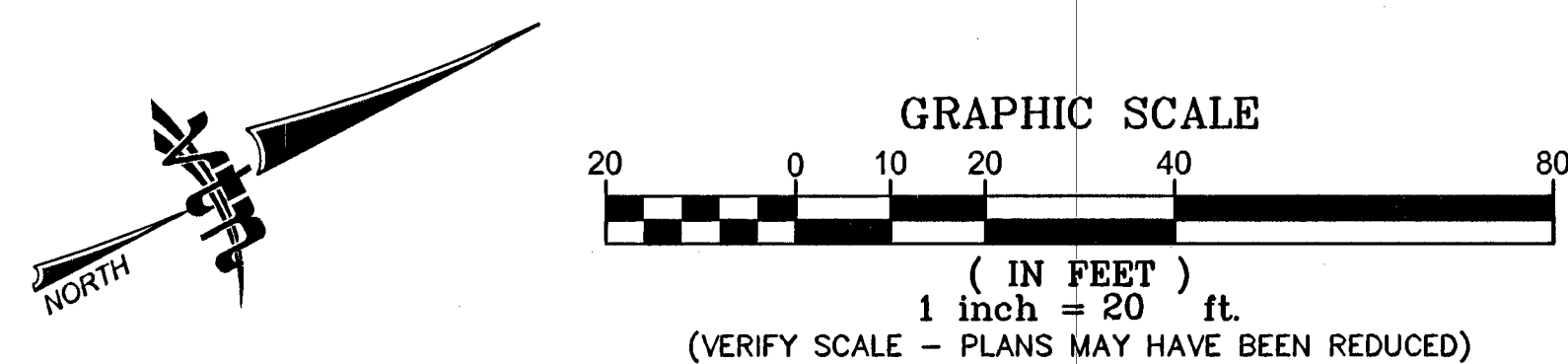
**TRAFFIC STRIPING & SIGNAGE LEGEND**

- 1 EXISTING "STREET NAME" SIGN (D3-1), "STOP" SIGN (R1-1) AND "CROSS TRAFFIC DOES NOT STOP" SIGN (W4-4P) TO REMAIN
- 2 EXISTING R7-108 "2 HOUR PARKING" SIGN TO REMAIN
- 3 EXISTING R1-1 "STOP" SIGN TO REMAIN
- 4 EXISTING "NO PARKING" SIGN TO REMAIN
- 5 EXISTING STREETLIGHT TO REMAIN
- 6 EXISTING R2-1 "SPEED LIMIT 25" SIGN TO REMAIN
- 7 INSTALL 24" SOLID WHITE STOP BAR PER CCAUSD No. 254 (THERMO PLASTIC)
- 8 INSTALL FLINT DECORATIVE CROSSWALK MATERIAL (RUNNING BOND PATTERN WITH TP38 BORDER, BRICK RED COLOR). REFER TO CCAUSD No. 254.1.S1 FOR GEOMETRY.
- 9 INSTALL R2-1 "SPEED LIMIT 25" SIGN PER CCAUSD No. 249.1 OR MOUNT ON STREET LIGHT POLE, SEE PLANS
- 10 INSTALL W11-2 AND W16-7P SIGN WITH FLUORESCENT YELLOW-GREEN BACKGROUND PER CCAUSD No. 249.1 OR MOUNT ON STREET LIGHT POLE, SEE PLANS
- 11 INSTALL R7-108 "2 HOUR PARKING" SIGN PER CCAUSD No. 249.1 OR MOUNT ON STREET LIGHT POLE, SEE PLANS
- 12 INSTALL "STREET NAME" SIGN (D3-1) & "STOP" SIGN (R1-1) PER CCAUSD No. 249.1 OR MOUNT ON STREET LIGHT POLE, SEE PLANS
- 13 INSTALL YIELD LINE PER MUTCD 3B-16 (THERMO PLASTIC)
- 14 INSTALL BLUE REFLECTIVE MARKER 8" FROM BACK OF CURB PER CLARK COUNTY FIRE DEPARTMENT STANDARDS
- 15 INSTALL "NO PARKING DETECTION CENTER BUSES ONLY" SIGN PER SIGNAGE LEGEND AND PER CCAUSD No. 249.1 OR MOUNT ON STREET LIGHT POLE, SEE PLANS
- 16 INSTALL "NO PARKING 3AM TO 5:30AM DAILY STREET SWEEPING" SIGN PER LEGEND AND CCAUSD No. 249.1 OR MOUNT ON STREET LIGHT POLE, SEE PLANS
- 17 INSTALL "LMPD PRISONER BUSES ONLY" SIGN PER LEGEND AND CCAUSD No. 249.1 OR MOUNT ON STREET LIGHT POLE, SEE PLANS
- 18 INSTALL "NO PARKING COMMERCIAL VEHICLES ONLY" SIGN PER LEGEND AND CCAUSD No. 249.1 OR MOUNT ON STREET LIGHT POLE, SEE PLANS
- 19 INSTALL TYPE 1 CENTERLINE PER USD No. 244 (POLYUREA)
- 20 INSTALL "CROSS TRAFFIC DOES NOT STOP" SIGN (W4-4P) PER CCAUSD No. 249.1 OR MOUNT ON STREET LIGHT POLE, SEE PLANS
- 21 INSTALL "NO PARKING" FIRE LANE BY PAINTING CURBS WITH RED LATEX PAINT
- 22 INSTALL 6" SOLID WHITE LINE PER USD No. 244.9 (THERMO PLASTIC)
- 23 INSTALL 20'-FT PREFORMED PANELS WITH INTEGRAL ARROW/BIKE SYMBOLS FOLLOWED BY SOLID GREEN PANELS, LEGEND PER MUTCD
- 24 INSTALL W11-2 AND W16-9P SIGN PER CCAUSD No. 249.1 OR MOUNT ON STREET LIGHT POLE, SEE PLANS
- 25 INSTALL R3-17 MOD SIGN PER CCAUSD No. 249.1 OR MOUNT ON STREET LIGHT POLE, SEE PLANS
- 26 INSTALL SKIP LINE PER USD. 244.9 (POLYUREA)
- 27 INSTALL "NO PARKING SYMBOL COMM PARKING" SIGN PER CCAUSD No. 249.1 OR MOUNT ON STREET LIGHT POLE, SEE PLANS
- 28 INSTALL "NO PARKING COMM PARKING ONLY" SIGN PER CCAUSD No. 249.1 OR MOUNT ON STREET LIGHT POLE, SEE PLANS
- 29 INSTALL R3-17 SIGN PER CCAUSD No. 249.1 OR MOUNT ON STREET LIGHT POLE, SEE PLANS
- 30 INSTALL PERFORMED THERMOPLASTIC GREEN BIKE LANE
- 31 INSTALL 12" SOLID WHITE LINE (THERMO PLASTIC)
- 32 INSTALL R3-17BP SIGN PER CCAUSD No. 249.1 OR MOUNT ON STREET LIGHT POLE, SEE PLANS

**NOTES:**

1. ALL STREETLIGHT EQUIPMENT REMOVED SHALL BE RETURNED TO CLV SERVICE YARD. CALL 229-3661, 24 HOURS BEFORE DELIVERY, TO SET UP TIME. CONTRACTOR MUST HAVE A MEANS TO UNLOAD EQUIPMENT. CONTRACTOR SHALL BE RESPONSIBLE FOR ALL DAMAGE INCURRED IN THIS PROCESS.
2. EXISTING STREETLIGHTS TO REMAIN IN OPERATION UNTIL NEW SYSTEMS ARE OPERATIONAL.
3. ALL UNDERGROUND CONDUIT INSTALLED SHALL HAVE RED, CONTINUOUS MARKING TAPE INSTALLED IN TRENCH 18" BELOW FINISH GRADE.
4. CONTRACTOR SHALL TAKE ALL PRECAUTIONARY MEASURES TO PROTECT EXISTING IMPROVEMENTS FROM DAMAGE. ALL IMPROVEMENTS DAMAGED BY CONTRACTOR'S OPERATIONS SHALL BE REPAIRED OR REPLACED TO THE SATISFACTION OF THE ENGINEER AT THE EXPENSE OF THE CONTRACTOR.
5. ALL PULL BOX COVERS SHALL BE BONDED PER USD NO 323
6. CONDUIT ROUTING AND PULL BOX LOCATIONS ARE SHOWN SCHEMATICALLY ON THE PLANS AND MAY VARY IN THE FIELD.
7. CONTRACTOR TO COORDINATE AND FIT PULL BOXES INTO SIDEWALK JOINTS.
8. CONTRACTOR TO VERIFY LOCATION OF ALL UNDERGROUND UTILITIES PRIOR TO TRENCHING.
9. REMOVED SIGNS SHALL BE SALVAGED BY THE CONTRACTOR AND DELIVERED TO THE CITY OF LAS VEGAS EAST SERVICE YARD AT 3104 EAST BONANZA RD, CALL (702) 229-3361, 24 HOURS BEFORE DELIVERY TO SET UP TIME. CONTRACTOR MUST HAVE A MEANS TO UNLOAD EQUIPMENT AND SHALL BE RESPONSIBLE FOR ALL DAMAGES INCURRED IN THIS PROCESS.

**NOTE:**  
 NO POLES, PLANTERS, TREES WITHIN 5-FT OF WATERLINES, LATERALS, METERS, VAULTS. NO WATERLINES UNDER CURB, GUTTER AND PAVERS.



MATCHLINE STA 33+00.00 SEE SHEET SS3

MATCHLINE STA 37+00.00 SEE BELOW LEFT

MATCHLINE STA 37+00.00 SEE UPPER RIGHT

DRAWN BY: 11/29/2012		DESIGNED BY: 11/29/2012		CHECKED BY: 11/29/2012		PROJECT NO: SCALE: 1"=20'	
DAM		RCB/DAM		RCH		7350	
NOVEMBER 2012		NOVEMBER 2012		NOVEMBER 2012		NOVEMBER 2012	
SHEET		SHEET		SHEET		SHEET	
SS4		SS4		SS4		SS4	
DRAWING NO. 107V6664-1ST		DRAWING NO. 107V6664-1ST		DRAWING NO. 107V6664-1ST		DRAWING NO. 107V6664-1ST	

**PUBLIC WORKS DEPARTMENT**  
 333 N. RANCHO DRIVE  
 LAS VEGAS, NEVADA 89106  
 702-229-6272

**PAVEMENT MARKING AND SIGNAGE PLAN**  
 STA 33+00.00 TO STA 40+00.00

**DOWNTOWN PEDESTRIAN & BICYCLE IMPROVEMENTS**  
 1ST STREET  
 HOOVER AVENUE TO BRIDGER AVENUE

**FAST**  
 Call before you Dig  
 1-702-432-5300

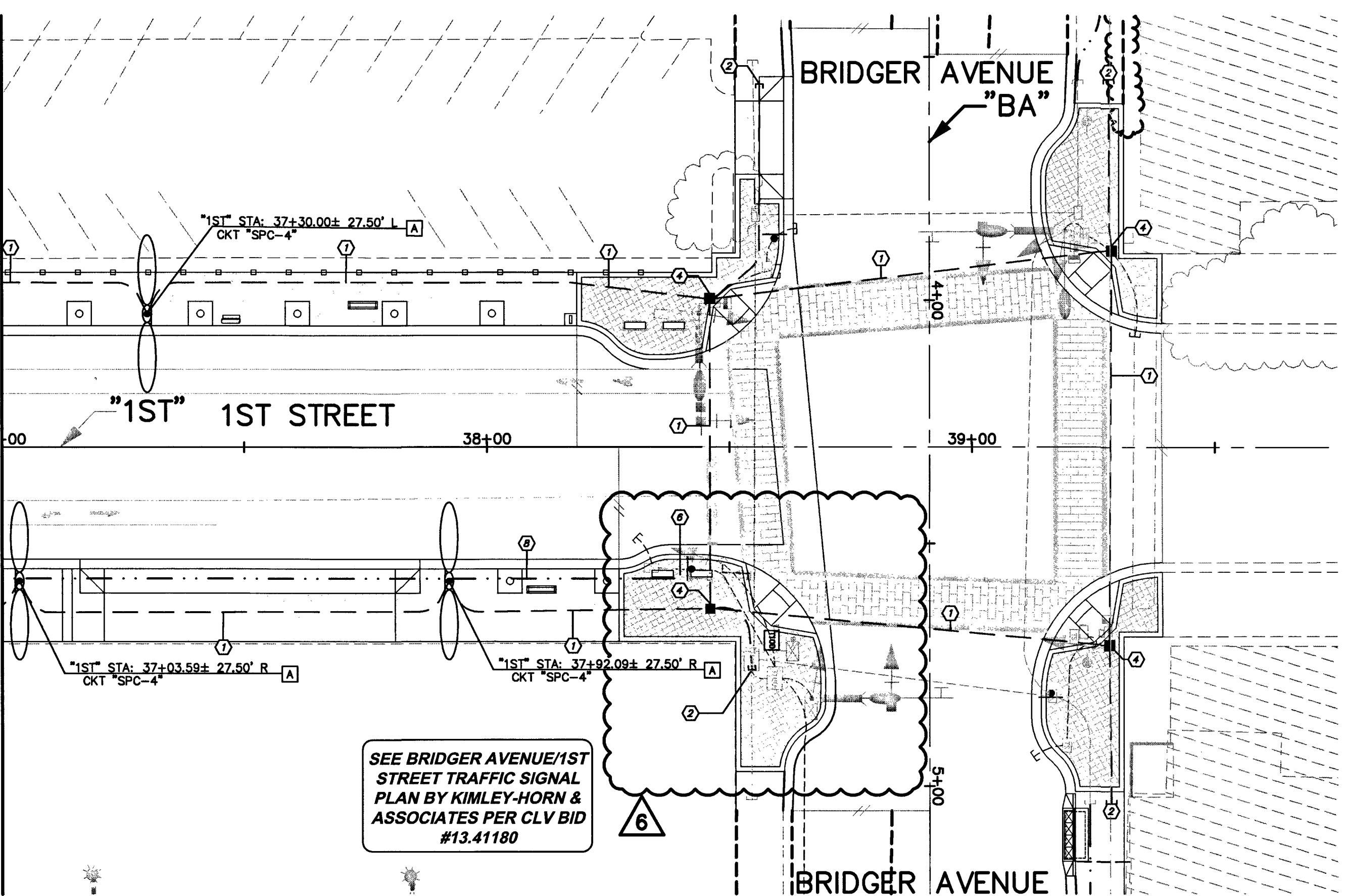
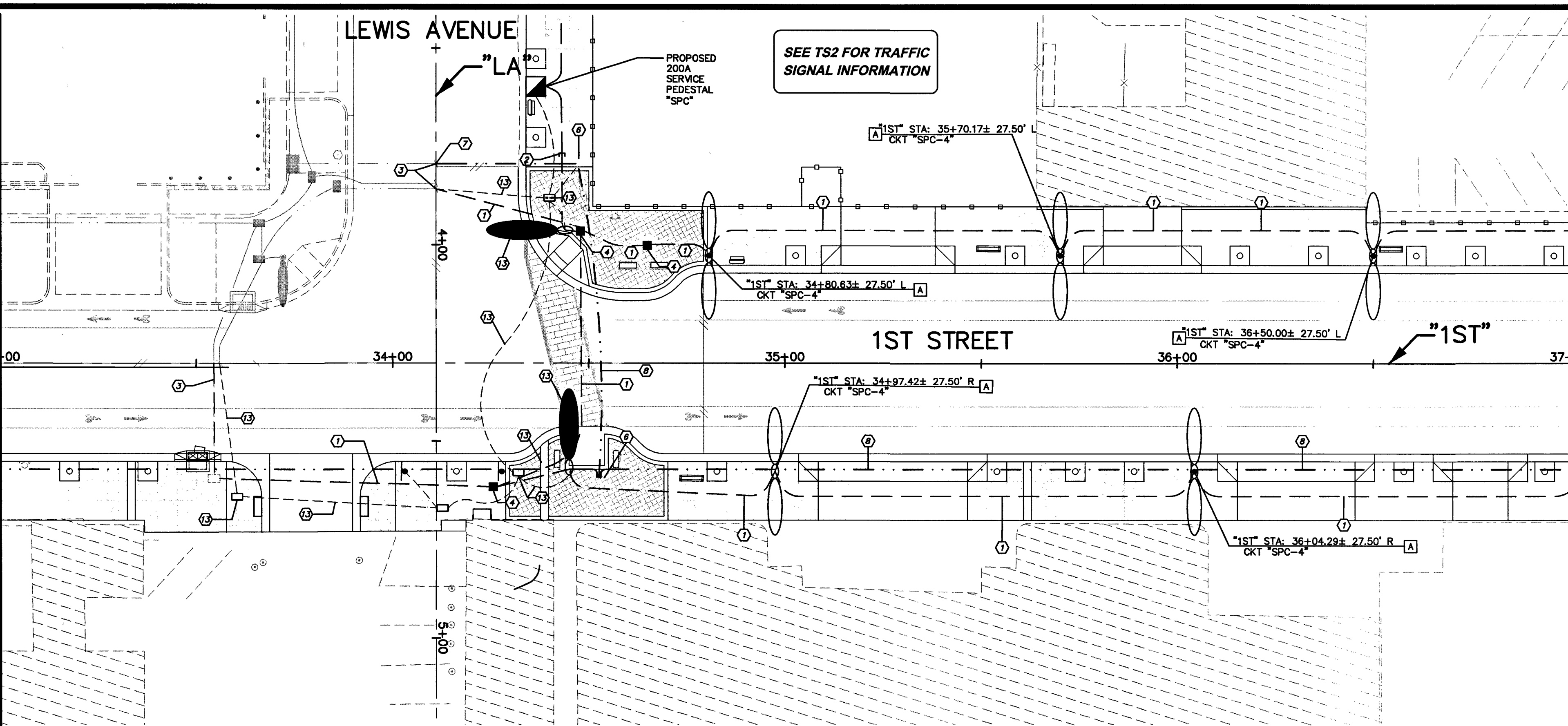
**Call before you Dig**  
 1-702-227-2929

**ROBERT HOSEA INC.**  
 CIVIL  
 No. 1011  
 EXP. 06/06/10  
 5-16-13

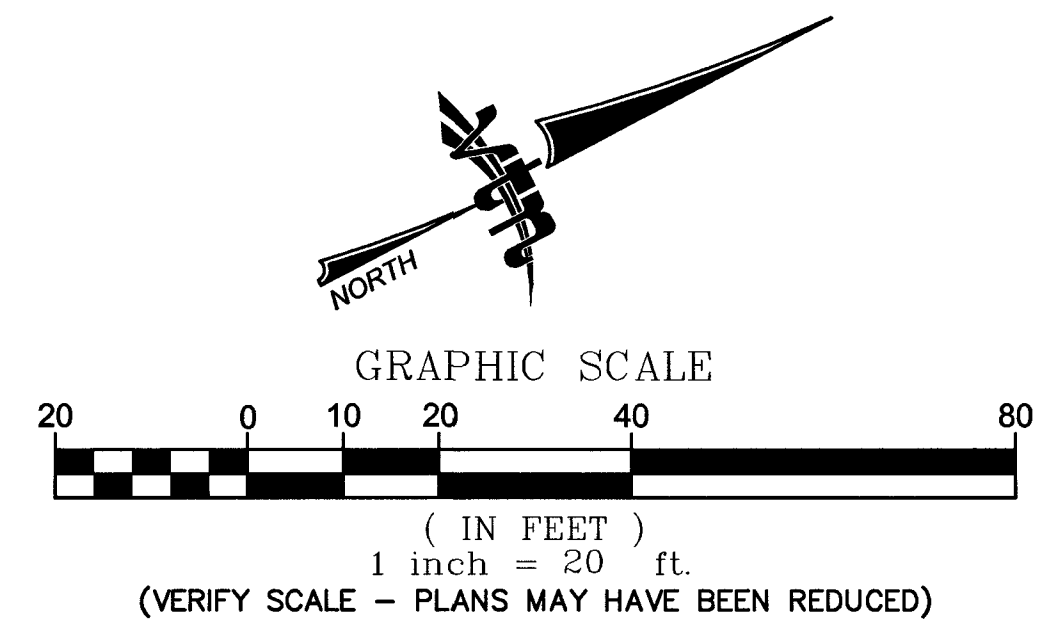
**H#38974**

MATCHLINE STA 33+00.00 SEE SHEET SL3

MATCHLINE STA 37+00.00 SEE UPPER RIGHT



MATCHLINE STA 37+00.00 SEE BELOW LEFT



**NOTES**

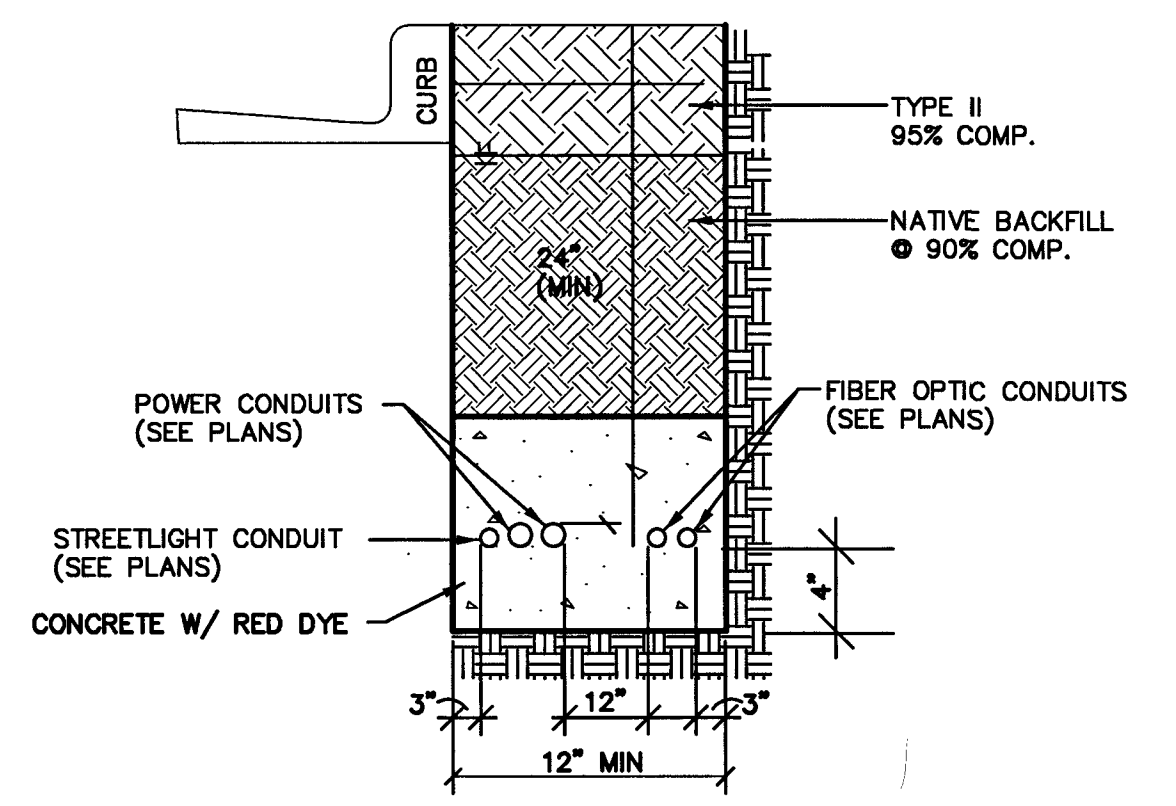
1. ALL STREETLIGHT EQUIPMENT REMOVED SHALL BE RETURNED TO CLV SERVICE YARD. CALL 229-3661, 24 HOURS BEFORE DELIVERY, TO SET UP TIME. CONTRACTOR MUST HAVE A MEANS TO UNLOAD EQUIPMENT. CONTRACTOR SHALL BE RESPONSIBLE FOR ALL DAMAGE INCURRED IN THIS PROCESS.
2. EXISTING STREETLIGHTS TO REMAIN IN OPERATION UNTIL NEW SYSTEMS ARE OPERATIONAL.
3. ALL UNDERGROUND CONDUIT INSTALLED SHALL HAVE RED, CONTINUOUS MARKING TAPE INSTALLED IN TRENCH 18" BELOW FINISH GRADE.
4. CONTRACTOR SHALL TAKE ALL PRECAUTIONARY MEASURES TO PROTECT EXISTING IMPROVEMENTS FROM DAMAGE. ALL IMPROVEMENTS DAMAGED BY CONTRACTOR'S OPERATIONS SHALL BE REPAIRED OR REPLACED TO THE SATISFACTION OF THE ENGINEER AT THE EXPENSE OF THE CONTRACTOR.
5. ALL PULL BOX COVERS SHALL BE BONDED PER USD NO 323
6. CONDUIT ROUTING AND PULL BOX LOCATIONS ARE SHOWN SCHEMATICALLY ON THE PLANS AND MAY VARY IN THE FIELD. ALL STREET LIGHTS AND RECEPTACLE CONDUIT SHALL BE ROUTED ON BACK OF THE CURB.
7. CONTRACTOR TO COORDINATE AND FIT PULL BOXES INTO SIDEWALK JOINTS.
8. CONTRACTOR TO VERIFY LOCATION OF ALL UNDERGROUND UTILITIES PRIOR TO TRENCHING.
9. NO POLES, PLANTERS, TREES WITHIN 5-FT OF WATERLINES, LATERALS, METERS, VAULTS. NO WATERLINES UNDER CURB, GUTTER AND PAVERS.
10. CONDUIT SHOWN DIAGRAMMATICALLY ONLY. SEE CONDUIT INSTALLATION DETAIL FOR SPECIFIC LOCATION.

**LEGEND**

- RIGHT-OF-WAY LINE
- STREET LIGHT CONDUIT
- 6' x 6' TREE WELL WITH GRATE (REFER TO HARDSCAPE PLANS)
- 5' x 5' TREE WELL (REFER TO HARDSCAPE PLANS)
- EXISTING LIGHT POLE
- EXISTING FIRE HYDRANT
- EXISTING UTILITY POLE
- 100 WATT "HPS" STREET LIGHTS
- 100 WATT/150 "HPS" WATT STREET LIGHTS
- 400 WATT "HPS" STREET LIGHTS

**STREET LIGHT CONSTRUCTION NOTES**

- A FURNISH AND INSTALL DOUBLE ARM STREET LIGHT ASSEMBLY AND FOUNDATION WITH 100W FIXTURES. ARM LENGTH AND POLE HEIGHT PER DETAIL "B" ON SHEET SL6
- B FURNISH AND INSTALL DOUBLE ARM STREET LIGHT ASSEMBLY AND FOUNDATION WITH 100W AND 150W FIXTURES. ARM LENGTH AND POLE HEIGHT PER DETAIL "B" ON SHEET SL6
- C FURNISH AND INSTALL DOUBLE ARM STREET LIGHT ASSEMBLY AND FOUNDATION WITH 150W FIXTURES. ARM LENGTH AND POLE HEIGHT PER DETAIL "B" ON SHEET SL6
- D FURNISH AND INSTALL DOUBLE ARM STREET LIGHT ASSEMBLY WITH 100W/150W FIXTURES. ARM LENGTH AND POLE HEIGHT PER DETAIL "B" ON SHEET SL6. INSTALL ON EXISTING FOUNDATION.
- ① PROVIDE AND INSTALL W/ 2-#4 THW & 1-#8 THW GROUND CONDUCTOR IN UNDERGROUND 2" PVC CONDUIT
- ② STUB & CAP CONDUIT W/ 1-#8 TRACER WIRE IN 2" CONDUIT 5' PAST IMPROVEMENTS
- ③ 2" PVC CONDUIT W/ 1-#8 TRACER WIRE (TO INTERCEPT W/ EXISTING CONDUIT & WIRE)
- ④ PROVIDE AND INSTALL NO. 3 1/2 LIGHTING PULL BOX PER CCAUSD NO. 323 & 326. LID TO BE MARKED STREET LIGHTING
- ⑤ PROVIDE AND INSTALL NO. 5 LIGHTING PULL BOX PER CCAUSD NO. 323 & 326. LID TO BE MARKED STREET LIGHTING
- ⑥ PROVIDE AND INSTALL P-30 PULL BOX PER CCAUSD NO. 761 & 764. LID TO BE MARKED FIBER OPTIC
- ⑦ INTERCEPT EXISTING 4" INTERCONNECT CONDUIT AND CONNECT 4" INTERCONNECT CONDUIT WITH 6-PAIR, REA-PE-39, NO.22 AWG TWISTED WIRE PAIR CABLE OR EQUAL.
- ⑧ PROVIDE AND INSTALL 4" INTERCONNECT CONDUIT WITH 6-PAIR, REA-PE-39, NO.22 AWG TWISTED WIRE PAIR CABLE OR EQUAL.
- ⑨ EXISTING STREETLIGHT TO BE REMOVED. RE-USE EXISTING CIRCUIT, CONDUIT AND WIRE FOR NEW 100 WATT STREET LIGHT AT THIS LOCATION.
- ⑩ PROVIDE AND INSTALL 2-3"C. SEE TRAFFIC SIGNAL SHEETS.
- ⑪ INTERCEPT EXISTING CONDUIT.
- ⑫ EXISTING STREETLIGHT TO BE REMOVED. RE-USE EXISTING DUAL ARM CIRCUIT, CONDUIT AND WIRE FOR NEW 100W/150W STREET LIGHT AT THIS LOCATION.
- ⑬ SHOWN FOR CLARITY. REFER TO TRAFFIC SIGNAL DRAWINGS



**CONDUIT INSTALLATION DETAIL**  
NOT TO SCALE

**FAST**  
Call before you UnderGround  
1-702-432-5300  
FREWAY AND ARTERIAL SYSTEM OF TRANSPORTATION

AVOID HITTING OVERHEAD POWERLINES ITS COSTLY.  
CALL BEFORE YOU DO OVERHEAD  
Call 811  
1-702-227-2929

Call before you Dig  
Avoid cutting underground utility lines. It's costly.  
Call 811

PUBLIC WORKS DEPARTMENT 2727 SOUTH RAINBOW BOULEVARD LAS VEGAS, NV 89108 702-259-8700 WWW.VTNV.COM		STREET LIGHTING PLAN STA 33+00.00 TO STA 40+00.00	
DOWNTOWN PEDESTRIAN & BICYCLE IMPROVEMENTS TO 1ST STREET - HOOVER AVENUE TO BRIDGER AVENUE		DRAWN BY: 1/29/2014	
		DESIGNED BY: 1/29/2014	
		CHECKED BY: 1/29/2014	
		PROJECT NO: SCALE HORIZ. 1"=40'	
		VERT. N/A	
SHEET SL4		48 OF 83 SHEETS	
DRAWING NO. 1075664-1ST			