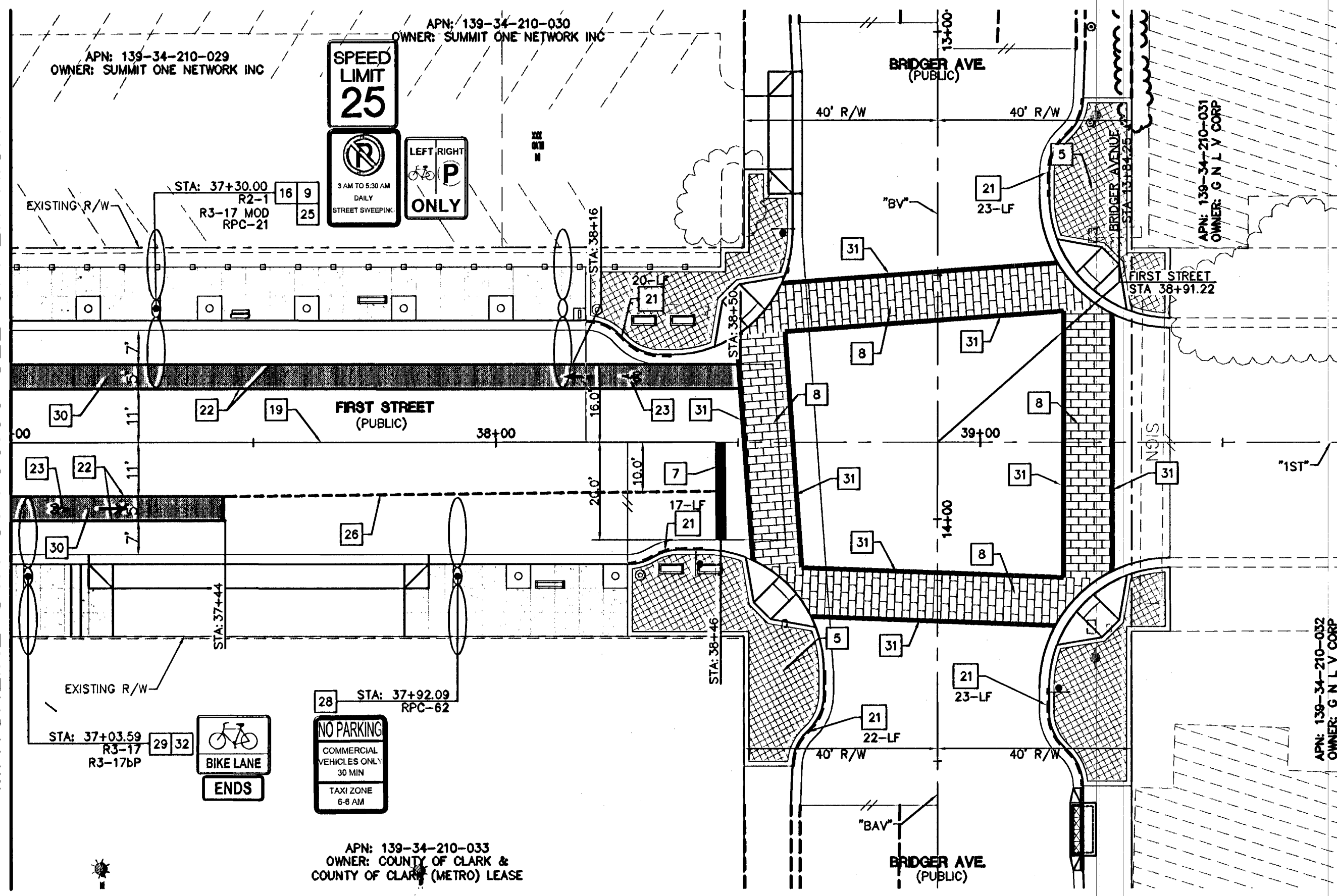
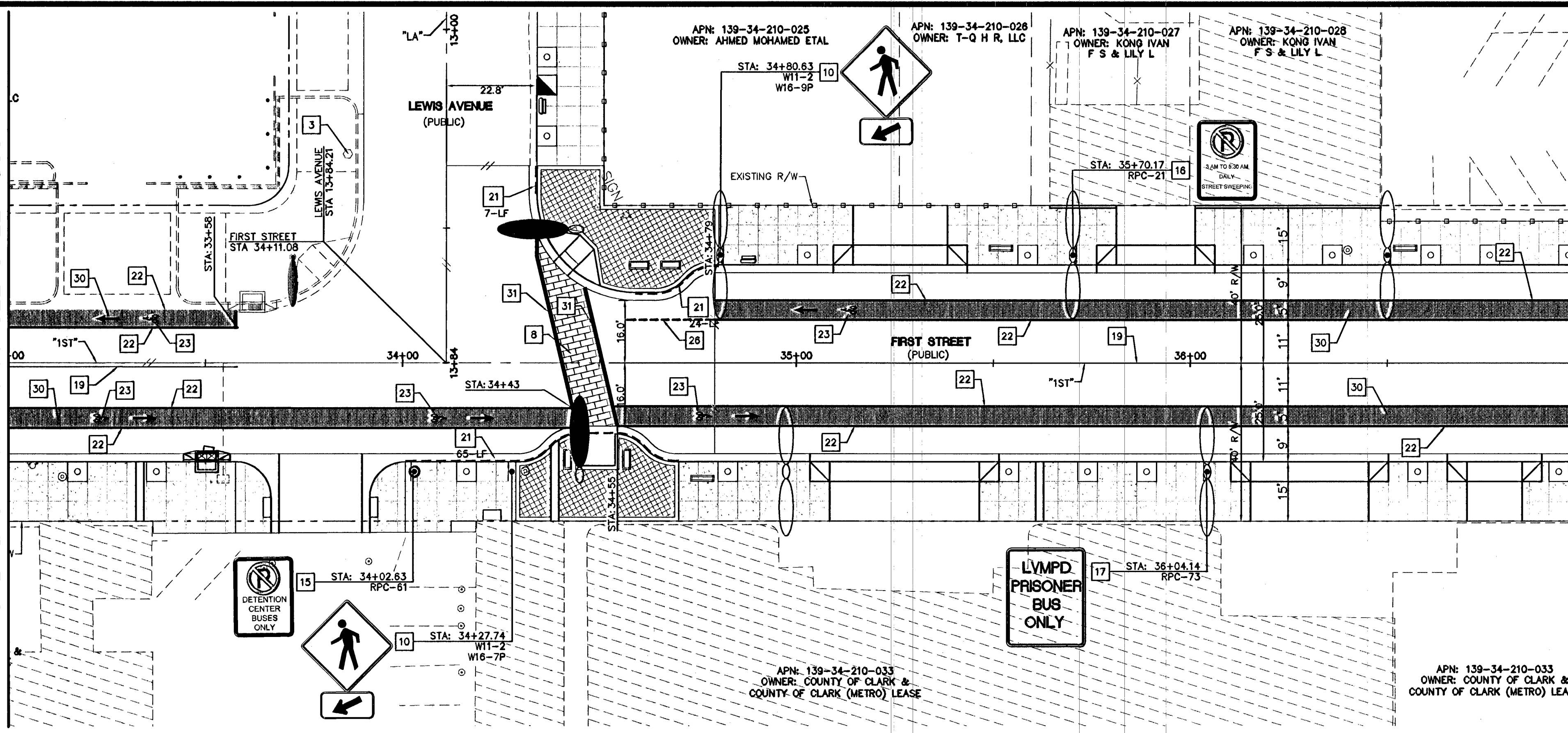


MATCHLINE STA 33+00.00 SEE SHEET SS3

MATCHLINE STA 37+00.00 SEE UPPER RIGHT

MATCHLINE STA 37+00.00 SEE BELOW LEFT



BASIS OF BEARINGS
 NORTH 27°39'52" EAST, BEING THE BEARING OF THE CENTERLINE OF MAIN STREET BETWEEN COOLIDGE AVENUE AND HOOVER AVENUE AS SHOWN ON A RECORD OF SURVEY ON FILE IN THE OFFICE OF THE COUNTY RECORDER, CLARK COUNTY, NEVADA, IN FILE 184 AT PAGE 25.

PROJECT BENCHMARK
 PROJECT DATUM: NORTH AMERICAN VERTICAL DATUM OF 1988 (NAVD88)
 CITY OF LAS VEGAS BENCHMARK: 2LV01-2756
 NAVD88 ELEVATION: 613.0214 METERS (2011.22 FEET)
 NDOT MON IN TOP OF CURB ONE CORNER OF BONANZA AND MAIN.

SIGNAGE LEGEND

- SPEED LIMIT 25
R2-1
24" X 30"
- CROSS TRAFFIC DOES NOT STOP
W4-4P
24" X 12"
- STOP
R1-1
30" X 30"
- 2 HOUR PARKING 8AM-6PM
R7-108
12" X 18"
- AHEAD
W16-9P
24" X 8"
- W16-7P
24" X 12"
- BIKE LANE
R3-17
18" X 24"
- LMPD PRISONER BUS ONLY
RPC-73
12" X 18"
- 3 AM TO 5:30 AM DAILY STREET SWEEPING
RPC-21
12" X 18"
- NO PARKING
RPC-61
12" X 18"
- LEFT RIGHT ONLY
RPC-62
12" X 18"
- W16-9P
24" X 8"
- W16-7P
24" X 12"
- BIKE LANE
R3-17
18" X 24"
- NO PARKING
RPC-20
12" X 18"
- W3-17P
24" X 8"

LEGEND

- "NO PARKING" FIRE LANE, PAINT CURBS WITH INDUSTRIAL STRENGTH ENAMEL (SAFETY RED) WHERE INDICATED
- RIGHT-OF-WAY LINE
- 6" X 6" TREE WELL WITH GRATE (REFER TO HARDSCAPE PLANS)
- 5' X 5' TREE WELL (REFER TO HARDSCAPE PLANS)
- STREET LIGHT (REFER TO STREET LIGHTING PLANS)
- STREET LIGHT (REFER TO STREET LIGHTING PLANS)
- STREET LIGHT (REFER TO STREET LIGHTING PLANS)
- BENCH (REFER TO HARDSCAPE PLANS)
- PROPOSED SIGN
- PLANTER (REFER TO HARDSCAPE PLANS)
- EXISTING LIGHT POLE
- EXISTING FIRE HYDRANT
- EXISTING UTILITY POLE

TRAFFIC STRIPING & SIGNAGE LEGEND

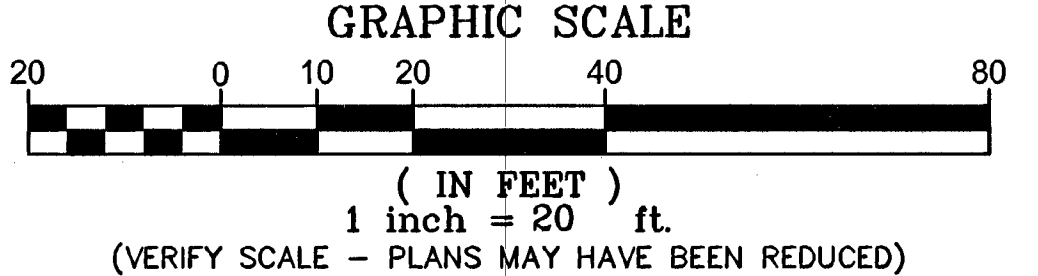
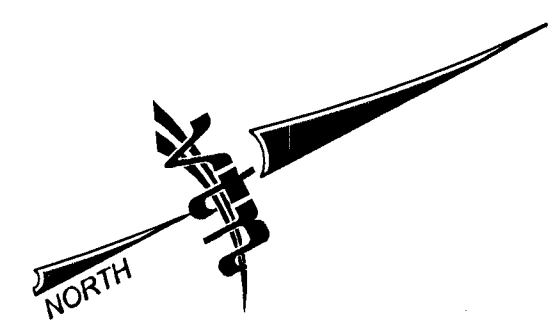
- 1 EXISTING "STREET NAME" SIGN (D3-1), "STOP" SIGN (R1-1) AND "CROSS TRAFFIC DOES NOT STOP" SIGN (W4-4P) TO REMAIN
- 2 EXISTING R7-108 "2 HOUR PARKING" SIGN TO REMAIN
- 3 EXISTING R1-1 "STOP" SIGN TO REMAIN
- 4 EXISTING "NO PARKING" SIGN TO REMAIN
- 5 EXISTING STREETLIGHT TO REMAIN
- 6 EXISTING R2-1 "SPEED LIMIT 25" SIGN TO REMAIN
- 7 INSTALL 24" SOLID WHITE STOP BAR PER CCAUSD No. 254 (THERMO PLASTIC)
- 8 INSTALL FLINT DECORATIVE CROSSWALK MATERIAL (RUNNING BOND PATTERN WITH TP38 BORDER, BRICK RED COLOR). REFER TO CCAUSD No. 254.1.S1 FOR GEOMETRY.
- 9 INSTALL R2-1 "SPEED LIMIT 25" SIGN PER CCAUSD No. 249.1 OR MOUNT ON STREET LIGHT POLE, SEE PLANS
- 10 INSTALL W11-2 AND W16-7P SIGN WITH FLUORESCENT YELLOW-GREEN BACKGROUND PER CCAUSD No. 249.1 OR MOUNT ON STREET LIGHT POLE, SEE PLANS
- 11 INSTALL R7-108 "2 HOUR PARKING" SIGN PER CCAUSD No. 249.1 OR MOUNT ON STREET LIGHT POLE, SEE PLANS
- 12 INSTALL "STREET NAME" SIGN (D3-1) & "STOP" SIGN (R1-1) PER CCAUSD No. 249.1 OR MOUNT ON STREET LIGHT POLE, SEE PLANS
- 13 INSTALL YIELD LINE PER MUTCD 3B-16 (THERMO PLASTIC)
- 14 INSTALL BLUE REFLECTIVE MARKER 8" FROM BACK OF CURB PER CLARK COUNTY FIRE DEPARTMENT STANDARDS
- 15 INSTALL "NO PARKING DETENTION CENTER BUSES ONLY" SIGN PER SIGNAGE LEGEND AND PER CCAUSD No. 249.1 OR MOUNT ON STREET LIGHT POLE, SEE PLANS
- 16 INSTALL "NO PARKING 3AM TO 5:30AM DAILY STREET SWEEPING" SIGN PER LEGEND AND CCAUSD No. 249.1 OR MOUNT ON STREET LIGHT POLE, SEE PLANS
- 17 INSTALL "LMPD PRISONER BUSES ONLY" SIGN PER LEGEND AND CCAUSD No. 249.1 OR MOUNT ON STREET LIGHT POLE, SEE PLANS
- 18 INSTALL "NO PARKING COMMERCIAL VEHICLES ONLY" SIGN PER LEGEND AND CCAUSD No. 249.1 OR MOUNT ON STREET LIGHT POLE, SEE PLANS
- 19 INSTALL TYPE 1 CENTERLINE PER USD No. 244 (POLYUREA)
- 20 INSTALL "CROSS TRAFFIC DOES NOT STOP" SIGN (W4-4P) PER CCAUSD No. 249.1 OR MOUNT ON STREET LIGHT POLE, SEE PLANS
- 21 INSTALL "NO PARKING" FIRE LANE BY PAINTING CURBS WITH RED LATEX PAINT
- 22 INSTALL 6" SOLID WHITE LINE PER USD No. 244.9 (THERMO PLASTIC)
- 23 INSTALL 20-FT PREFORMED PANELS WITH INTEGRAL ARROW/BIKE SYMBOLS FOLLOWED BY SOLID GREEN PANELS, LEGEND PER MUTCD
- 24 INSTALL W11-2 AND W16-9P SIGN PER CCAUSD No. 249.1 OR MOUNT ON STREET LIGHT POLE, SEE PLANS
- 25 INSTALL R3-17 MOD SIGN PER CCAUSD No. 249.1 OR MOUNT ON STREET LIGHT POLE, SEE PLANS
- 26 INSTALL SKIP LINE PER USD. 244.9 (POLYUREA)
- 27 INSTALL "NO PARKING SYMBOL COMM PARKING" SIGN PER CCAUSD No. 249.1 OR MOUNT ON STREET LIGHT POLE, SEE PLANS
- 28 INSTALL "NO PARKING COMM PARKING ONLY" SIGN PER CCAUSD No. 249.1 OR MOUNT ON STREET LIGHT POLE, SEE PLANS
- 29 INSTALL R3-17 SIGN PER CCAUSD No. 249.1 OR MOUNT ON STREET LIGHT POLE, SEE PLANS
- 30 INSTALL PERFORMED THERMOPLASTIC GREEN BIKE LANE
- 31 INSTALL 12" SOLID WHITE LINE (THERMO PLASTIC)
- 32 INSTALL R3-17BP SIGN PER CCAUSD No. 249.1 OR MOUNT ON STREET LIGHT POLE, SEE PLANS

NOTES:

1. ALL STREETLIGHT EQUIPMENT REMOVED SHALL BE RETURNED TO CLV SERVICE YARD. CALL 229-3661, 24 HOURS BEFORE DELIVERY, TO SET UP TIME. CONTRACTOR MUST HAVE A MEANS TO UNLOAD EQUIPMENT. CONTRACTOR SHALL BE RESPONSIBLE FOR ALL DAMAGE INCURRED IN THIS PROCESS.
2. EXISTING STREETLIGHTS TO REMAIN IN OPERATION UNTIL NEW SYSTEMS ARE OPERATIONAL.
3. ALL UNDERGROUND CONDUIT INSTALLED SHALL HAVE RED, CONTINUOUS MARKING TAPE INSTALLED IN TRENCH 18" BELOW FINISH GRADE.
4. CONTRACTOR SHALL TAKE ALL PRECAUTIONARY MEASURES TO PROTECT EXISTING IMPROVEMENTS FROM DAMAGE. ALL IMPROVEMENTS DAMAGED BY CONTRACTOR'S OPERATIONS SHALL BE REPAIRED OR REPLACED TO THE SATISFACTION OF THE ENGINEER AT THE EXPENSE OF THE CONTRACTOR.
5. ALL PULL BOX COVERS SHALL BE BONDED PER USD NO 323
6. CONDUIT ROUTING AND PULL BOX LOCATIONS ARE SHOWN SCHEMATICALLY ON THE PLANS AND MAY VARY IN THE FIELD.
7. CONTRACTOR TO COORDINATE AND FIT PULL BOXES INTO SIDEWALK JOINTS.
8. CONTRACTOR TO VERIFY LOCATION OF ALL UNDERGROUND UTILITIES PRIOR TO TRENCHING.
9. REMOVED SIGNS SHALL BE SALVAGED BY THE CONTRACTOR AND DELIVERED TO THE CITY OF LAS VEGAS EAST SERVICE YARD AT 3104 EAST BONANZA RD, CALL (702) 229-3361, 24 HOURS BEFORE DELIVERY TO SET UP TIME. CONTRACTOR MUST HAVE A MEANS TO UNLOAD EQUIPMENT AND SHALL BE RESPONSIBLE FOR ALL DAMAGES INCURRED IN THIS PROCESS.

NOTE:

NO POLES, PLANTERS, TREES WITHIN 5-FT OF WATERLINES, LATERALS, METERS, VAULTS. NO WATERLINES UNDER CURB, GUTTER AND PAVERS.



DRAWN BY: 11/29/2012		DESIGNED BY: 11/29/2012		CHECKED BY: 11/29/2012		PROJECT NO: SCALE: 1"=20'	
DAM		RCB/DAM		RCH		7350	
NOVEMBER 2012		NOVEMBER 2012		NOVEMBER 2012		NOVEMBER 2012	
SHEET		SHEET		SHEET		SHEET	
SS4		SS4		SS4		SS4	
43 OF 83 SHEETS		43 OF 83 SHEETS		43 OF 83 SHEETS		43 OF 83 SHEETS	
DRAWING NO. 107V6664-1ST		DRAWING NO. 107V6664-1ST		DRAWING NO. 107V6664-1ST		DRAWING NO. 107V6664-1ST	

PUBLIC WORKS DEPARTMENT
 333 N. RANCHO DRIVE
 LAS VEGAS, NEVADA 89106
 702-229-6272

PAVEMENT MARKING AND SIGNAGE PLAN
 STA 33+00.00 TO STA 40+00.00

DOWNTOWN PEDESTRIAN & BICYCLE IMPROVEMENTS
 1ST STREET
 HOOVER AVENUE TO BRIDGER AVENUE

FAST
 Call before you Dig
 1-702-432-5300

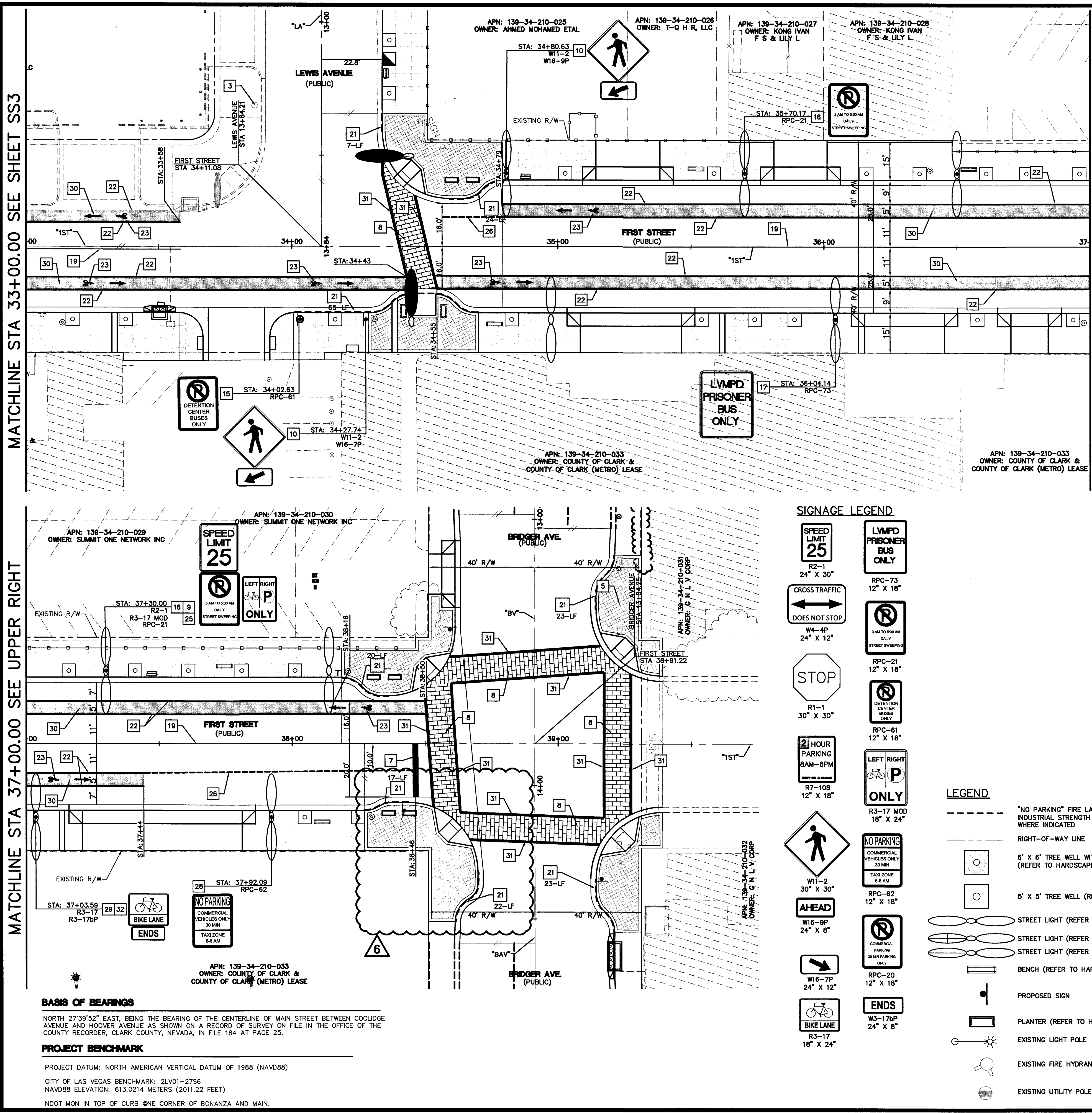
Call before you Dig
 1-702-227-2929

ROBERT HOSEA INC.
 CIVIL
 No. 1011
 EXP. 06/06/13
 5-16-13

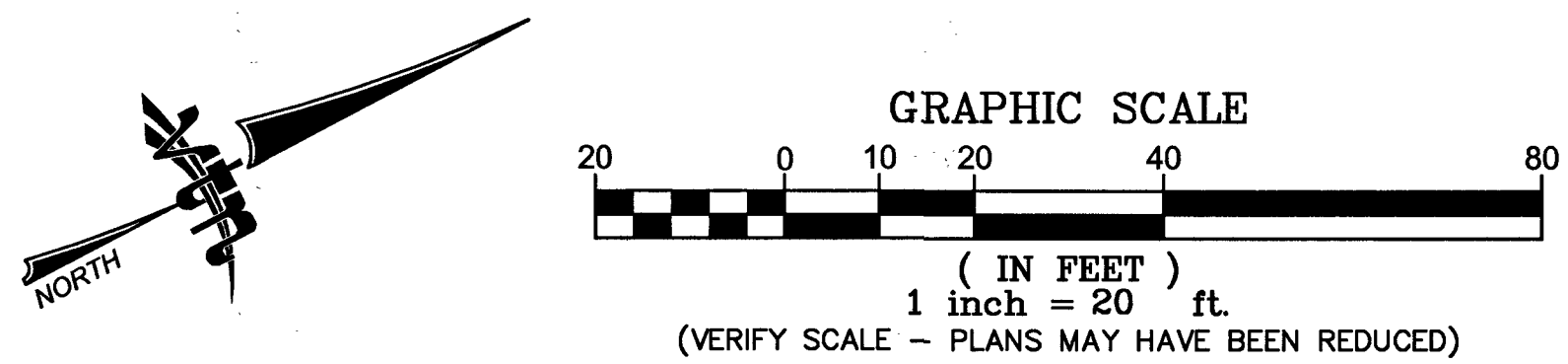
H#38974

MATCHLINE STA 33+00.00 SEE SHEET SS3

MATCHLINE STA 37+00.00 SEE UPPER RIGHT



MATCHLINE STA 37+00.00 SEE BELOW LEFT



TRAFFIC STRIPING & SIGNAGE LEGEND

- 1 EXISTING "STREET NAME" SIGN (D3-1), "STOP" SIGN (R1-1) AND "CROSS TRAFFIC DOES NOT STOP" SIGN (W4-4P) TO REMAIN
- 2 EXISTING R7-108 "2 HOUR PARKING" SIGN TO REMAIN
- 3 EXISTING R1-1 "STOP" SIGN TO REMAIN
- 4 EXISTING "NO PARKING" SIGN TO REMAIN
- 5 EXISTING STREETLIGHT TO REMAIN
- 6 EXISTING R2-1 "SPEED LIMIT 25" SIGN TO REMAIN
- 7 INSTALL 24" SOLID WHITE STOP BAR PER CCAUSD No. 254 (THERMO PLASTIC)
- 8 INSTALL FLINT DECORATIVE CROSSWALK MATERIAL (RUNNING BOND PATTERN WITH TP36 BORDER, BRICK RED COLOR). REFER TO CCAUSD No. 254.151 FOR GEOMETRY.
- 9 INSTALL R2-1 "SPEED LIMIT 25" SIGN PER CCAUSD No. 249.1 OR MOUNT ON STREET LIGHT POLE, SEE PLANS
- 10 INSTALL W1-2 AND W16-7P SIGN WITH FLUORESCENT YELLOW-GREEN BACKGROUND PER CCAUSD No. 249.1 OR MOUNT ON STREET LIGHT POLE, SEE PLANS
- 11 INSTALL R7-108 "2 HOUR PARKING" SIGN PER CCAUSD No. 249.1 OR MOUNT ON STREET LIGHT POLE, SEE PLANS
- 12 INSTALL "STREET NAME" SIGN (D3-1) & "STOP" SIGN (R1-1) PER CCAUSD No. 249.1 OR MOUNT ON STREET LIGHT POLE, SEE PLANS
- 13 INSTALL YIELD LINE PER MUTCD 3B-16 (THERMO PLASTIC)
- 14 INSTALL BLUE REFLECTIVE MARKER 8" FROM BACK OF CURB PER CLARK COUNTY FIRE DEPARTMENT STANDARDS
- 15 INSTALL "NO PARKING DETENTION CENTER BUSES ONLY" SIGN PER LEGEND AND PER CCAUSD No. 249.1 OR MOUNT ON STREET LIGHT POLE, SEE PLANS
- 16 INSTALL "NO PARKING 3AM TO 5:30AM DAILY STREET SWEEPING" SIGN PER LEGEND AND CCAUSD No. 249.1 OR MOUNT ON STREET LIGHT POLE, SEE PLANS
- 17 INSTALL "LVMPD PRISONER BUSES ONLY" SIGN PER LEGEND AND CCAUSD No. 249.1 OR MOUNT ON STREET LIGHT POLE, SEE PLANS
- 18 INSTALL "NO PARKING COMMERCIAL VEHICLES ONLY" SIGN PER LEGEND AND CCAUSD No. 249.1 OR MOUNT ON STREET LIGHT POLE, SEE PLANS
- 19 INSTALL TYPE 1 CENTERLINE PER USD No. 244 (POLYUREA)
- 20 INSTALL "CROSS TRAFFIC DOES NOT STOP" SIGN (W4-4P) PER CCAUSD No. 249.1 OR MOUNT ON STREET LIGHT POLE, SEE PLANS
- 21 INSTALL "NO PARKING" FIRE LANE BY PAINTING CURBS WITH RED LATEX PAINT
- 22 INSTALL 6" SOLID WHITE LINE PER USD No. 244.9 (THERMO PLASTIC)
- 23 INSTALL 20'-FT PREFORMED PANELS WITH INTEGRAL ARROW/BIKE SYMBOLS FOLLOWED BY SOLID GREEN PANELS, LEGEND PER MUTCD
- 24 INSTALL W1-2 AND W16-9P SIGN PER CCAUSD No. 249.1 OR MOUNT ON STREET LIGHT POLE, SEE PLANS
- 25 INSTALL R3-17 MOD SIGN PER CCAUSD No. 249.1 OR MOUNT ON STREET LIGHT POLE, SEE PLANS
- 26 INSTALL SKIP LINE PER USD. 244.9 (POLYUREA)
- 27 INSTALL "NO PARKING SYMBOL COMM PARKING" SIGN PER CCAUSD No. 249.1 OR MOUNT ON STREET LIGHT POLE, SEE PLANS
- 28 INSTALL "NO PARKING COMM PARKING ONLY" SIGN PER CCAUSD No. 249.1 OR MOUNT ON STREET LIGHT POLE, SEE PLANS
- 29 INSTALL R3-17 SIGN PER CCAUSD No. 249.1 OR MOUNT ON STREET LIGHT POLE, SEE PLANS
- 30 INSTALL PERFORMED THERMOPLASTIC GREEN BIKE LANE
- 31 INSTALL 12" SOLID WHITE LINE (THERMO PLASTIC)
- 32 INSTALL R3-17bP SIGN PER CCAUSD No. 249.1 OR MOUNT ON STREET LIGHT POLE, SEE PLANS

NOTES:

1. ALL STREETLIGHT EQUIPMENT REMOVED SHALL BE RETURNED TO CITY SERVICE YARD. CALL 229-3661, 24 HOURS BEFORE DELIVERY, TO SET UP TIME. CONTRACTOR MUST HAVE A MEANS TO UNLOAD EQUIPMENT. CONTRACTOR SHALL BE RESPONSIBLE FOR ALL DAMAGE INCURRED IN THIS PROCESS.
2. EXISTING STREETLIGHTS TO REMAIN IN OPERATION UNTIL NEW SYSTEMS ARE OPERATIONAL
3. ALL UNDERGROUND CONDUIT INSTALLED SHALL HAVE RED, CONTINUOUS MARKING TAPE INSTALLED IN TRENCH 18" BELOW FINISH GRADE.
4. CONTRACTOR SHALL TAKE ALL PRECAUTIONARY MEASURES TO PROTECT EXISTING IMPROVEMENTS FROM DAMAGE. ALL IMPROVEMENTS DAMAGED BY CONTRACTOR'S OPERATIONS SHALL BE REPAIRED OR REPLACED TO THE SATISFACTION OF THE ENGINEER AT THE EXPENSE OF THE CONTRACTOR.
5. ALL PULL BOX COVERS SHALL BE BONDED PER USD NO 323
6. CONDUIT ROUTING AND PULL BOX LOCATIONS ARE SHOWN SCHEMATICALLY ON THE PLANS AND MAY VARY IN THE FIELD.
7. CONTRACTOR TO COORDINATE AND FIT PULL BOXES INTO SIDEWALK JOINTS.
8. CONTRACTOR TO VERIFY LOCATION OF ALL UNDERGROUND UTILITIES PRIOR TO TRENCHING.
9. REMOVED SIGNS SHALL BE SALVAGED BY THE CONTRACTOR AND DELIVERED TO THE CITY OF LAS VEGAS EAST SERVICE YARD AT 3104 EAST BONANZA RD. CALL (702) 229-3361, 24 HOURS BEFORE DELIVERY TO SET UP TIME. CONTRACTOR MUST HAVE A MEANS TO UNLOAD EQUIPMENT AND SHALL BE RESPONSIBLE FOR ALL DAMAGES INCURRED IN THIS PROCESS.

NOTE:
NO POLES, PLANTERS, TREES WITHIN 5'-FT OF WATERLINES, LATERALS, METERS, VAULTS. NO WATERLINES UNDER CURB, GUTTER AND PAVERS.

SIGNAGE LEGEND

- R2-1
24" X 30"
- W4-4P
24" X 12"
- R1-1
30" X 30"
- R7-108
12" X 18"
- W16-9P
24" X 8"
- W16-7P
24" X 12"
- R3-17
18" X 24"
- RPC-73
12" X 18"
- RPC-21
12" X 18"
- RPC-61
12" X 18"
- RPC-62
12" X 18"
- RPC-20
12" X 18"
- W3-17bP
24" X 8"

LEGEND

- "NO PARKING" FIRE LANE. PAINT CURBS WITH INDUSTRIAL STRENGTH ENAMEL (SAFETY RED) WHERE INDICATED
- RIGHT-OF-WAY LINE
- 6' X 6' TREE WELL WITH GRATE (REFER TO HARDSCAPE PLANS)
- 5' X 5' TREE WELL (REFER TO HARDSCAPE PLANS)
- STREET LIGHT (REFER TO STREET LIGHTING PLANS)
- STREET LIGHT (REFER TO STREET LIGHTING PLANS)
- STREET LIGHT (REFER TO STREET LIGHTING PLANS)
- BENCH (REFER TO HARDSCAPE PLANS)
- PROPOSED SIGN
- PLANTER (REFER TO HARDSCAPE PLANS)
- EXISTING LIGHT POLE
- EXISTING FIRE HYDRANT
- EXISTING UTILITY POLE

BASIS OF BEARINGS
NORTH 27°39'52" EAST, BEING THE BEARING OF THE CENTERLINE OF MAIN STREET BETWEEN COULIDGE AVENUE AND HOOVER AVENUE AS SHOWN ON A RECORD OF SURVEY ON FILE IN THE OFFICE OF THE COUNTY RECORDER, CLARK COUNTY, NEVADA, IN FILE 184 AT PAGE 25.

PROJECT BENCHMARK
PROJECT DATUM: NORTH AMERICAN VERTICAL DATUM OF 1988 (NAVD88)
CITY OF LAS VEGAS BENCHMARK: 2LV01-2756
NAVD88 ELEVATION: 613.0214 METERS (2011.22 FEET)
NDOT MON IN TOP OF CURB ONE CORNER OF BONANZA AND MAIN.

FAST
Call before you Dig
1-702-432-5300
FREEMAN AND MATERIAL SYSTEM OF TRANSPORTATION

CALL BEFORE YOU DIG
1-702-227-2929

Call before you Dig
"Utility lines. It's 811."
Call 811

PUBLIC WORKS DEPARTMENT 333 N. RANCHO DRIVE LAS VEGAS, NV 89106 702-229-8272		2737 SOUTH RANBOW BOULEVARD LAS VEGAS, NEVADA 89148-3148 PH: (702) 875-7550 FAX: (702) 875-7550 WEB SITE: WWW.PW.DOT.NV.GOV	
PAVEMENT MARKING AND SIGNAGE PLAN STA 33+00.00 TO STA 40+00.00		DOWNTOWN PEDESTRIAN & BICYCLE IMPROVEMENTS 1ST STREET HOOVER AVENUE TO BRIDGER AVENUE	
DRAWN BY: DAM	DESIGNED BY: RST/DAM	CHECKED BY: RCH	PROJECT NO.: ZSD
DATE: 11/29/2012	DATE: 11/29/2012	DATE: 11/29/2012	SCALE: HORIZ. 1"=20' VERT. N/A
SHEET SS4		43 OF 83 SHEETS	
DRAWING NO. 107V664-1ST		REVISION	

11/29/2012 10:58 AM Staff/First Street/Pavement Marking and Signage Plan.dwg/ymf, Jan 29, 2014, 9:46 AM