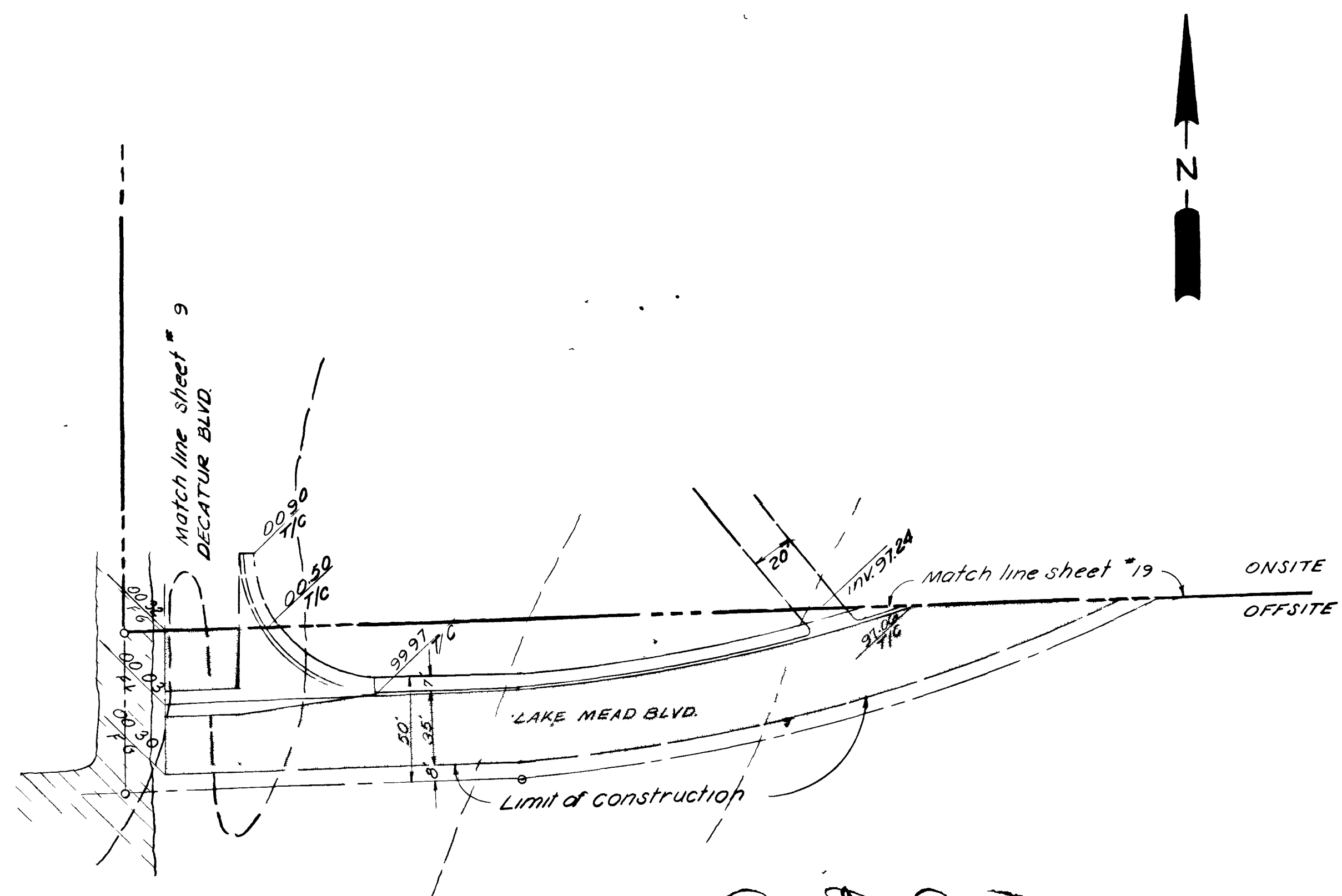


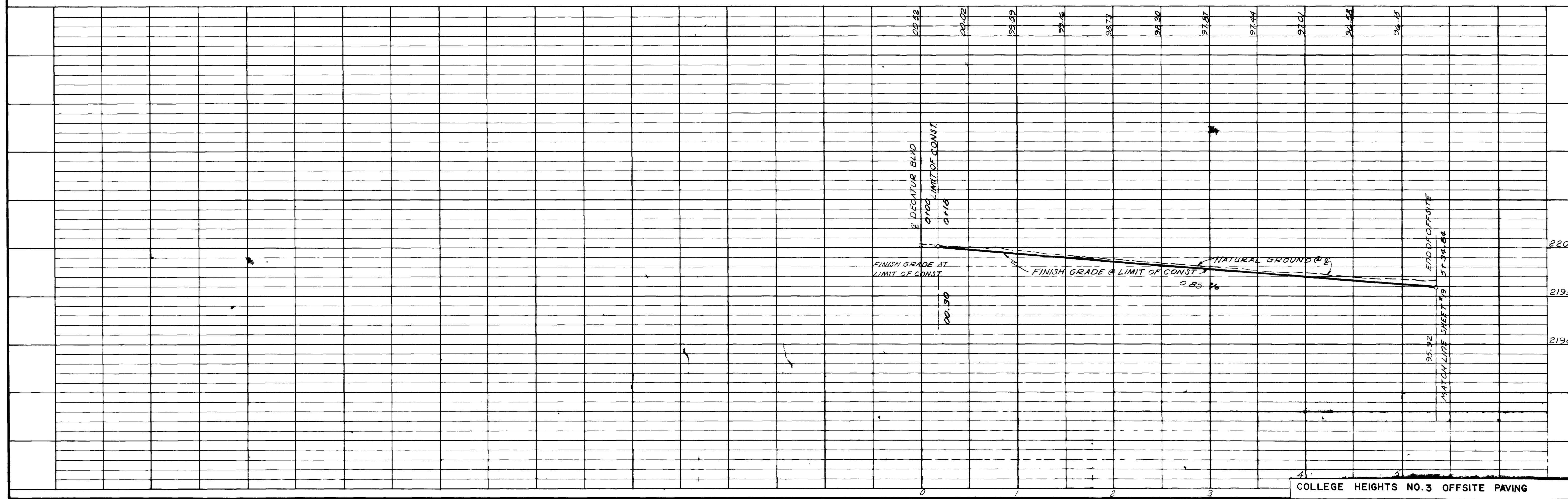
7



Submitted by [Signature] Date Aug 12, 1963  
Moote, Kempa & Galloway

Approved by [Signature] Date 4-17-64  
City Engineer  
R. R. Nicholson 4-17-64

LAKE MEAD BLVD.



COLLEGE HEIGHTS NO.3 OFFSITE  
PART OF THE 1/2 OF SECTION 19 T20S R1E  
CITY OF LAS VEGAS  
CLARK COUNTY, NEVADA

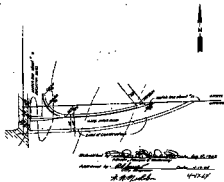
PAVING PLAN AND PROFILE  
MOOTE, KEMPA & GALLOWAY, INC.  
CIVIL ENGINEERS, LAND PLANNERS, LAND SURVEYORS  
LAS VEGAS - RENO - NEVADA

DATE	DRN.	CHK.	APPD.
8/1/63	DC	JV	KJM

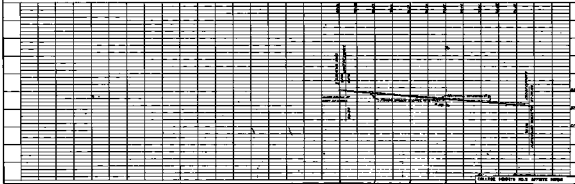
JOB NO.  
LV 1891

19A

COLLEGE HEIGHTS NO.3 OFFSITE PAVING



LAKE HEAD BLVD.



COL. E. C. ...  
 DRAWING NO. 3 ...  
 DATE ...  
 SCALE ...  
 SHEET ...  
 TOTAL SHEETS ...  
 19A