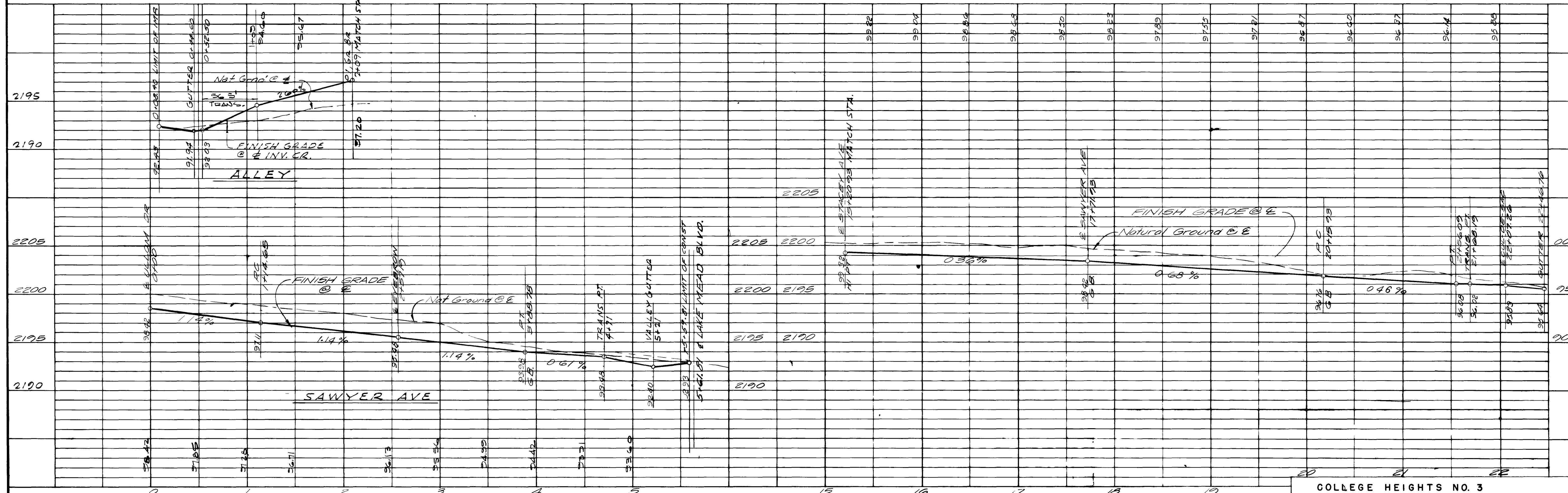


Submitted by [Signature] Date 5/10/63
 Moote, Kempa & Galloway

Approved by [Signature] Date 4-17-64
 City Engineer

Approved by [Signature] Date 4-17-64
 Field Engineer

BENCH MARK Spike in PP #29188 approx 300' N of W 1/4 corner on W side of Decatur Ave. ELEVATION 2203.81



COLLEGE HEIGHTS NO. 3

PART OF THE 1/2 OF SECTION 19, T20S, R10E, M38S, CLARK COUNTY, NEVADA

PREPARED FOR FIRST WESTERN SAVING & LOAN

PAVING PLAN AND PROFILE

MOOTE, KEMPA & GALLOWAY, INC.
 CIVIL ENGINEERS AND PLANNERS LAND NEVADA
 LAS VEGAS, NEVADA

REV	DESCRIPTION	SCALE	DATE	BY	CHKD	APPD
1	AS SHOWN	1"=30'				
2	REVISED	1"=30'				
3	REVISED	1"=30'				
4	REVISED	1"=30'				
5	REVISED	1"=30'				
6	REVISED	1"=30'				
7	REVISED	1"=30'				
8	REVISED	1"=30'				
9	REVISED	1"=30'				
10	REVISED	1"=30'				
11	REVISED	1"=30'				
12	REVISED	1"=30'				
13	REVISED	1"=30'				
14	REVISED	1"=30'				
15	REVISED	1"=30'				
16	REVISED	1"=30'				
17	REVISED	1"=30'				
18	REVISED	1"=30'				
19	REVISED	1"=30'				
20	REVISED	1"=30'				
21	REVISED	1"=30'				
22	REVISED	1"=30'				
23	REVISED	1"=30'				
24	REVISED	1"=30'				
25	REVISED	1"=30'				
26	REVISED	1"=30'				
27	REVISED	1"=30'				
28	REVISED	1"=30'				
29	REVISED	1"=30'				
30	REVISED	1"=30'				
31	REVISED	1"=30'				
32	REVISED	1"=30'				
33	REVISED	1"=30'				
34	REVISED	1"=30'				
35	REVISED	1"=30'				
36	REVISED	1"=30'				
37	REVISED	1"=30'				
38	REVISED	1"=30'				
39	REVISED	1"=30'				
40	REVISED	1"=30'				

COLLEGE HEIGHTS NO. 3

