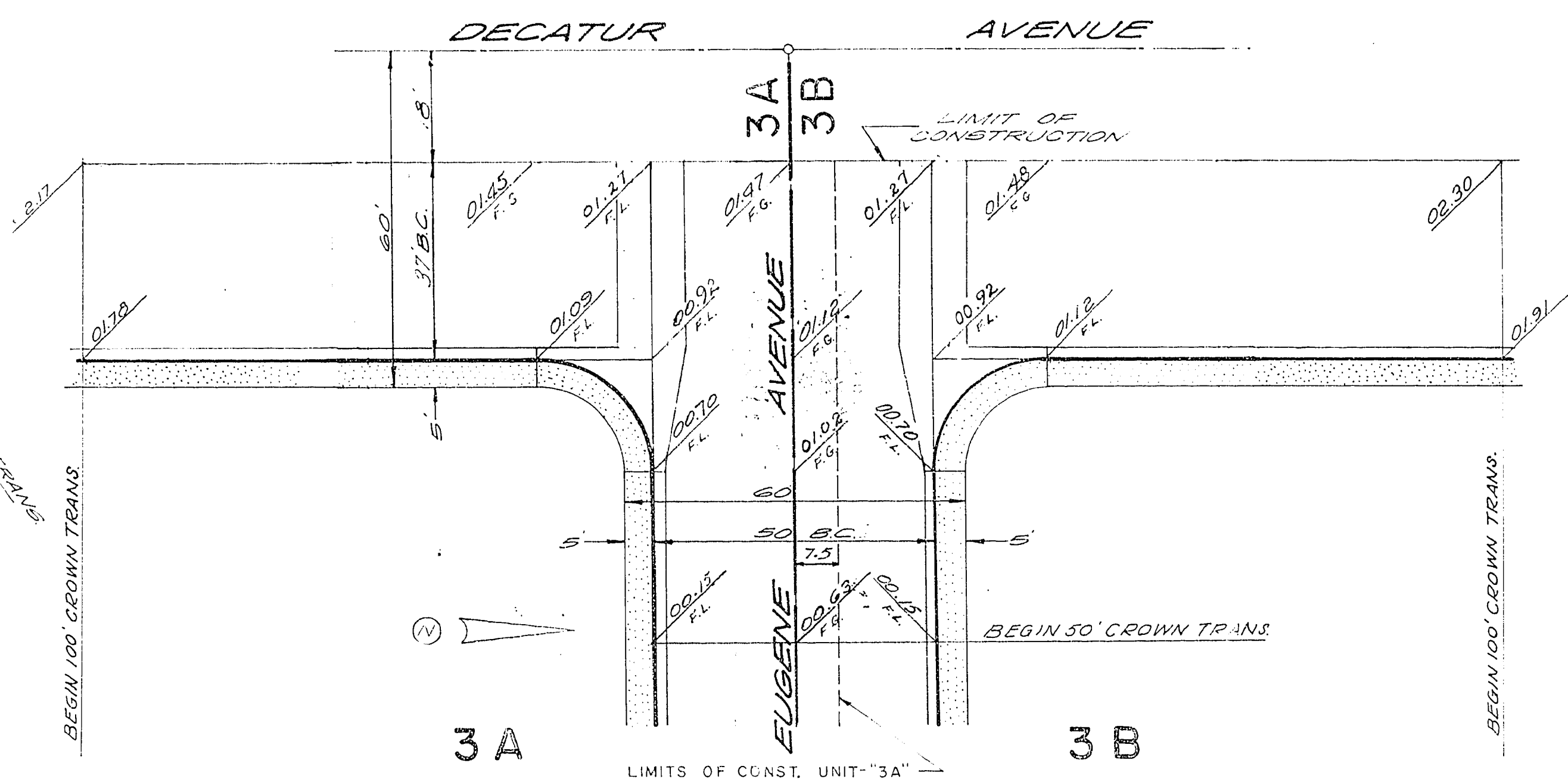


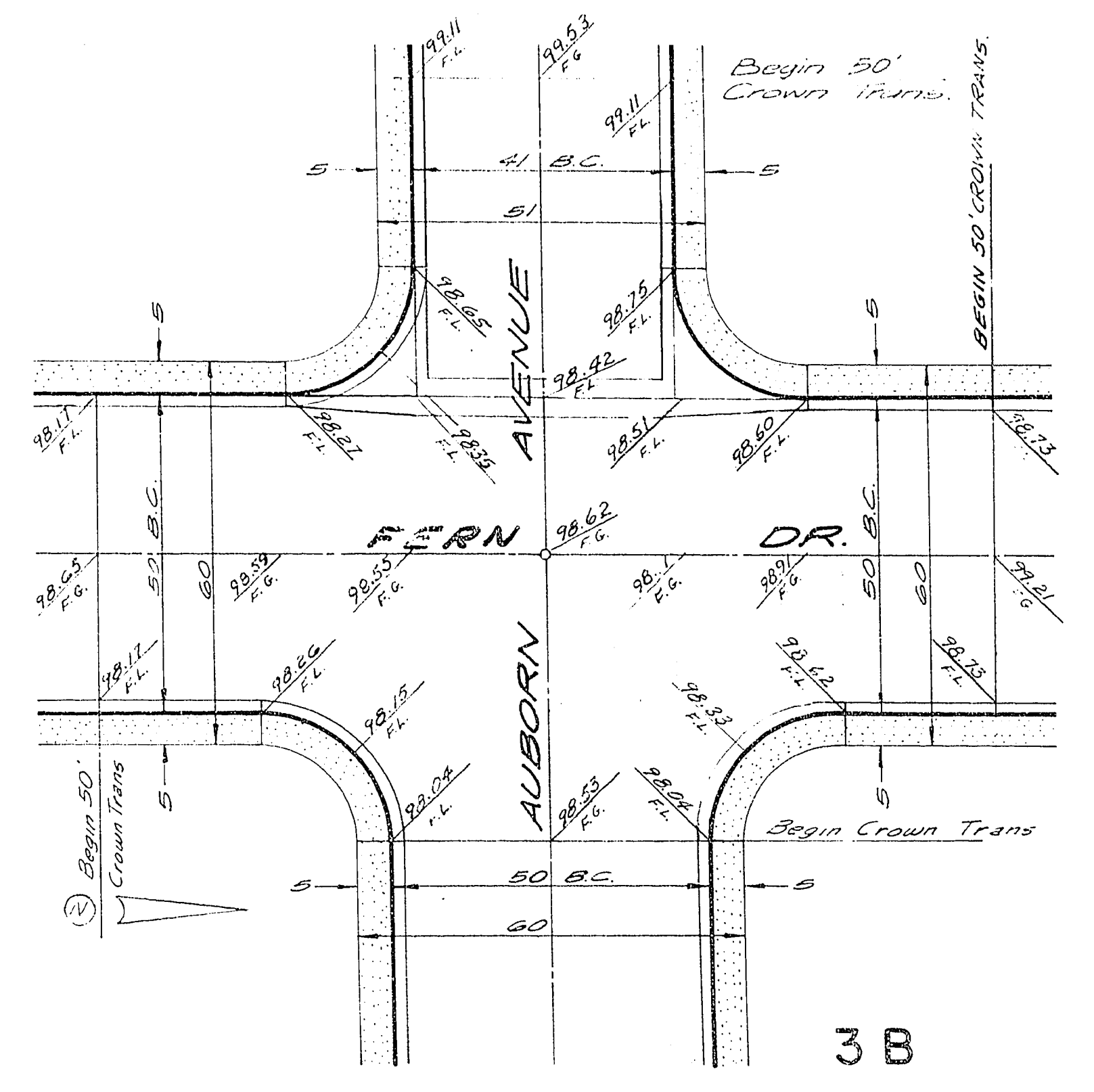
3A



3A

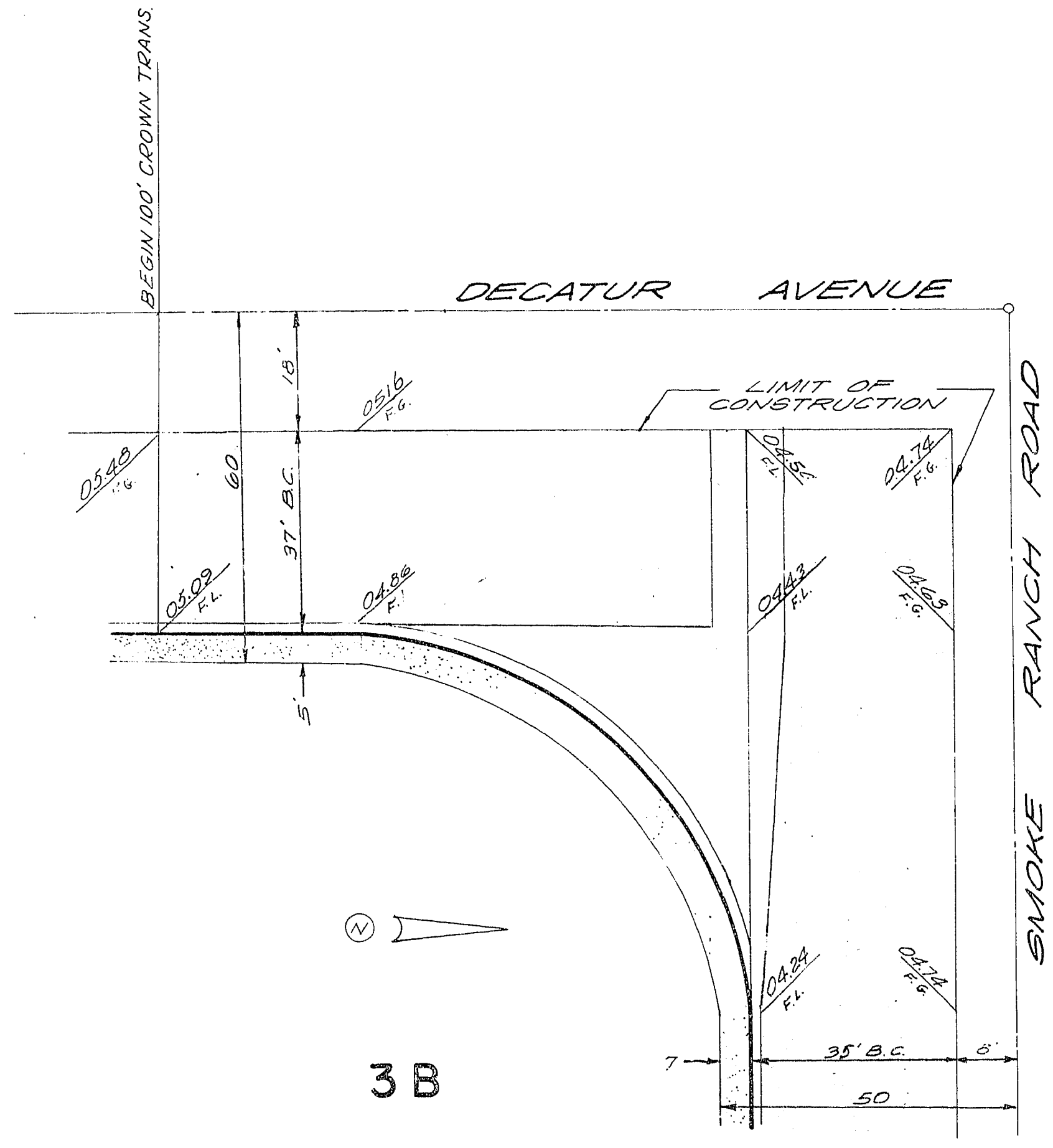
LIMITS OF CONST. UNIT "3A"

3B

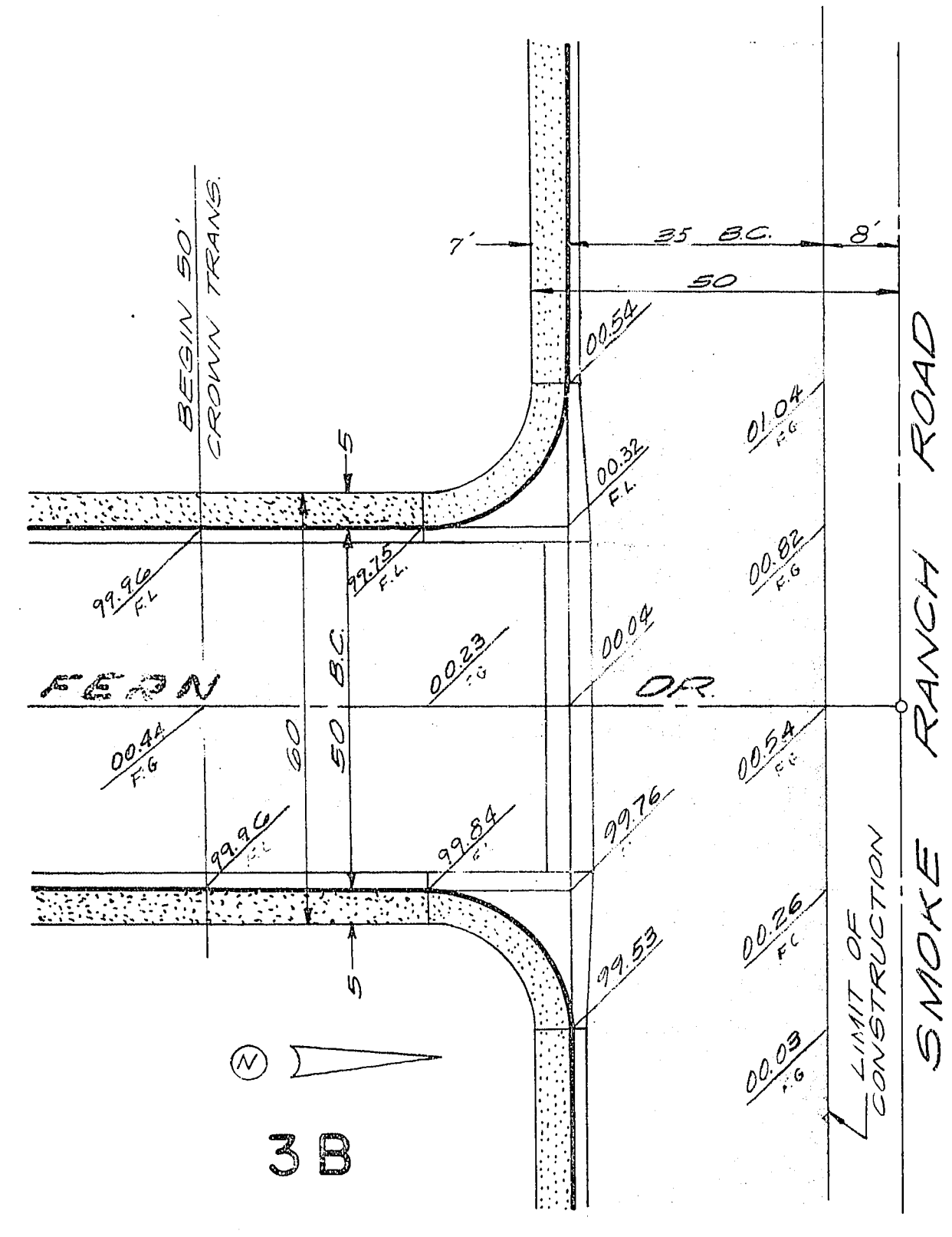


3B

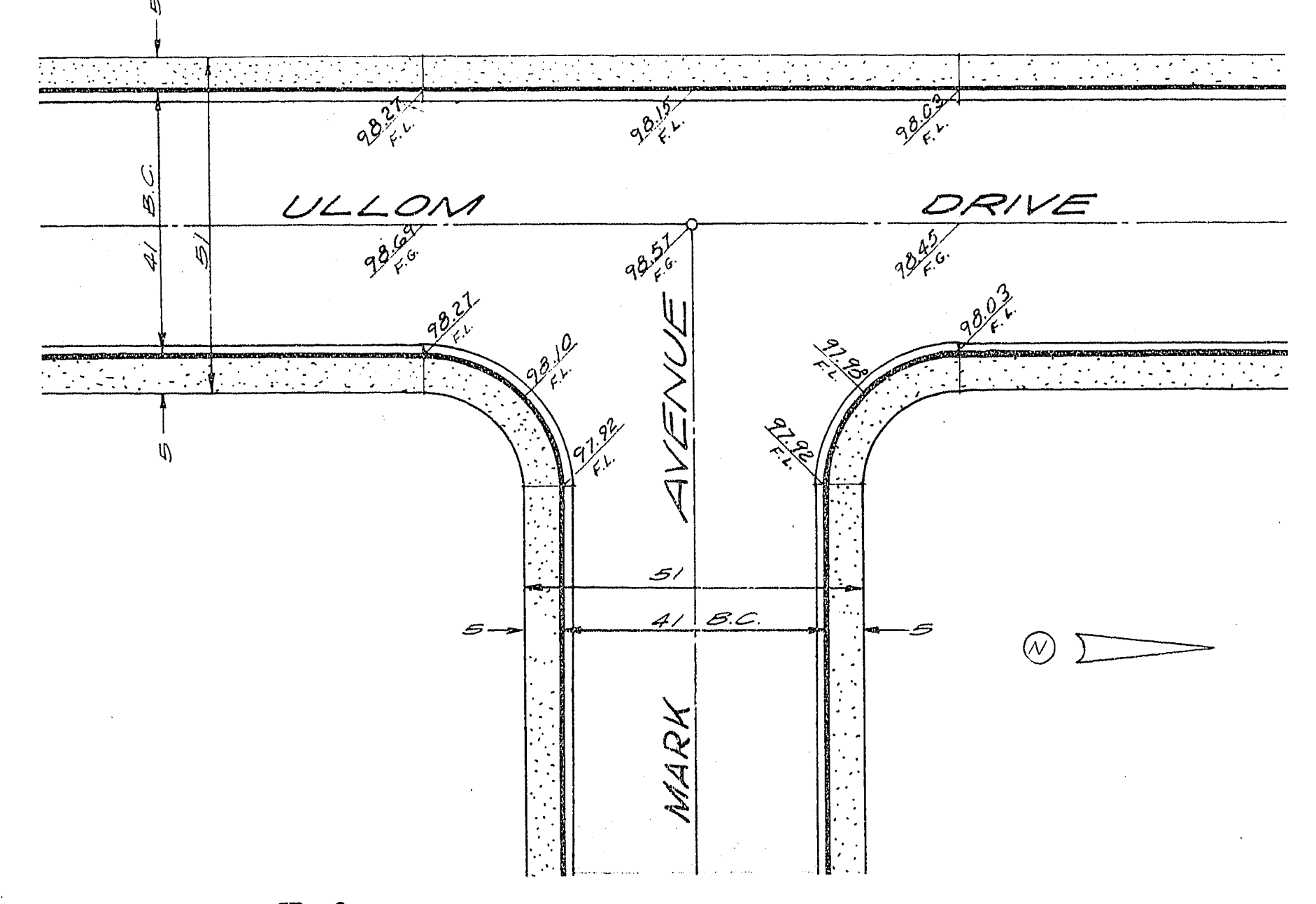
Scale of all details 1"=20'
See Note 3 Sheet 6.



3B



3B



3A

BENCH MARK Spike in power pole #29100 approx. 800' N. of W 1/4 corner on West side of Decatur Ave. EL. 2203.81

Approved by: _____ Date: _____
Field Engineer

SUBMITTED BY: _____ DATE 5/10/63
MOOTE, KEMPA & GALLOWAY
APPROVED BY: _____ DATE 4/17/64
CITY ENGINEER

INTERSECTION DETAILS			
DATE	5-3-63	MOOTE, KEMPA & GALLOWAY, INC.	
DRAWN	HN	CIVIL ENGINEERS AND LAND SURVEYORS	
CHD.	51'	PHOENIX LAS VEGAS	
SCALE	1"=20'	SHEET	8 OF 40
CLIENT	FIRST WESTERN SAVINGS & LOAN ASSN.	FILE	LV1391A
REVISIONS			