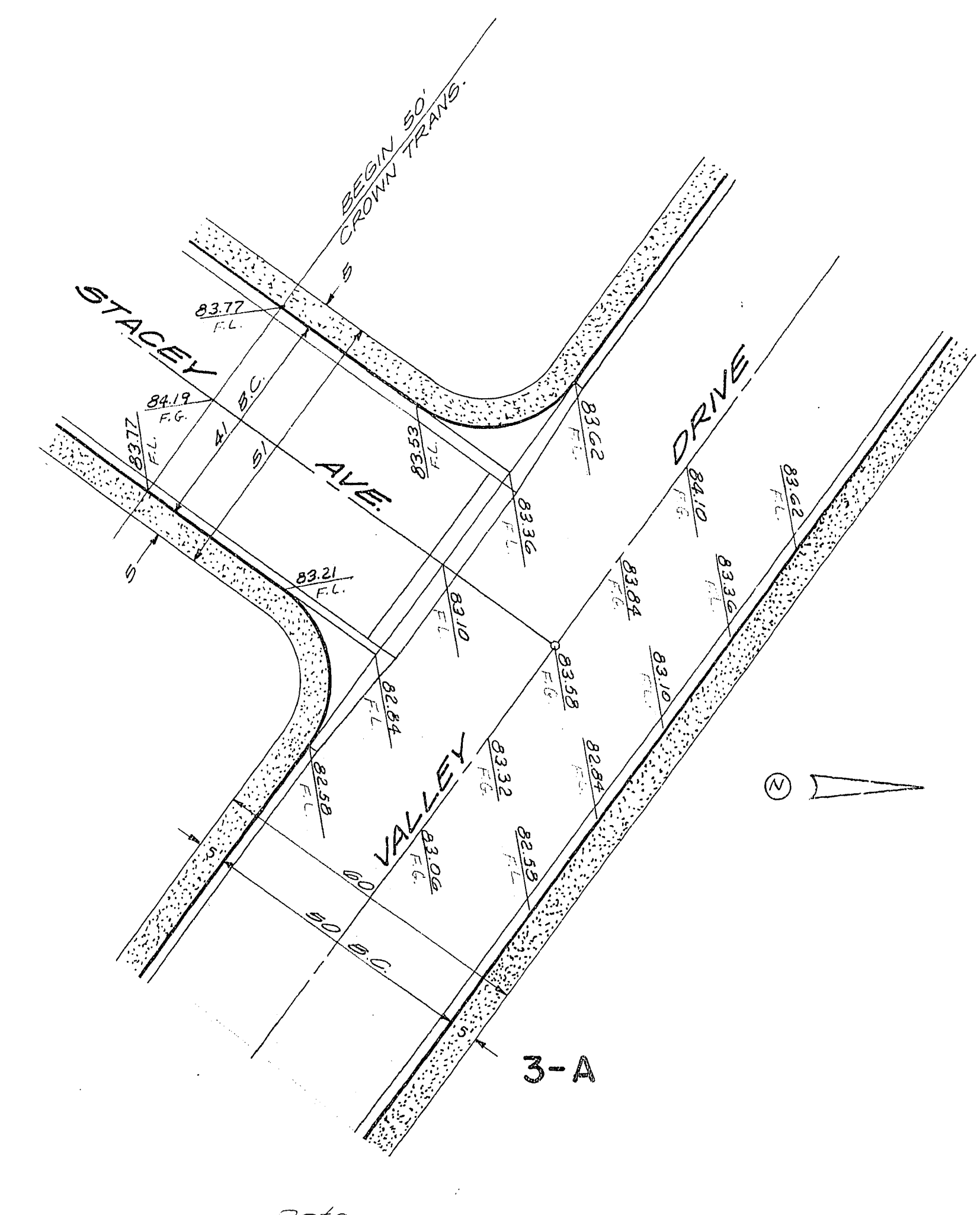
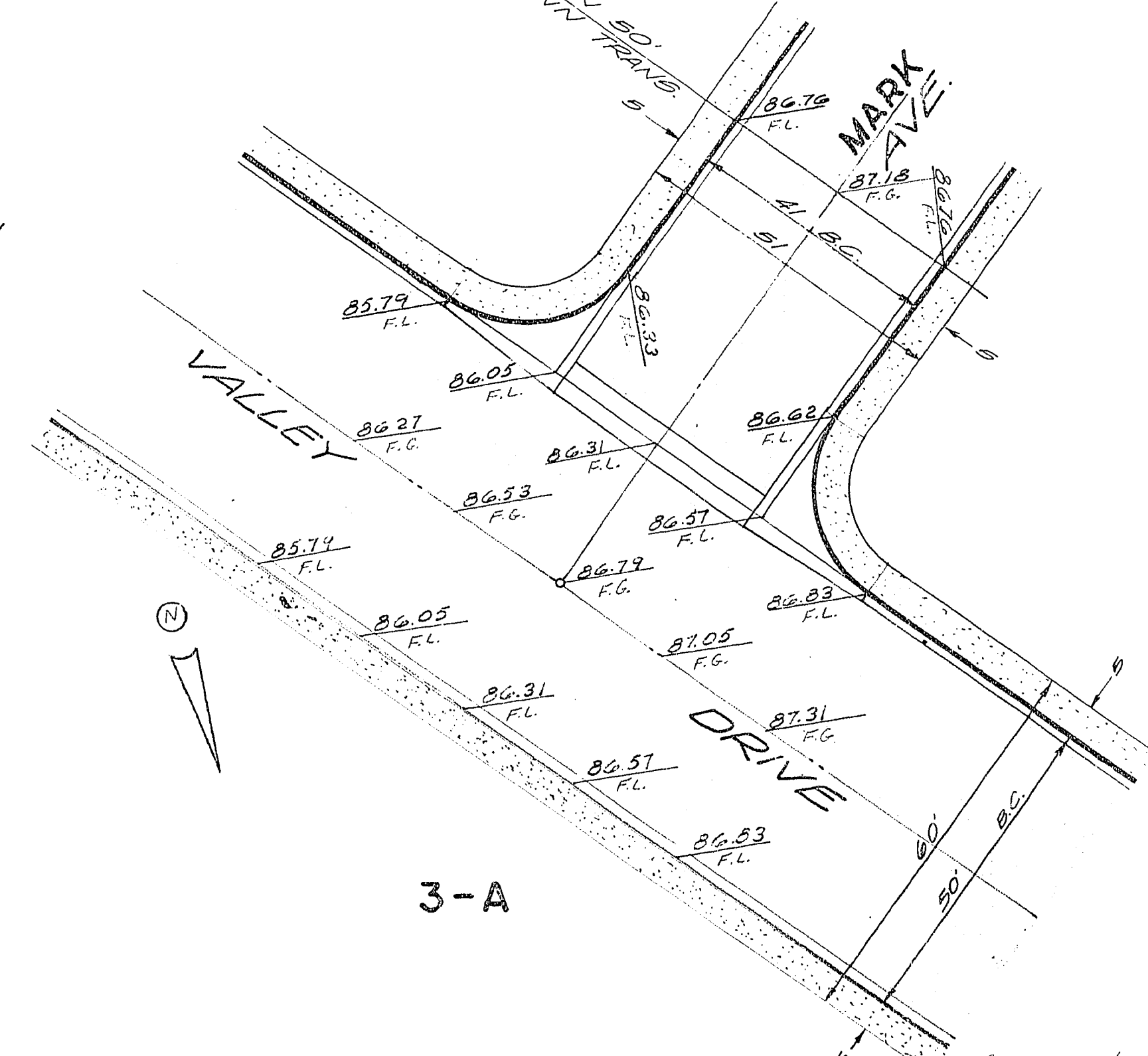
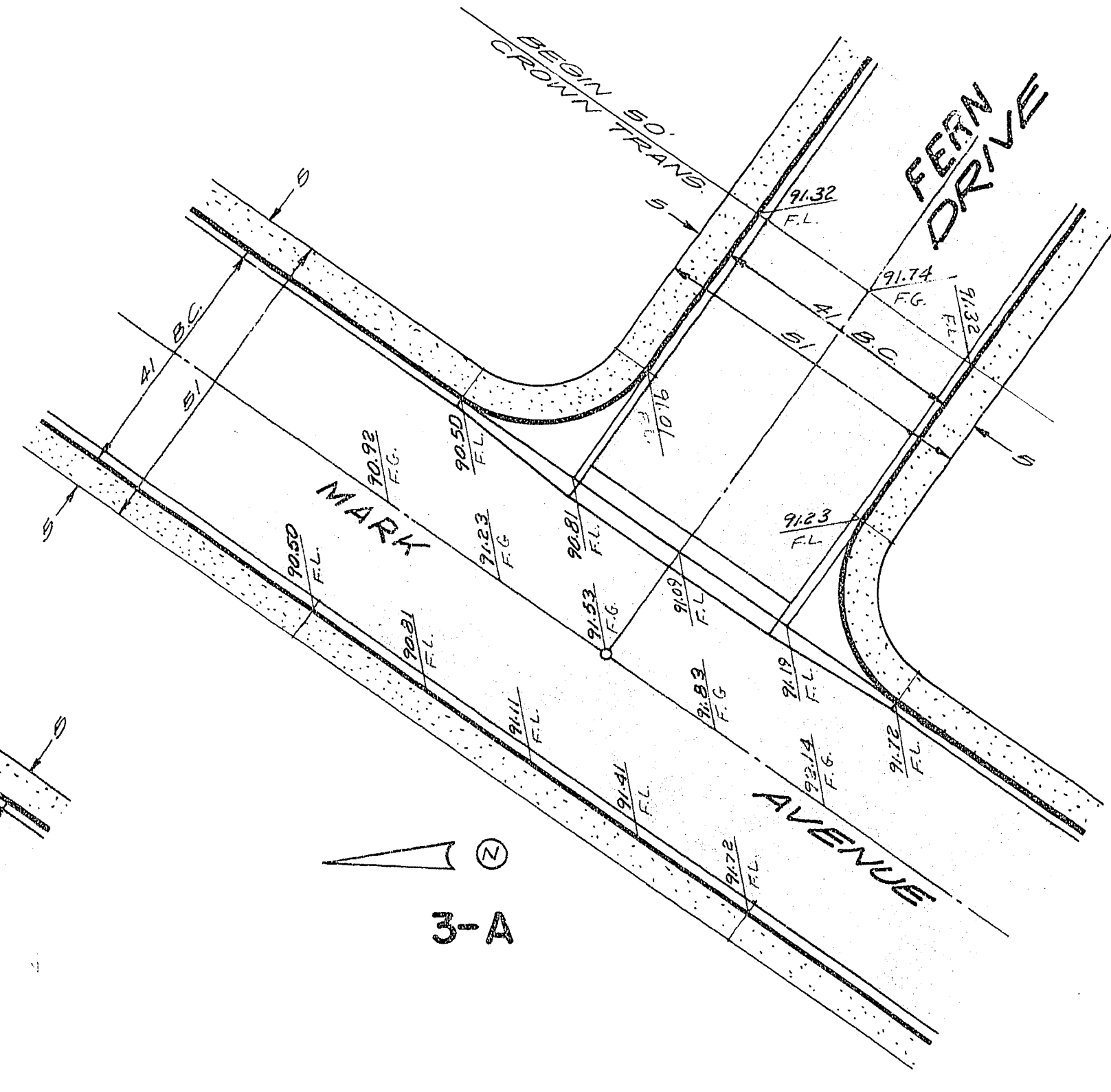
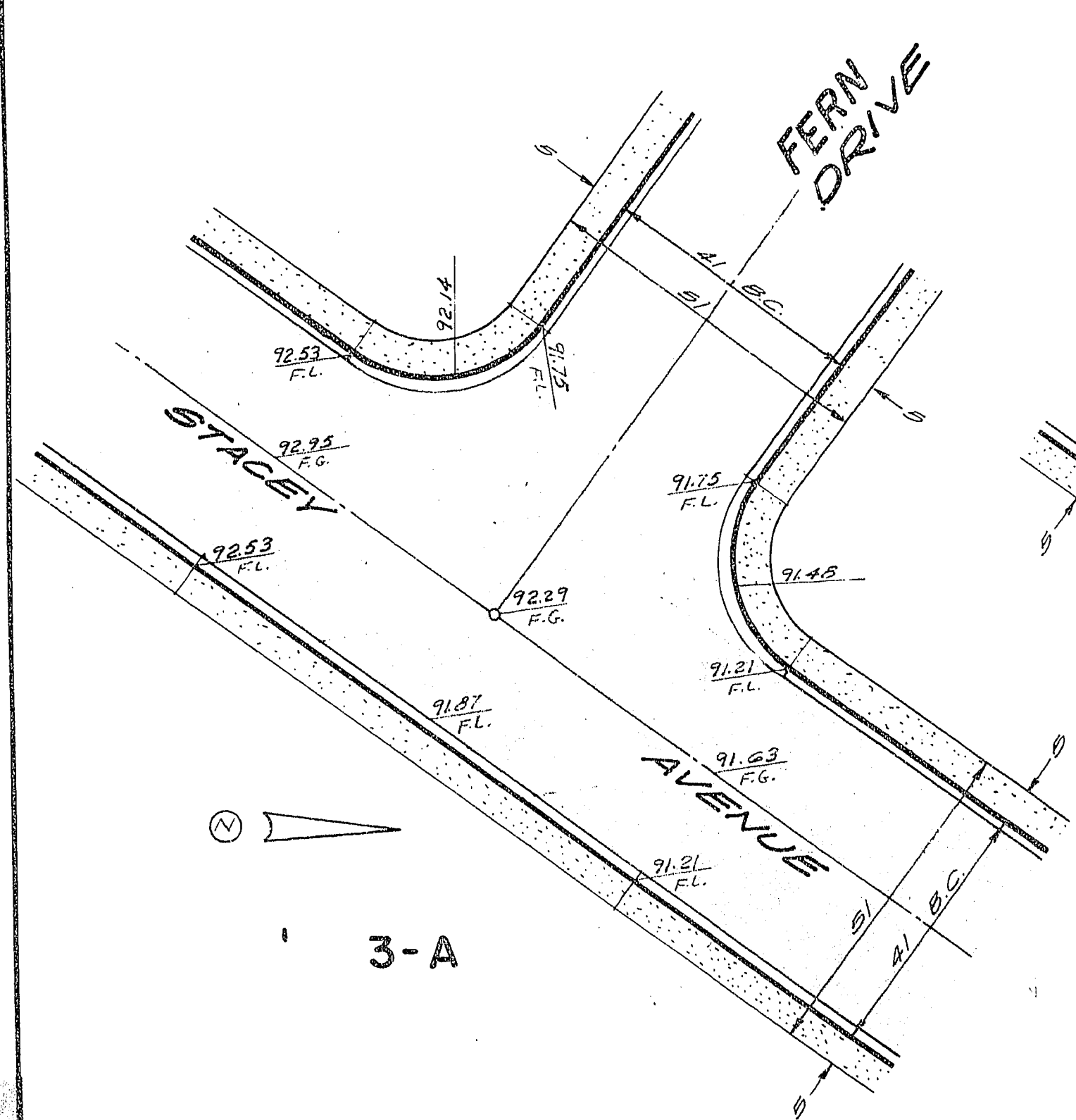


Scale of all details 1"=20'
See Note 3 Sheet 6.



BENCH MARK Spike in power pole # 29188 approx 800' N. of W 1/4 corner on West side of Decatur Ave. EL. 2203.81

SUBMITTED BY: *[Signature]* DATE 5/10/63
MOOTE, KEMPA & GALLOWAY
APPROVED BY: *[Signature]* DATE 4-17-64
CITY ENGINEER

INTERSECTION DETAILS		DATE	5-10-63	MOOTE, KEMPA & GALLOWAY, INC. CIVIL ENGINEERS AND LAND SURVEYORS
Rev. per City	7-29	DRAWN	HN	
Rev. grades	11-9-63	CHKD.	ST	PHOENIX LAS VEGAS
CLIENT: FIRST WESTERN SAVINGS & LOAN ASSN.		SCALE	1"=20'	SHEET 7 of 40
REVISED		FILE		JOB NO. LV13214