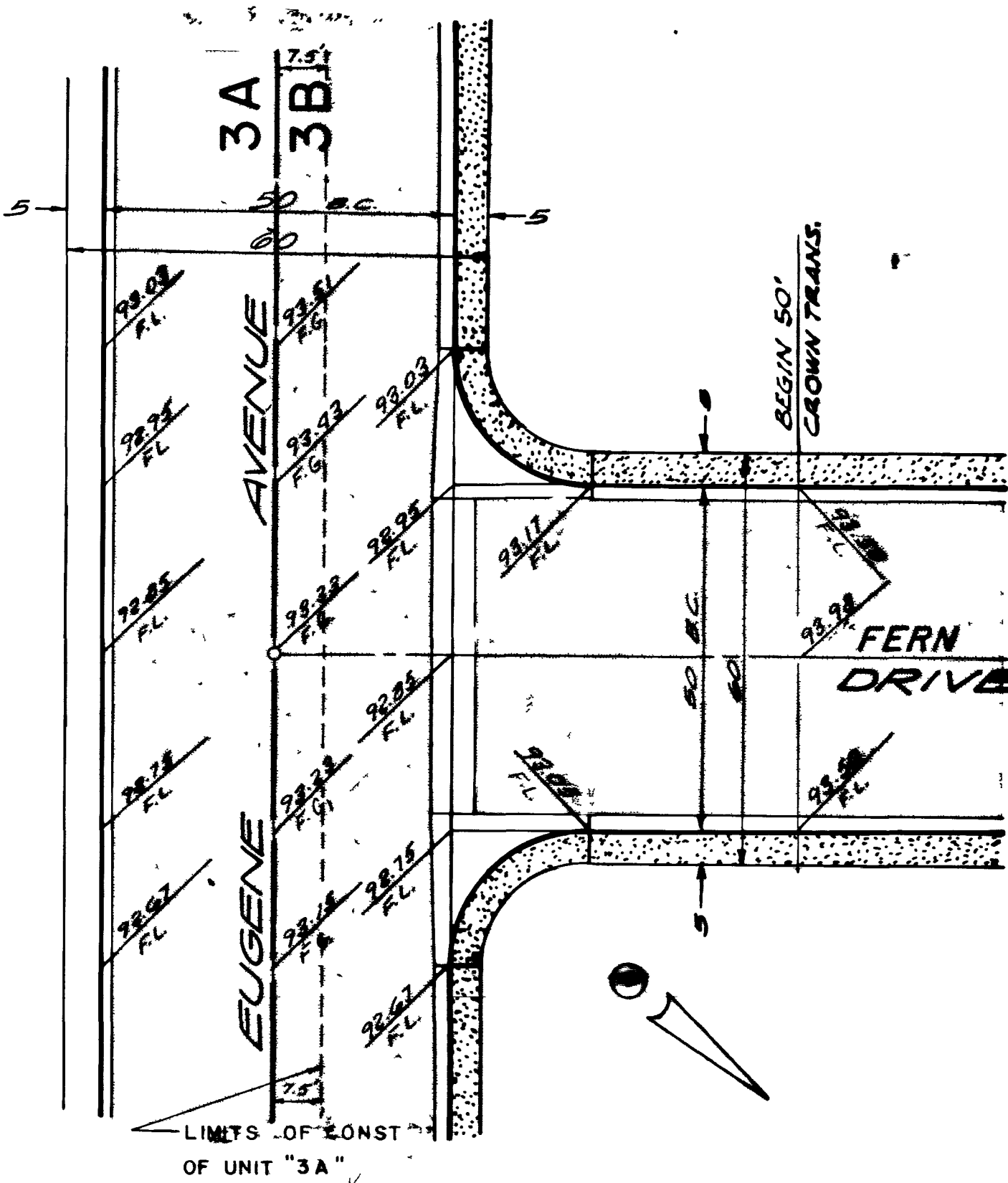
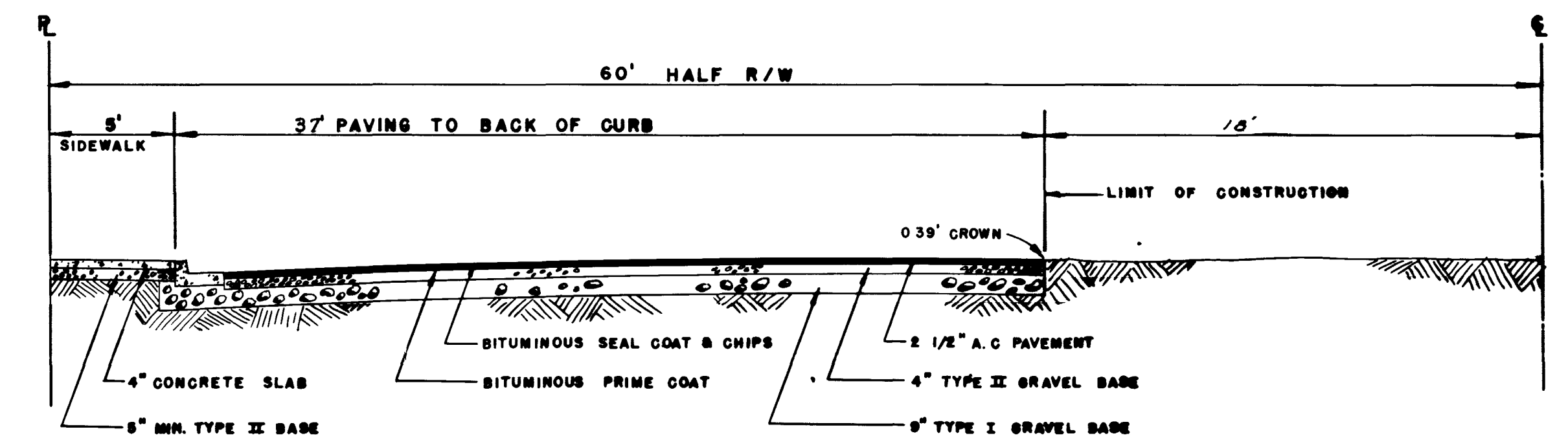
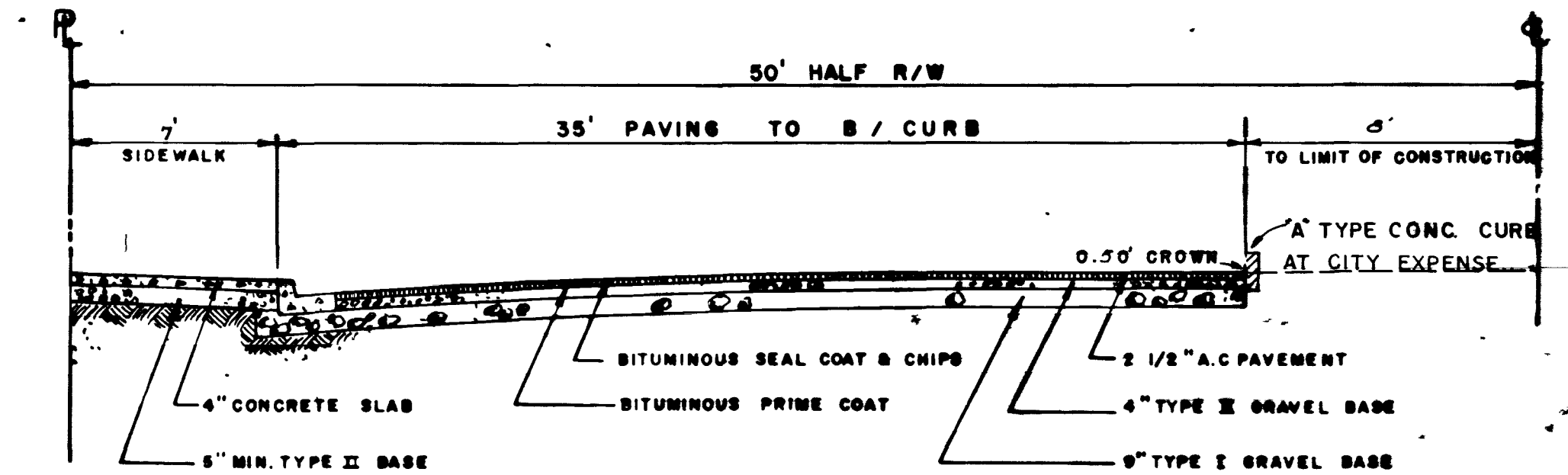
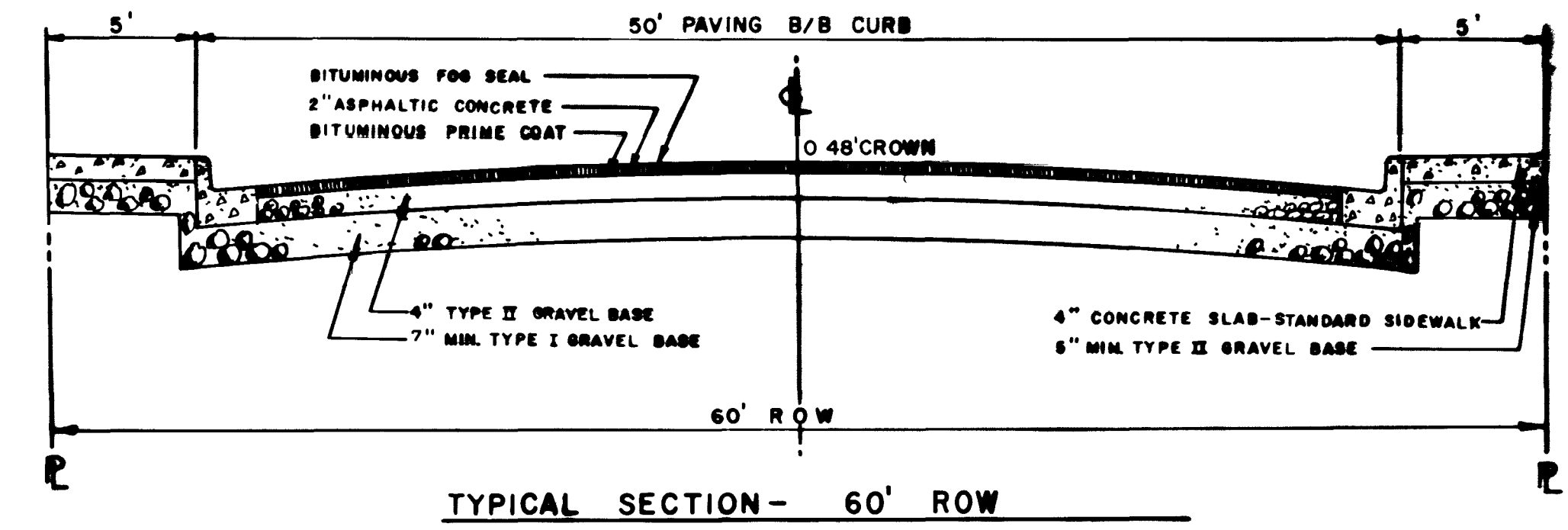
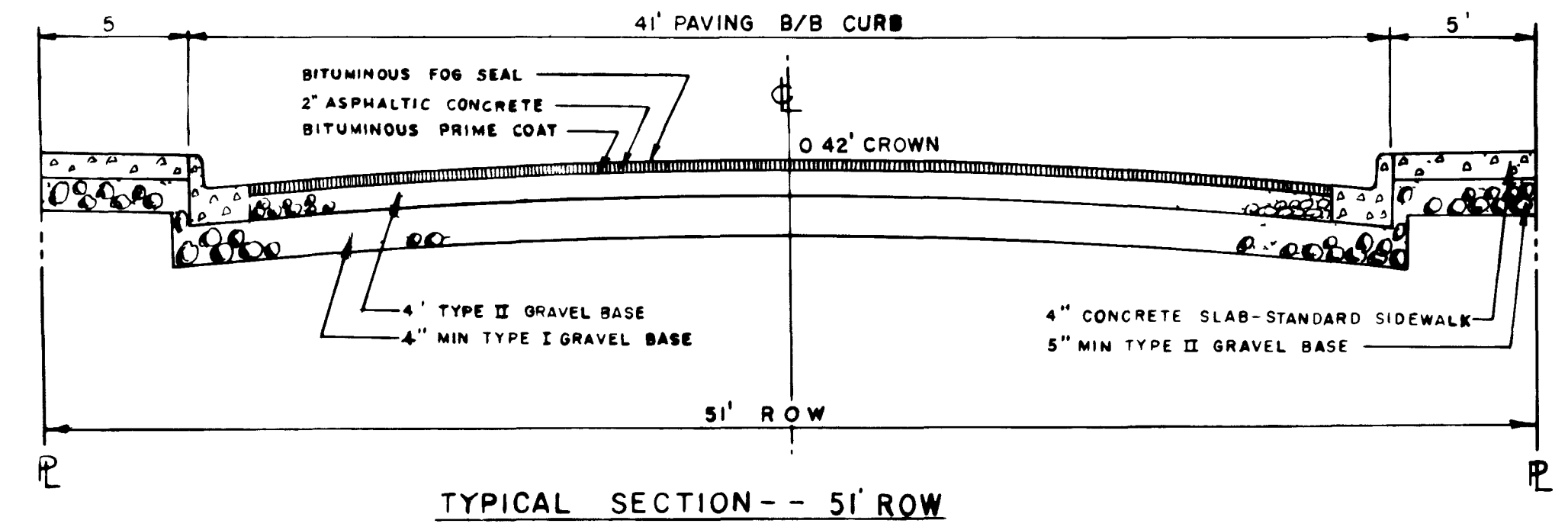
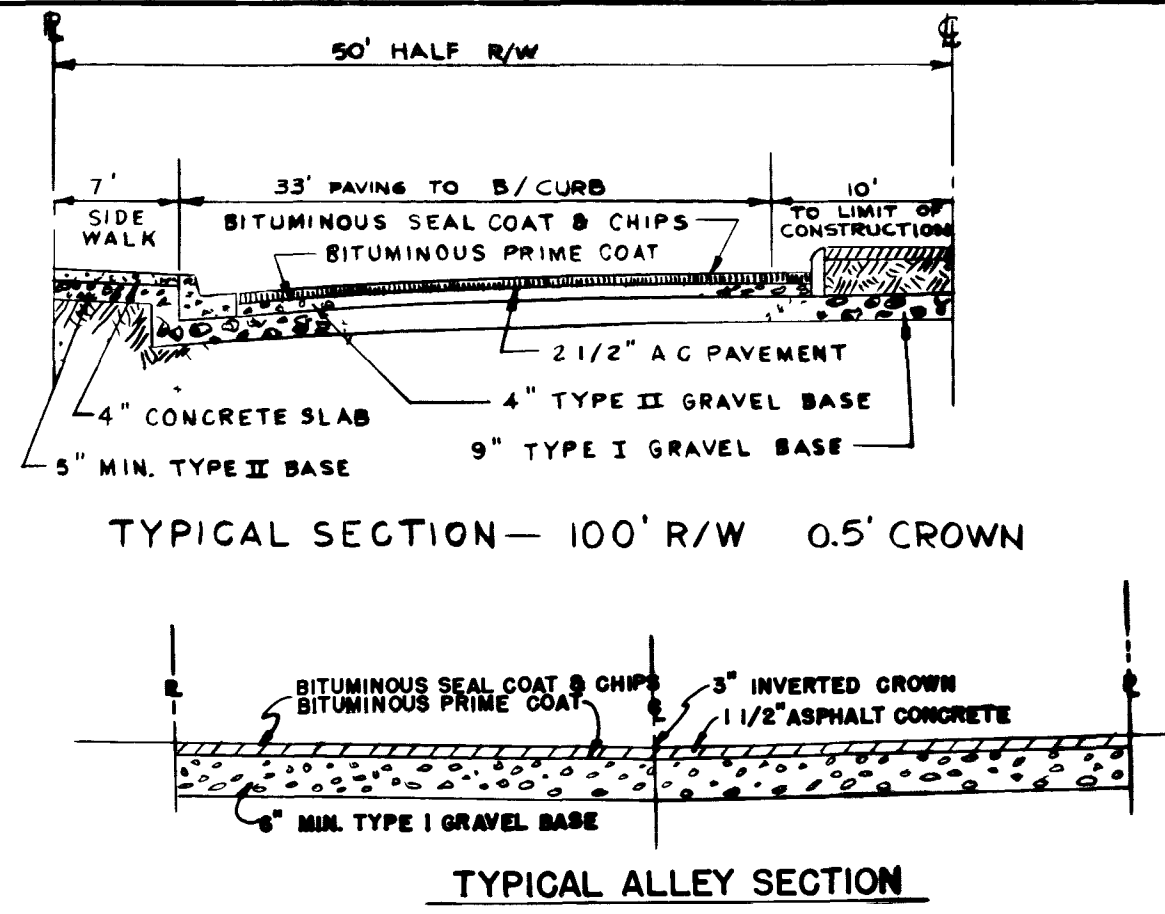
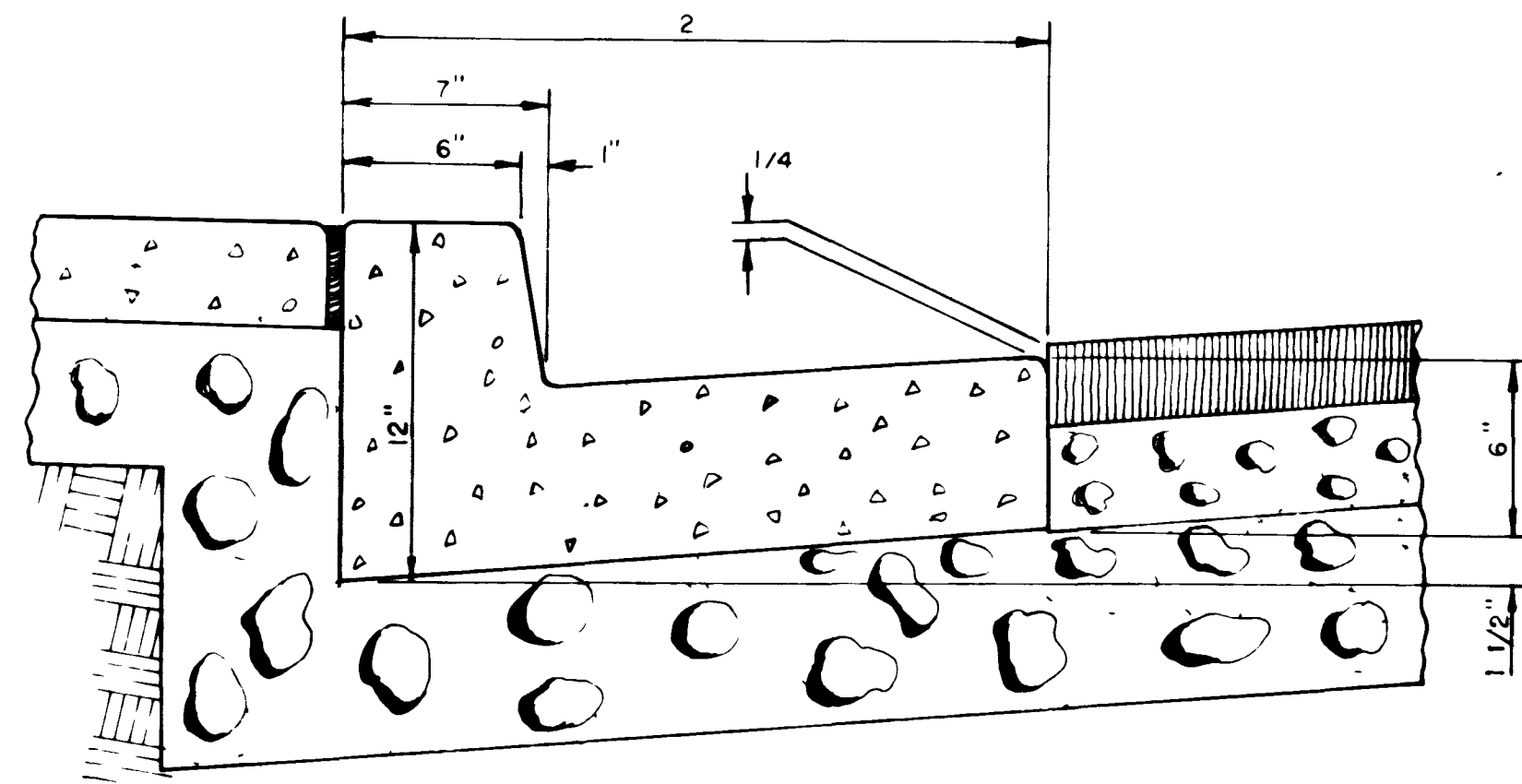
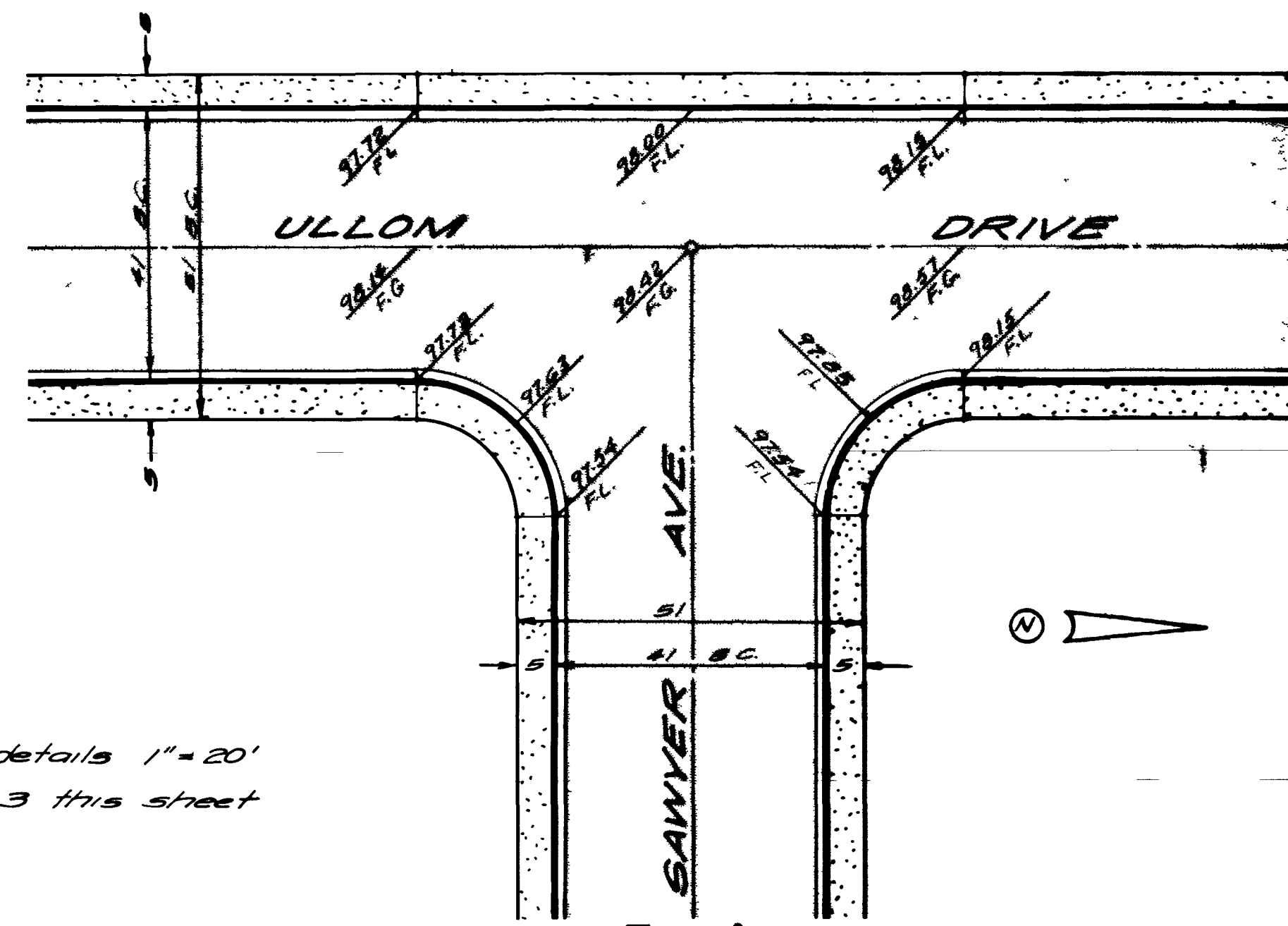


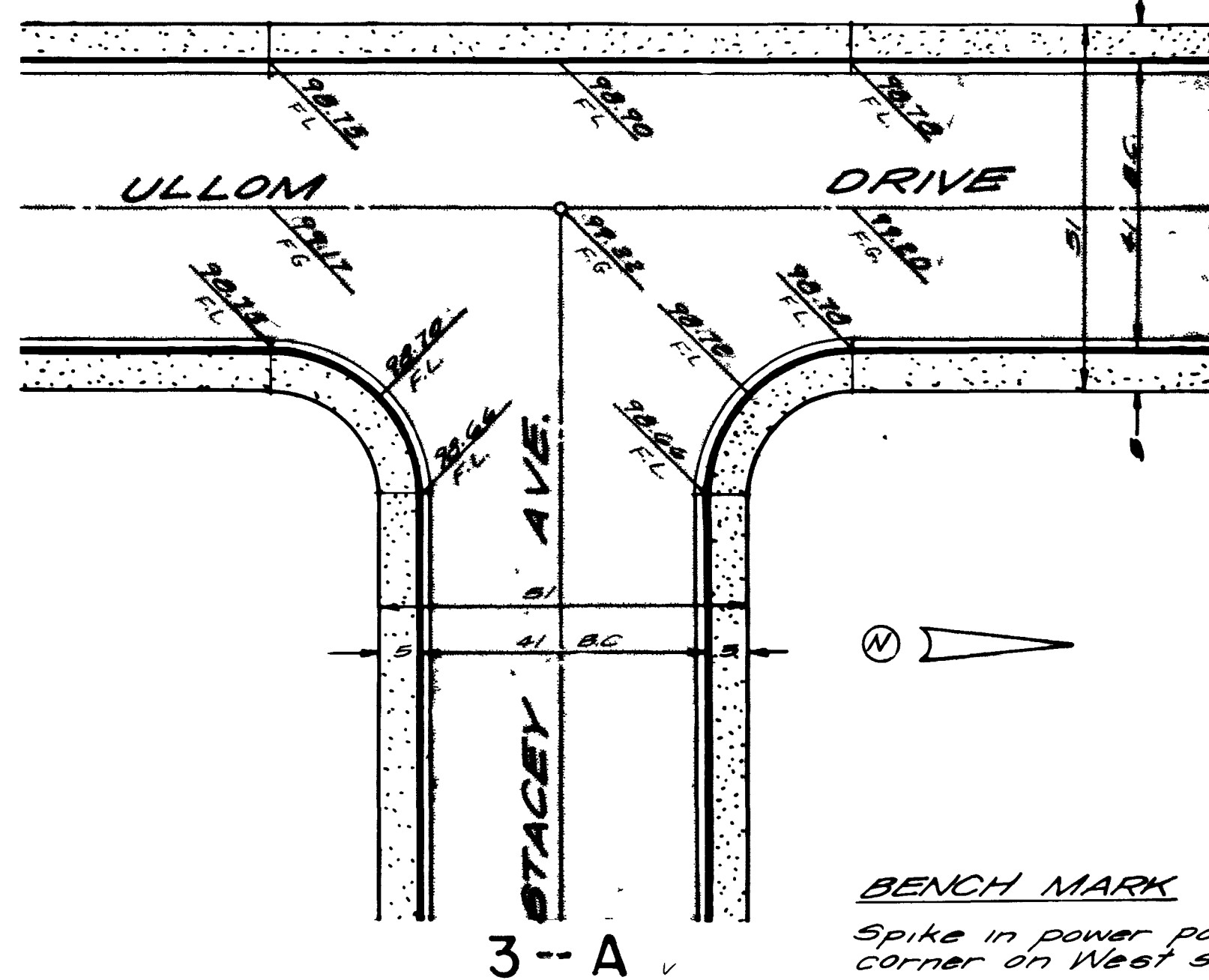
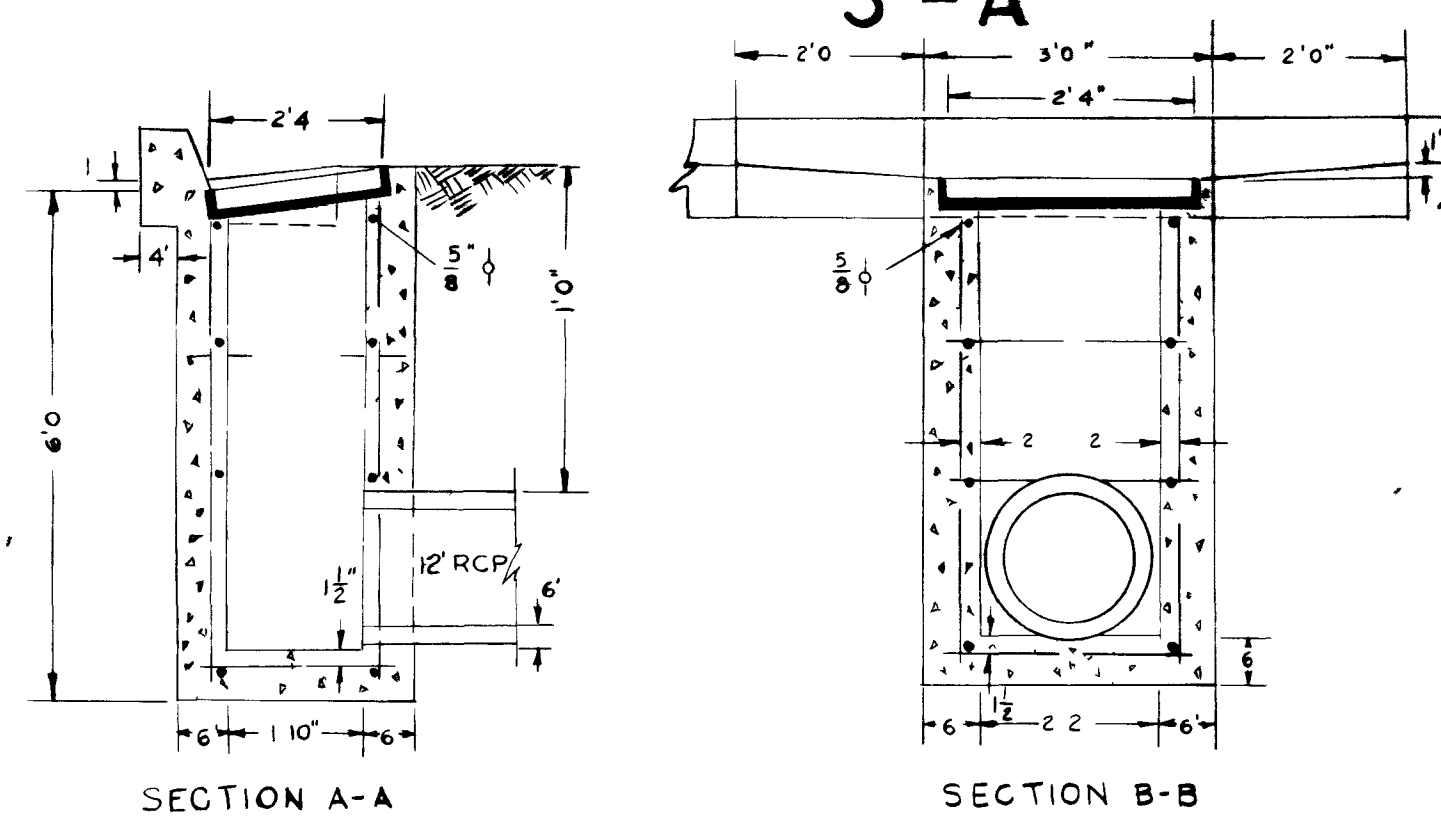
APPROXIMATE PAVING QUANTITIES	
2 1/2" ASPHALTIC CONCRETE PAVING	14,100 S.Y.
2" ASPHALTIC CONCRETE PAVING	51,700 S.Y.
1 1/2" ASPHALTIC CONCRETE PAVING	13,530 S.Y.
"L" TYPE CURB & GUTTER	23,810 L.F.
SIDEWALK	124,000 S.F.
CONC VALLEY GUTTER & APRON	7,860 S.F.
ALLEY CURB	70 L.F.
ALLEY GUTTER	650 S.F.
CONC DRAINAGE GUTTER	550 S.F.
TYPE I GRAVEL BASE	13,240 C.Y.
TYPE II GRAVEL BASE	9,180 C.Y.
EXCAVATION (ROADS & ALLEYS)	31,300 C.Y.
EXCAVATION (PADS ONLY)	



"L" CONCRETE CURB & GUTTER DETAIL



Scale of details 1" = 20'
See Note 3 this sheet



BENCH MARK

Spike in power pole #29188 approx 800' N of W 1/4 corner on West side of Decatur Ave EL 2203.81

- NOTES:**
- CLASS 'A' CONCRETE.
 - GRAVEL BASE WHERE DIRECTED BY ENGINEER.
 - PINKERTON A-227 FRAME
 - GRATE OR EQUIVALENT.

- NOTES**
- All finished grade elevations on paving profiles refer to crown at E of street unless otherwise noted.
 - All elevations in paving plans refer to top of curb at location shown.
 - All elevations in details of intersections refer to finished grade surface at crown or invert of gutter at location shown.
 - Contractor to place along the pavement edges of half streets and at the end of paving of subdivision boundaries, or at the end of a "dead end" street, 2 ft additional pavement and base. Cost to be included in unit price bid for new paving.
 - Existing pavement on Decatur Avenue and Smoke Ranch Road to be removed and replaced as required to provide smooth junction with new paving. Cost to be included in unit price bid for new paving.
 - All surplus road excavation to be spread and compacted on adjacent low lots as directed by the Engineer.
 - Valley gutter shall conform to City of Las Vegas Standard Drawings S-10 or S-10A as directed by the City Engineer. 12" wide VG across 60' R/W streets and over.
 - Construction shall conform to the following applicable City of Las Vegas Standard Details: S-4, S-5, S-6, S-7, S-8, S-9, S-10, S-10A, S-11, S-12, S-13A, S-13B, S-13C, S-13D, S-13E, S-13F, S-13G, S-13H, S-13I, S-13J, S-13K, S-13L, S-13M, S-13N, S-13O, S-13P, S-13Q, S-13R, S-13S, S-13T, S-13U, S-13V, S-13W, S-13X, S-13Y, S-13Z.

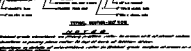
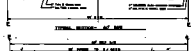
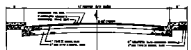
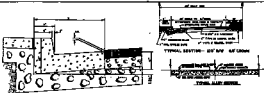
Approved by: _____ Date _____
Field Engineer

INTERSECTION DETAILS		DATE	MOORE, KEMPA & GALLOWAY, INC.
1/2" Rev grades 11.4.63	COLLEGE HEIGHTS NO. 3	5-3-63	CIVIL ENGINEERS AND LAND SURVEYORS
	PART OF THE N 1/2 OF SECTION 19, T.20S., R.6E.,	CHD: HN	PHOENIX LAS VEGAS
	M.D.B.M., LAS VEGAS, CLARK COUNTY, NEVADA	CHD: GV	
	CLIENT FIRST WESTERN SAVINGS & LOAN ASSN.	SCALE: 1" = 20'	6 OF 40
			4-11-64

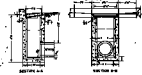
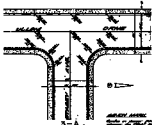
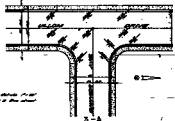
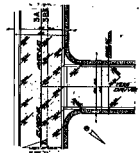
4007

104-110-3

ALPHABETICALLY ARRANGED DESCRIPTIONS	QUANTITIES
1. CONCRETE CURB AND GUTTER	1.00
2. CONCRETE SIDEWALK	1.00
3. CONCRETE DRIVEWAY	1.00
4. CONCRETE DRIVEWAY	1.00
5. CONCRETE DRIVEWAY	1.00
6. CONCRETE DRIVEWAY	1.00
7. CONCRETE DRIVEWAY	1.00
8. CONCRETE DRIVEWAY	1.00
9. CONCRETE DRIVEWAY	1.00
10. CONCRETE DRIVEWAY	1.00
11. CONCRETE DRIVEWAY	1.00
12. CONCRETE DRIVEWAY	1.00
13. CONCRETE DRIVEWAY	1.00
14. CONCRETE DRIVEWAY	1.00
15. CONCRETE DRIVEWAY	1.00
16. CONCRETE DRIVEWAY	1.00
17. CONCRETE DRIVEWAY	1.00
18. CONCRETE DRIVEWAY	1.00
19. CONCRETE DRIVEWAY	1.00
20. CONCRETE DRIVEWAY	1.00



"C" CURB AND GUTTER DETAIL



- 1. All drainage grade shall be maintained as shown on drawings.
- 2. All drainage grade shall be maintained as shown on drawings.
- 3. All drainage grade shall be maintained as shown on drawings.
- 4. All drainage grade shall be maintained as shown on drawings.
- 5. All drainage grade shall be maintained as shown on drawings.
- 6. All drainage grade shall be maintained as shown on drawings.
- 7. All drainage grade shall be maintained as shown on drawings.
- 8. All drainage grade shall be maintained as shown on drawings.
- 9. All drainage grade shall be maintained as shown on drawings.
- 10. All drainage grade shall be maintained as shown on drawings.

MADE BY: [Signature]

DATE: [Date]

PROJECT: [Project Name]

REVISIONS		DATE	
NO.	DESCRIPTION	DATE	BY
1	ISSUED FOR BIDDING		
2	ISSUED FOR BIDDING		
3	ISSUED FOR BIDDING		
4	ISSUED FOR BIDDING		
5	ISSUED FOR BIDDING		
6	ISSUED FOR BIDDING		
7	ISSUED FOR BIDDING		
8	ISSUED FOR BIDDING		
9	ISSUED FOR BIDDING		
10	ISSUED FOR BIDDING		