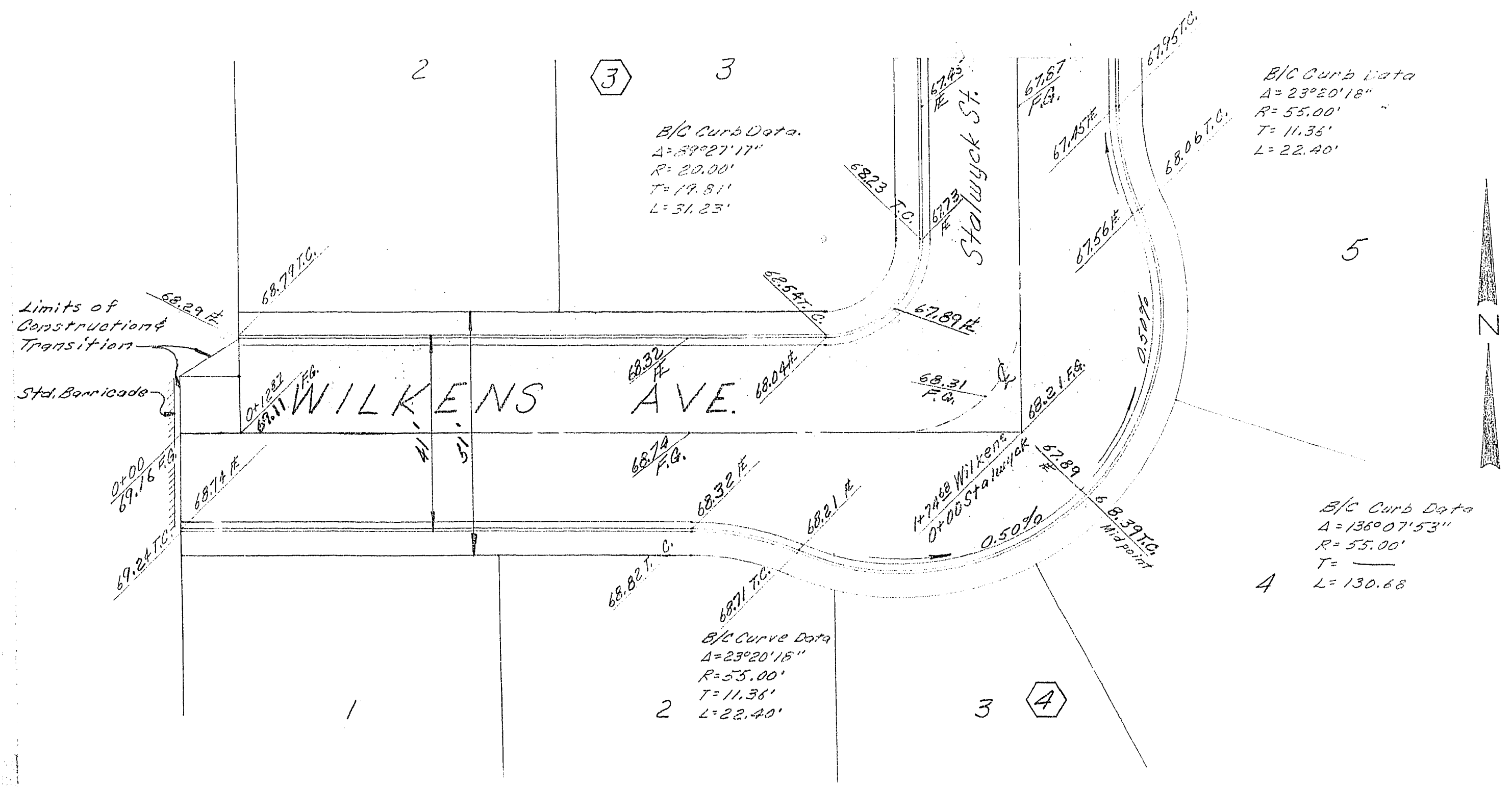


SCALE: Horiz: 1"=20'  
Vert: 1"=1'



Engineer: W. T. de Valcourt, Jr.  
W. T. de Valcourt, Jr. R.C.E. 1816

Approved: R. J. Sauer 6-22-64  
City Engineer.

R. K. Anderson 6-17-64  
FIELD ENGINEER

1	5/1/64	General Revision According to C.L.V.	W.T.	6/16/64
NO.	DATE	REVISIONS	BY	CR
BUSINESS ENGINEERING ARCHITECTURE MANAGEMENT, INC.			CLIENT APPR.	DATE
LAS VEGAS, NEVADA			W.T.	5/1/64
COLLEGE HEIGHTS #6			DRAWN BY	CHECKED BY
STREET PLAN & PROFILE			W.T.	W.T.
beam, inc.			DIV. MGR.	SCALE
			B. J. Sauer	1"=20'
			SHEET 5 OF 24	
			DRAWING NO.	

Wilkens Ave.  
1074-1110-6