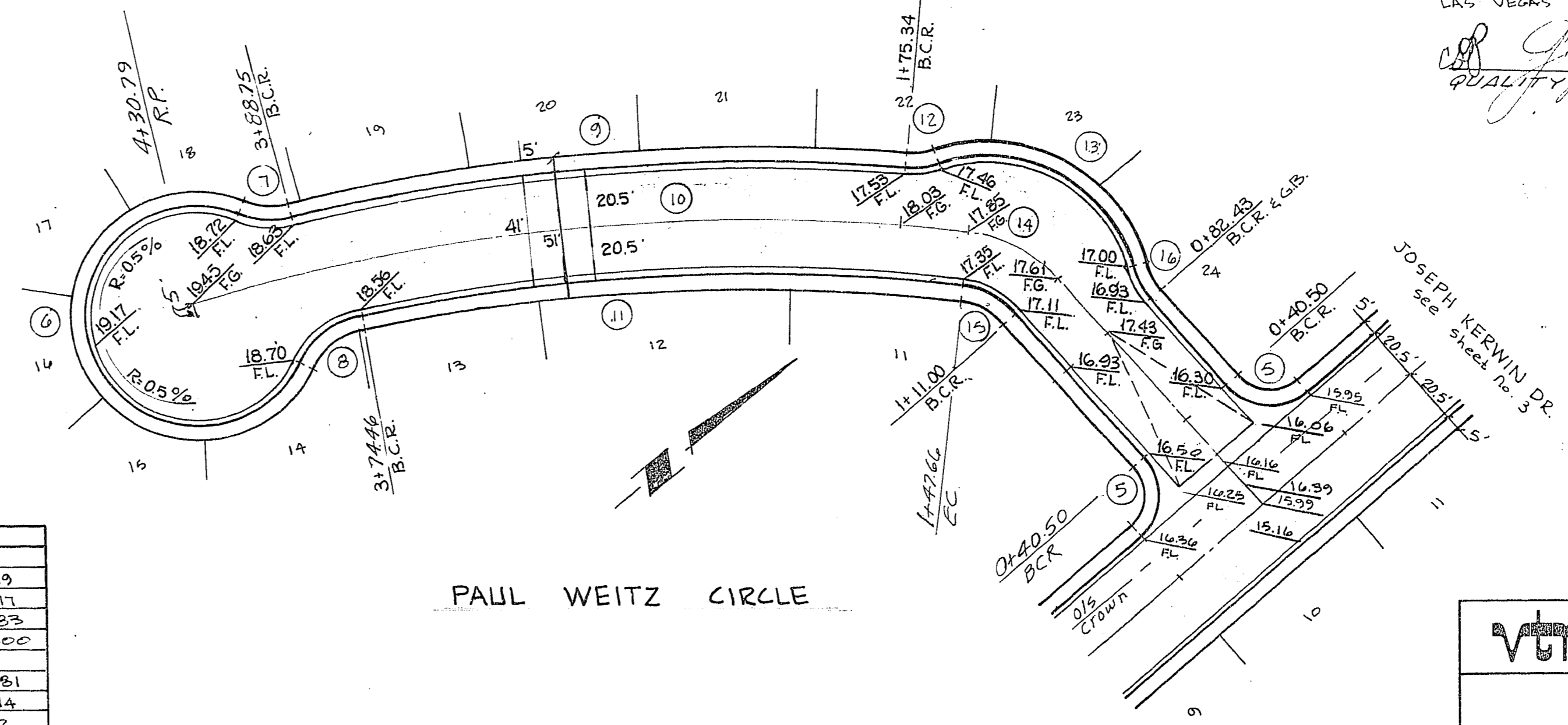


CHARLES CONRAD CIRCLE



PAUL WEITZ CIRCLE

CURVE DATA

No	Δ	R	L	T
1	268-29-54	40.50	189.79	
2	44-14-57	30.00	23.17	12.19
3	20-28-43	20.00	31.58	20.17
4	87-31-17	20.00	31.25	19.83
5	90-00-00	20.00	31.42	20.00
6	267-19-37	40.50	188.96	
7	36-14-33	30.00	18.97	9.81
8	52-21-19	30.00	21.41	14.74
9	18-58-22	665.00	220.20	111.12
10	25-10-09	644.50	223.11	143.88
11	22-29-41	824.00	219.57	110.93
12	23-5-39	320.00	13.13	6.67
13	95-45-39	55.00	91.92	60.82
14	41-38-8	50.50	36.67	19.18
15	41-38-8	30.00	21.78	11.37
16	26-36-18	30.00	13.93	7.09

APPROVED BY:
William J. Davis 4/8/77
 LAS VEGAS CITY ENGINEER DATE
Robert J. Nelson 6/5/77
 LAS VEGAS FIELD ENGINEER DATE
Chasley R. Johnson 8/11/77
 QUALITY CONTROL ENGINEER DATE

CONSULTING ENGINEERS & PLANNERS
 2291 PARKSIDE ROAD LAS VEGAS, NEVADA 89106
 (702) 735-0227

CHARLESTON RAINBOW
 UNIT NO 15A
 Street Plan and Profile of:
 Paul Weitz Circle & Charles Conrad Cir.

SCALE:	WO. NO. 1066-15A	DATE 1/11/77	SHEET	OF
HORIZ: 1" = 40'	DES.	REV.	4	8
VERT: 1" = 4'	CHK.	REV.		

SUBMITTED BY:
Chasley R. Johnson 1/11/77
 CHASLEY R. JOHNSON P.E. No. 3005 DATE