

STREET LIGHTING SPECIFICATIONS

Underground 240 Volt Single Phase Two Wire System

Street lighting standards shall be as shown by Drawing No. 400.1 Page 40 of Uniform Standard Drawings and must conform to Sections 400 and 405 and any other applicable sections of the Uniform Standard Specifications.

On 80' R/W streets, there shall be two poles on diagonal corners.

On 100' R/W streets, there shall be one pole at each corner.

HIGH PRESSURE SODIUM luminaires to be used on 51' R/W and 60' R/W streets, shall be 100 watt, 240 volt I.E.S., distribution Type 3, with integral constant wattage ballasts, similar to GEN. ELEC. TYPE M250A CAT. # C728G584 OR APPROVED EQUAL.

HIGH PRESSURE SODIUM LUMINAIRES TO BE USED ON 80' R/W ST'S. AND OVER, SHALL BE 250 WATT 240VOLT, I.E.S. DISTRIBUTION TYPE 3 WITH INTEGRAL CONSTANT WATTAGE BALLAST SIMILAR TO GEN. ELEC. TYPE M-100A, CAT. # C728G504 OR APPROVED EQUAL.

* Spacing of standards shall be 180 feet maximum on 51' R/W and 60' R/W streets on one side.

Spacing of standards shall be 180 feet maximum on 80' R/W streets on EACH side, staggered.

Spacing of standards on 100' R/W streets or more shall be 120 feet maximum on EACH side, staggered.

All standards to be 18" back of curb.

Schedule 40 rigid non-metallic conduit (PVC) or approved equal complying with Article 347 of the National Electrical Code may be used for underground applications and to be within 12" back of curb and 24" cover.

Fuse holders and connectors shall be installed in the bases of all lighting standards; the fuse holders shall be Buss-Tronhex-AA, WITH RUBBER BOOTS.

Base covers for lighting standards are not to be installed before breakout caps are placed and inspected. All material used in underground wiring, in breakout caps and under base covers to be inspected before installations.

Foundations shall be constructed and located to line and grade as directed by the Field Engineer.

Lighting standard and mast arm cable to luminaire shall be 10/2 U.F. Type 400 volt copper cable.

The contractor shall be responsible for avoiding damage to property, either public or private, and in the event of such damage shall make satisfactory repairs at his own expense.

The Contractor shall furnish complete service to transformers and control system, if required.

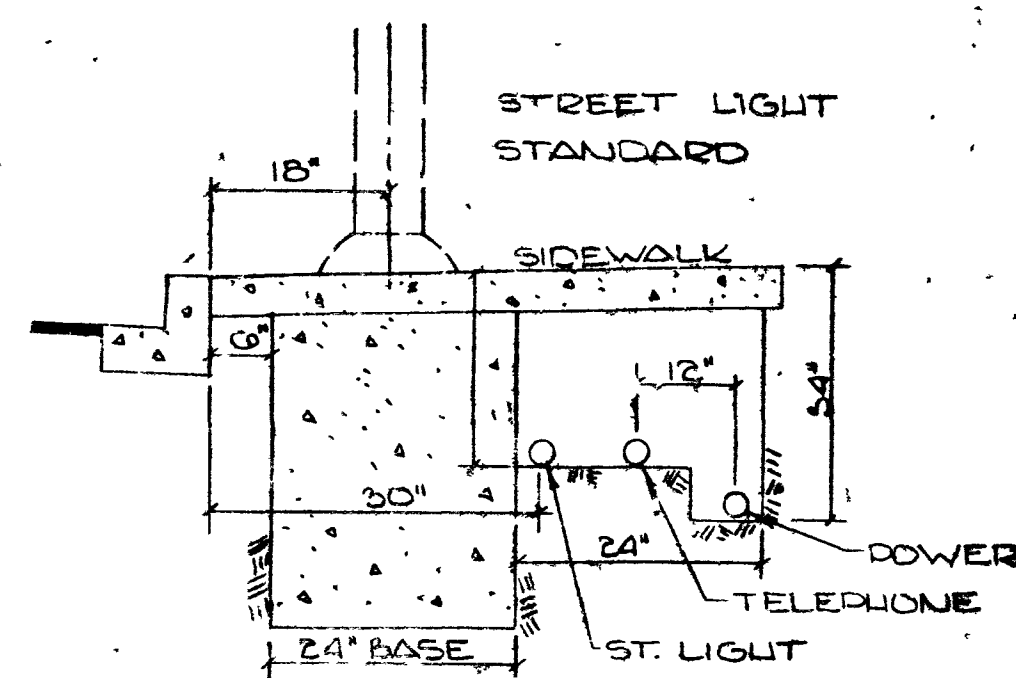
The service point standard is to be installed at the approved location shown on plans and to conform to Drawing No. 401.1, Page 44 of the Uniform Standard Drawings.

In the selection of 100 & 250 WATT HIGH PRESSURE SODIUM luminaires to be used in a particular development, one approved manufacturer shall be specified.

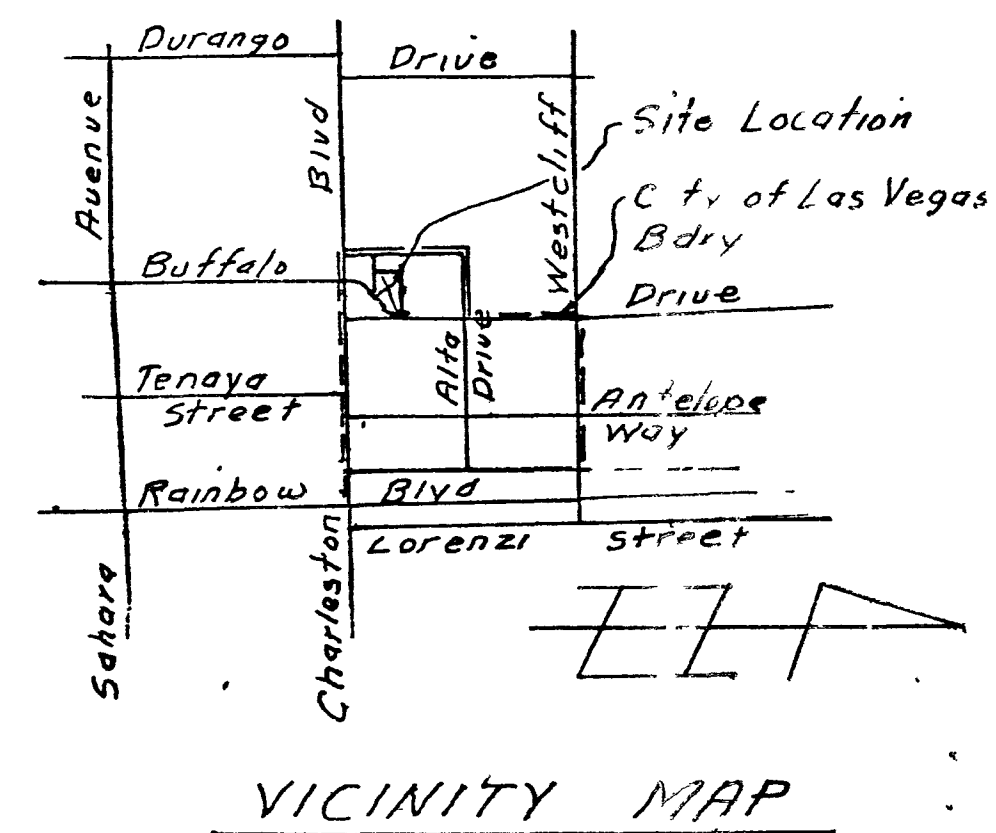
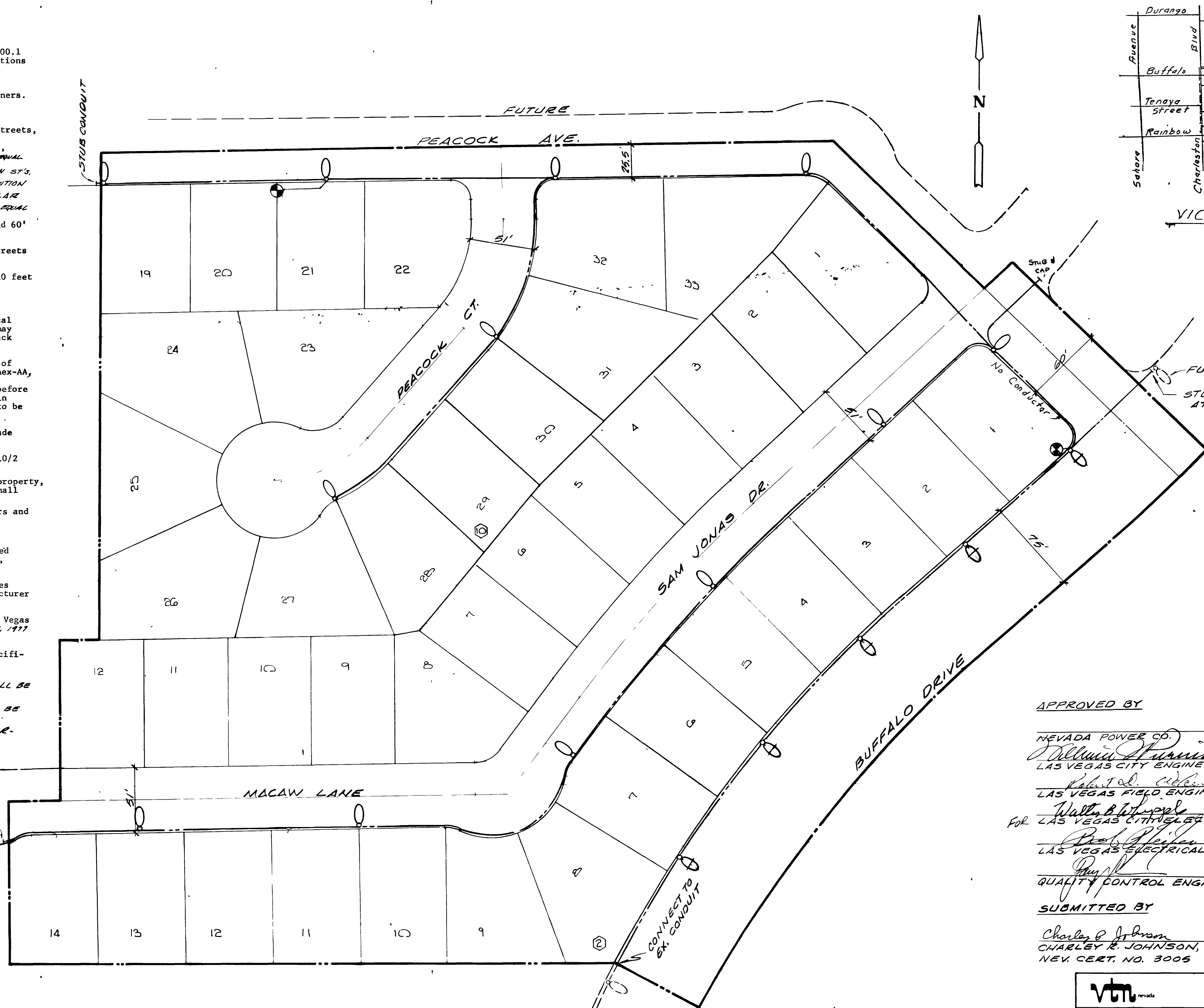
These specifications to become effective on all City of Las Vegas multiple street lighting designs approved on or after MAY 1, 1977

These specifications shall be superceded by any revised specifications in existence at the time of installation.

* 100 WATT HIGH PRESSURE SODIUM LAMPS SHALL BE SYLVANIA LU100 OR APPROVED EQUAL.
 250 WATT HIGH PRESSURE SODIUM LAMPS SHALL BE SYLVANIA LU250 OR APPROVED EQUAL.
 PHOTO CELL & CONTROL TO BE 120 VOLTS. FISHER-PIERCE 6660 OR APPROVED EQUAL.



TYPICAL TRENCH DETAIL



VICINITY MAP

APPROVED BY

NEVADA POWER CO.	DATE
<i>William Starnes</i>	6/28/77
LAS VEGAS CITY ENGINEER	DATE
<i>Robert Cohen</i>	6-20-77
LAS VEGAS FIELD ENGINEER	DATE
<i>Walter B. Johnson</i>	6/16/77
FOR LAS VEGAS CITY ELECTRICIAN	DATE
<i>Paul R. Johnson</i>	6/16/77
LAS VEGAS ELECTRICAL COORDINATOR	DATE
<i>Paul R. Johnson</i>	6/16/77
QUALITY CONTROL ENGINEER	DATE
<i>Paul R. Johnson</i>	6/16/77

SUBMITTED BY

Charles R. Johnson 5/26/77
 CHARLEY R. JOHNSON, RPE DATE
 NEV. CERT. NO. 3005

LEGEND & QUANTITY ESTIMATE:

- ⊕ 250 W. LUMINAIRE 5 EA.
- 100 W LUMINAIRE 12 EA.
- 11 GA. STANDARD 17 EA.
- 1 1/2" SNG. 40 PVC CONDUIT 2740 LF
- Service Wire 2*281*6 THW
- All field wires 2*4

vtm CONSULTING ENGINEERS • PLANNERS
 2209 PARADISE ROAD LAS VEGAS NEVADA 89103
 702 735-0227

CHARLESTON RAINBOW
 UNIT NO. 15 - B

MASTER STREET LIGHT PLAN

SCALE 1" = 40'	WO NO 10GG-15	DATE 5/26/77	SHEET	OF
HORIZ	DES.	REV.	10	10
VERT	CHK.	REV.		

