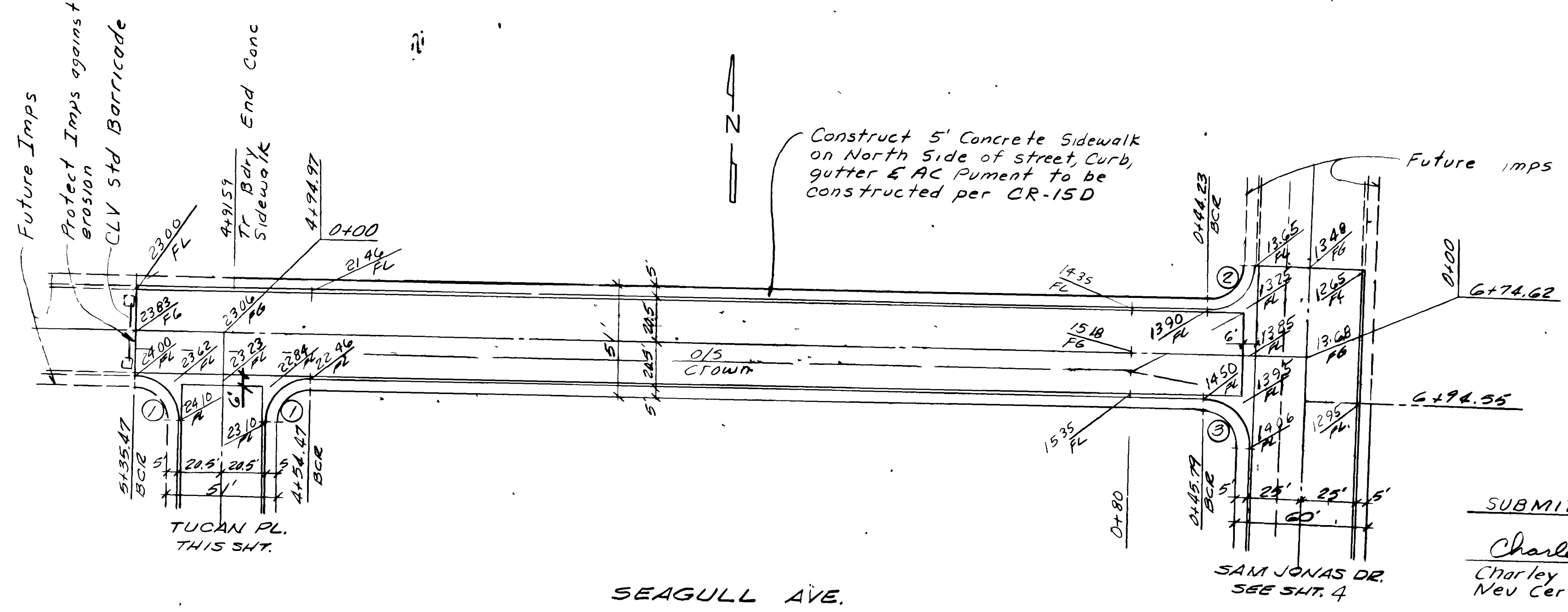


TUCAN PL.
Improvements to be constructed
per CR No 15 B



SEAGULL AVE.

SUBMITTED BY
Charley R. Johnson 10/4/77
Charley R. Johnson RPE
Nev Cert No 3005

APPROVED BY
William J. Johnson 11/23/77
Las Vegas City Engineer date
Robert M. Cole 11-15-77
Las Vegas Field Engineer date
Quality Control Engineer 11/15/77
date

NO.	A	R	L	T
1	90°00'00"	20.00'	31.42'	20.00'
2	88°53'42"	20.00'	31.03'	19.62'
3	91°06'18"	20.00'	31.80'	20.39'

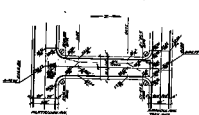
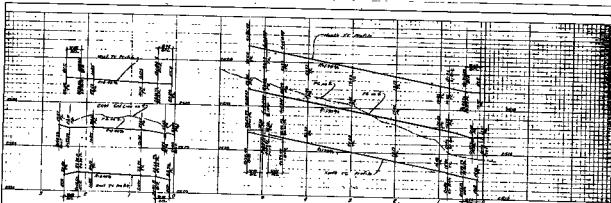
vti CONSULTING ENGINEERS & PLANNERS
200 PARKWAY BLVD LAS VEGAS, NEVADA 89102

CHARLESTON RAINBOW
UNIT 15 -
STREET PLAN & PROFILE
TUCAN PL. - SEAGULL AVE.

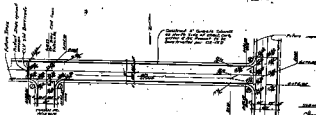
SCALE
HORIZ 1" = 40'
VERT 1" = 4'

WO NO 1066-15
DES DATE 10/4/77
CHK REV

SHEET 5 OF 11



TUGAN PL.
Intersection of Beardall Ave.



BEARDALL AVE.

APPROVED BY
[Signature]
 CITY ENGINEER
 1911

DESIGNED BY
[Signature]
 CIVIL ENGINEER

NO.	DATE	BY	FOR
1	1911
2	1911
3	1911

YON-
 CHARLESTON ENGINEERING & SURVEYING CO.
 110 N. 11th St.
 CHARLESTON, S.C.

CHARLESTON ENGINEERING & SURVEYING CO.
 SHEET NO. 2
 STREET PLAN OF CHARLESTON
 TUGAN PL. - BEARDALL AVE.

DATE 1911
 NO. 5