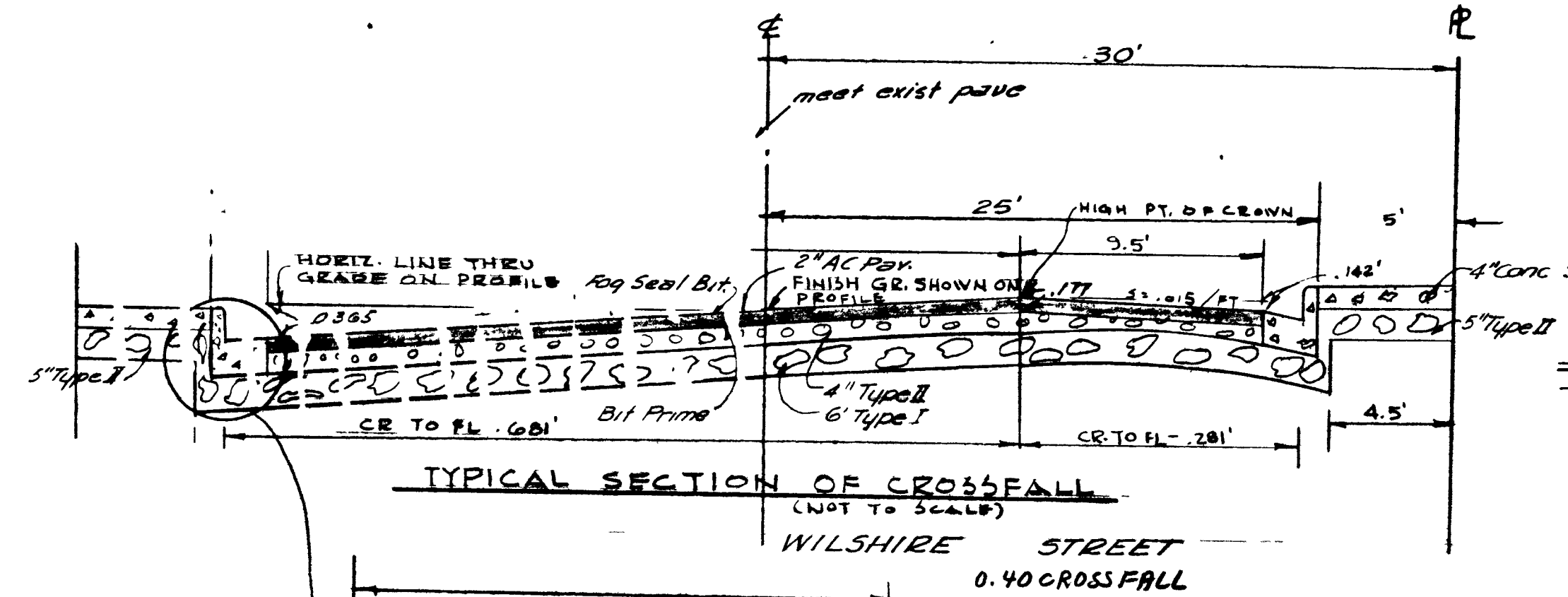
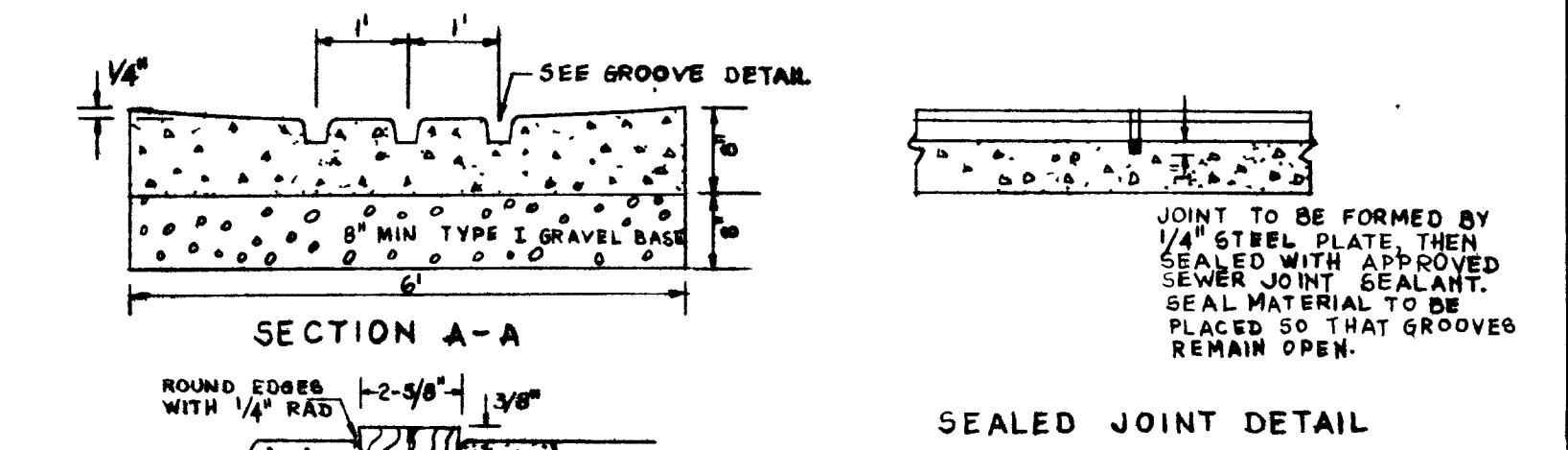
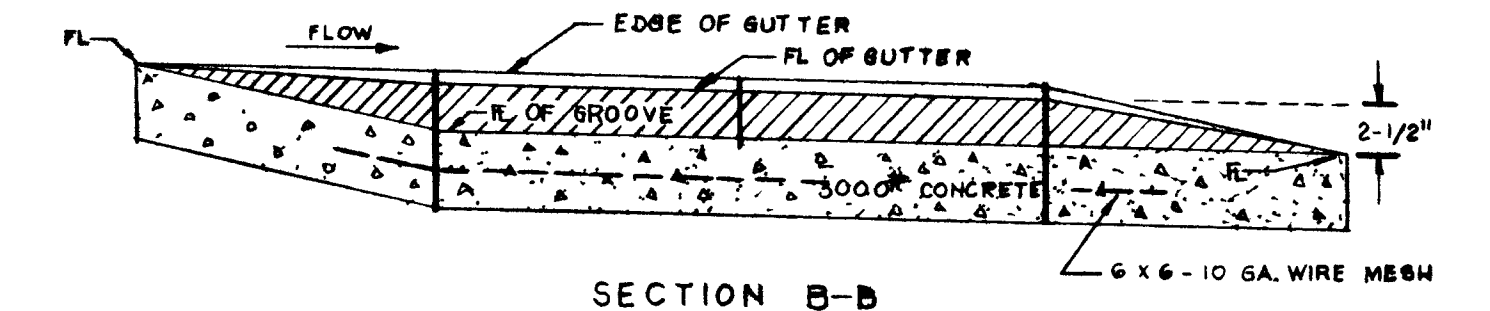
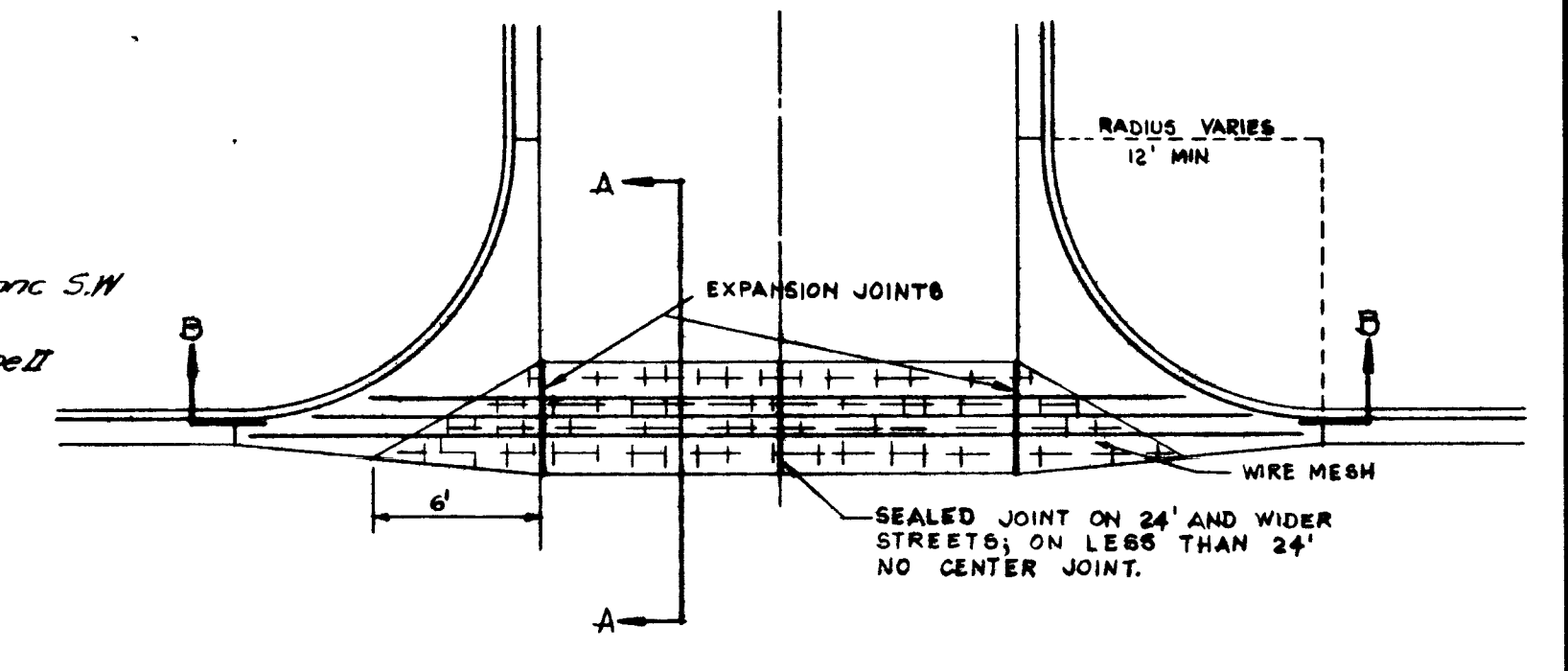


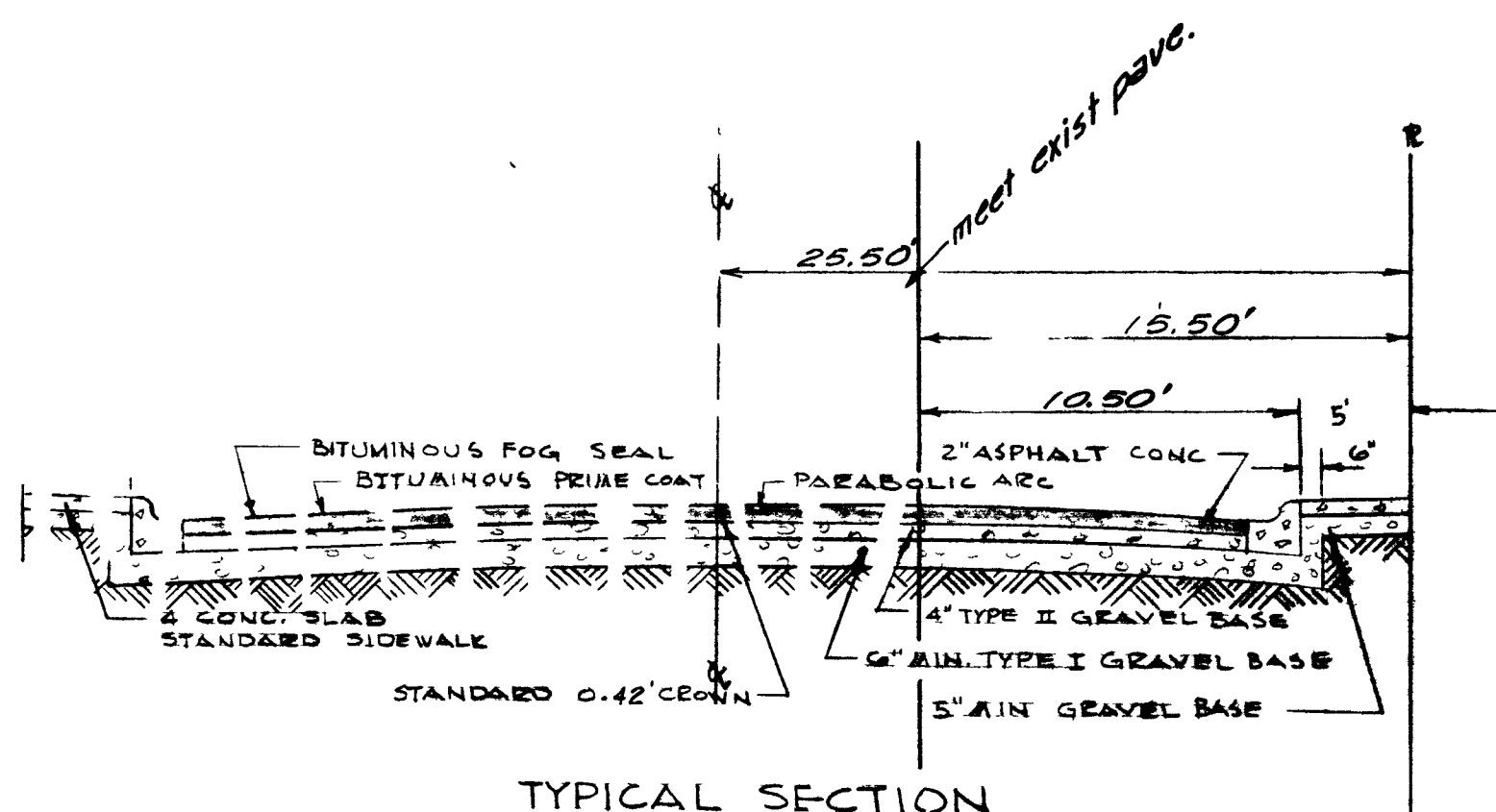
TYPICAL SECTION for 51' R/W
L' TYPE CURB & GUTTER
MOUNTAIN VIEW DRIVE
DEL REY AVENUE



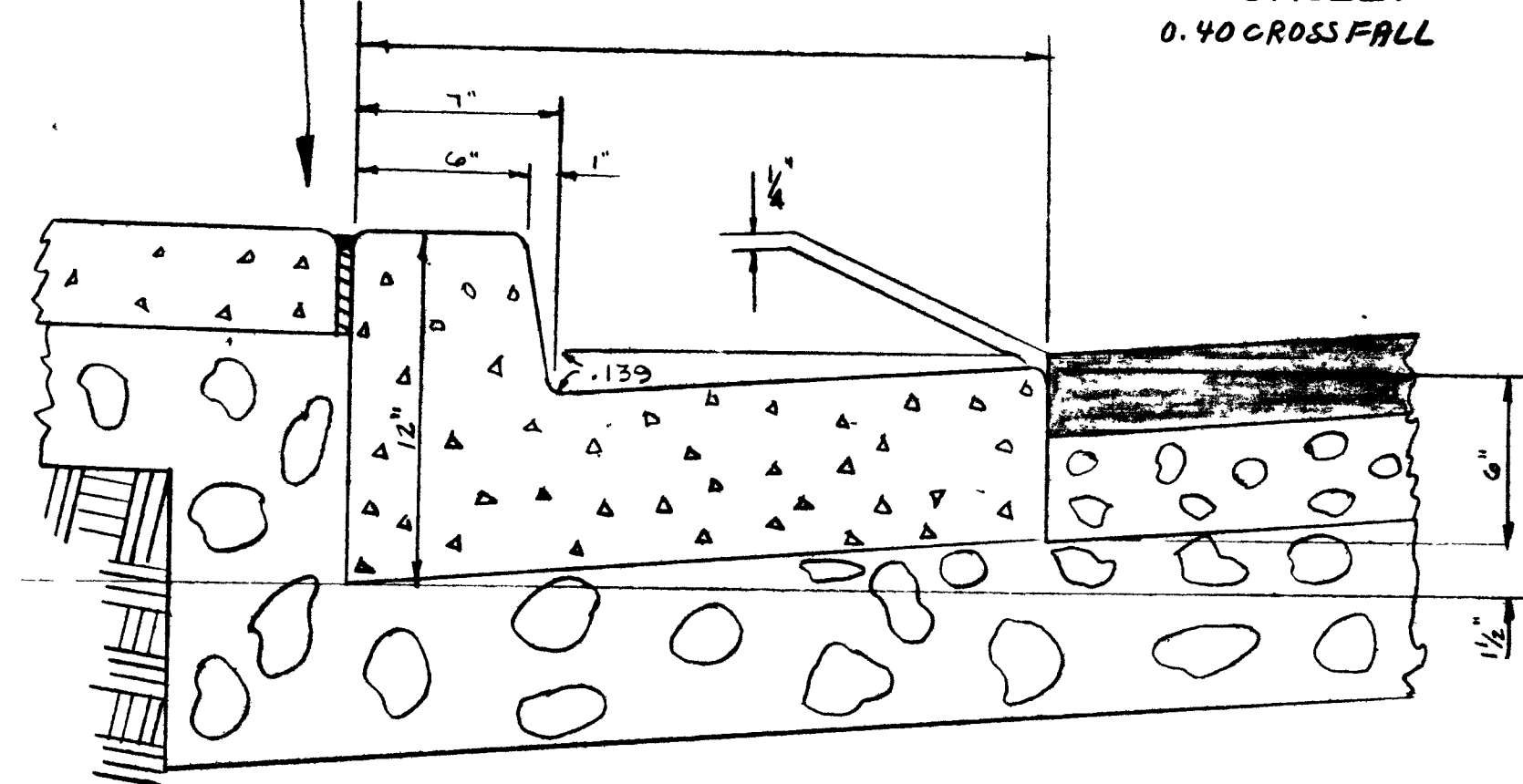
TYPICAL SECTION OF CROSSFALL
(NOT TO SCALE)
WILSHIRE STREET
0.40 CROSSFALL



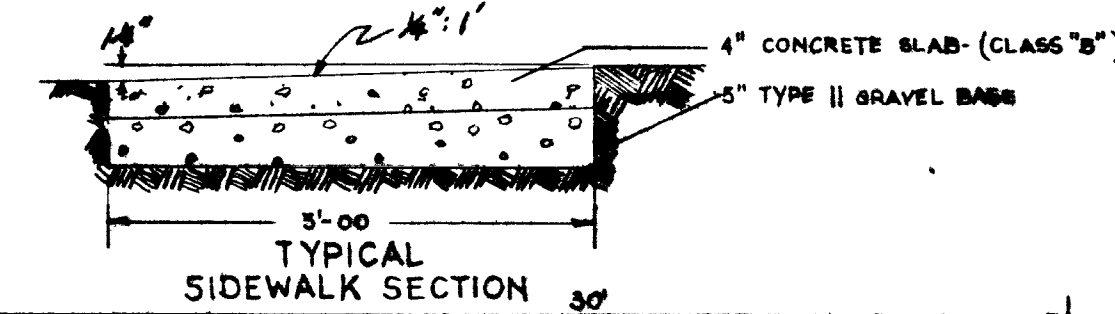
VALLEY GUTTER DETAIL



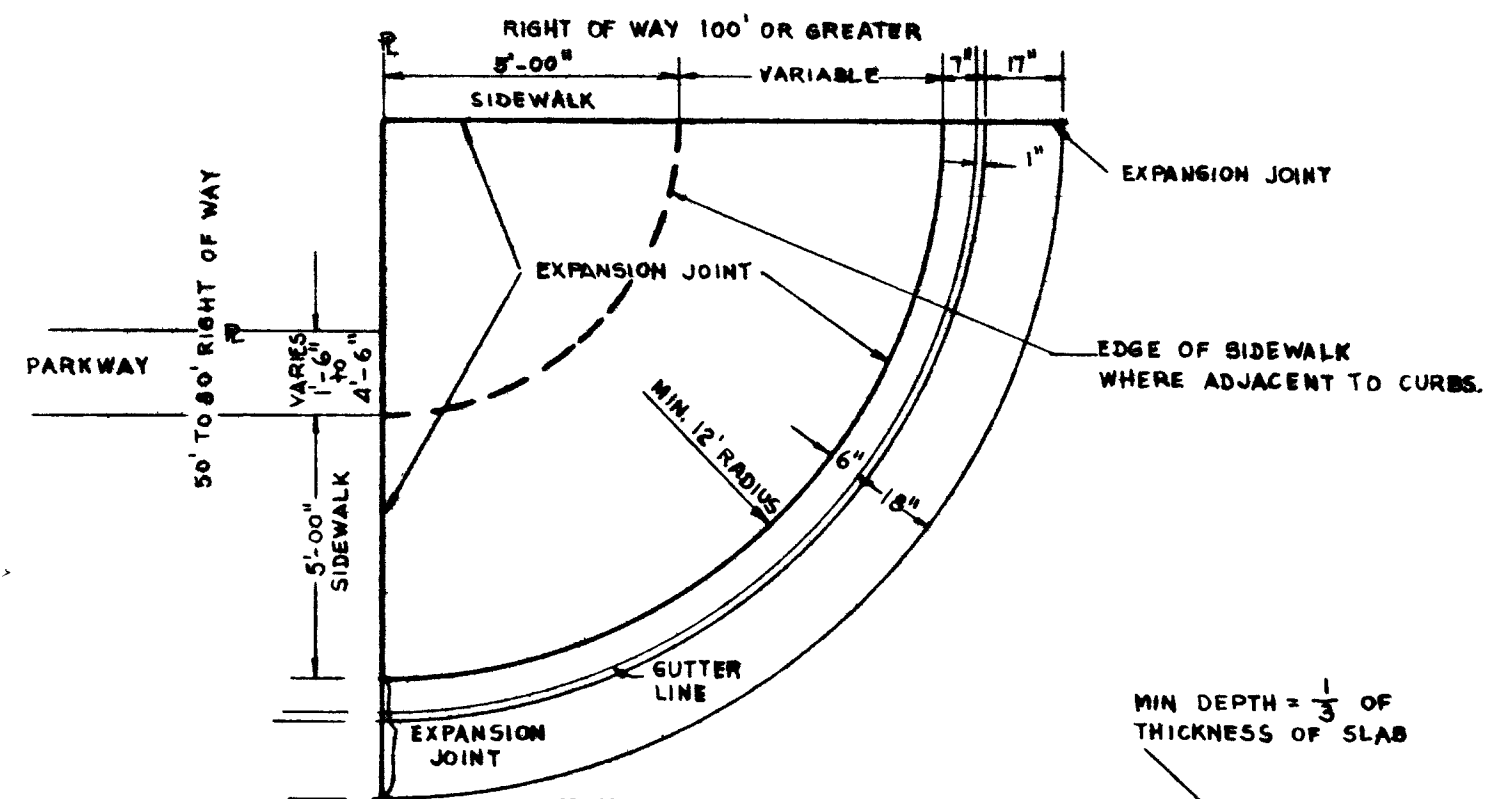
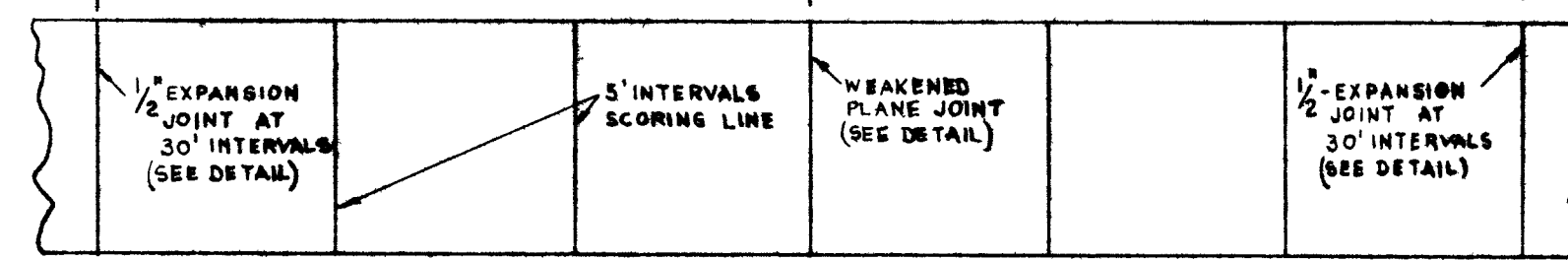
TYPICAL SECTION
LONGRIDGE AVENUE
L' TYPE CURB & GUTTER



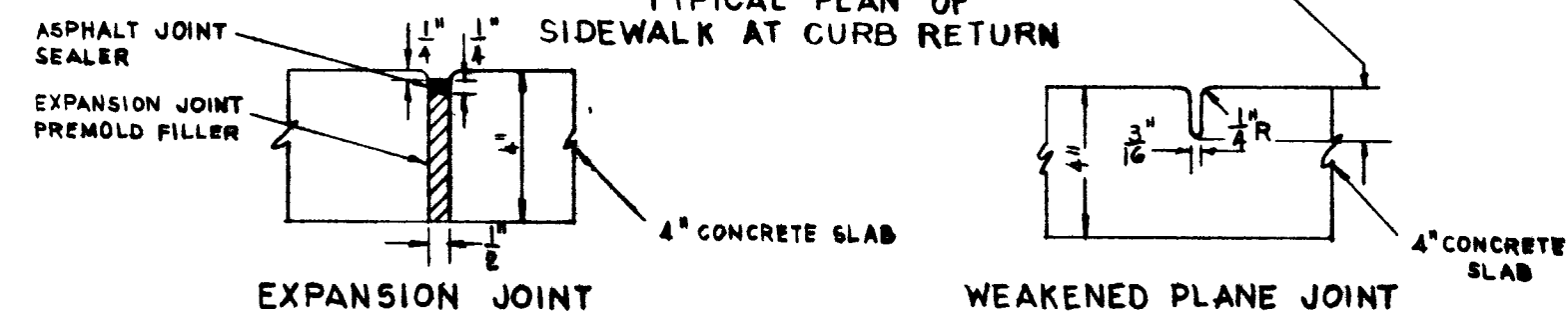
L' TYPE CURB DETAIL



TYPICAL SIDEWALK SECTION



TYPICAL PLAN OF SIDEWALK AT CURB RETURN



SIDEWALK DETAIL

APPROVALS
CITY ENGINEER
FIELD ENGINEER
2/27/69
DATE
4-6-63
DATE

CHARLESTON HILLS UNIT #2
STREET DETAILS

DESIGNED BY WESTERN ENGINEERS, INC.
DRAWN BY LAS VEGAS NEVADA SHEET 4
CHECKED APPROVED DATE 4/6/63

3619 1074-1045-2
CITY STREET



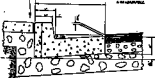
TYPICAL PLAN
OF THE BRIDGE
AND THE APPROACHES



TYPICAL SECTION OF BRIDGE PIER



TYPICAL PLAN OF BRIDGE DECK



TYPICAL SECTION OF BRIDGE DECK



SECTION 2-2



SECTION 3-3



SECTION 4-4



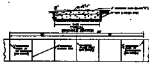
SECTION 5-5



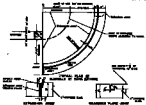
SECTION 6-6



TYPICAL SECTION
APPROACH
V BRIDGE DECK



TYPICAL SECTION OF BRIDGE DECK



TYPICAL SECTION



CONCRETE PIER
SECTION

DATE	BY	CHECKED