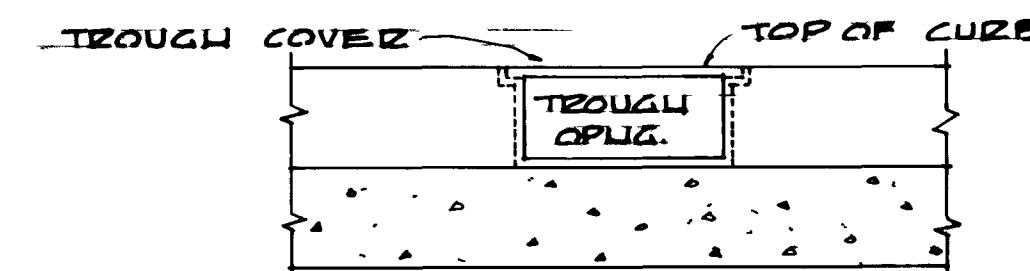
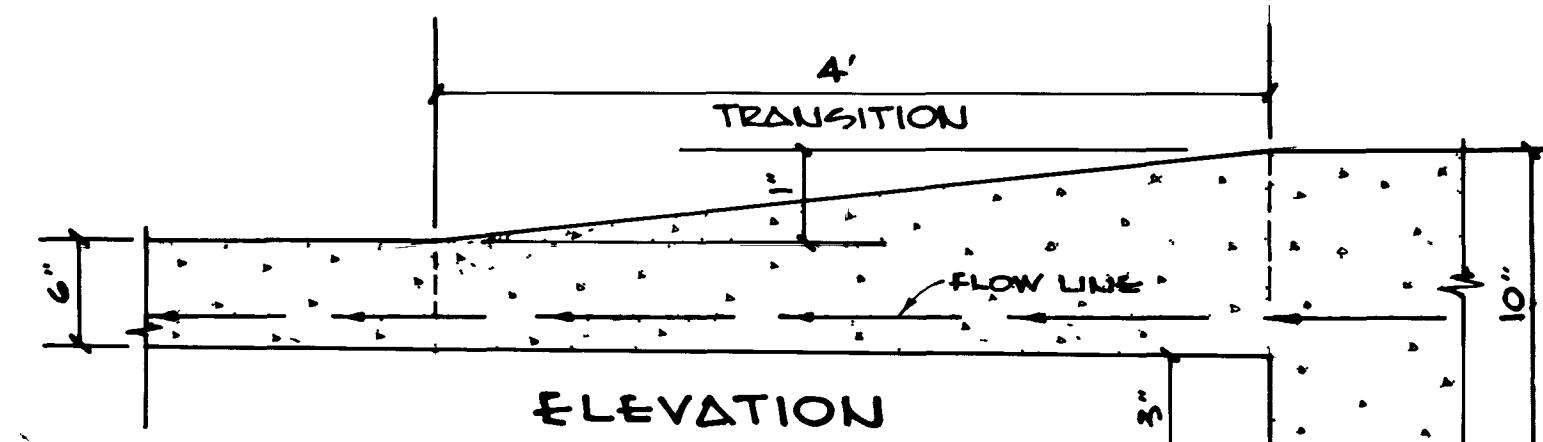
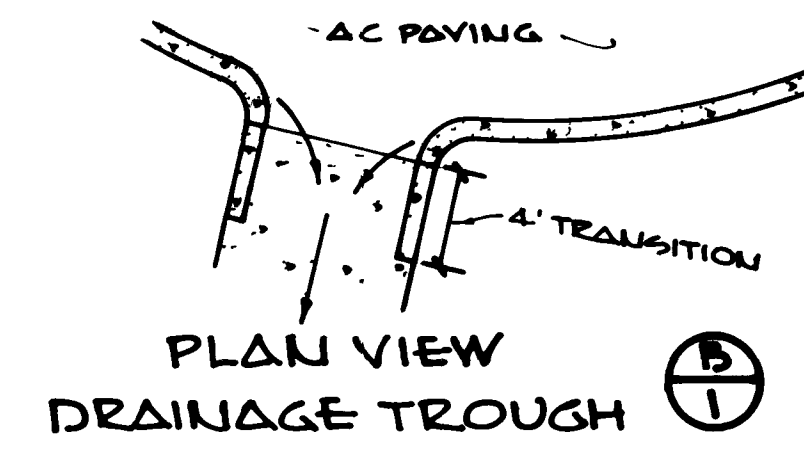
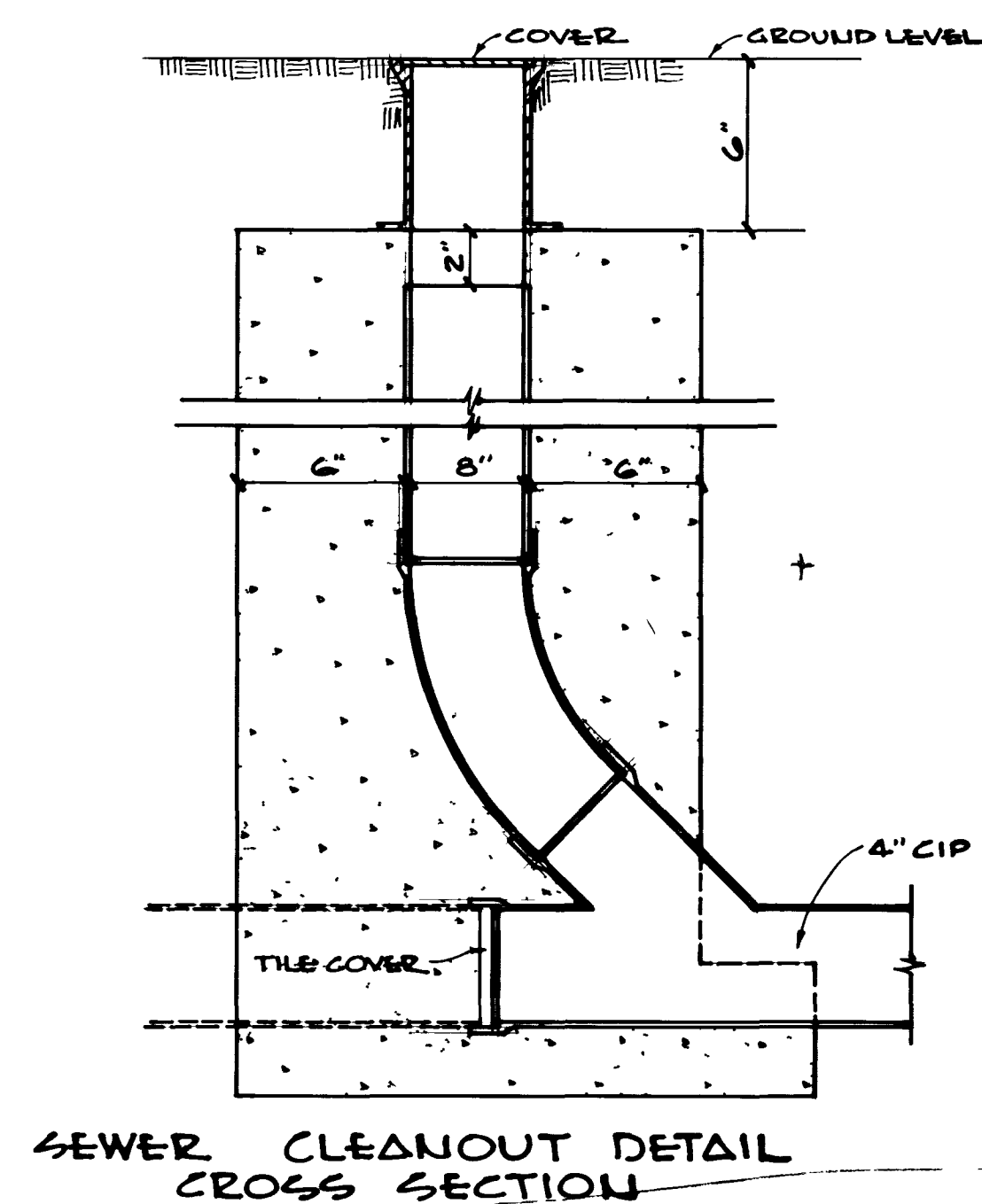
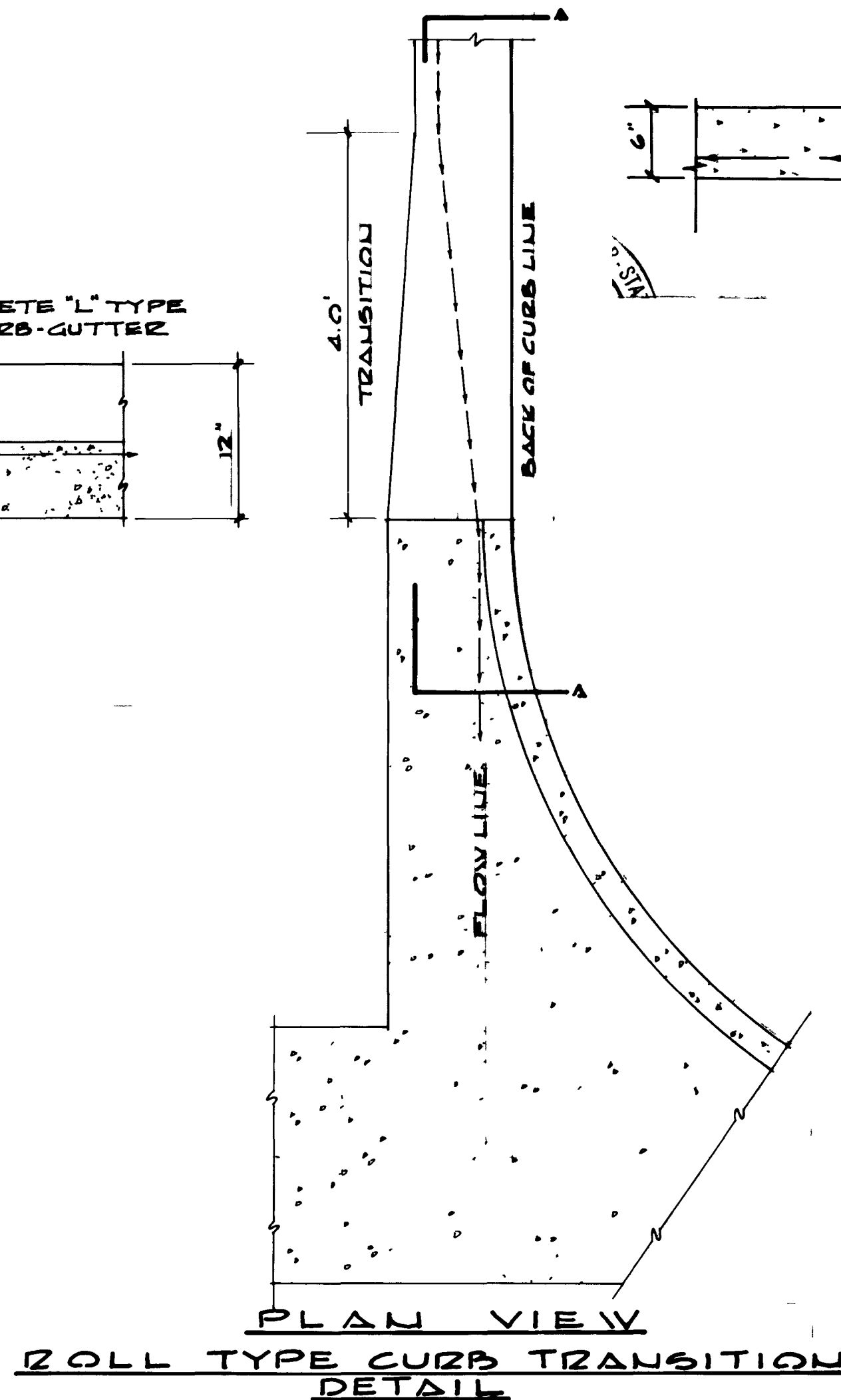
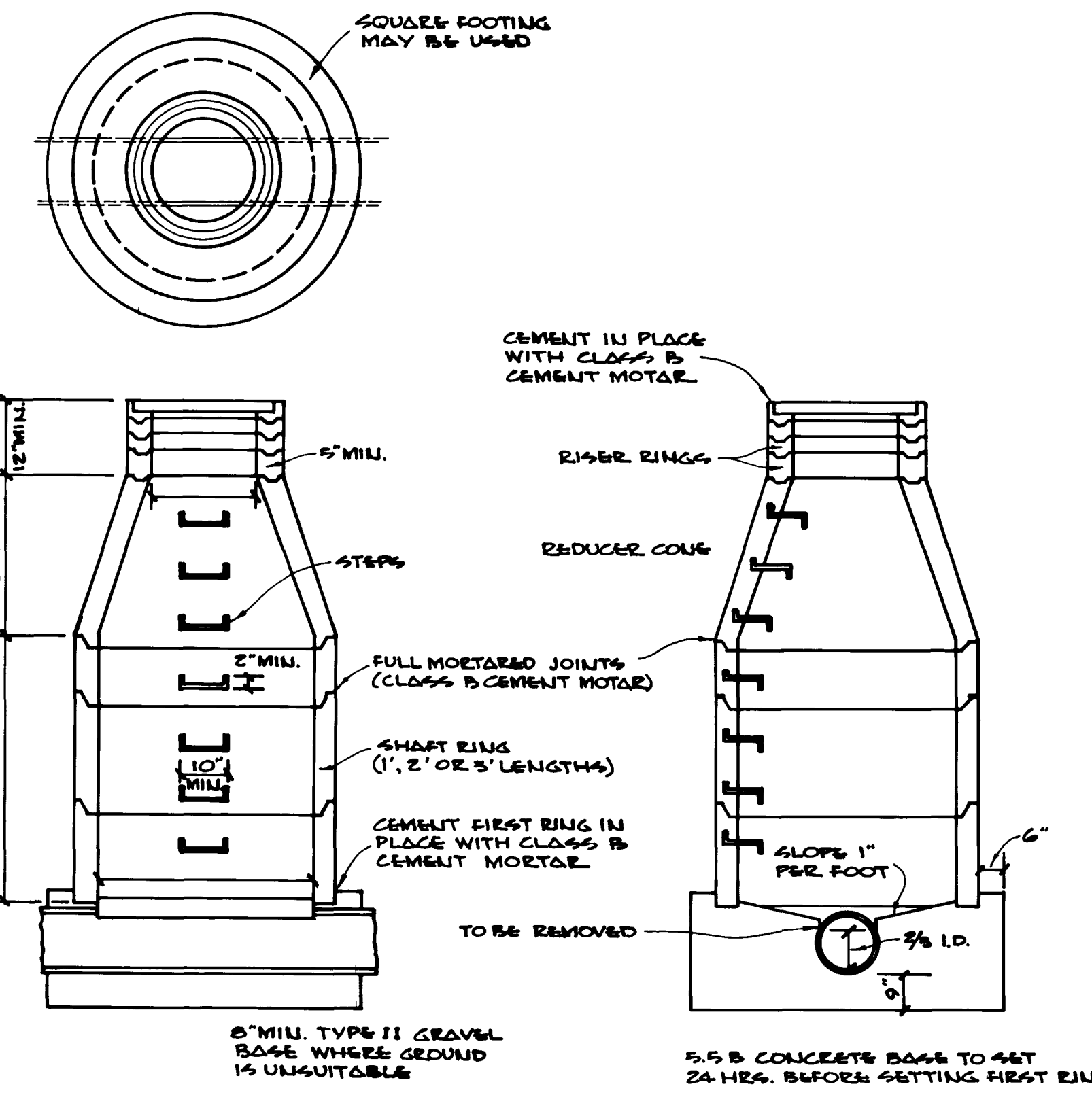
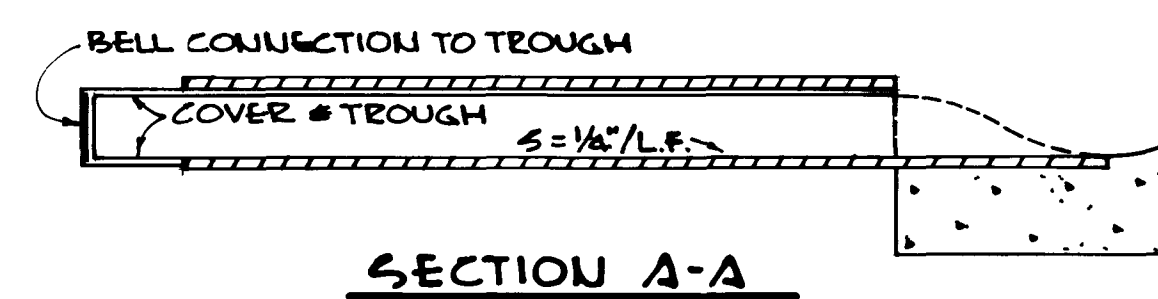
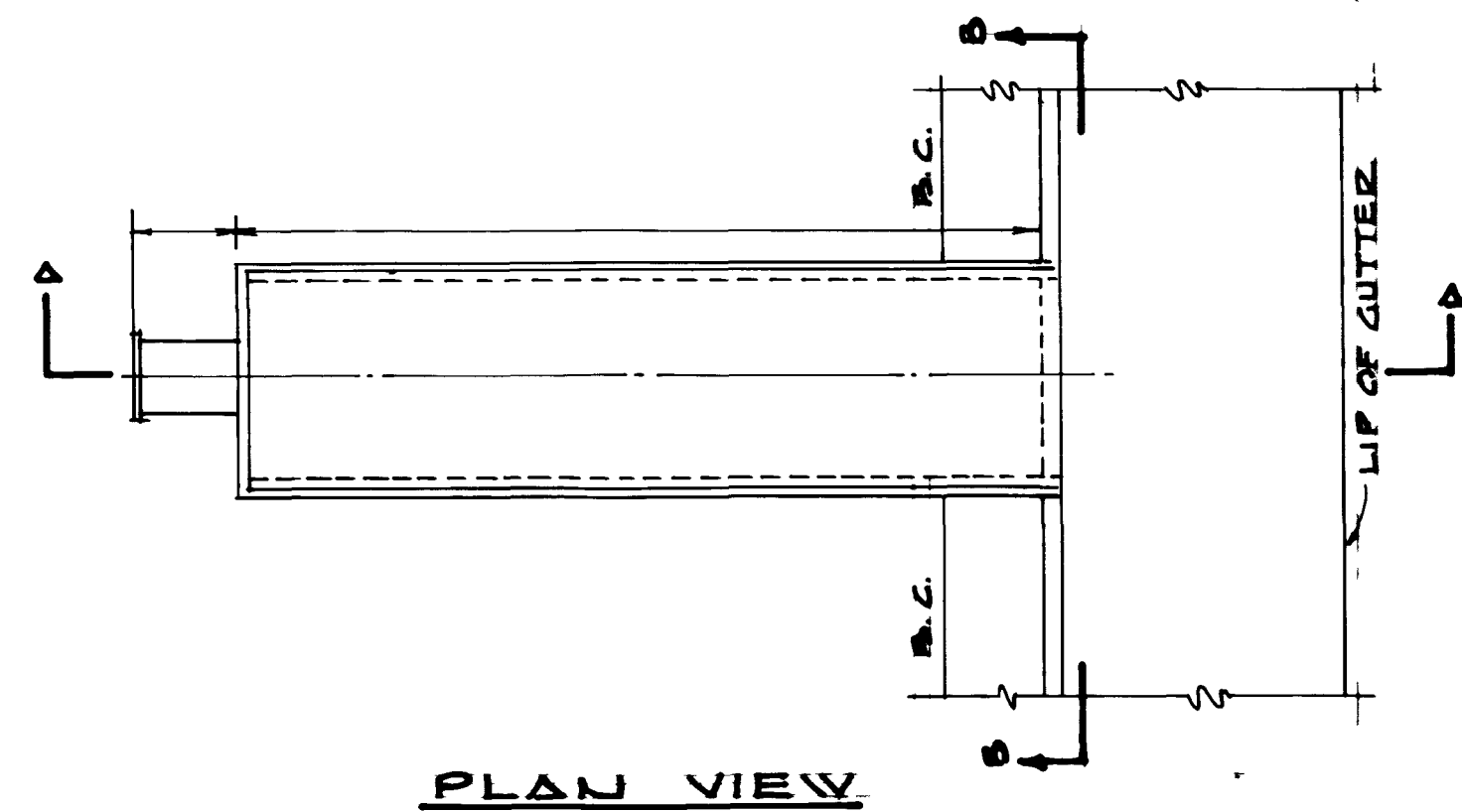
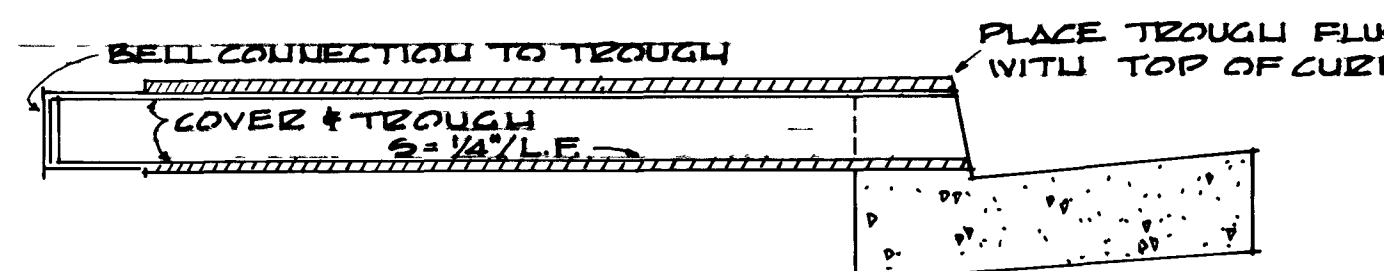


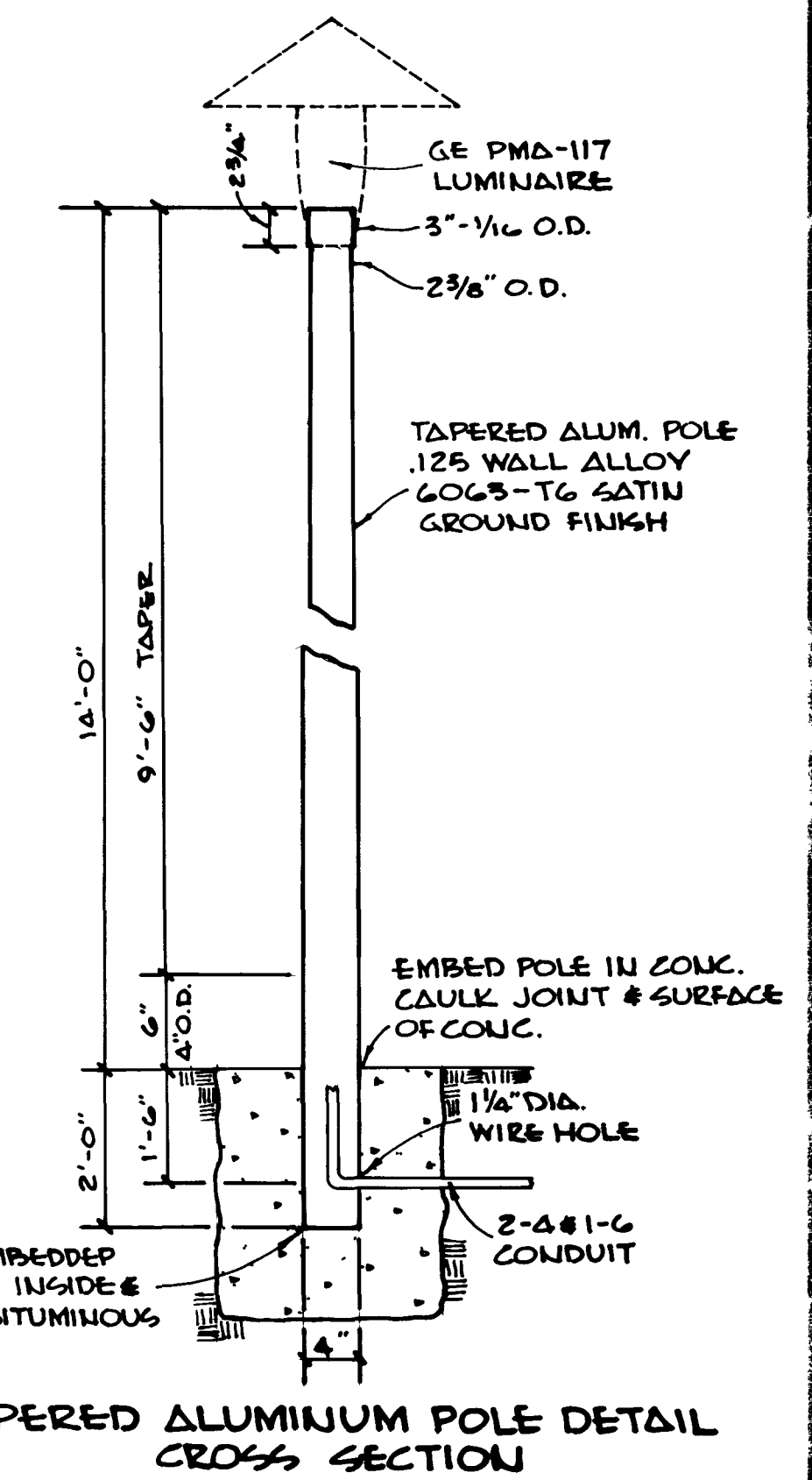
ROLL TYPE CURB DETAIL



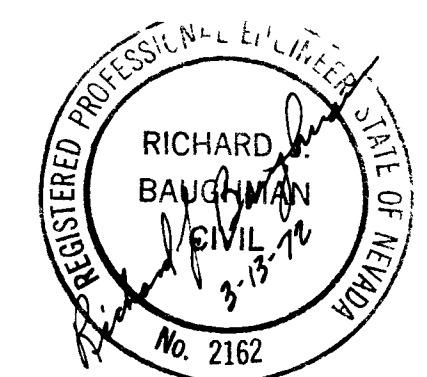
NEERLI FOUNDRY CO. NO. 2-4995B } OR APPROVED EQUAL
ALUMABA FOUNDRY CO. NO. A-2442



SEWER MANHOLE DETAIL CROSS SECTION



TAPERED ALUMINUM POLE DETAIL CROSS SECTION



| | | |
|--------|---------------------------|------------------|
| DATE | 13 MAR 72 | J.D.H. |
| DESIGN | BAUGHMAN, HAUGHI & TURNER | MINING ENGINEERS |
| DRAWN | J.P. BARKER | LAND SURVEYORS |
| CHECK | J.P. BARKER | LAND SURVEYORS |
| SCALE | AS SHOWN | |

CHARLESTON VILLAGE GREEN UNIT 1
SECTION 31, TOWNSHIP 20 SOUTH, RANGE 02 EAST, M.D.B. 14
CITY OF LAS VEGAS

SHEET 7 OF 7
PROJ. NO. 3074-10521

