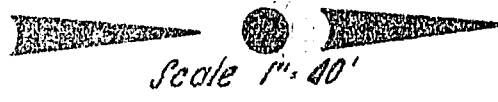
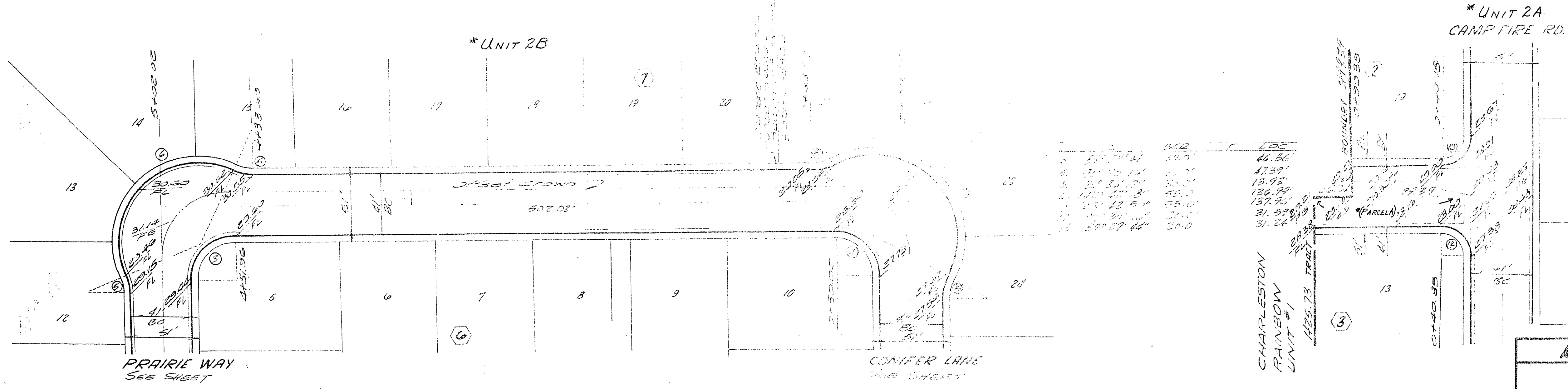


SUPERIMPOSED ON RECORD DOCUMENT:  
BUILT WITH PARCEL A-(PARCELA)

BILJAC STREET



APPROVALS		CHARLESTON-RAINBOW UNIT 2 STREET PLANS BILJAC STREET	
<i>[Signature]</i> City Engineer	Date	Submitted by: <i>[Signature]</i> Victor G. Kramelbauer, P.C.E. No. 1511	Sheet 5 of 12
<i>[Signature]</i> Field Engineer	4-20-66 Date	VOORHEIS-TRINDLE CO. OF NEW 958 A E. Sahara Ave., Suite 208, LV, NEV.	Dr. M.A. Des. P.

Divided into Units 2-A & 2-B 11-18-66  
 Initials: *[Signature]* City Engr., *[Signature]* City Engr.