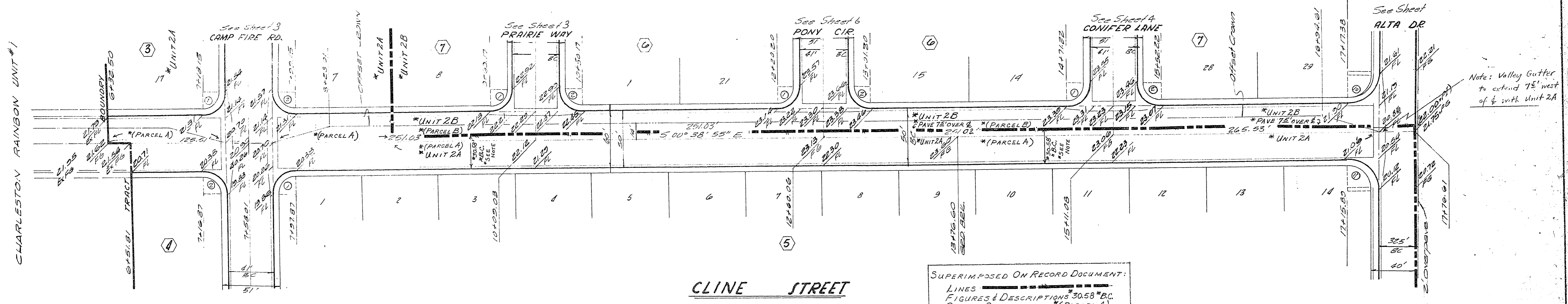


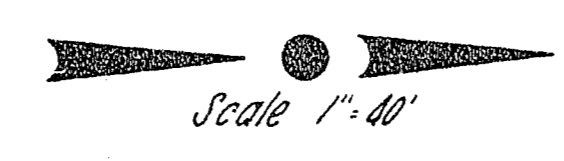
PROFILE SCALE:
HORIZ: 1"=40'
VERT: 1"=6'



CHARLESTON RAINBOW UNIT #1

CLINE STREET

Δ	BEARING	LENGTH	CHORD
1	89° 11' 23"	20.0'	21.13'
2	90° 48' 37"	20.0'	21.70'
10	89° 10' 40"	27.5'	42.80'
11	90° 49' 20"	27.5'	43.89'



SUPERIMPOSED ON RECORD DOCUMENT:
LINES
FIGURES & DESCRIPTIONS *30.58 *B.C.
PARCEL DESIGNATIONS *(PARCEL A)
NOTE:
EXTEND PAVING ON CLINE STREET,
WHERE PARTIAL PAVING OCCURS,
TO 38.50' FROM BACK CURB (1.92'
OVER PAVING). OVER PAVING TO
BE CUT WHEN STREET PAVING
IS COMPLETED (NOT INCLUDED
IN BOND QUANTITIES)

APPROVALS		CHARLESTON RAINBOW UNIT 2 STREET PLANS CLINE STREET	
<i>[Signature]</i> City Engineer	5/23/66 Date	Submitted by: <i>[Signature]</i> Victor E. Kramelbauer, R.C.E. No. 1511	Sheet 2 of 12
<i>[Signature]</i> Field Engineer	4-28-66 Date	VOORHEIS-TRINDLE CO. OF NEV. 953 A E. Sahara Ave., Suite 208, C.V. Nev.	Dr. Des.

Divided into Units 2-A & 2-B 11-18-66