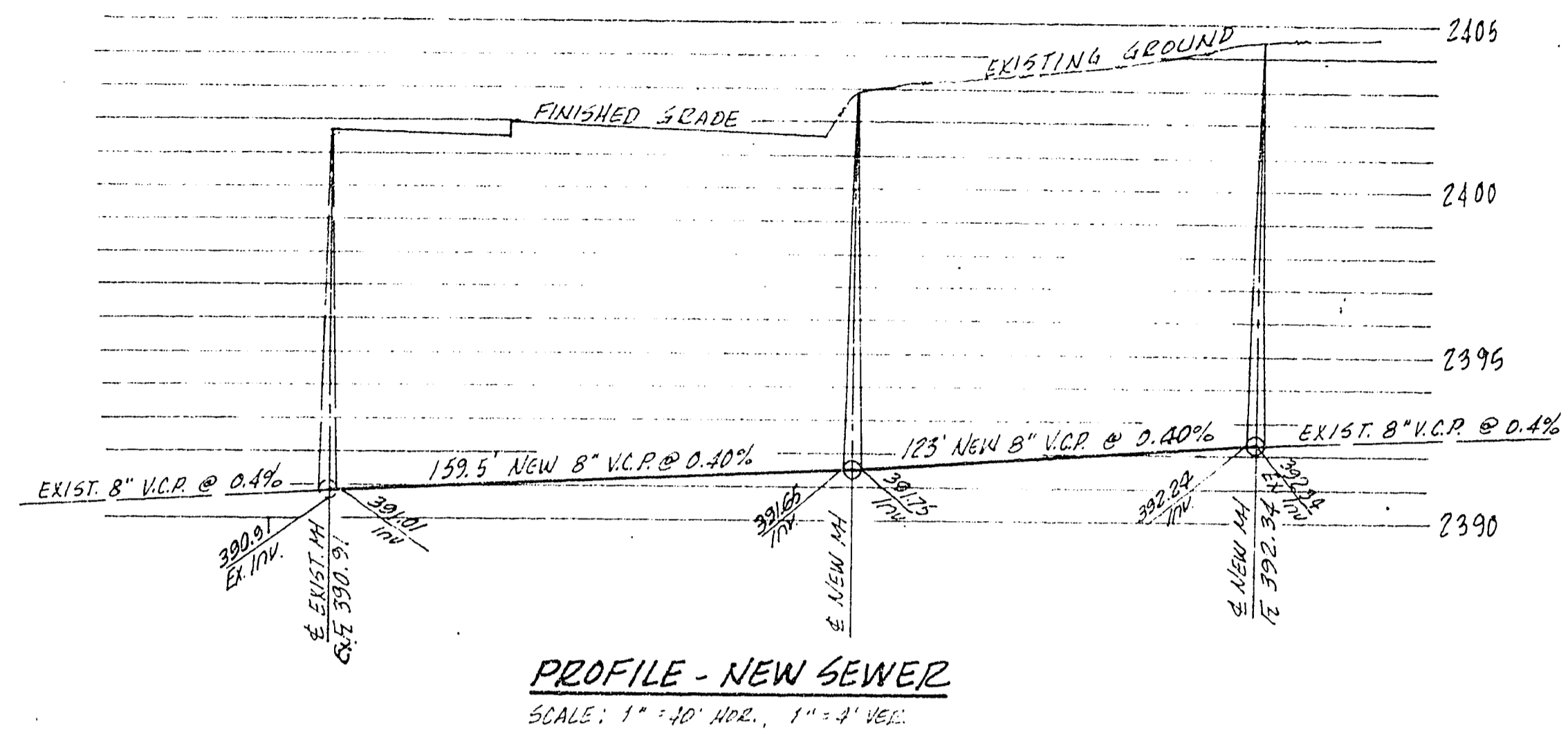
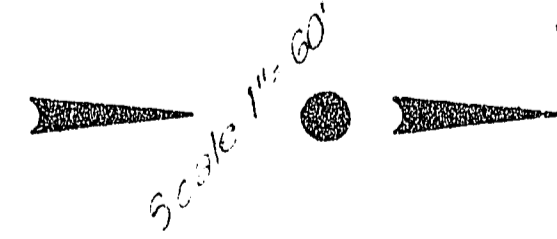


QUANTITIES

8" V.C.P. MAIN	286	L.F.
MANHOLES	2	EA.
8" x 4" V.C.P. WYES	2	EA.
4" V.C.P. LATERALS	320	L.F.
CONCRETE PLUGS	4	EA.

NOTES:
 All sewer mains for this subdivision are existing.
 All wyes for lots are existing. Contractor to verify & locate.
 4" V.C. laterals to be constructed as shown (7 required).
 House services shall comply with the Western Plumbing Code
 as to distance separations. All houses to be sewerd individually
 as per Section 313 of Uniform Plumbing Code.
 See Sheet 1 for details on trenches.
 For sewer profiles, see outfall plans for Charleston Rainbow 6-A
 Drwg. No. 307y-1055-6A, sheet 17 of 17



PROFILE - NEW SEWER
 SCALE: 1" = 40' HOR., 1" = 4' VERT.

APPROVED BY:
 [Signature] 12/11/69
 Supl. of Sanitation Date
 [Signature] 12-12-69
 Las Vegas City Engineer Date
 [Signature] 12-10-69
 Field Engineer Date

VOORHEIS-TRINDLE CO. OF NEVADA 2809 PARADISE ROAD LAS VEGAS, NEV.	
CHARLESTON RAINBOW UNIT 6-D MASTER SEWER PLAN	
AS BUILT "Y" LOCATIONS	
Submitted by	Sheet
Victor G. Krametsbauer P.C.E. 1511 Date	4A
	of 5

