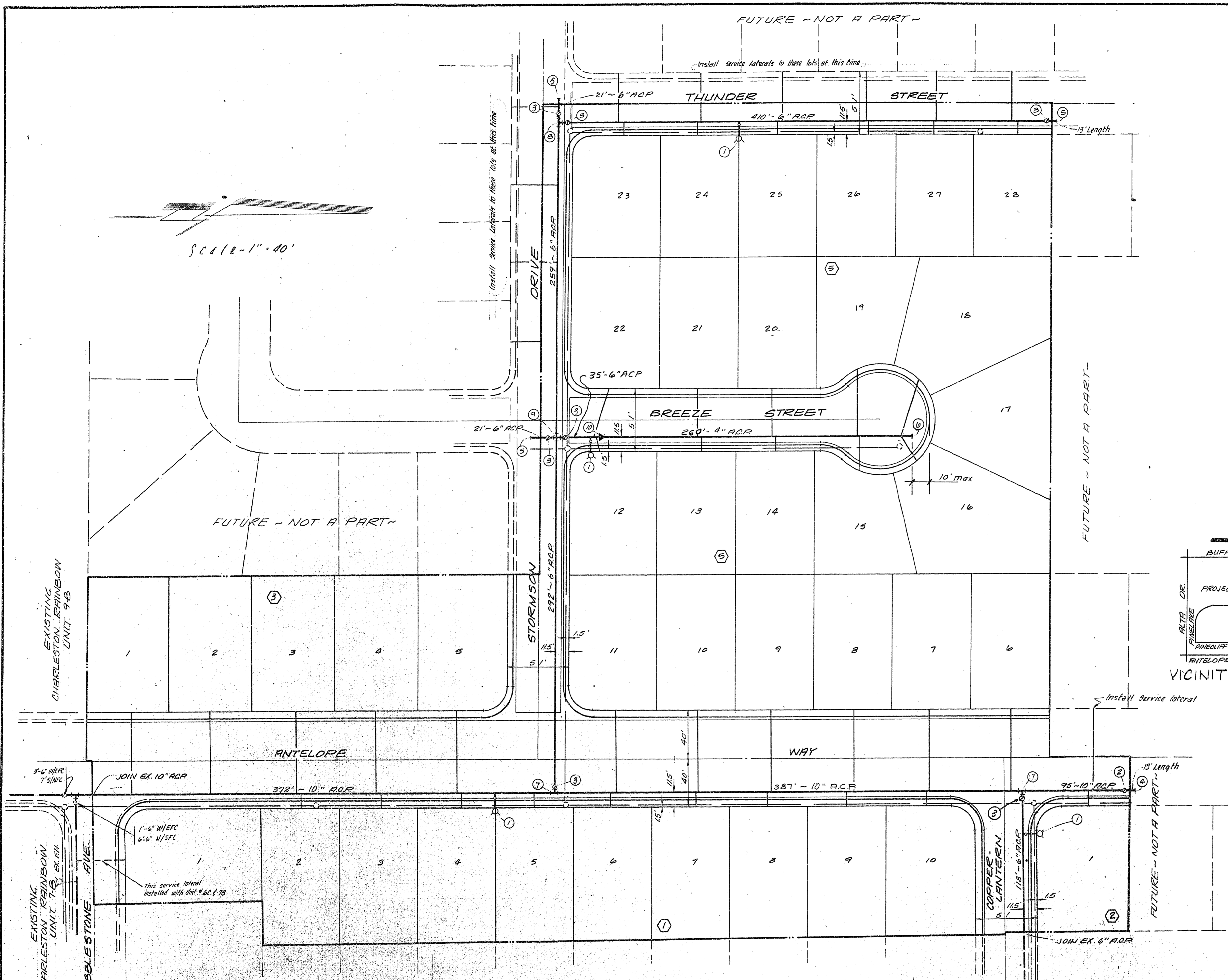
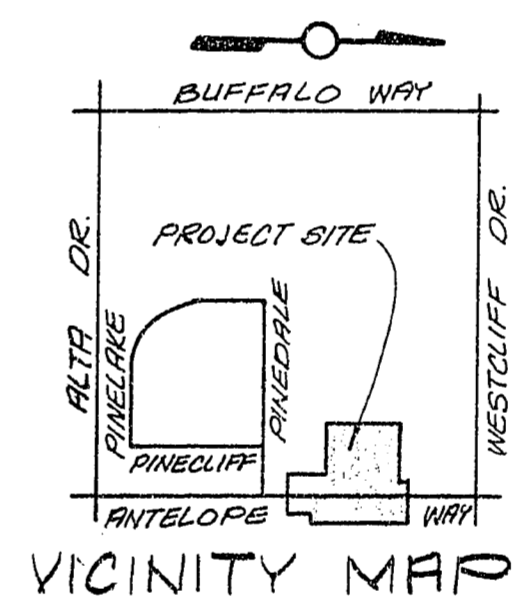


Scale 1" = 40'



- GENERAL NOTES**
1. ALL WORK TO CONFORM TO LAS VEGAS VALLEY WATER DISTRICT (LVVWD) STANDARD SPECIFICATIONS 5-1
  2. ALL WORK EXCEPT AS MODIFIED HEREON SHALL BE DONE IN ACCORDANCE WITH CLARK COUNTY STANDARD SPECIFICATIONS.
  3. NOTICE TO BE GIVEN THE ENGINEERING DEPT. OF THE LVVWD 48 HOURS PRIOR TO ACTUAL CONSTRUCTION.
  4. CONTRACTOR TO PROVIDE THRUST BLOCKS AS REQUIRED
  5. SERVICE SADDLES OR TAPPED COLLARS WILL BE REQUIRED ON ALL SERVICES.
  6. ALL LINES TO BE PRESURE TESTED TO 200 PSI.
  7. ALL FLANGED FITTINGS TO BE COATED WITH EC-244 AND WRAPPED WITH 6 MIL THICK POLYETHYLENE, 2 LAYERS
  8. ALL VALVE BOXES SHALL HAVE CONC. COLLARS AT SURFACE OF PAVED AREAS.
  9. NO OTHER UTILITY LINES MAY BE PLACED IN THE SAME TRENCH WITH WATER LINE.
  10. PARALLEL SEWER AND WATER LINES SHALL HAVE A MINIMUM OF 10 FOOT HORIZONTAL SEPARATION AND 3' FOOT MIN. VERTICAL SEPARATION.
  11. DEFLECTION ANGLE SHALL NOT EXCEED 5° PER 13 FOOT SECTION OF PIPE FOR PIPE SIZES SMALLER THAN 10" AND SHALL NOT EXCEED 3° FOR SIZES 10" AND LARGER
  12. ALL WATER VALVES SHALL BE OPERATED UNDER THE DIRECTION OF THE LVVWD.
  13. ALL WATER LINES TO BE FLUSHED TO A VELOCITY OF 10' PER SECOND.
  14. CONTRACTOR TO FURNISH AND INSTALL METER BOXES TO LVVWD SPECIFICATIONS.



APPROVED BY:

*[Signature]* DATE: 4/21/75  
 LAS VEGAS VALLEY WATER DIST.

*[Signature]* DATE: 4/25/75  
 CITY OF LAS VEGAS ENGINEER

*[Signature]* DATE: 8-25-75  
 CITY OF LAS VEGAS FIELD ENGINEER

*[Signature]* DATE: 8-15-75  
 CITY OF LAS VEGAS FIRE CHIEF

*[Signature]* DATE: 4/25/75  
 DISTRICT HEALTH DEPARTMENT

**LEGEND & QUANTITY ESTIMATE**

10" RCP WATER MAIN	867 LF.	④ 4" OAP/W/2" BLOWOFF	1 EA.
6" RCP WATER MAIN	1012 LF.	⑦ 10" X 10" X 6" TEE	2 EA.
4" RCP WATER MAIN	260 LF.	⑧ 6" X 6" X 6" TEE	1 EA.
STD. FIRE HYDRANT 1 1/4" dia.	4 EA.	⑨ 6" X 6" X 6" X 6" CROSS	1 EA.
① 10" GATE VALVE	1 EA.	⑩ 6" X 4" REDUCER	1 EA.
② 6" GATE VALVE	7 EA.	⑪ 3/4" Service Meters by LVVWD	39 EA.
③ 10" CAP w/ Blowoff	1 EA.		
⑤ 6" CAP w/ Blowoff	3 EA.		

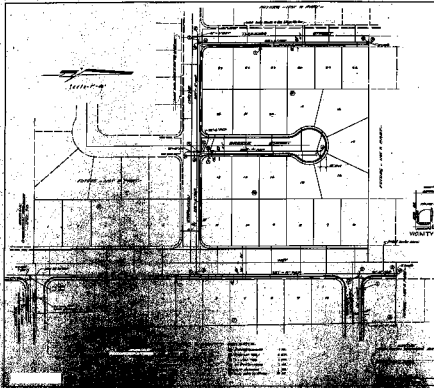
EXISTING "CHARLESTON RAINBOW UNIT 6-E"

SUBMITTED BY: *[Signature]* DATE: 5/19/75

CHARLEY E. JOHNSON  
 R.R.E. NEV. CERT. N° 3005

		CONSULTING ENGINEERS & PLANNERS 2204 PARADISE ROAD, LAS VEGAS, NEVADA 89103 (702) 735-0237	
<b>CHARLESTON RAINBOW UNIT 12-A</b> <b>MASTER WATER PLAN</b>			
SCALE: 1" = 40'	WO. NO. 1066-12A	DATE 4/28/75	SHEET 9
HORIZ:	DES.	REV.	
VERT:	CHK.	REV.	

SECTION - WEST OF CENTER



1. THE CITY OF WONTONA IS THE OWNER OF THE LAND SHOWN HEREON.
2. THE CITY OF WONTONA HAS THE RIGHT OF EASE OVER THE LAND SHOWN HEREON FOR THE PURPOSES OF THE CITY OF WONTONA.
3. THE CITY OF WONTONA HAS THE RIGHT OF EASE OVER THE LAND SHOWN HEREON FOR THE PURPOSES OF THE CITY OF WONTONA.
4. THE CITY OF WONTONA HAS THE RIGHT OF EASE OVER THE LAND SHOWN HEREON FOR THE PURPOSES OF THE CITY OF WONTONA.
5. THE CITY OF WONTONA HAS THE RIGHT OF EASE OVER THE LAND SHOWN HEREON FOR THE PURPOSES OF THE CITY OF WONTONA.
6. THE CITY OF WONTONA HAS THE RIGHT OF EASE OVER THE LAND SHOWN HEREON FOR THE PURPOSES OF THE CITY OF WONTONA.
7. THE CITY OF WONTONA HAS THE RIGHT OF EASE OVER THE LAND SHOWN HEREON FOR THE PURPOSES OF THE CITY OF WONTONA.
8. THE CITY OF WONTONA HAS THE RIGHT OF EASE OVER THE LAND SHOWN HEREON FOR THE PURPOSES OF THE CITY OF WONTONA.
9. THE CITY OF WONTONA HAS THE RIGHT OF EASE OVER THE LAND SHOWN HEREON FOR THE PURPOSES OF THE CITY OF WONTONA.
10. THE CITY OF WONTONA HAS THE RIGHT OF EASE OVER THE LAND SHOWN HEREON FOR THE PURPOSES OF THE CITY OF WONTONA.
11. THE CITY OF WONTONA HAS THE RIGHT OF EASE OVER THE LAND SHOWN HEREON FOR THE PURPOSES OF THE CITY OF WONTONA.
12. THE CITY OF WONTONA HAS THE RIGHT OF EASE OVER THE LAND SHOWN HEREON FOR THE PURPOSES OF THE CITY OF WONTONA.
13. THE CITY OF WONTONA HAS THE RIGHT OF EASE OVER THE LAND SHOWN HEREON FOR THE PURPOSES OF THE CITY OF WONTONA.
14. THE CITY OF WONTONA HAS THE RIGHT OF EASE OVER THE LAND SHOWN HEREON FOR THE PURPOSES OF THE CITY OF WONTONA.
15. THE CITY OF WONTONA HAS THE RIGHT OF EASE OVER THE LAND SHOWN HEREON FOR THE PURPOSES OF THE CITY OF WONTONA.
16. THE CITY OF WONTONA HAS THE RIGHT OF EASE OVER THE LAND SHOWN HEREON FOR THE PURPOSES OF THE CITY OF WONTONA.
17. THE CITY OF WONTONA HAS THE RIGHT OF EASE OVER THE LAND SHOWN HEREON FOR THE PURPOSES OF THE CITY OF WONTONA.
18. THE CITY OF WONTONA HAS THE RIGHT OF EASE OVER THE LAND SHOWN HEREON FOR THE PURPOSES OF THE CITY OF WONTONA.
19. THE CITY OF WONTONA HAS THE RIGHT OF EASE OVER THE LAND SHOWN HEREON FOR THE PURPOSES OF THE CITY OF WONTONA.
20. THE CITY OF WONTONA HAS THE RIGHT OF EASE OVER THE LAND SHOWN HEREON FOR THE PURPOSES OF THE CITY OF WONTONA.



APPROVED BY:

*[Signature]* \_\_\_\_\_

*[Signature]* \_\_\_\_\_

*[Signature]* \_\_\_\_\_

*[Signature]* \_\_\_\_\_

*[Signature]* \_\_\_\_\_

1.00	1.00
2.00	2.00
3.00	3.00
4.00	4.00
5.00	5.00
6.00	6.00
7.00	7.00
8.00	8.00
9.00	9.00
10.00	10.00

Y01-

CHUCKLETON ENGINEERING

1001 1/2

WONTONA, MONTANA

DATE: \_\_\_\_\_

BY: \_\_\_\_\_