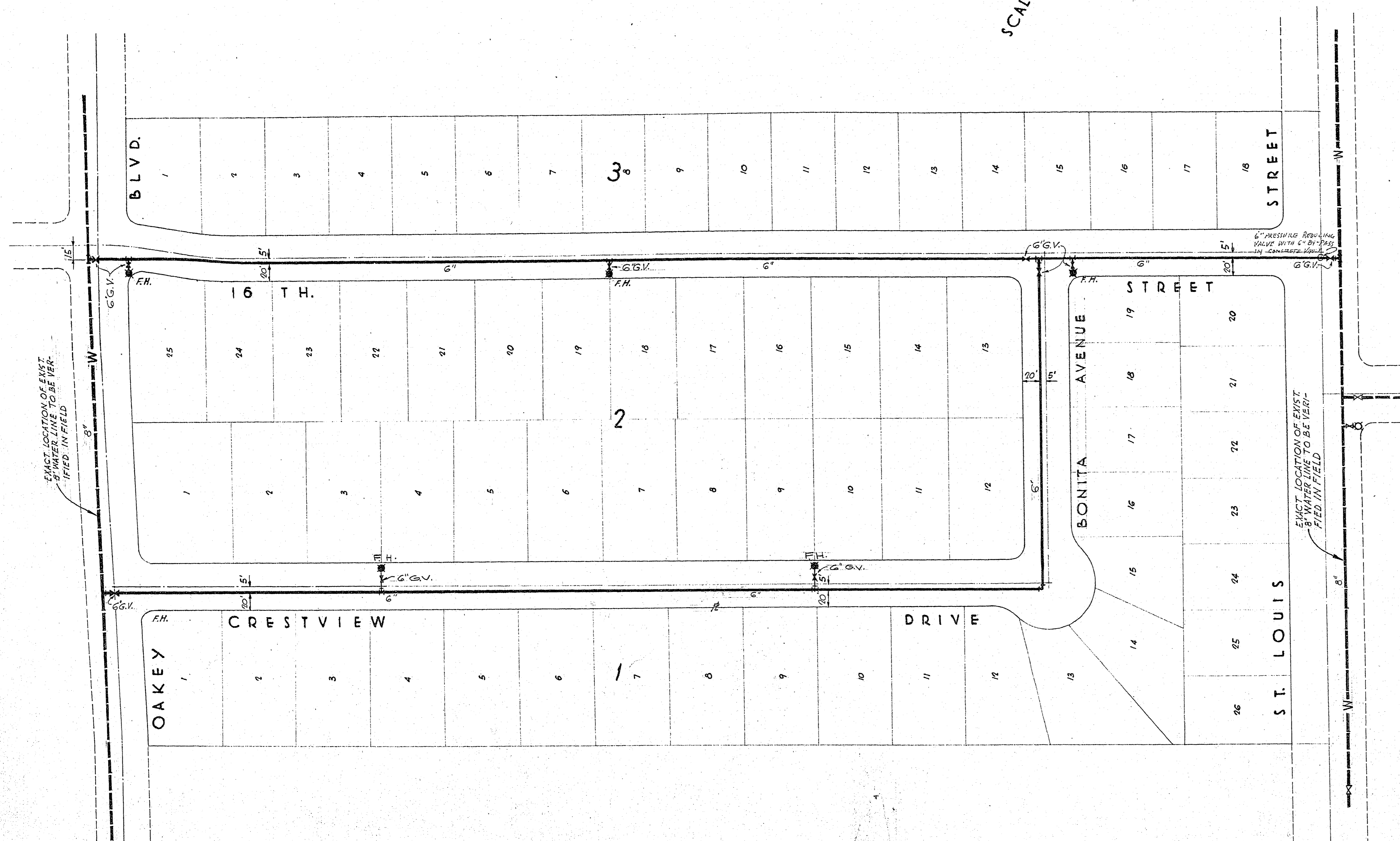


SCALE: 1" = 60'  
N



**ESTIMATE OF QUANTITIES**

ITEM NO.	DESCRIPTION	UNIT	QUANTITY
1	6" ASBESTOS CEMENT PIPE - CL. 150	LIN. FT.	2,695*
2	6" CAST IRON PIPE	LIN. FT.	108
3	6" GATE VALVES H.E.	EACH	11
4	FIRE HYDRANTS	EACH	6
5	6" CAST IRON TEE - AWWA	EACH	7
6	6" CAST IRON 90° BEND - AWWA	EACH	7
7	CONNECTIONS TO EXISTING 8" LINES	EACH	3

\* DOES NOT INCLUDE PIPE REQUIRED OUTSIDE OF TRACT BOUNDARY.

- GENERAL NOTES**
- MATERIALS AND INSTALLATION SHALL CONFORM TO THE STANDARDS OF THE CITY OF LAS VEGAS AND THE LAS VEGAS VALLEY WATER DISTRICT.
  - SERVICE CONNECTIONS SHALL BE PROVIDED TO EACH LOT WITHIN THE SUBDIVISION.

**LEGEND**

—W—	EXISTING WATER LINE
—	NEW WATER LINE
—X—	EXISTING GATE VALVE
—X—	NEW GATE VALVE
⊠	EXISTING FIRE HYDRANT
⊠	NEW FIRE HYDRANT
⊠	CAST IRON TEE - AWWA
⊠	90° CAST IRON BEND - AWWA

**CITY OF LAS VEGAS  
ENGINEERING DEPT.**

Approval of this plan by the City of Las Vegas, Nevada, does not relieve the Subdivider of responsibility for errors in calculation, design, or planning by the Subdivider's Engineer or Surveyor.

APPROVED AS TO DESIGN ONLY  
Contractor will be responsible for all details, dimensions and conformity to the design drawings.  
Date: 4-9-56  
By: S.C.H. E.Z.K.

City of Las Vegas, Nevada  
Office of the City Engineer  
Approved by: [Signature]  
Date: [Blank]

**APPROVALS**

by [Signature]  
LAS VEGAS VALLEY WATER DISTRICT  
DATE: 4-9-56  
[Signature]  
FIRE CHIEF - CITY OF LAS VEGAS  
DATE: 4-9-56

**PLAN**  
**WATER DISTRIBUTION**  
**CRESTVIEW ESTATES**  
CITY OF LAS VEGAS - NEVADA  
SCALE: AS SHOWN  
DATE: [Blank]  
PERLITER & SORING ENGINEERS  
448 SO. HILL LOS ANGELES, CALIF.  
DRWG. NO. [Blank]  
DATE: [Blank]