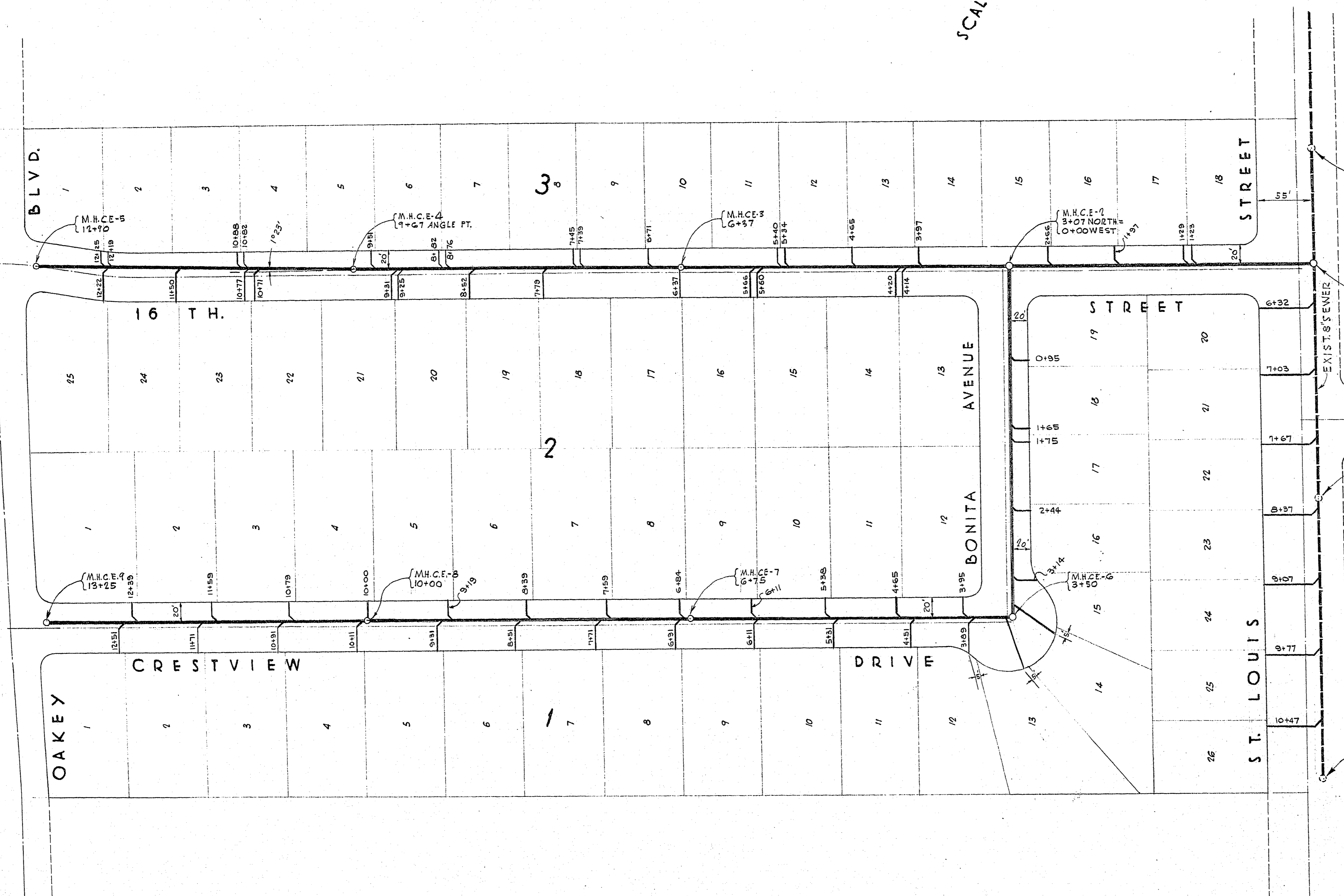


SCALE 1" = 60'
N



ESTIMATE OF QUANTITIES

DESCRIPTION	UNIT	QUANTITY
8" VITRIFIED CLAY PIPE	LIN. FT.	2615
4" VITRIFIED CLAY PIPE	LIN. FT.	1925
MANHOLES	EACH	9
SADDLE CONNECTIONS	EACH	7
HOUSE CONNECTIONS	EACH	69

EXIST. M.H. 4+70 INV. 63.13

NEW M.H.C.E. 5+57 WEST + 0+00 NORTH INV. 64.20

EXIST. M.H. 8+70 INV. 66.23

EXIST. M.H. 11+00 INV. 78.00

GENERAL NOTES

- ALL SEWERS SHALL BE 8" VITRIFIED CLAY PIPE.
- ALL HOUSE CONNECTIONS SHALL BE 4" VITRIFIED CLAY PIPE.
- HOUSE CONNECTIONS SHALL BE EXTENDED TO PROPERTY LINES.
- STATIONING OF HOUSE CONNECTIONS MAY BE ADJUSTED 2' ± TO FIT JOINTS IN SEWER PIPE.
- CONNECTIONS TO EXISTING SEWERS SHALL BE MADE WITH A SADDLE

CITY OF LAS VEGAS ENGINEERING DEPT.

Approval of this plan by the City of Las Vegas, Nevada, does not relieve the Subdivider of responsibility for errors in calculation, design, or planning by the Subdivider's Engineer or Surveyor.

APPROVED AS TO DESIGN ONLY
Contractor will be responsible for all details, dimensions and conformity to the design drawings.
Date 4-9-56
By: R.C.H. C.J.K.

APPROVALS

by *[Signature]*
DIRECTOR OF PUBLIC WORKS
DATE
[Signature]
SUPERINTENDENT OF SANITATION
DATE 4-10-56

PLAN
SEWERAGE SYSTEM
CRESTVIEW ESTATES
CITY OF LAS VEGAS, NEVADA

SCALE AS SHOWN	PERLITER & SORING ENGINEERS	DRWG. NO. 1
DATE	448 10 HILL LOS ANGELES	OF 2

307X-1180-1