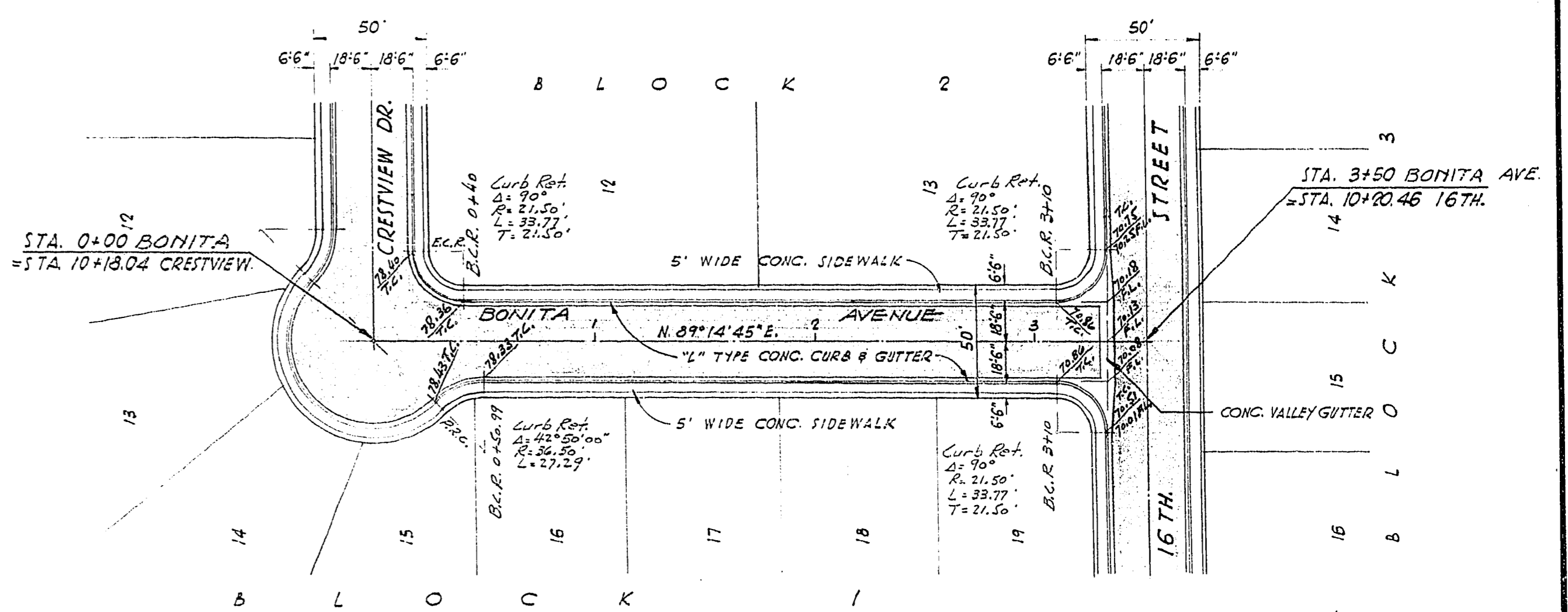


PLAN
 DATE: 4-8-56
 DRAWN BY: P. J. RAY
 CHECKED BY: G. W. WILSON
 NO. 107Y-1180-1

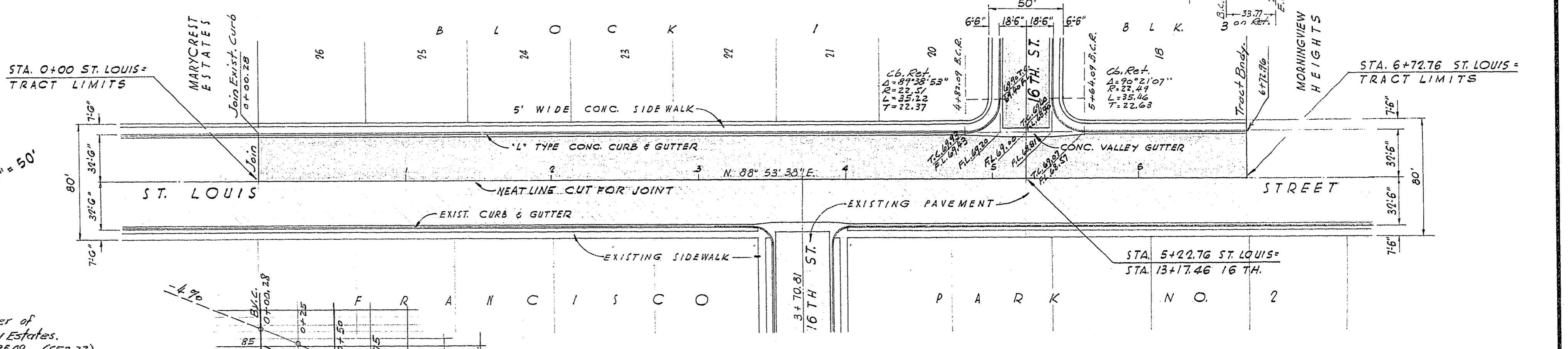
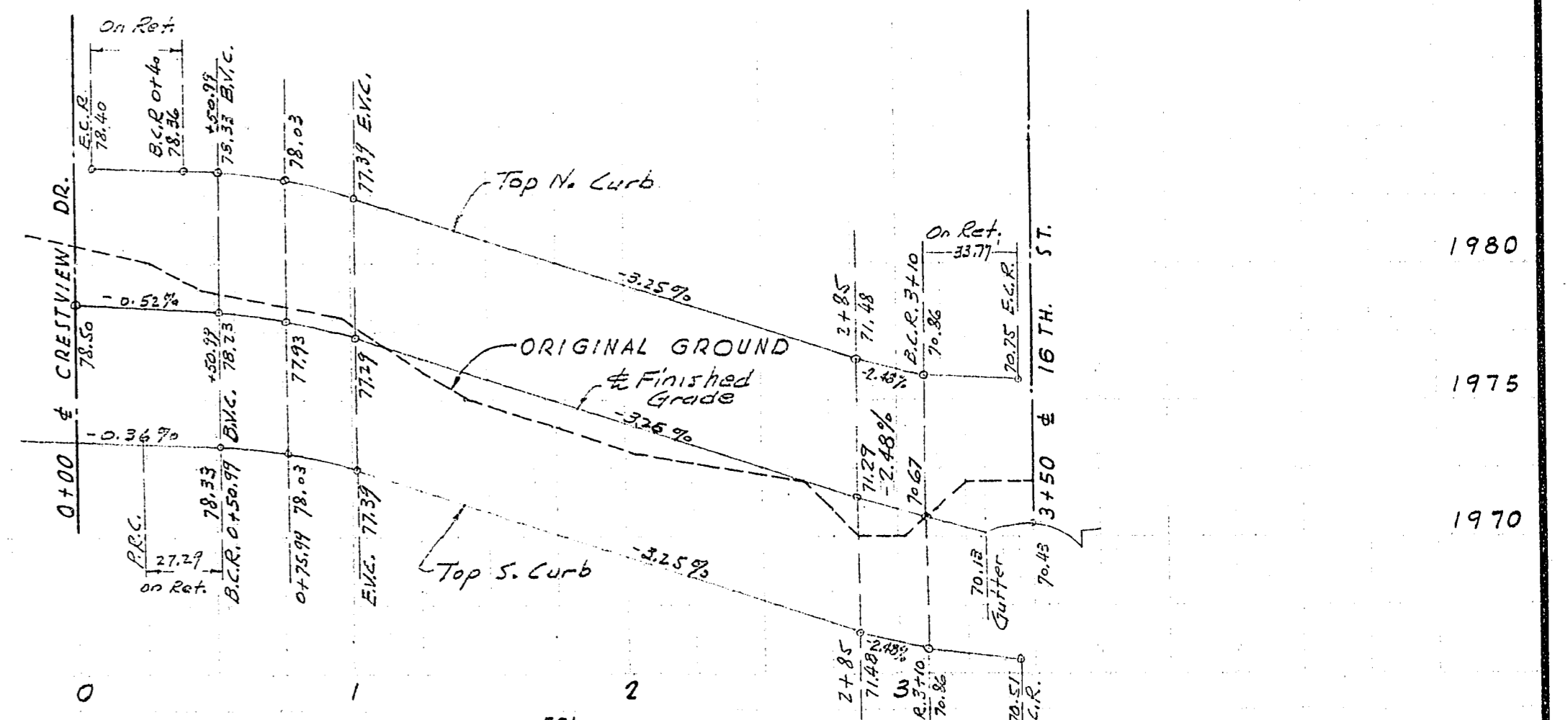
PROFILE
 DATE: 4-8-56
 DRAWN BY: P. J. RAY
 CHECKED BY: G. W. WILSON
 NO. 107Y-1180-1

SCALE: 1" = 50'

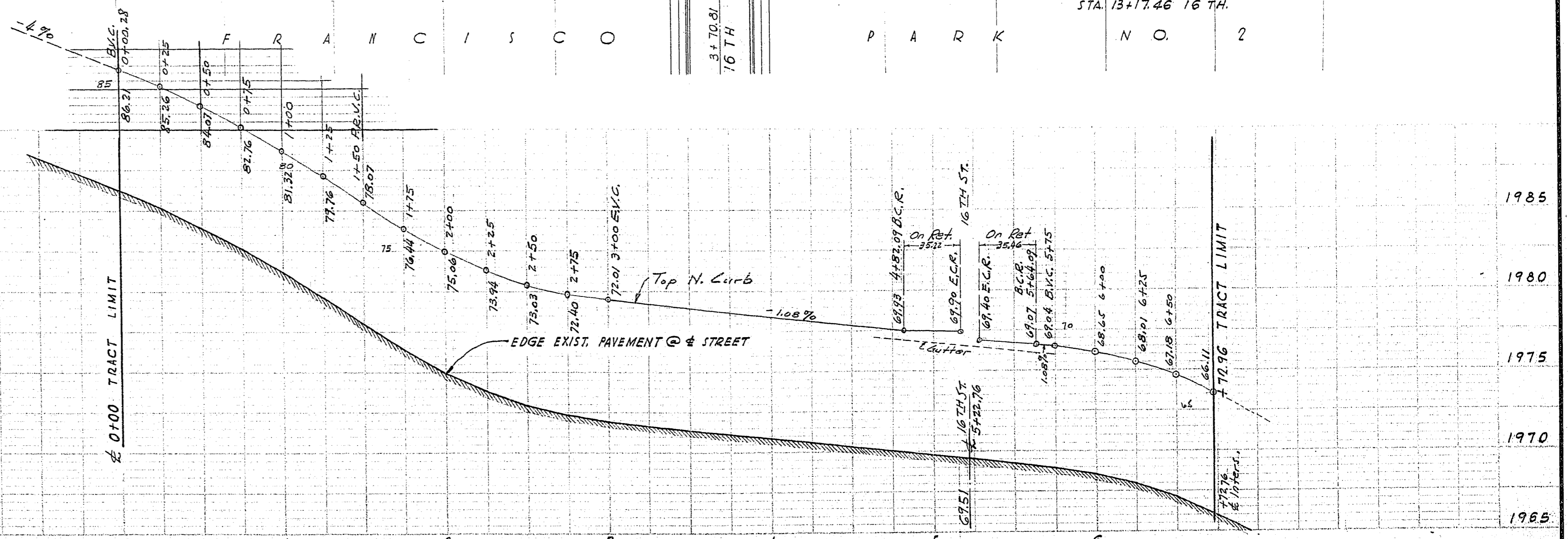
SCALE: 1" = 50'



B.M. Spl. in 3rd P.P. West of NE Corner of Francisco Park No. 2, approx. SE Corner of Crestview Estates. Elev. 1967.64 (SF2-30)



B.M. Spl. in P.P. - SW Corner of Crestview Estates. Elev. 1985.09 (SF2-32)



**CITY OF LAS VEGAS
 ENGINEERING DEPT.**

Approval of this plan by the City of Las Vegas, Nevada, does not relieve the Subdivider of responsibility for errors in calculation, design, or planning by the Subdivider's Engineer or Surveyor.

APPROVED AS TO DESIGN ONLY
 Contractor will be responsible for all details, dimensions and conformity to the design drawings.
 Date: 4-8-56
 By: P. J. RAY

City of Las Vegas, Nevada
 Office of the City Engineer

APPROVAL by: [Signature] GEORGE W. WILSON CITY ENGINEER OF LAS VEGAS DATE: 4-8-56	SCALE: HORIZ. 1" = 50' VERT. 1" = 5'	CRESTVIEW ESTATES BONITA AVE. AND ST. LOUIS ST.	DRWG. NO. 3 OF 3
---	--	--	------------------------

107Y-1180-1