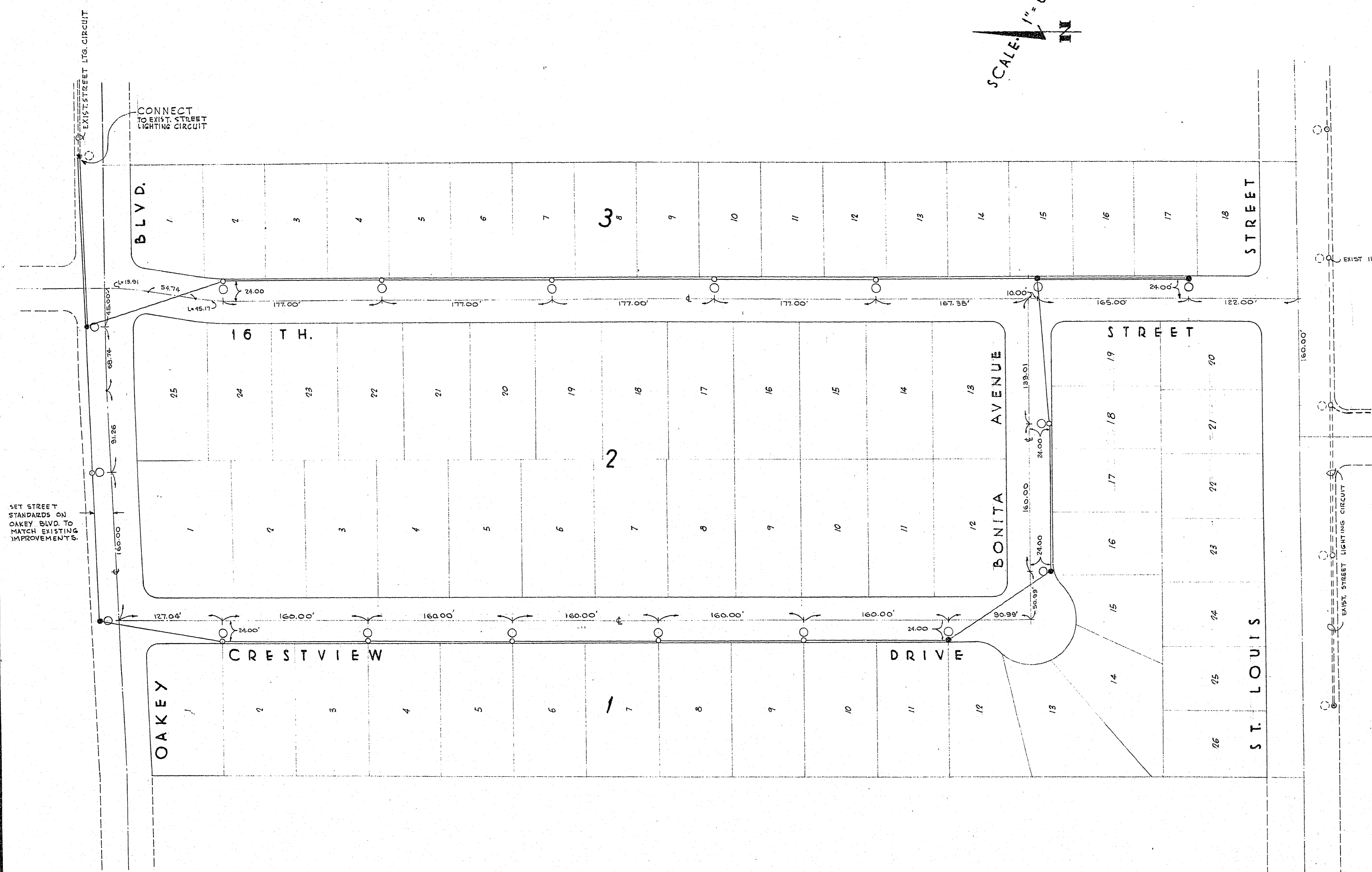


SCALE 1" = 60'  
N



**ESTIMATE OF QUANTITIES**

ITEM NO.	DESCRIPTION	UNIT	QUANTITY
1	11 GA. STREET LIGHT STANDARDS W/ LUMINAIRES	EACH	4 *
2	3 GA. STREET LIGHT STANDARDS W/ LUMINAIRES	EACH	15 *
3	WIRE #6 M.H.D. BARE COPPER	LBS.	330 *

\* BASED ON CONNECTION ALTERNATE "A"

**GENERAL NOTES**

1. MATERIALS AND INSTALLATION SHALL CONFORM TO CITY OF LAS VEGAS STANDARDS.

**LEGEND**

- STREET LIGHTING STANDARD • 11 GA. STEEL • UNION METAL DES. 400 CAT. # H 300 E 2X OR APPROVED EQUAL.
- STREET LIGHTING STANDARD • 3 GA. STEEL • UNION METAL DES. 400 CAT. # H 300 E 2X OR APPROVED EQUAL.
- LUMINAIRE • LINE MATERIAL CO. CAT. # 603800 C 16 4 TYPE III OR APPROVED EQUAL 1/2" SLIP FITTER & 2500 LUM. R 435 GROUP REFL. LAMP.
- AERIAL CONDUCTOR • #6 M.H.D. BARE COPPER.
- NO. 8 AWG. U.G. CABLE TYPE RR • 5 KV IN 1" GALV. WRAPPED CONDUIT.

**CITY OF LAS VEGAS ENGINEERING DEPT.**

Approval of this plan by the City of Las Vegas, Nevada, does not relieve the Subdivider of responsibility for errors in calculation, design, or planning by the Subdivider's Engineer or Surveyor.

APPROVED AS TO DESIGN ONLY  
Contractor will be responsible for all details, dimensions and conformity to the design drawings.  
Date: 4-10-56  
By: [Signature]

**APPROVALS**

by: [Signature]  
LAS VEGAS CITY ELECTRICIAN  
DATE: [Signature]  
SOUTHERN NEVADA POWER CO.  
DATE: 4-30-56  
[Signature]  
DIRECTOR OF PUBLIC WORKS  
DATE: [Signature]

P L A N  
STREET LIGHTING  
CRESTVIEW ESTATES  
CITY OF LAS VEGAS • NEVADA  
SCALE PERLITER & SORING DRWG. NO.  
AS SHOWN ENGINEERS 1  
DATE 448 SO. HILL LOS ANGELES OF 1

207Y-1180-2