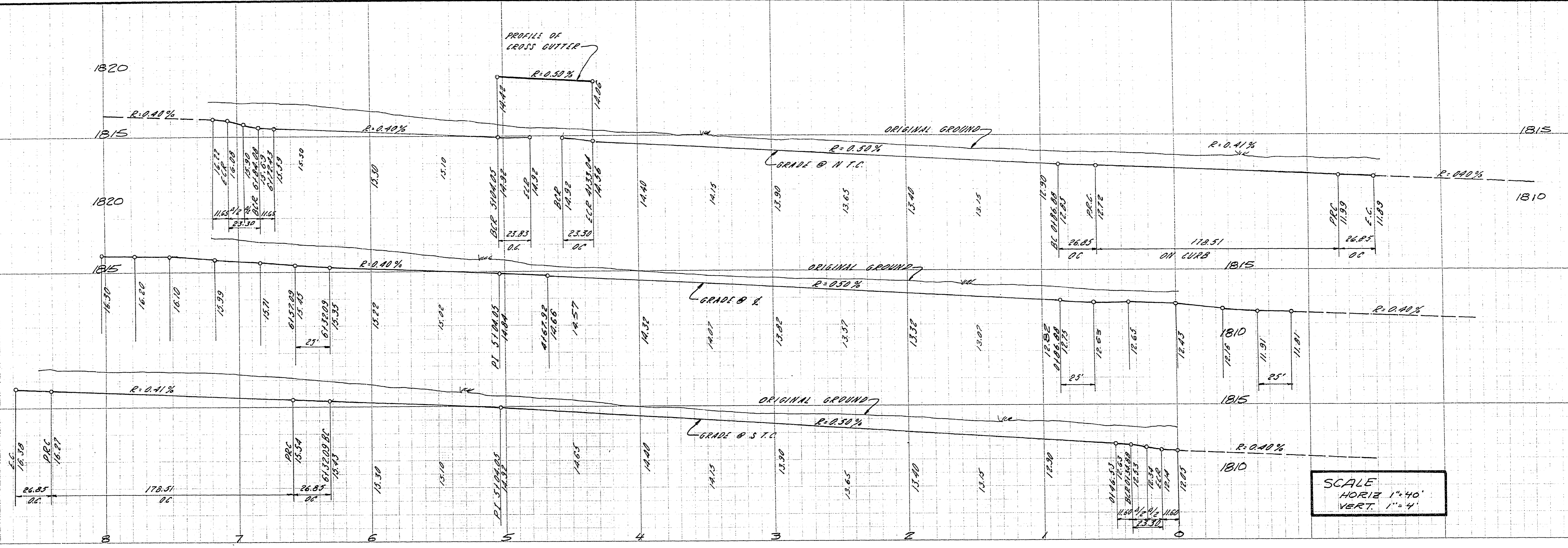
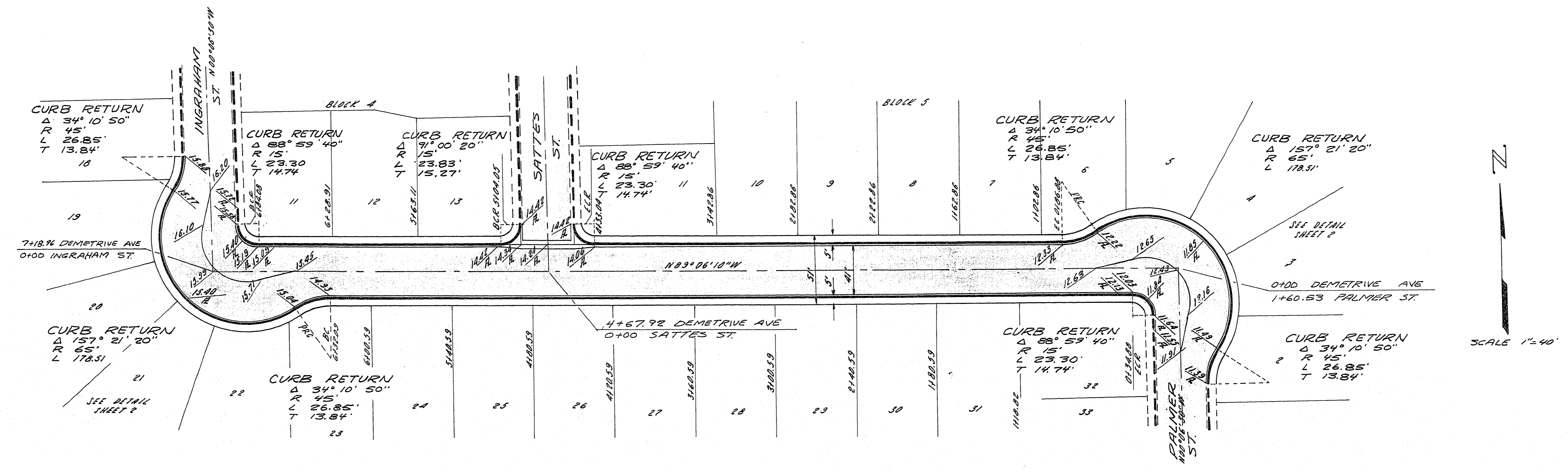


DATE: 11-24-62
 DRAWN BY: V.G. KRAMELBAUER
 CHECKED BY: J. H. ...



SCALE
 HORIZ 1"=40'
 VERT. 1"=4'

- CONSTRUCTION NOTES.**
1. CONST 4" CONC. SIDEWALK WITH 5" TYPE II BASE AS PER DETAIL SHEET NO 1.
 2. CONST TYPE 'L' CURB & GUTTER AS PER DETAIL SHEET NO 1.
 3. CONST STD VALLEY GUTTER AS PER DETAIL SHEET NO 1.
 4. CONST 2" ASPHALTIC CONCRETE OVER 4" TYPE II GRAVEL BASE OVER 6" TYPE I GRAVEL BASE AS PER DETAIL SHEET NO 1.



SCALE 1"=40'

DEMETRIVE AVE

NOTE: ALL STATIONING & DIMENSIONS ARE TO BACK OF CURB

SUBMITTED BY
 VICTOR G. KRAMELBAUER
 R.C.E. NO 1511
 APPROVED BY
 J. H. ...
 CITY ENGINEER R.C.E. 396

COLLEGE PARK
 22
 DEMETRIVE AVE

SHEET
 8
 OF 18

5-24-62

1074-1020-22