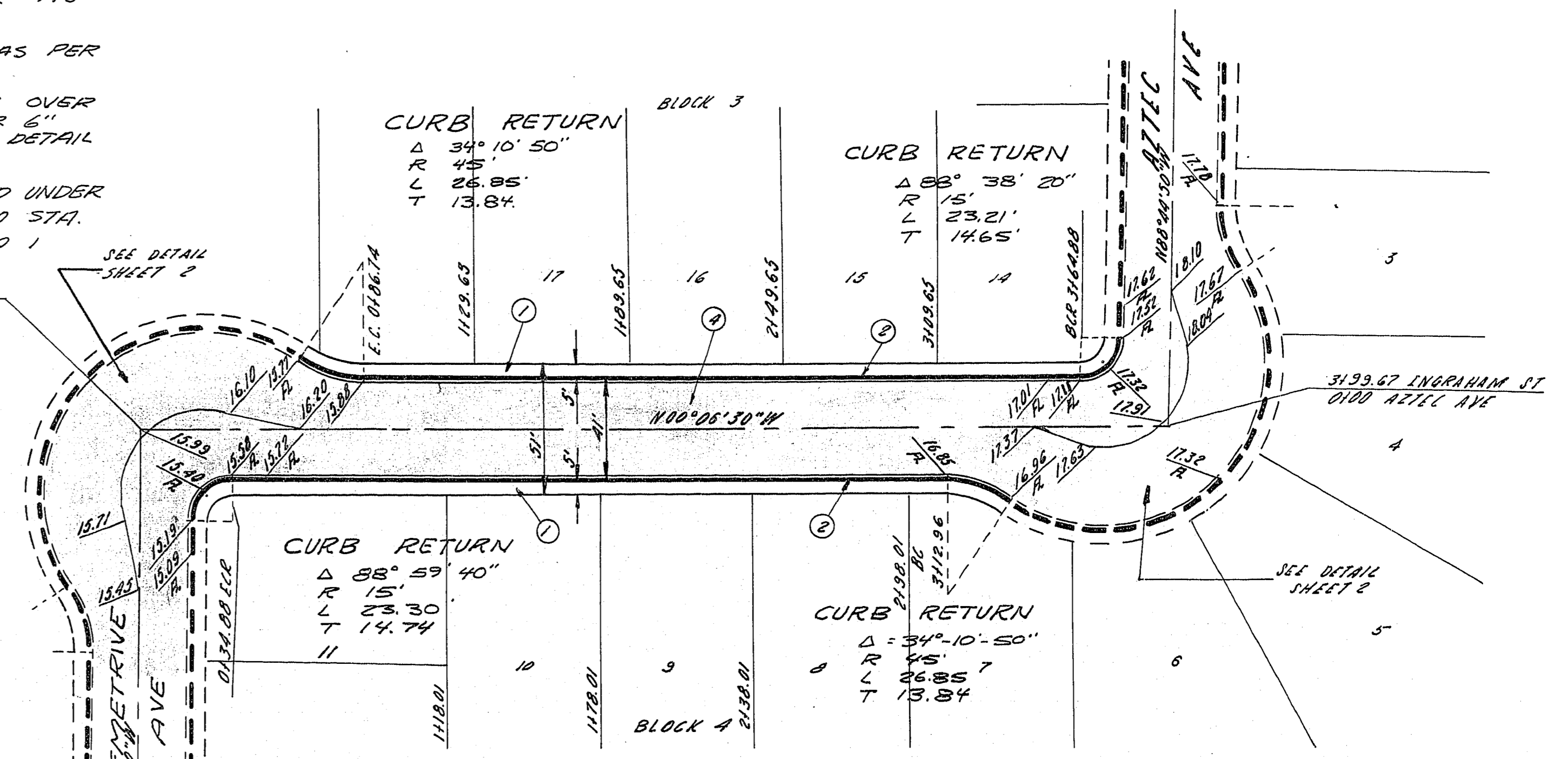
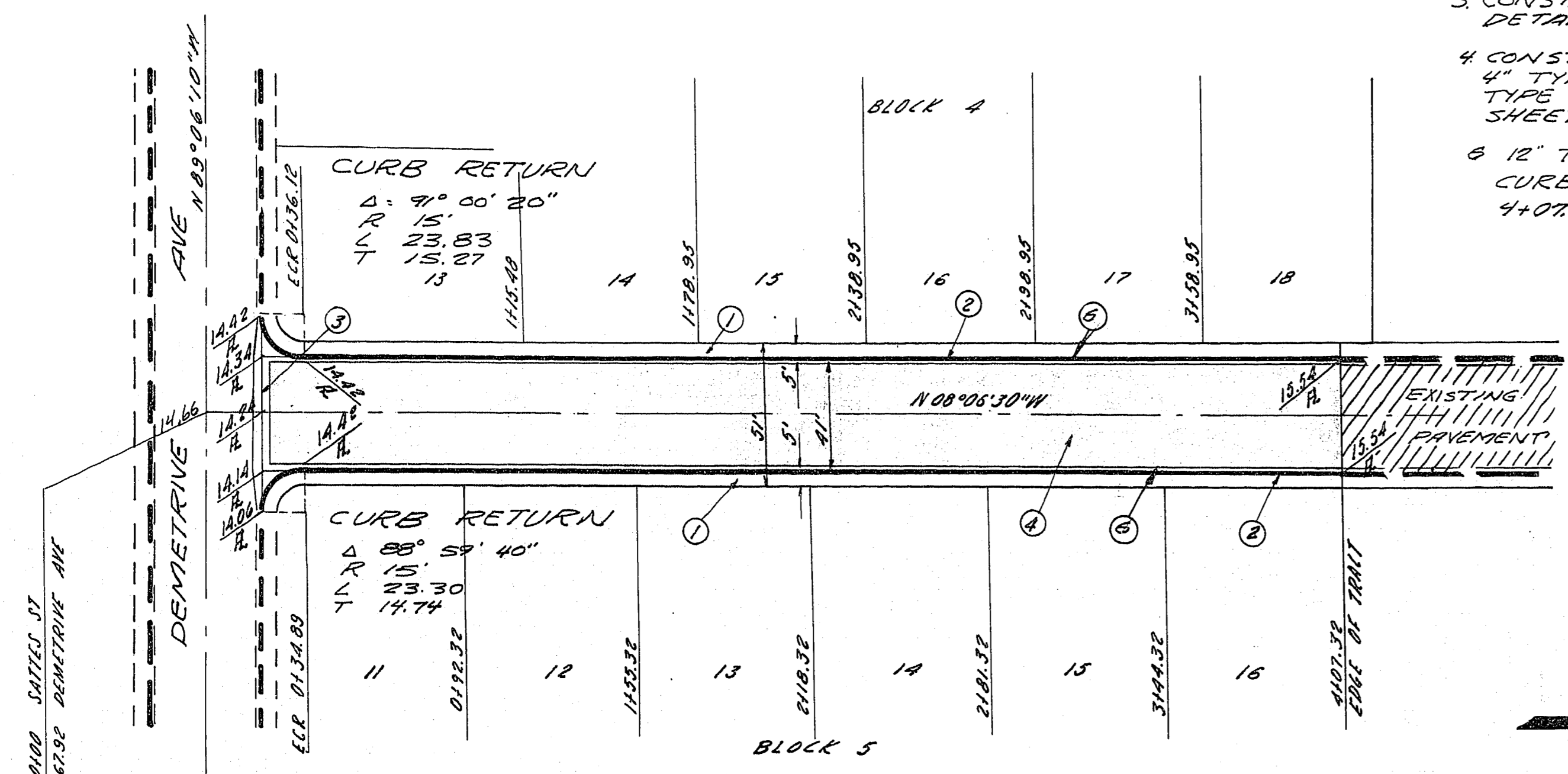


- CONSTRUCTION NOTES
1. CONST 4" CONC SIDEWALK WITH 5" TYPE II BASE AS PER DETAIL SHEET NO 1
 2. CONST TYPE "L" CURB & GUTTER AS PER DETAIL SHEET NO 1
 3. CONST STD VALLEY GUTTER AS PER DETAIL SHEET NO 1
 4. CONST 2" ASPHALTIC CONCRETE OVER 4" TYPE II GRAVEL BASE OVER 6" TYPE I GRAVEL BASE AS PER DETAIL SHEET NO 1
 5. 12" TYPE II GRAVEL BASE REQUIRED UNDER CURB & GUTTER STA. 0+34.89 TO STA. 4+07.38 AS PER DETAIL SHEET NO 1



SATTLES ST.

INGRAHAM ST.

NOTE: ALL STATIONING & DIMENSIONS ARE TO BACK OF CURB

SUBMITTED BY: <i>Victor G. Krametzbauer</i> VICTOR G. KRAMETZBAUER P.E. NO 1511 APPROVED BY: <i>[Signature]</i> CITY ENGINEER RCE # 396	COLLEGE PARK 22 SATTLES ST & INGRAHAM ST.	SHEET 7 OF 18
-----------------------------------------------------------------------------------------------------------------------------------------------------------	---------------------------------------------------------------	----------------------------

CR 5-24-62

1074 1130-22