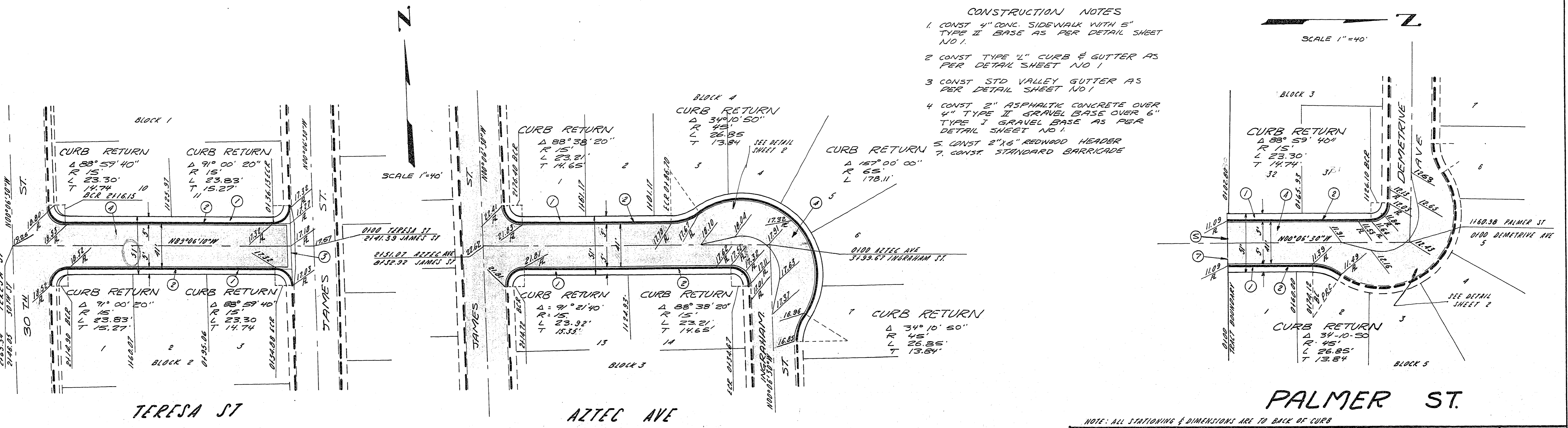


SCALE  
 HORIZ 1" = 40'  
 VERT 1" = 4'

- CONSTRUCTION NOTES
1. CONST 4" CONC. SIDEWALK WITH 5" TYPE II BASE AS PER DETAIL SHEET NO. 1.
  2. CONST TYPE "L" CURB & GUTTER AS PER DETAIL SHEET NO. 1.
  3. CONST STD VALLEY GUTTER AS PER DETAIL SHEET NO. 1.
  4. CONST 2" ASPHALTIC CONCRETE OVER 4" TYPE II GRAVEL BASE OVER 6" TYPE I GRAVEL BASE AS PER DETAIL SHEET NO. 1.
  5. CONST 2" X 6" REDWOOD HEADER
  6. CONST STANDARD BARRICADE
  7. CONST STANDARD BARRICADE



PALMER ST.

NOTE: ALL STATIONING & DIMENSIONS ARE TO BACK OF CURB

SUBMITTED BY Victor G. Krametbauer RCE No. 1511	<b>COLLEGE PARK</b> <b>22</b> TERESA, AZTEC, & PALMER ST.	SHEET <b>6</b> OF 18
APPROVED BY City Engineer RCE-376		

5-24-62

1074-4020-22