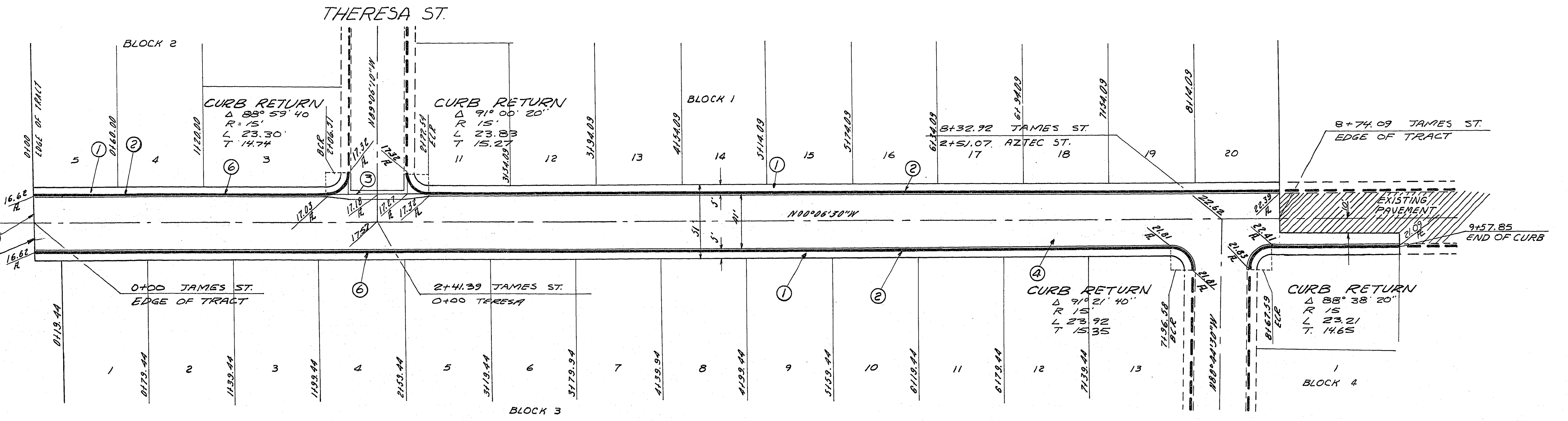


- CONSTRUCTION NOTES.**
1. CONST 4" CONC. SIDEWALK WITH 5" TYPE II BASE AS PER DETAIL SHEET NO 1
 2. CONST TYPE 2" CURB & GUTTER AS PER DETAIL SHEET NO 1
 3. CONST STD VALLEY GUTTER AS PER DETAIL SHEET NO 1
 4. CONST 2" ASPHALTIC CONCRETE OVER 4" TYPE II GRAVEL BASE OVER 6" TYPE I GRAVEL BASE AS PER DETAIL SHEET NO 1.
 5. CONST 2"x6" REDWOOD HEADER I.W.C. 1-31-63
 6. 12" TYPE II GRAVEL BASE REQUIRED UNDER CURB & GUTTER STA 0+00 TO STA 5+44.33 AS PER DETAIL SHEET NO 1
 7. CONST STANDARD BARRICADE



JAMES ST.

NOTE: ALL STATIONING & DIMENSIONS ARE TO BACK OF CURB

SUBMITTED BY
Victor G. Krametzbauer
 VICTOR G. KRAMETZBAUER
 RCE NO 1511

APPROVED BY
W. J. Taylor
 CITY ENGINEER RCE 396

COLLEGE PARK
22
 JAMES ST.

SHEET
5
 OF 18

APR 5-24-62

1074-1130-22