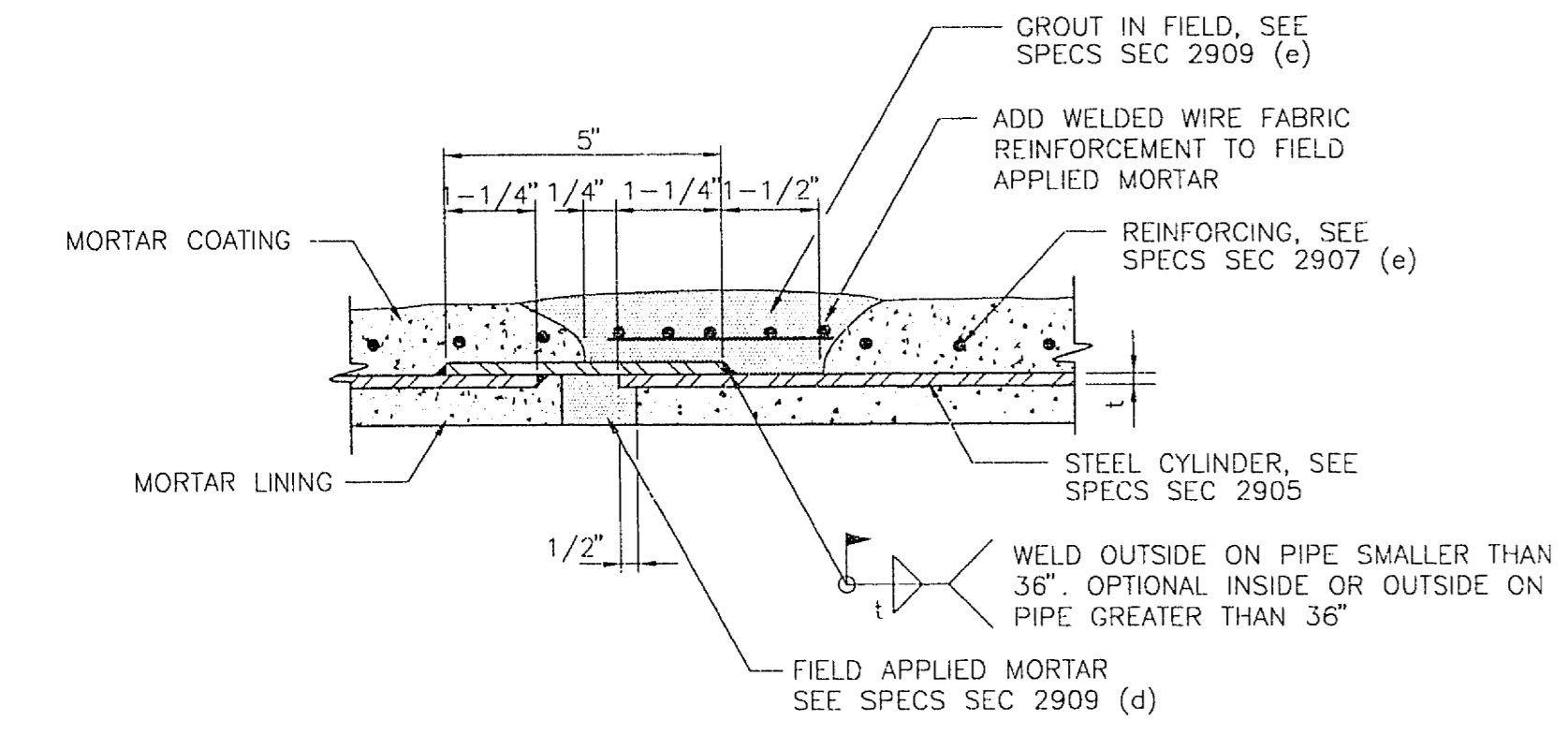
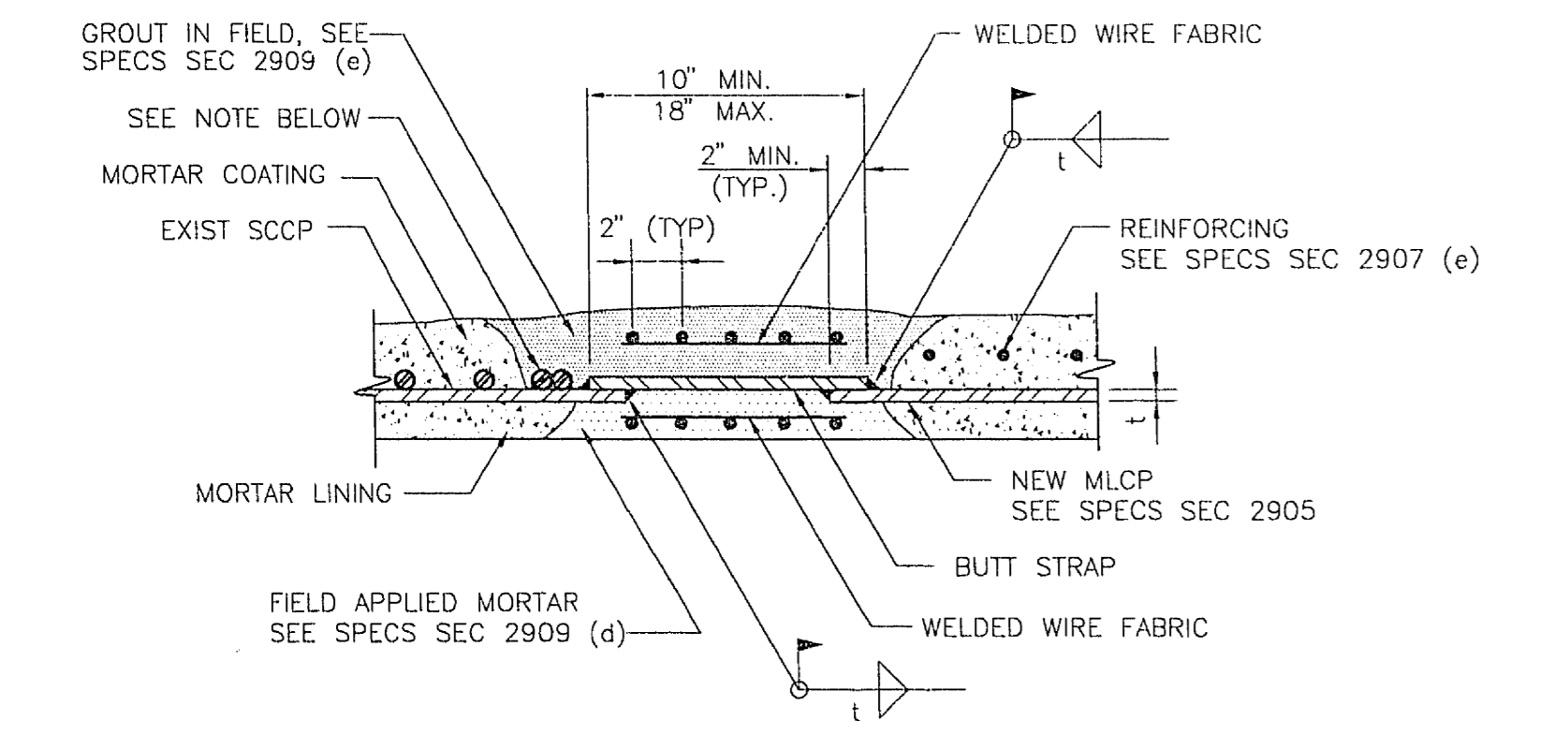


**LAP-WELDED SLIP JOINT  
ALTERNATE "A" FIELD WELDED** 1  
15  
NOT TO SCALE

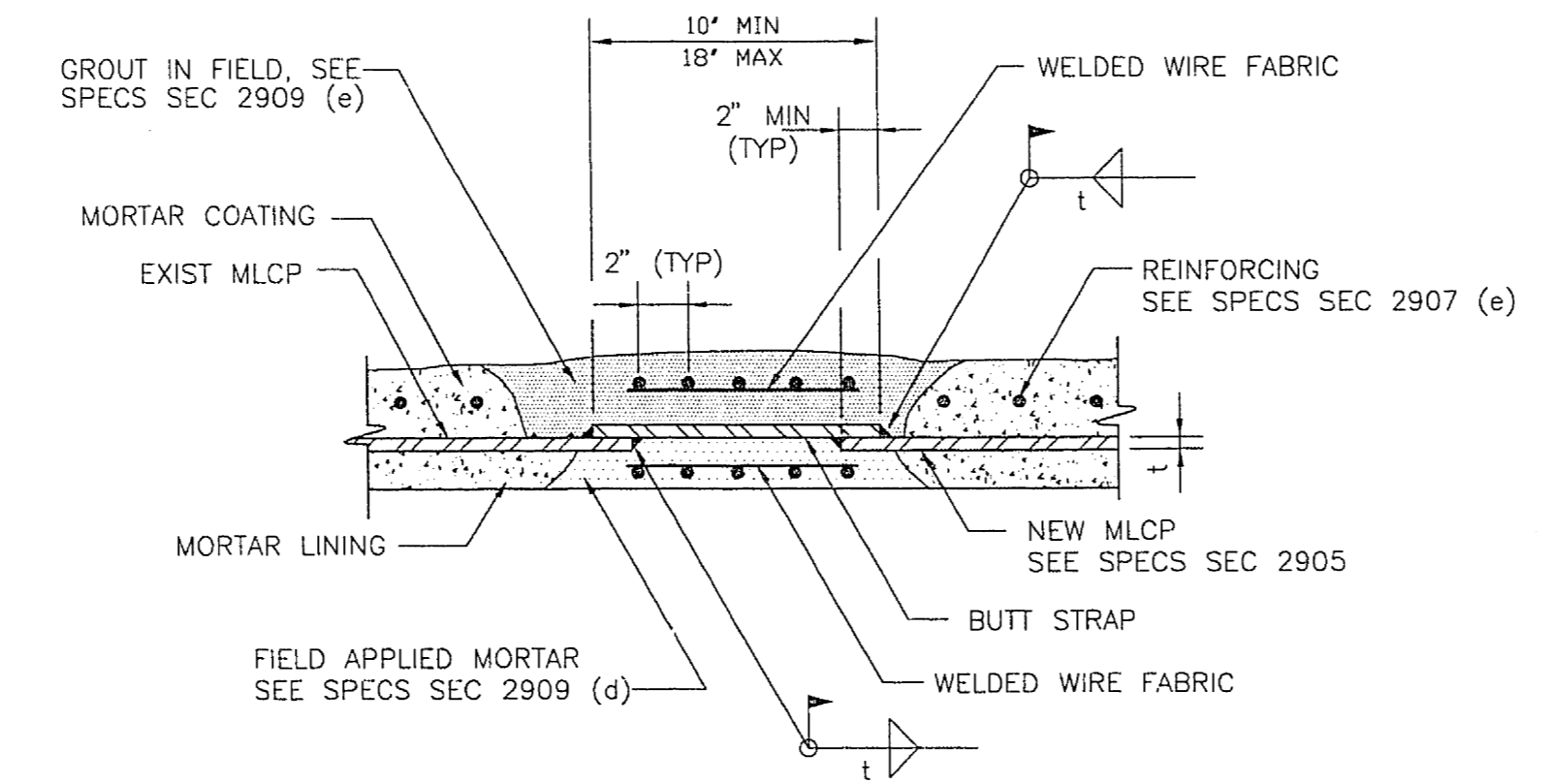


**LAP-WELDED SLIP JOINT  
ALTERNATE "B" FIELD WELDED** 4  
15  
NOT TO SCALE



**NOTE**  
BEFORE ANY CUT IS MADE TO THE EXISTING SSCP, TACK WELD THE EXISTING SPIRAL ROD WRAP OUTSIDE OF THE CUT AREA TO MAINTAIN TENSION, THEN CUT THE ROD WRAP AT APPROXIMATELY THE CENTER OF THE AREA TO BE REMOVED AND USING THE EXCESS ROD WRAP, TENSION 1-1/2 FULL OF THE ROD WRAP SNUGLY AROUND AND WELD TO THE CYLINDER PARALLEL TO WHERE THE CUT IN THE EXISTING SSCP IS TO BE MADE.

**BUTT STRAP JOINT AT CONNECTIONS  
TO EXISTING SSCP** 6  
15  
NOT TO SCALE



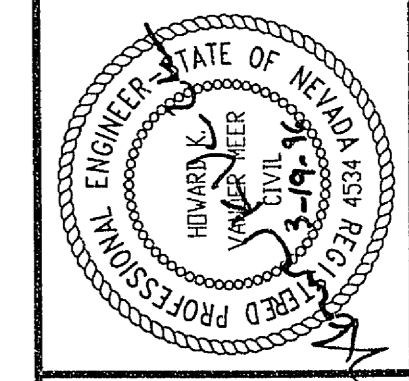
**BUTT STRAP JOINT AT CONNECTIONS  
TO EXISTING MLCP** 7  
15  
NOT TO SCALE

LAS VEGAS VALLEY WATER DISTRICT  
**G.C. WALLACE, INC.**  
Engineering/Architecture  
1555 SOUTH RAINBOW BLVD./LAS VEGAS, NEVADA 89102

VERIFY SCALE  
1/2" 0 1/2"  
BAR REPRESENTS ONE AND ONE-HALF INCHES ON ORIGINAL

3205 ZONE RESERVOIR INLET/OUTLET PIPELINE  
MORTAR LINED AND COATED STEEL PIPE JOINT DETAILS  
SCALE 1"=1'  
C:\DWG\3205\01\N001-DB.DWG Plot @ 03-15-96 1:00PM

DRAWN BY: BRACIA/ANGELA BRISAGER 09/95  
CHECKED BY: RON CHAPMAN 12/08/95  
RECOMMENDED BY: L. L. 4534 3-19-96  
HOWARD VANDER MEER R.P.E. NO. DATE  
ACCEPTED BY: R.P.E. NO. DATE



CONTRACT NUMBER  
**770**  
DRAWING NUMBER DB  
SHEET 15 OF 19



INSULATION JOINT  
 AT POINT OF FINAL RELEASE  
 OF CABLE



INSULATION JOINT  
 AT POINT



INSULATION JOINT AT CONNECTION  
 OF CABLE TO  
 OTHER CABLE

INSULATION JOINT AT CONNECTION  
 OF CABLE TO  
 OTHER CABLE



INSULATION JOINT AT CONNECTION  
 OF CABLE TO  
 OTHER CABLE

THE BUREAU OF REPAIRS  
 U.S. NAVY  
 1950  
 770  
 1950