

940401

13-2-130

01014

ANGEL COURT CONDOMINIUMS

A PORTION OF THE SOUTHWEST ONE-QUARTER (SW 1/4) OF THE SOUTHWEST ONE-QUARTER (SW 1/4) OF SECTION 33, TOWNSHIP 20 SOUTH, RANGE 60 EAST, M.D.M., CITY OF LAS VEGAS, CLARK COUNTY, NEVADA.

SURVEYOR'S CERTIFICATE:

I, BARTLETT C DALTON, A PROFESSIONAL LAND SURVEYOR, REGISTERED IN THE STATE OF NEVADA, CERTIFY THAT THE MONUMENTS ARE OF THE CHARACTER SHOWN AND OCCUPY THE POSITIONS INDICATED HEREON.

BARTLETT C DALTON
PROFESSIONAL LAND SURVEYOR
NEVADA CERTIFICATE NO. 10160



EXIST. FIRE STATION
APN 450-180-006

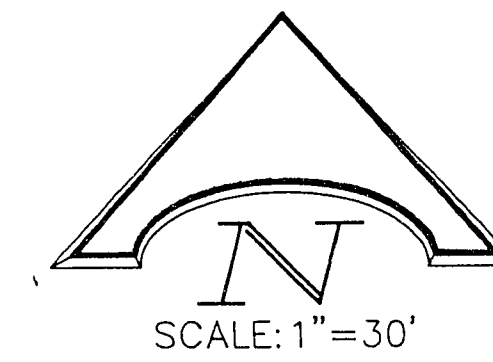
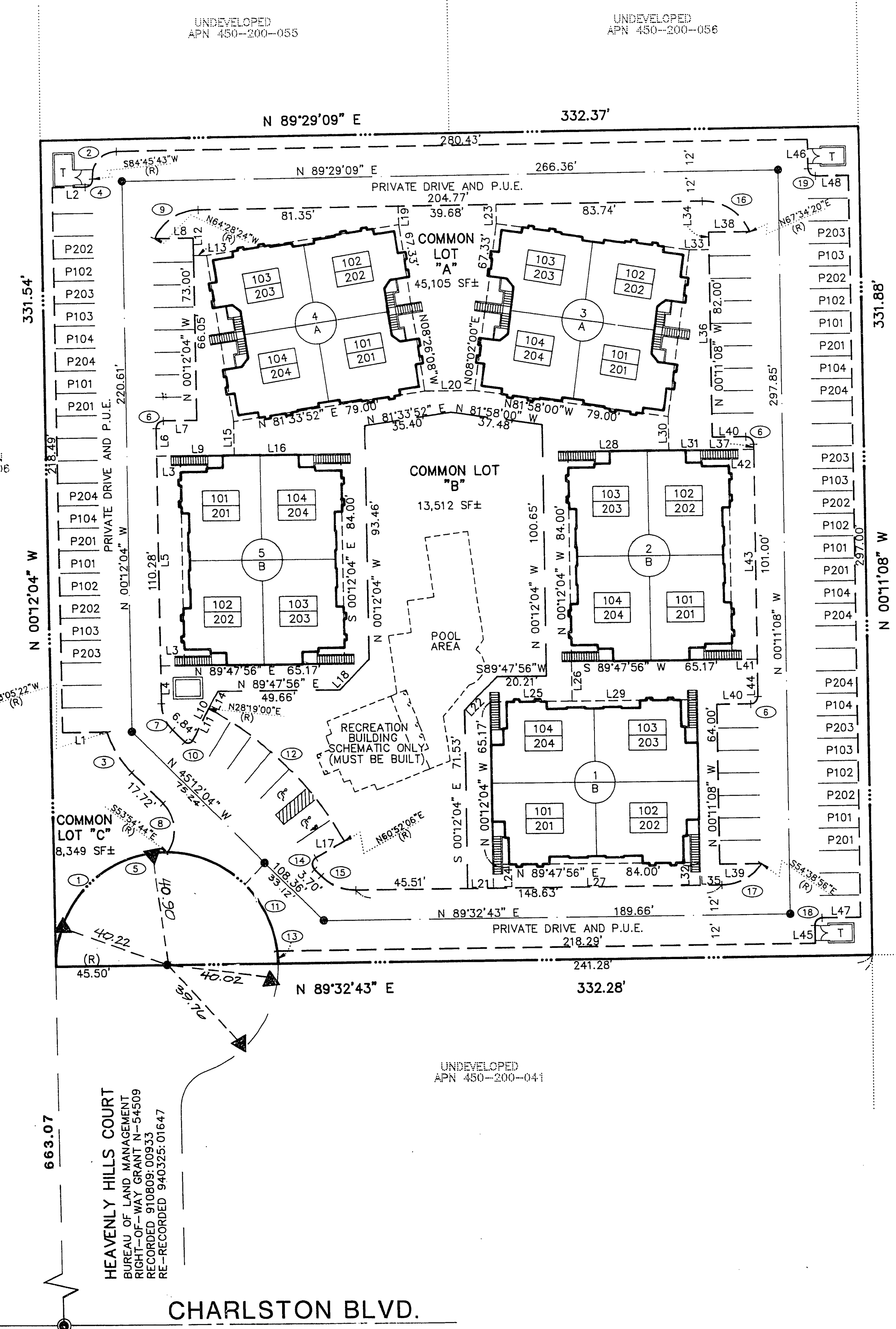
LEGEND

- SET 5/8" REBAR W/ 1-1/2" ALUM. CAP MARKED PLS 10160 FLUSH W/ ASPHALT
- ▲ SET 2" ALUM CAPS MARKED R.M. PLS 10160 IN TOP OF CURB W/ EPOXY IN DRILL HOLE
- ⊙ FOUND WELL MONUMENT AND BRASS CAP PLS 5094 SW CORNER SECTION 33

LEGEND

- SET 5/8" REBAR W/ ALUM. CAP PLS 10160
- APN ASSESSOR'S PARCEL NUMBER
- P.U.E. PUBLIC UTILITY EASEMENT
- 101 UNIT NUMBER LOWER FLOOR
- 201 UNIT NUMBER UPPER FLOOR
- P101 ASSIGNED COVERED PARKING STALL
- 5 BUILDING NUMBER
- B BUILDING TYPE (SEE SHT. 4 OF N FOR DETAILS)
- CENTERLINE
- PROPERTY LINE
- T TRASH ENCLOSURE

TOTAL NUMBER OF UNITS = 40
COVERED PARKING SPACE = 40
OPEN PARKING SPACE = 46
HANDICAP PARKING SPACES = 2
TOTAL PARKING = 88
TOTAL AREA = 2.530 ACRES ±



CURVE	DELTA	RADIUS	LENGTH	TANGENT
1	91°28'11"	45.50'	72.61'	46.68'
2	84°43'28"	10.00'	16.53'	10.86'
3	28°17'28"	39.00'	19.26'	9.83'
4	95°02'13"	3.00'	4.98'	3.28'
5	180°00'00"	45.50'	142.94'	—
6	90°00'00"	3.00'	4.71'	3.00'
7	80°00'00"	15.00'	11.78'	6.21'
8	81°17'20"	15.00'	21.28'	12.88'
9	63°52'32"	20.00'	22.32'	12.48'
10	108°28'58"	2.00'	3.72'	2.68'
11	82°15'28"	45.50'	65.32'	39.73'
12	32°33'06"	136.19'	72.37'	39.76'
13	08°18'20"	45.50'	5.03'	2.51'
14	108°04'10"	3.00'	5.56'	3.99'
15	45°15'13"	20.00'	15.80'	8.34'
16	89°05'11"	20.00'	23.77'	13.51'
17	84°11'39"	20.00'	18.92'	10.23'
18	90°18'09"	3.00'	4.73'	3.01'
19	89°40'17"	3.00'	4.70'	2.98'

LINE	BEARING	DISTANCE
L1	N 89°47'56" E	18.15'
L2	N 89°47'56" E	13.54'
L3	S 89°47'56" W	19.76'
L4	S 00°12'04" W	15.19'
L5	S 00°12'04" W	84.00'
L6	S 00°12'04" E	11.09'
L7	S 89°47'56" W	13.50'
L8	N 89°47'56" E	21.85'
L9	N 28°19'00" E	14.51'
L10	N 28°19'00" E	22.44'
L11	N 28°19'00" E	13.51'
L12	S 00°12'04" E	6.95'
L13	S 89°47'56" W	5.46'
L14	N 28°19'00" E	7.21'
L15	S 00°12'04" E	13.50'
L16	N 89°47'56" E	43.32'
L17	S 80°52'08" W	13.45'
L18	S 44°47'35" E	13.45'
L19	N 00°30'51" W	7.40'
L20	N 89°32'43" E	20.99'
L21	N 89°32'43" E	10.50'
L22	N 44°47'56" E	18.86'
L23	N 00°30'51" W	7.65'
L24	S 00°27'17" E	9.09'
L25	S 89°47'56" W	33.18'
L26	S 00°12'04" E	15.96'
L27	N 89°32'43" E	84.00'
L28	S 89°47'56" W	41.32'
L29	S 89°47'56" W	50.82'
L30	S 00°12'04" E	13.47'
L31	S 89°47'56" W	23.85'
L32	S 00°27'17" E	9.19'
L33	N 89°48'52" E	7.83'
L34	N 00°11'08" W	6.93'
L35	N 89°48'52" E	8.95'
L36	N 00°11'08" W	75.01'
L37	N 00°11'08" W	2.09'
L38	N 89°48'52" E	16.30'
L39	N 89°48'52" E	16.84'
L40	S 89°48'52" W	13.50'
L41	N 89°48'52" E	10.09'
L42	N 89°48'52" E	10.11'
L43	N 00°11'08" W	84.00'
L44	N 00°11'08" W	7.20'
L45	S 00°27'17" E	7.20'
L46	S 00°30'51" E	11.67'
L47	S 89°48'52" W	15.82'
L48	N 89°48'52" E	13.43'

UNDEVELOPED
APN 450-200-051

UNDEVELOPED
APN 450-200-030

UNDEVELOPED
APN 450-200-041

CHARLSTON BLVD.

SHEET 3 OF 6
JOB NO. 408-003-922

MONUMENT TIE MAP

L.R. NELSON CONSULTING ENGINEERS
 • STRUCTURAL 3035 E. Patrick Lane #9
 • CIVIL Las Vegas, NV 89120
 • SURVEY (702) 798-7978

BOOK 61 Page 28
Ties for 107-V2151