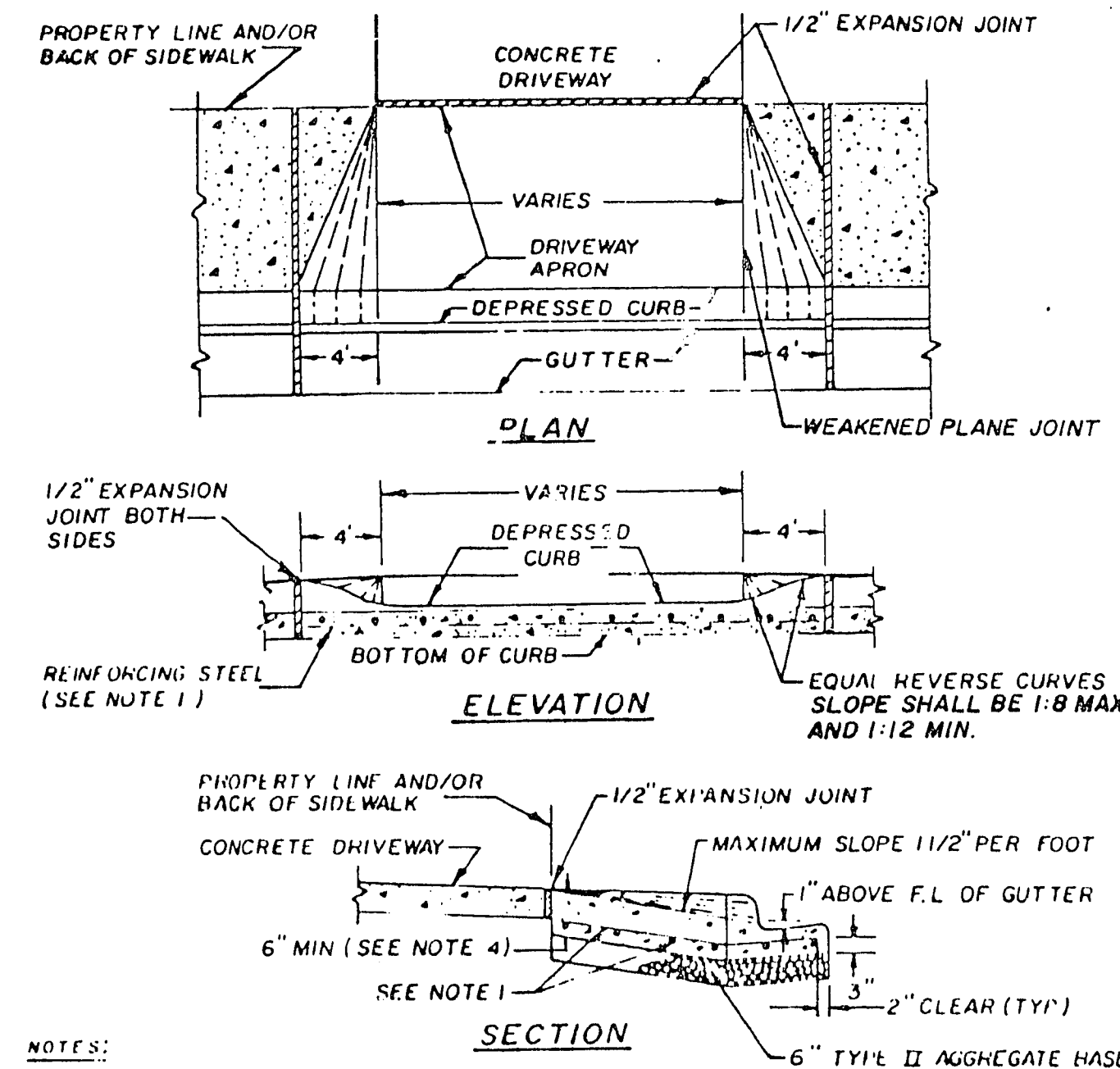


**NOTES:**

1. WHEN CONSTRUCTING DRIVEWAY WHERE CURB AND GUTTER EXISTS, COMPLETELY REMOVE INTERFERING PORTIONS OF EXISTING CURB AND GUTTER. DRIVEWAY MAY BE MONOLITHIC TO A.C. LINE.
2. CONCRETE SHALL BE CLASS B.
3. WEAKENED PLANE JOINTS SHALL BE UNIFORMLY PLACED BETWEEN 5' AND 7' INTERVALS, SEE DWG. NO. 234.

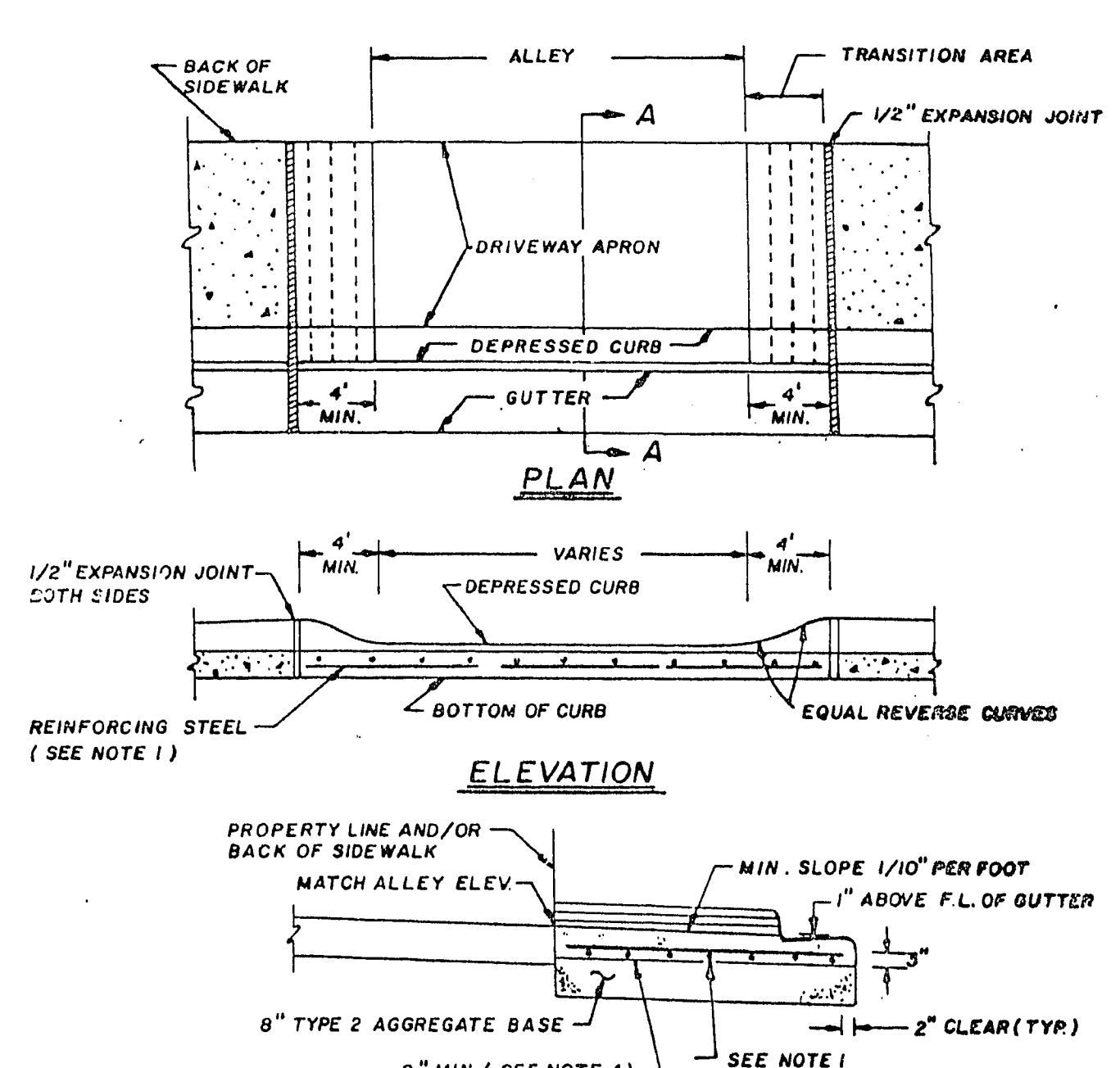
SPECIFICATION REFERENCE	UNIFORM STANDARD DRAWINGS CLARK COUNTY AREA
302 AGGREGATE BASE	RESIDENTIAL DRIVEWAY
501 CONCRETE	
502 CONCRETE STRUCTURES	
707 JOINT MATERIAL	
DATE	DWG NO. 223 PAGE NO. 29



**NOTES:**

1. NO. 4 BARS AT 16" O.C. BOTH WAYS EXTENDING INTO GUTTER. NO. 4 BARS SHALL BE PLACED 3" ABOVE BOTTOM OF CONCRETE SUPPORTED BY NONFERROUS CHAIRS APPROVED BY THE ENGINEER.
2. WHEN CONSTRUCTING DRIVEWAY WHERE CURB AND GUTTER EXISTS, COMPLETELY REMOVE INTERFERING PORTIONS OF EXISTING CURB AND GUTTER. DRIVEWAY SHALL BE MONOLITHIC TO A.C. LINE.
3. CONCRETE SHALL BE CLASS B.
4. DRIVEWAY THICKNESS FOR INDUSTRIAL USE SHALL BE 8" MIN.
5. WEAKENED PLANE JOINTS SHALL BE EQUALLY SPACED AT 15' MAX. INTERVALS, SEE DWG. NO. 234.

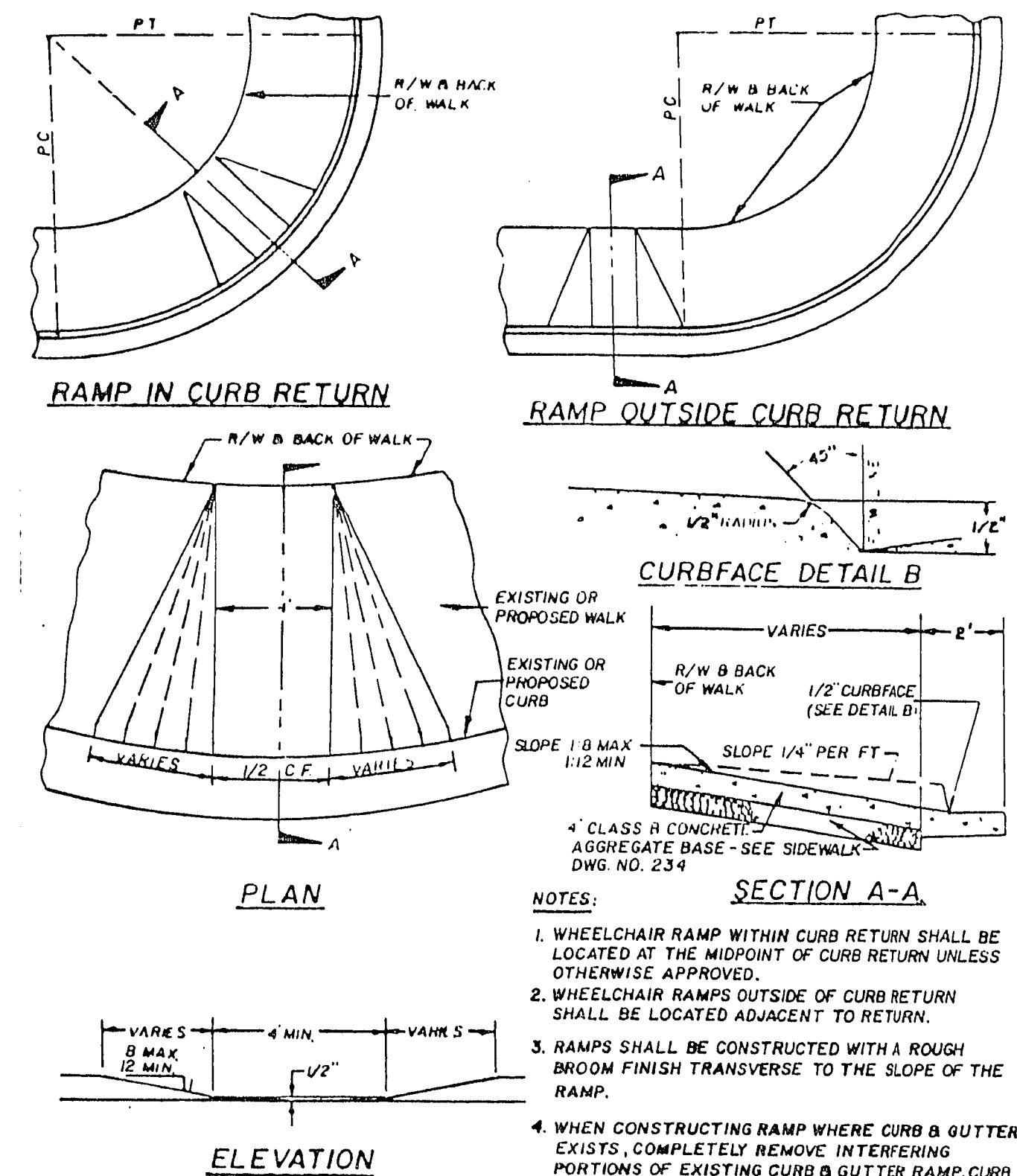
SPECIFICATION REFERENCE	UNIFORM STANDARD DRAWINGS CLARK COUNTY AREA
302 AGGREGATE BASE	COMMERCIAL AND INDUSTRIAL DRIVEWAY (OPTION A)
501 CONCRETE	
502 CONCRETE STRUCTURES	
505 REINFORCING STEEL	
707 JOINT MATERIAL	
DATE	DWG NO. 224 PAGE NO. 30



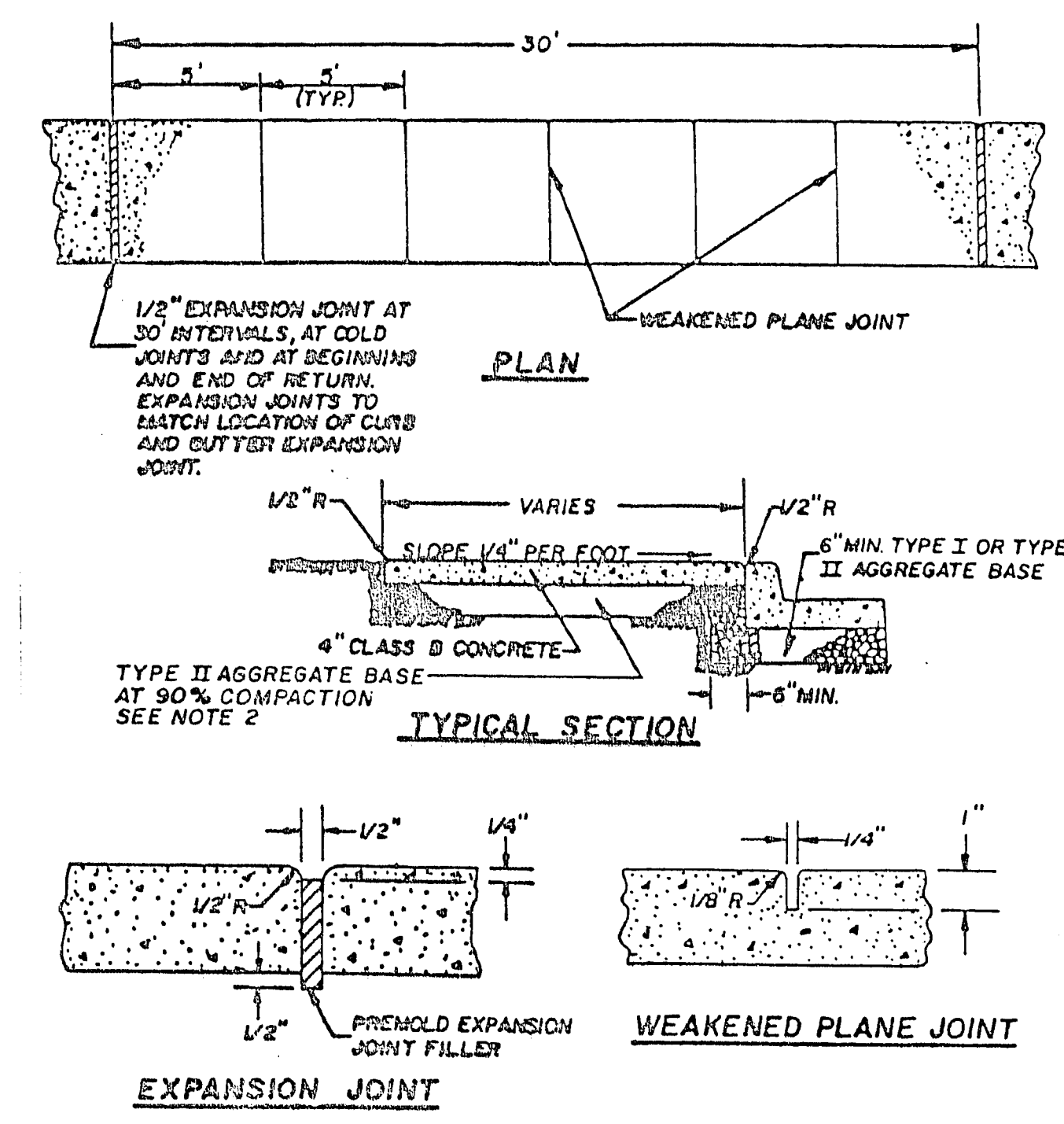
**NOTES:**

1. NO. 4 BARS AT 16" O.C. BOTH WAYS CONTINUOUS THROUGH GUTTER. NO. 4 BARS SHALL BE PLACED 3" ABOVE BOTTOM OF CONCRETE.
2. WHEN CONSTRUCTING DRIVEWAY WHERE CURB AND GUTTER EXISTS, COMPLETELY REMOVE INTERFERING PORTIONS OF EXISTING CURB AND GUTTER. DRIVEWAY SHALL BE MONOLITHIC TO A.C. LINE.
3. CONCRETE SHALL BE CLASS B.
4. DRIVEWAY THICKNESS SHALL BE 8" MIN.

SPECIFICATION REFERENCE	UNIFORM STANDARD DRAWINGS CLARK COUNTY AREA
	CITY OF LAS VEGAS ONLY DEPRESSED ALLEY DRIVEWAY
DATE	DWG NO. 227 PAGE NO. 33



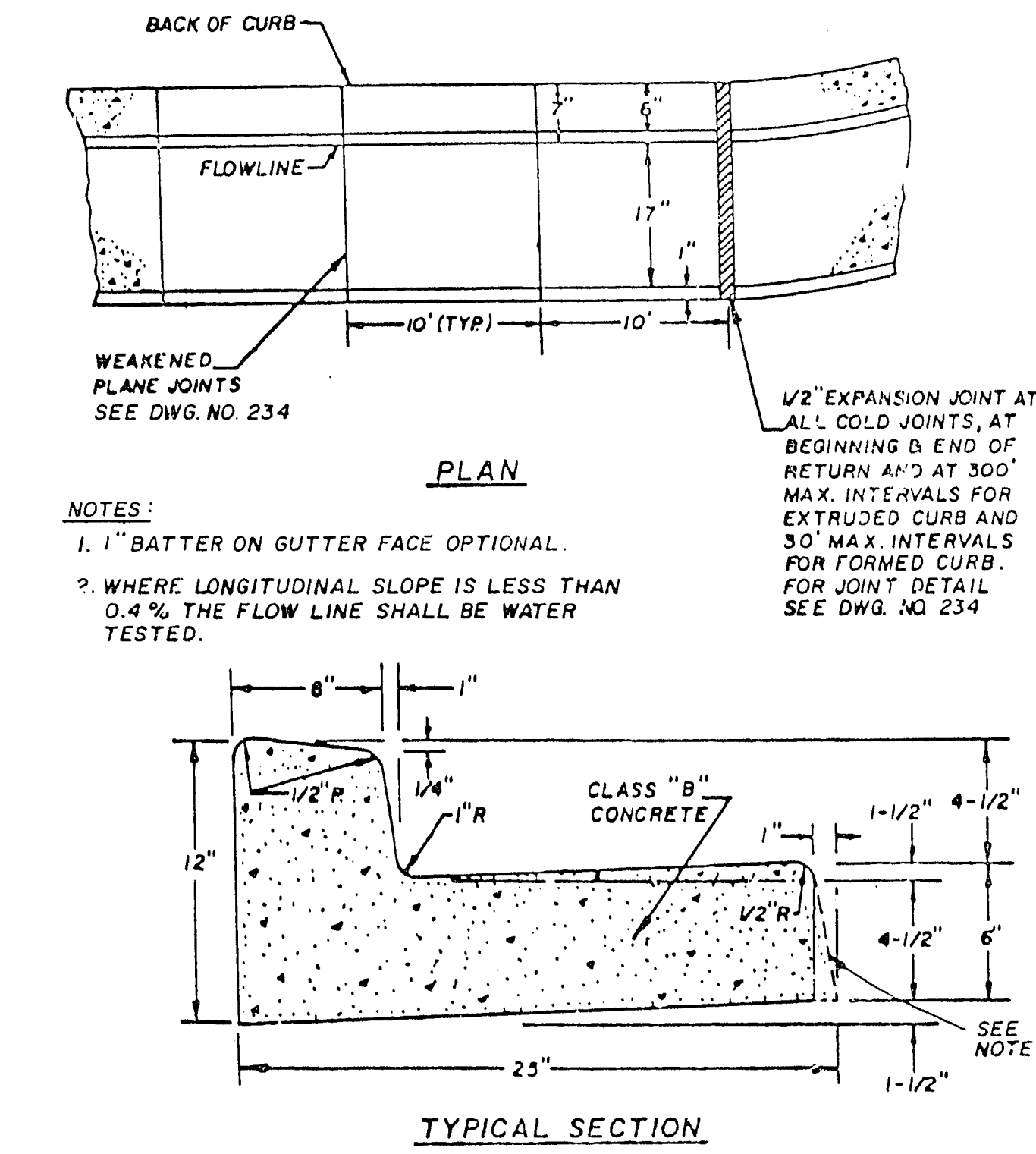
SPECIFICATION REFERENCE	UNIFORM STANDARD DRAWINGS CLARK COUNTY AREA
302 AGGREGATE BASE	WHEELCHAIR RAMP
501 CONCRETE	
502 CONCRETE STRUCTURES	
DATE	DWG NO. 235 PAGE NO. 41



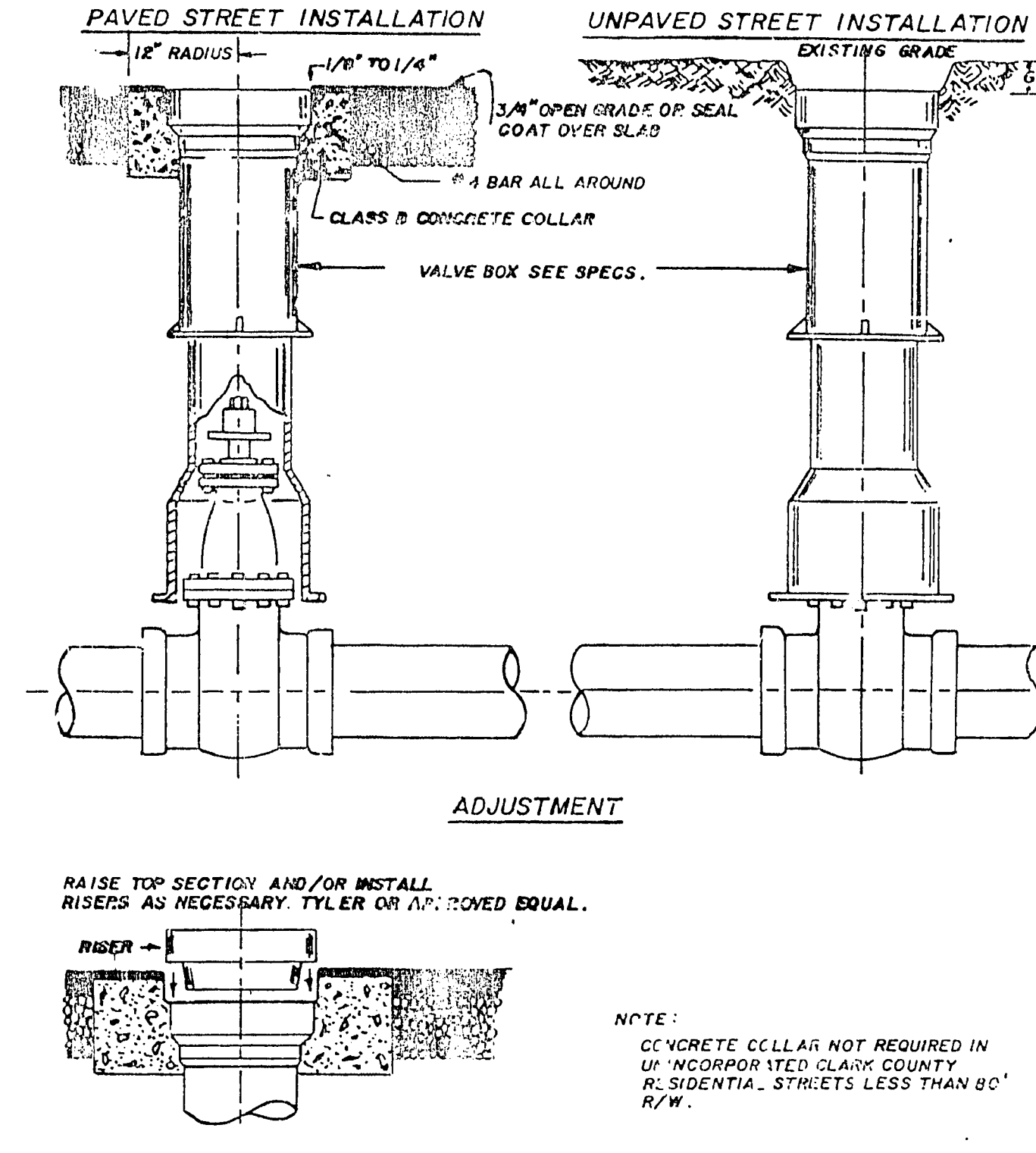
**NOTE:**

1. ON ALL CURB RETURNS A 1/2" EXPANSION JOINT SHALL BE CONSTRUCTED BETWEEN THE BACK OF CURB AND THE SIDEWALK FOR THE ENTIRE LENGTH OF THE RETURN.
2. THE TYPE II AGGREGATE BASE THICKNESS IS SHOWN ON THE TYPICAL SECTION DRAWINGS 202 - 207.
3. LONGITUDINAL WEAKENED PLANE JOINT REQUIRED AT MIDPOINT OF SIDEWALK 1" OR WIDER.

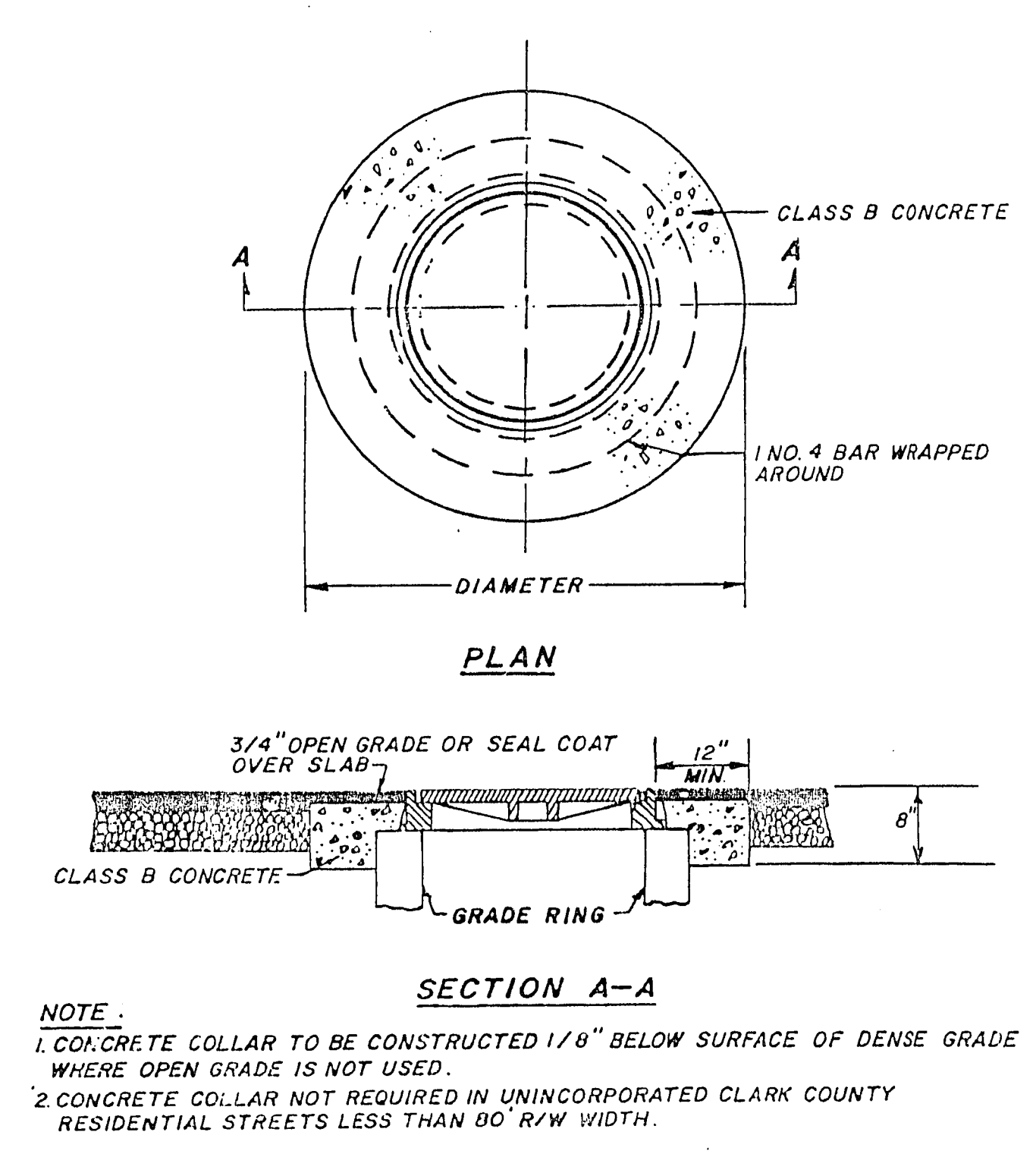
SPECIFICATION REFERENCE	UNIFORM STANDARD DRAWINGS CLARK COUNTY AREA
302 AGGREGATE BASE	SIDEWALK
501 CONCRETE	
502 CONCRETE STRUCTURES	
707 JOINT MATERIAL	
DATE	DWG NO. 234 PAGE NO. 40



SPECIFICATION REFERENCE	UNIFORM STANDARD DRAWINGS CLARK COUNTY AREA
501 CONCRETE	"L" TYPE CURB AND GUTTER
502 CONCRETE STRUCTURES	
707 JOINT MATERIAL	
DATE	DWG NO. 216 PAGE NO. 22



SPECIFICATION REFERENCE	UNIFORM STANDARD DRAWINGS CLARK COUNTY AREA
	VALVE BOX INSTALLATION & ADJUSTMENT
DATE	DWG NO. 517 PAGE NO. 137



SPECIFICATION REFERENCE	UNIFORM STANDARD DRAWINGS CLARK COUNTY AREA
501 CONCRETE	CONCRETE COLLAR AROUND MANHOLES
505 REINFORCING STEEL	
DATE	DWG NO. 408 PAGE NO. 108

Department of Public Works

**MISCELLANEOUS DETAILS**

1990 - 1991 STREET REHABILITATION HUNTRIDGE PHASE I PROJECT

Scale (h) Fld. bk. no. Design by DA Approved by

Scale (v) Date Drawn by BP Date

W.A. Revisions

CITY OF LAS VEGAS

DWG. NO. 107-VI801

23-3-113