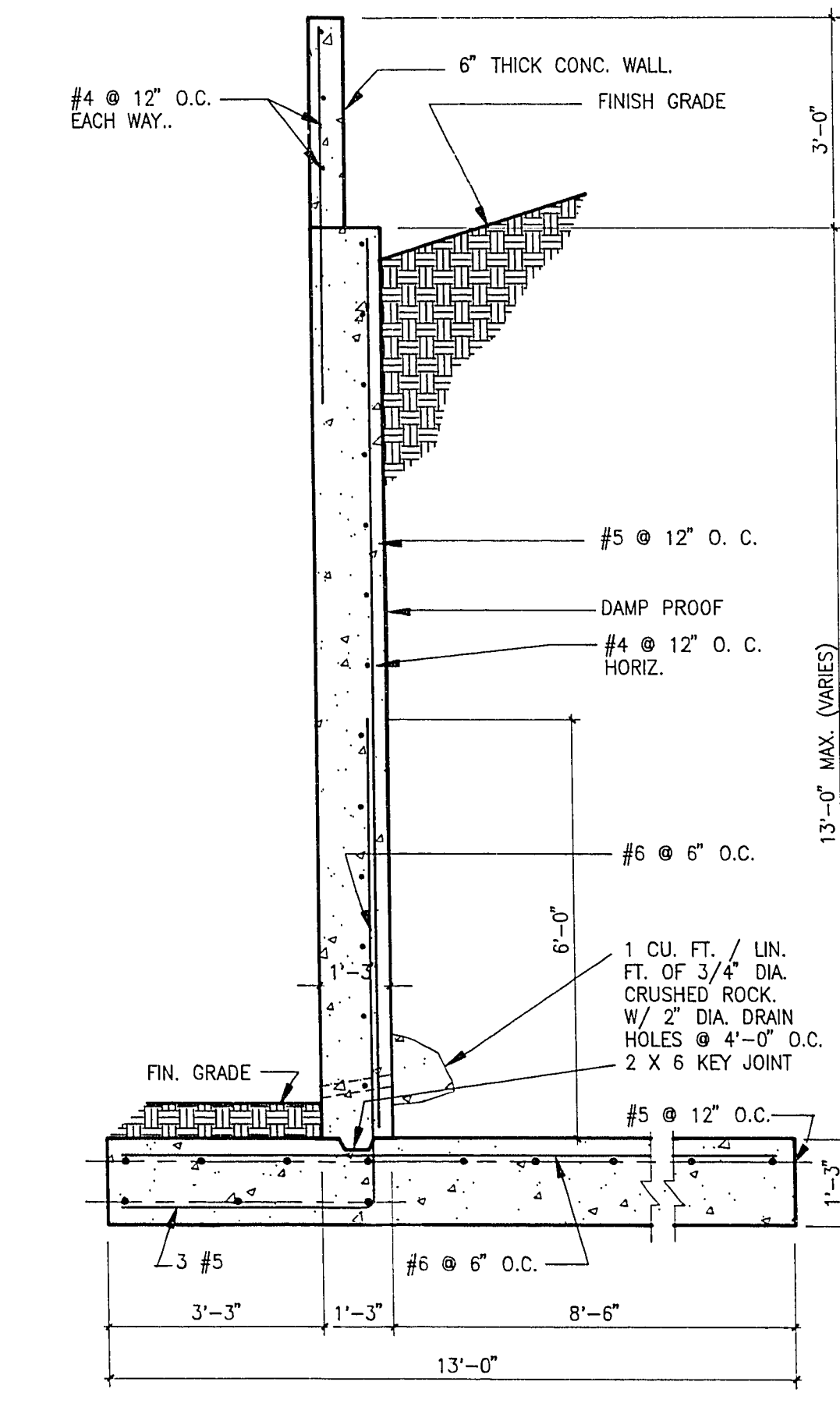
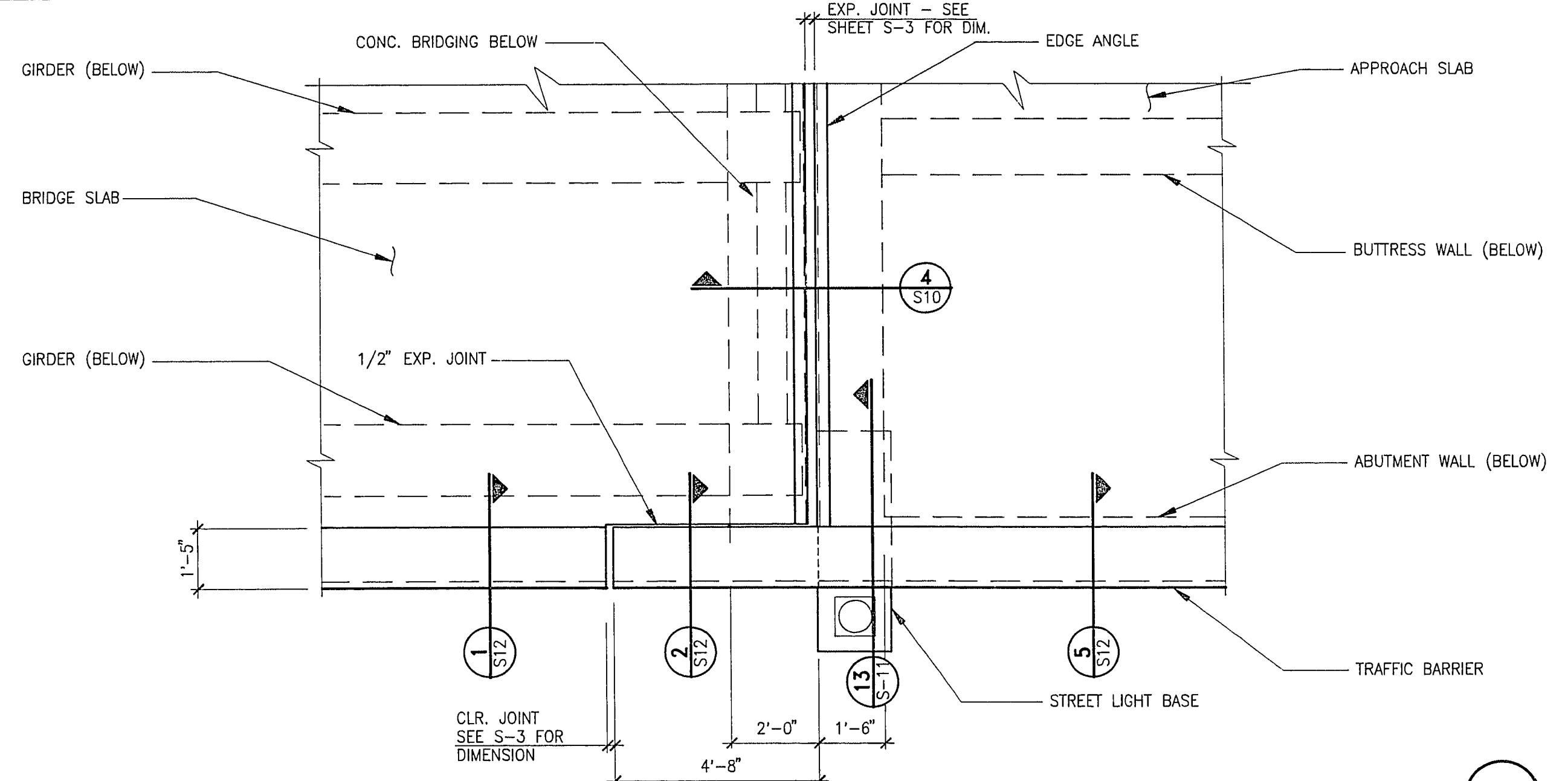


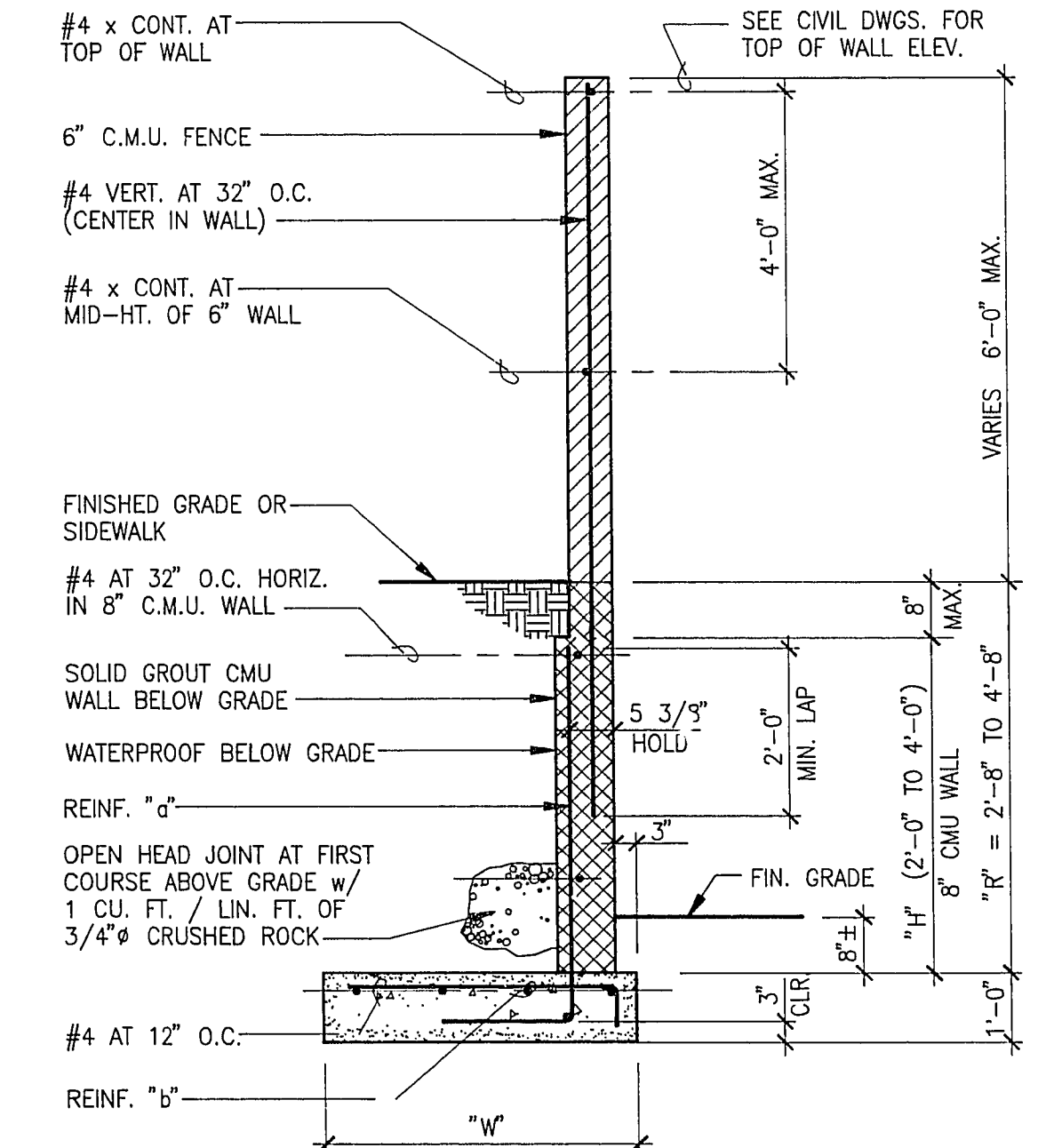
RETAINING WALL
SCALE: 1/2" = 1'-0"



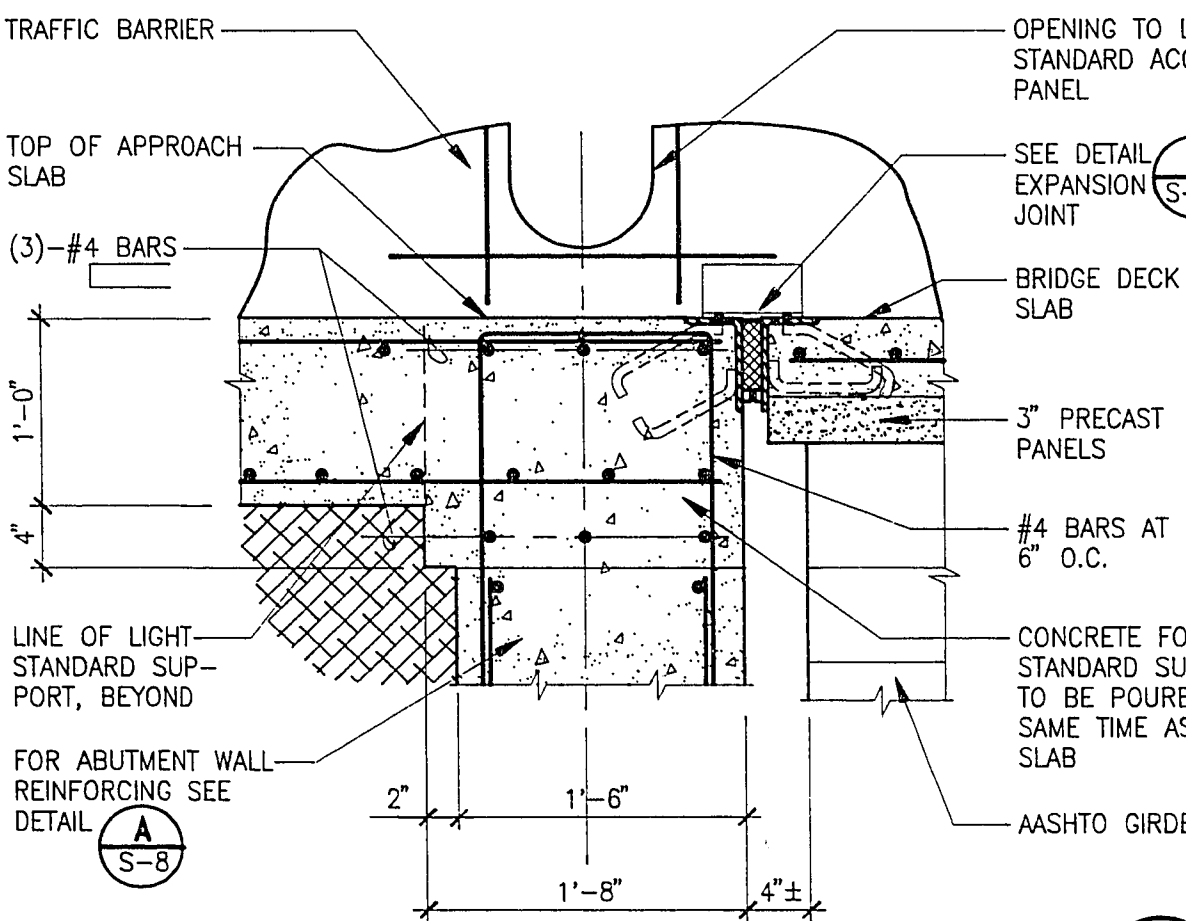
RETAINING WALL
SCALE: 1/2" = 1'-0"



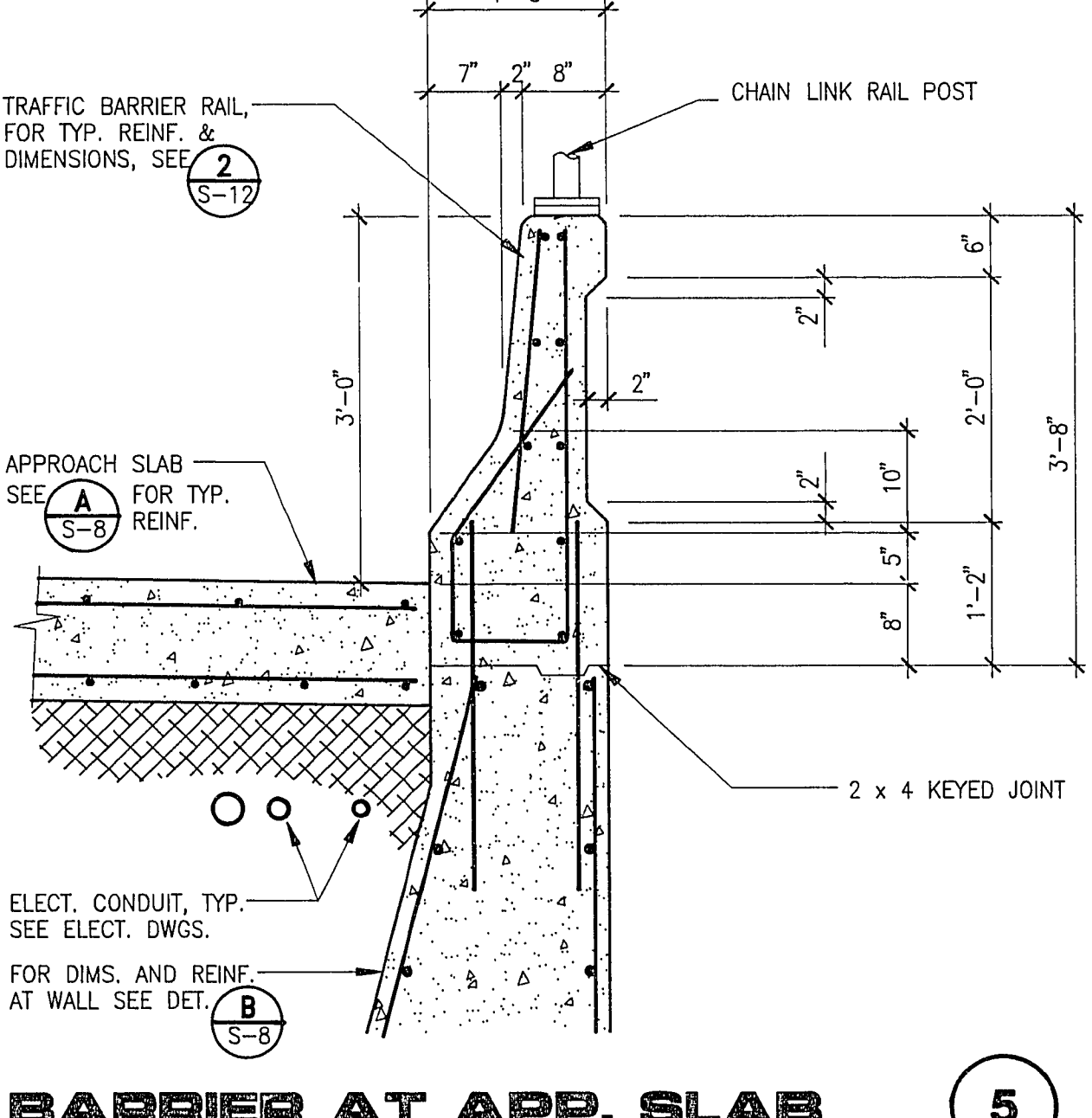
DETAIL PLAN
SCALE: 3/8" = 1'-0"



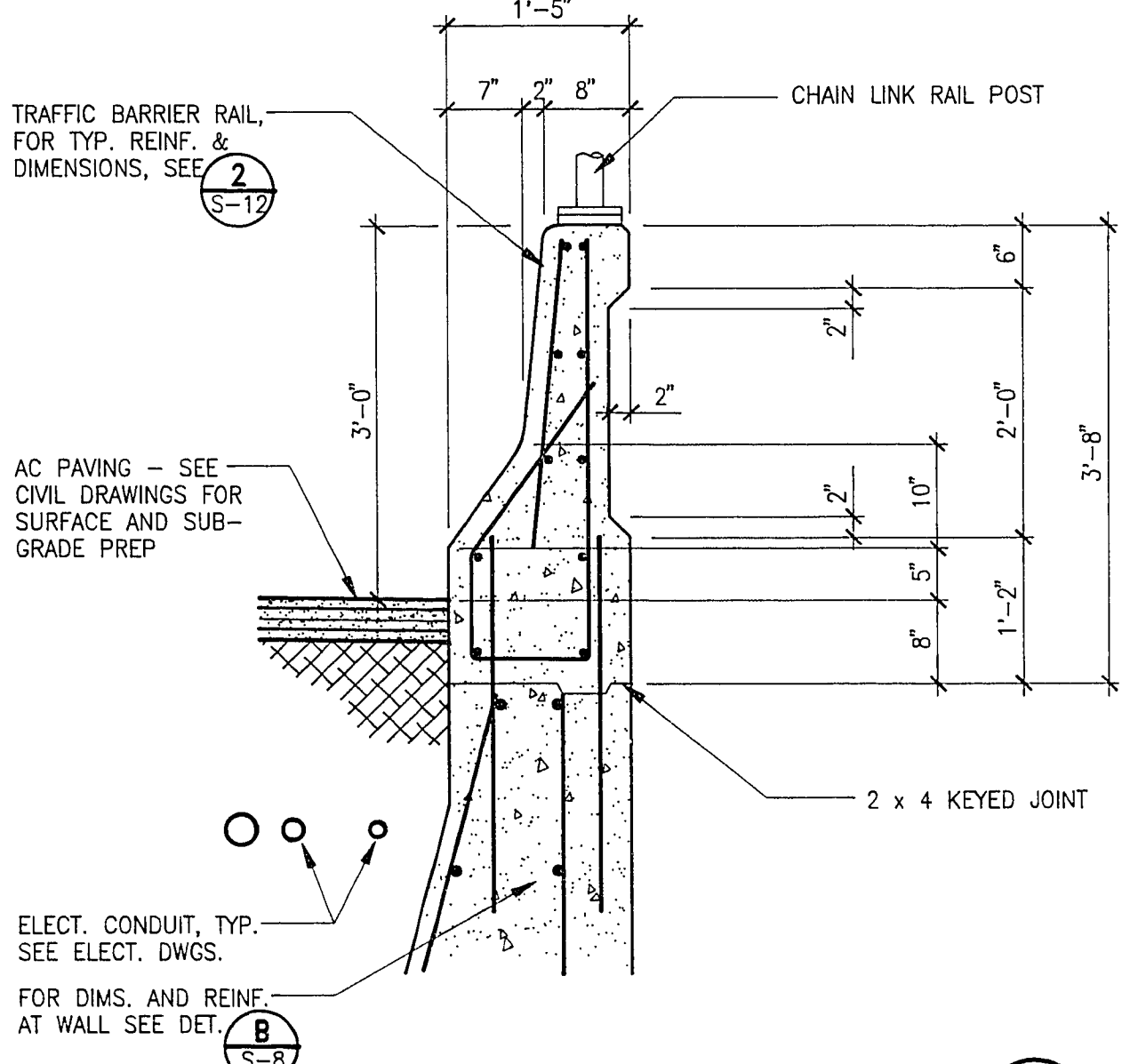
RETAINING WALL
SCALE: 1/2" = 1'-0"



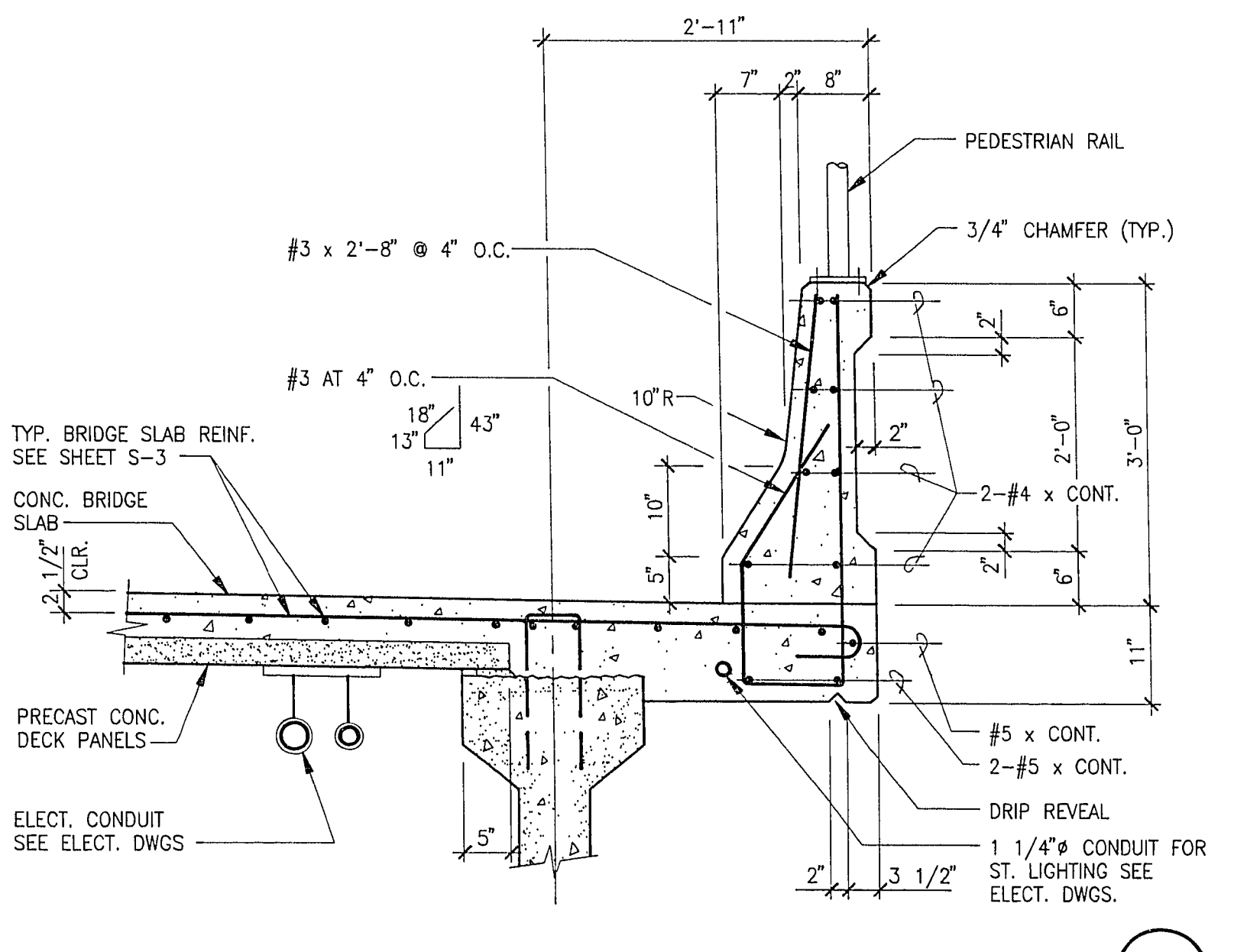
DETAIL AT LIGHT STD.
SCALE: 1" = 1'-0"



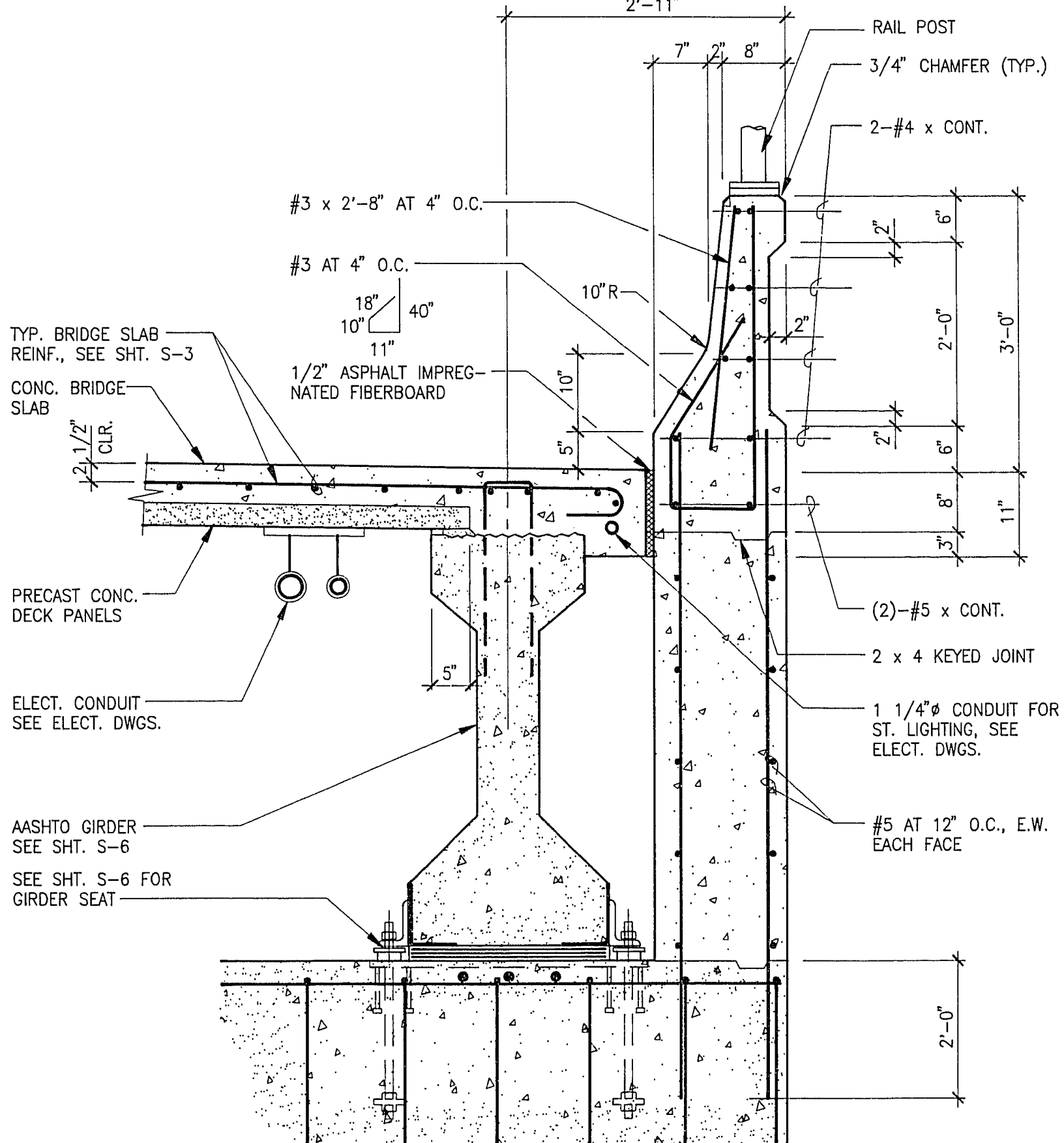
Barrier at APP. SLAB
SCALE: 3/4" = 1'-0"



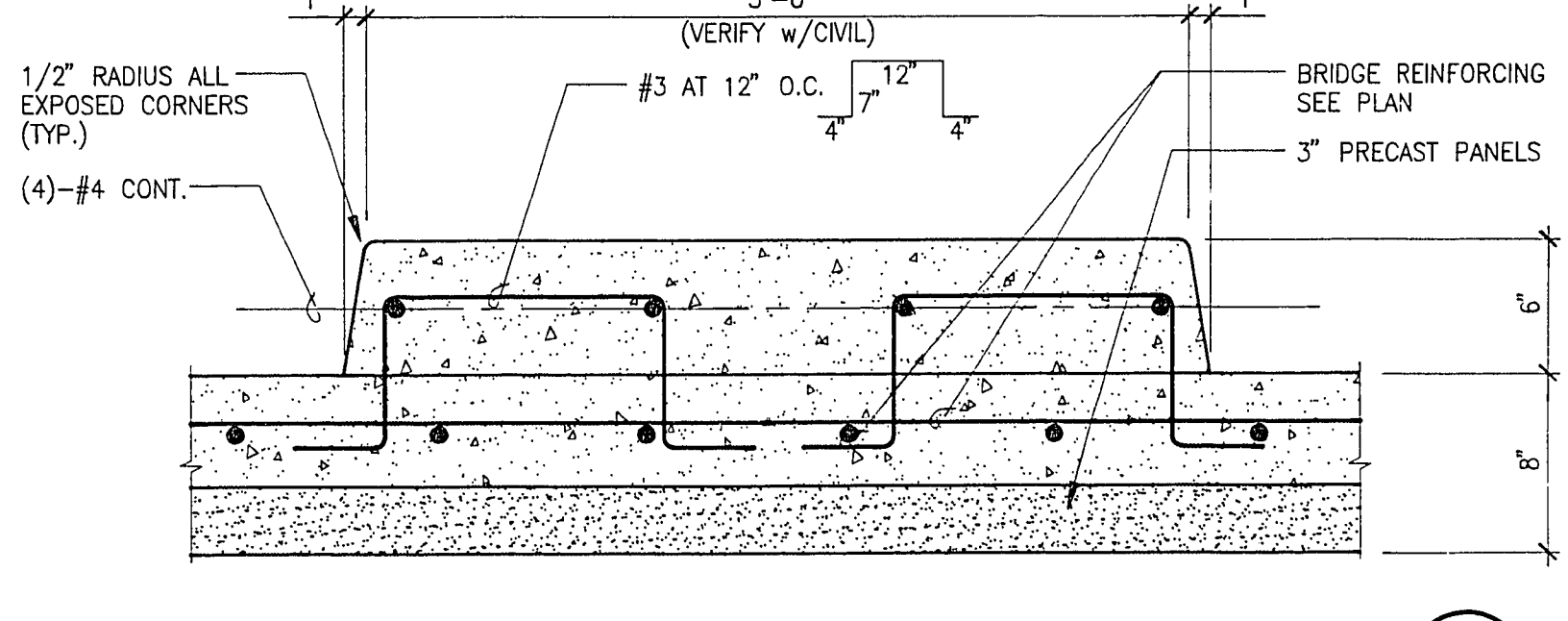
TRAFFIC BARRIER AT A.C.
SCALE: 3/4" = 1'-0"



TRAFFIC BARRIER at BRIDGE
SCALE: 3/4" = 1'-0"



TRAFFIC RAIL at EXP. JT.
SCALE: 3/4" = 1'-0"



CONCRETE MEDIAN at BRIDGE
SCALE: 1 1/2" = 1'-0"

89072A.S12 PLOTTED BY: WDE DATE: 12/19/91 TIME: 09:50 SCALE FACTOR: 1=1

GB&I CONSULTING ENGINEERS

3650 S. EASTERN AVE. • SUITE 220 • LAS VEGAS, NEVADA 89109

CONSULTANT

1-8-92

DETAILS

BUFFALO INTERCHANGE

with SUMMERLIN PARKWAY
and BUFFALO DRIVE ROADWAY BETWEEN WESTCLIFF AND WASHINGTON

CITY of LAS VEGAS, NEVADA

SHEET NUMBER
6-10

DATE: 1-9-92
DRAWN BY: LVA
CHECKED BY: CAB
DATE: 12/23/91

DESCRIPTION: BUFFALO INTERCHANGE

JOB NO.: 89109

REVISION BY: CAB

DATE: 8/07/91