

NOTICE TO CONTRACTOR

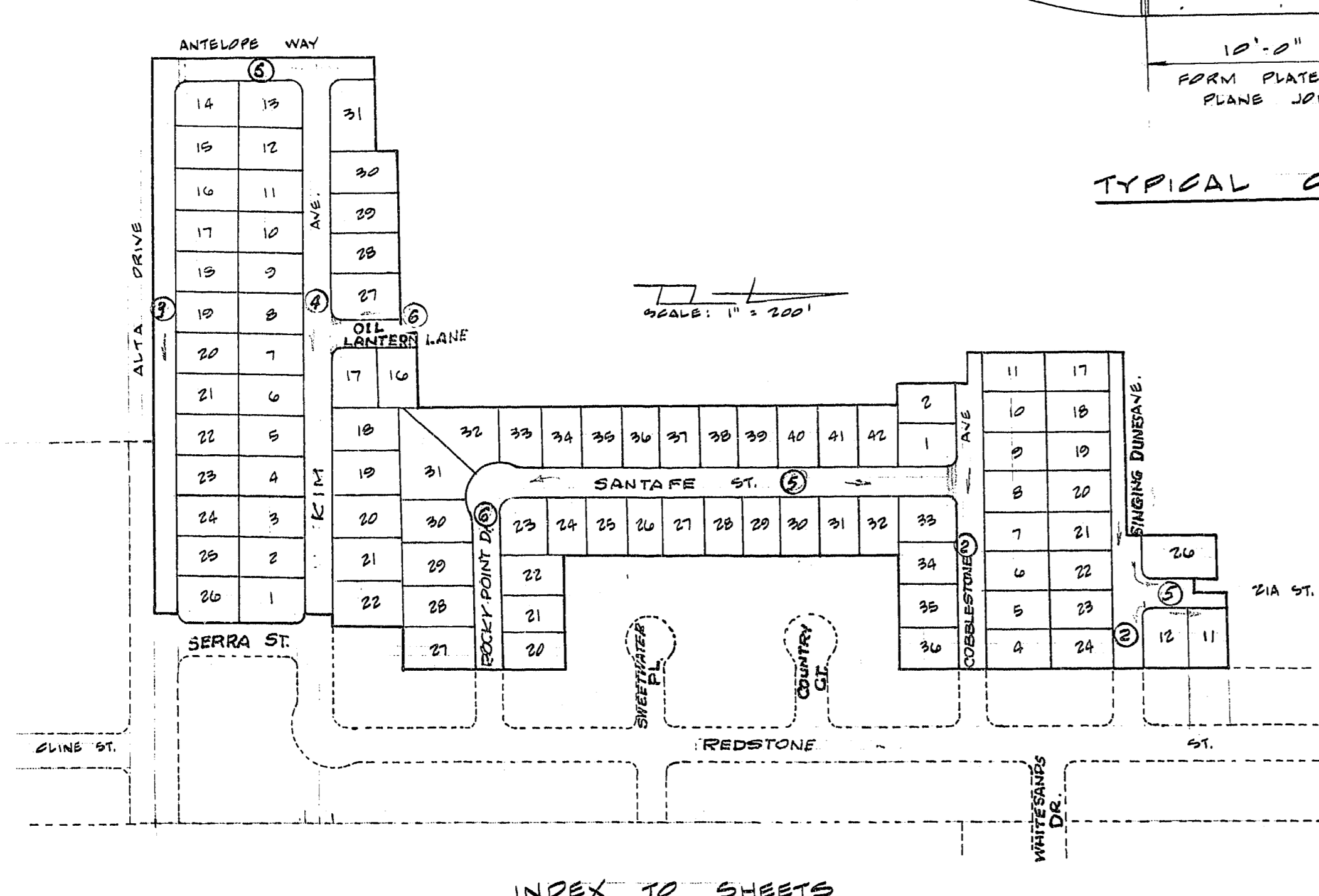
THE EXISTENCE AND LOCATION OF ANY UNDERGROUND UTILITY PIPES OR STRUCTURES SHOWN ON THESE PLANS WERE OBTAINED BY A SEARCH OF THE AVAILABLE RECORDS, AND TO THE BEST OF OUR KNOWLEDGE THERE ARE NO EXISTING UTILITIES EXCEPT AS SHOWN.

THE CONTRACTOR IS REQUIRED TO TAKE DUE PRECAUTIONARY MEASURES TO PROTECT THE UTILITY LINES SHOWN AND ANY OTHER LINES NOT OF RECORD OR NOT SHOWN ON THESE PLANS.

Victor A. Krametbauer 12-20-67
 VICTOR A. KRAMETBAUER, R.C.E.#1511 DATE

ESTIMATE OF QUANTITIES

NO.	DESCRIPTION	AMOUNT
1	3" A.C. PAVINA	4833 S.Y.
2	2" A.C. PAVINA	13,198 S.Y.
3	TYPE II ARAVEL BASE	1660 S.Y.
4	"L" TYPE CONG. CURB & OUTER	7300 L.F.
5	4" R.C.C. SIDEWALKS	28,478 S.F.
6	CONG. VALLEY CUTTER	1209 S.F.
7	CONG. DRIVEWAY APRONS	9460 S.F.
8	STANDARD BARRICADES	6 EA.



ENGINEER'S CERTIFICATE

I HEREBY CERTIFY THAT THIS EXHIBIT COMPLIES WITH F.H.A. OBJECTIVES, MINIMUM PROPERTY STANDARDS, NEIGHBORHOOD REQUIREMENTS, AND LOCAL CITY AND COUNTY SPECIFICATIONS AND STANDARDS.

Victor A. Krametbauer 12-20-67
 VICTOR A. KRAMETBAUER DATE
 NEVADA R.C.E. # 1511

APPROVED BY:
[Signature] 1-13-69
 LAS VEGAS CITY ENGINEER DATE

APPROVED BY:
[Signature] 1-3-69
 CITY OF LAS VEGAS FIELD ENGINEER DATE

BENCH MARK
 W 1/2 COR. SEC. 35, T.20S., R.00E.
 ELEVATION = 2300.42 (NEW DATUM)

REvised Sheet Names 1-16-69

VOORHEIS - TRINDLE CO. OF NEVADA
 2209 PARADISE ROAD, LAS VEGAS, NEVADA

CHARLESTON-RAINBOW UNIT NO. 6B & 7A

STREET IMPROVEMENT DETAILS

SUBMITTED BY:
Victor A. Krametbauer 12-20-67
 VICTOR A. KRAMETBAUER, R.C.E.#1511 DATE

SHEET 1 OF 13