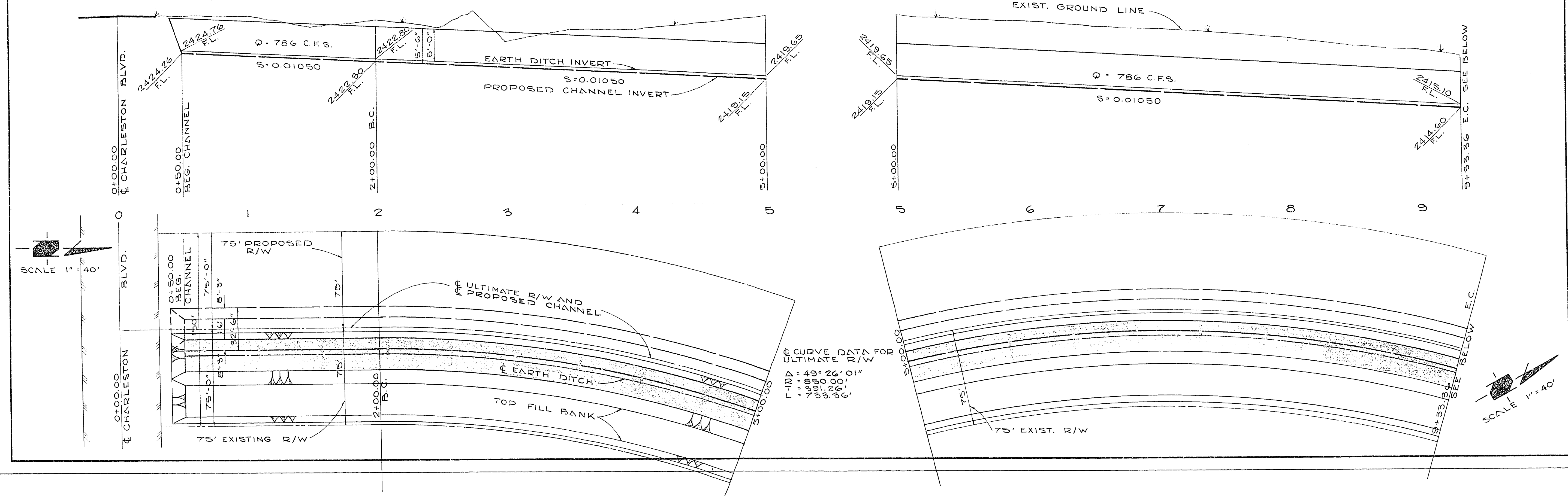


2440  
2430  
2420  
2410  
2400

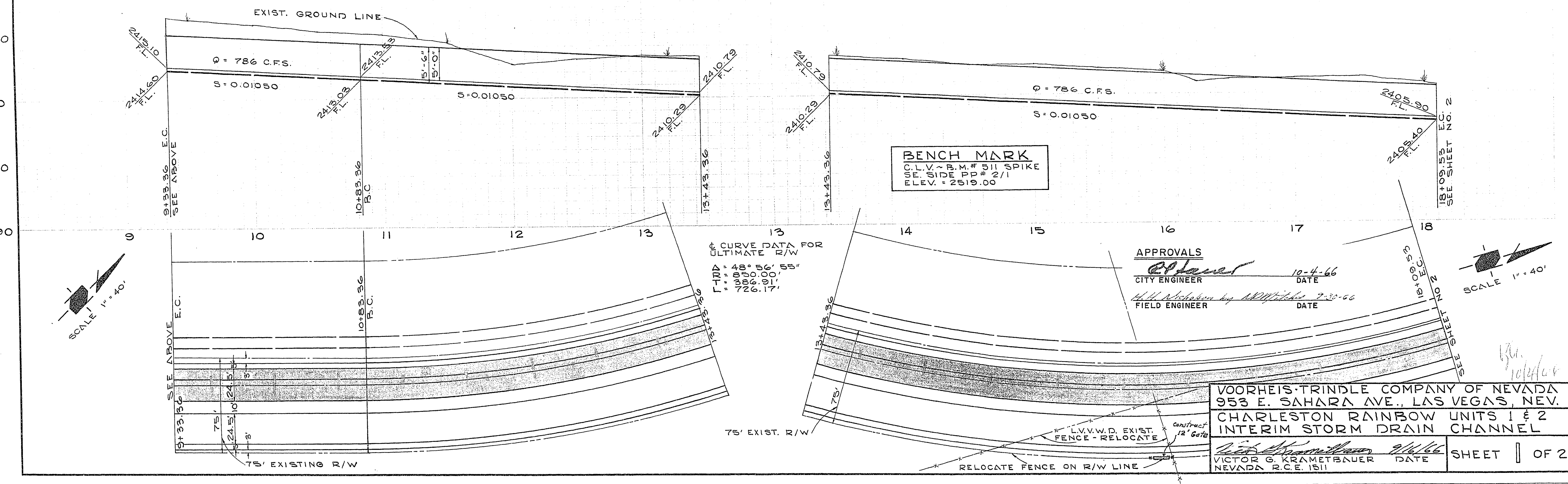
SCALES  
HORZ. 1" = 40'  
VERT. 1" = 8'



$\Delta$  CURVE DATA FOR  
 ULTIMATE R/W  
 $\Gamma$ -102 = 49° 26' 01"  
 $\Gamma$ -101 = 1850.00'  
 $\Gamma$ -100 = 391.26'  
 $\Gamma$ -99 = 39.36'

SCALE 1" = 40'

2430  
2420  
2410  
2400  
2390



**BENCH MARK**  
 C.L.V.-B.M.# 511 SPIKE  
 SE. SIDE PP # 2/1  
 ELEV. = 2619.00

$\Delta$  CURVE DATA FOR  
 ULTIMATE R/W  
 $\Gamma$ -102 = 48° 56' 55"  
 $\Gamma$ -101 = 1060.56'  
 $\Gamma$ -100 = 266.90'  
 $\Gamma$ -99 = 6.17'

**APPROVALS**  
 [Signature] 12-4-66  
 CITY ENGINEER DATE  
 [Signature] 7-30-66  
 FIELD ENGINEER DATE

VOORHEIS-TRINDLE COMPANY OF NEVADA  
 953 E. SAHARA AVE., LAS VEGAS, NEV.  
 CHARLESTON RAINBOW UNITS 1 & 2  
 INTERIM STORM DRAIN CHANNEL  
 [Signature] 9/6/66  
 VICTOR G. KRAMETBAUER DATE  
 NEVADA R.C.E. 1511

SHEET 1 OF 2

327/1055