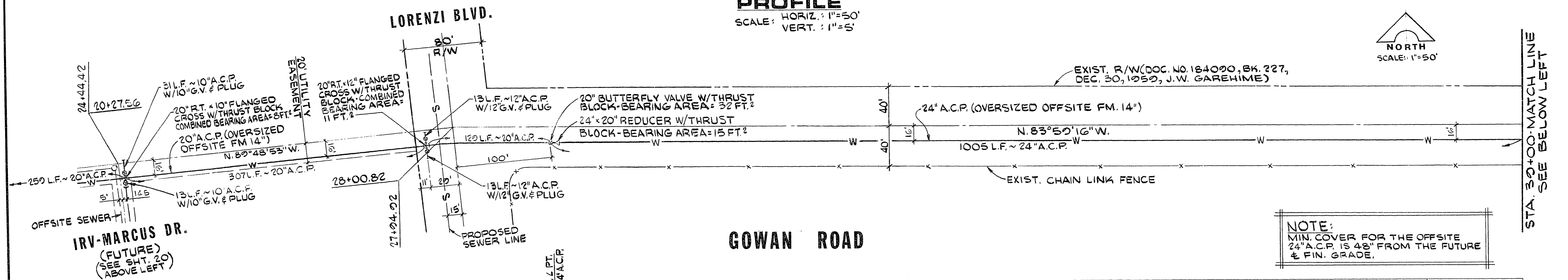
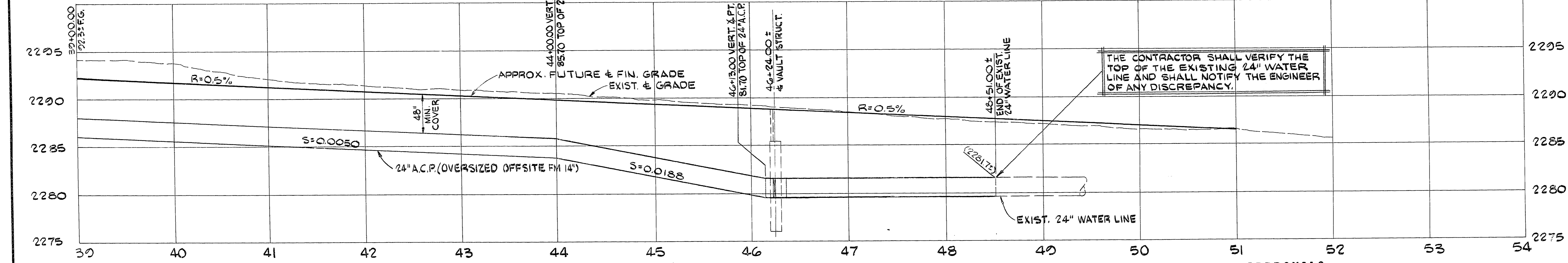


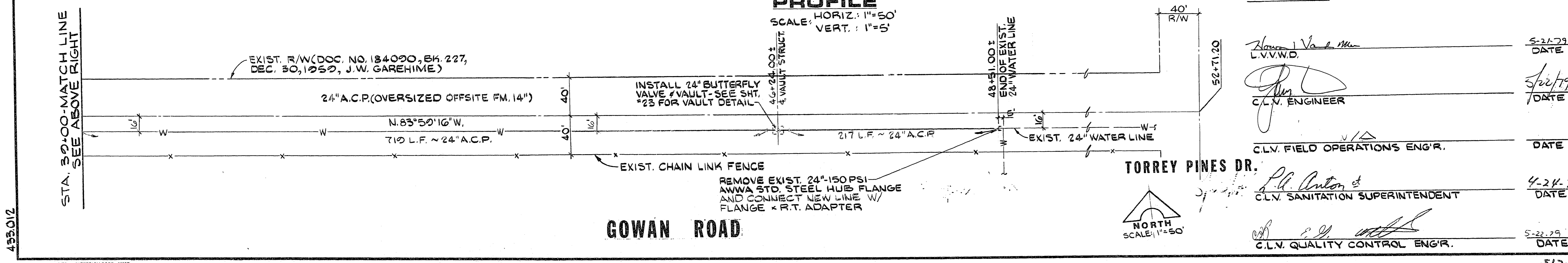
PROFILE
SCALE: HORIZ. 1"=50'
VERT. 1"=5'



NOTE:
MIN. COVER FOR THE OFFSITE
24" A.C.P. IS 48" FROM THE FUTURE
& FIN. GRADE.



PROFILE
SCALE: HORIZ. 1"=50'
VERT. 1"=5'



APPROVALS:

[Signature] 5-24-79
L.V.V.W.D. DATE

[Signature] 5/22/79
C.L.V. ENGINEER DATE

C.L.V. FIELD OPERATIONS ENGR. DATE

[Signature] 4-24-79
C.L.V. SANITATION SUPERINTENDENT DATE

[Signature] 5-22-79
C.L.V. QUALITY CONTROL ENGR. DATE



RECOMMENDED	DATE	DESCRIPTION
BY: G.C. WALLACE	5/6/79	
BY: G.C. WALLACE	5/6/79	

G. C. WALLACE
Consulting Engineers, Inc.
1100 East Sahara Ave. - Las Vegas, Nevada 89104 • 732-3330

CHARLESTON HEIGHTS DEVELOPMENT CO.
CHARLESTON HEIGHTS — TRACT NO. 57A

OFFSITE WATER

SHEET
22
OF 23 SHEETS

453.012