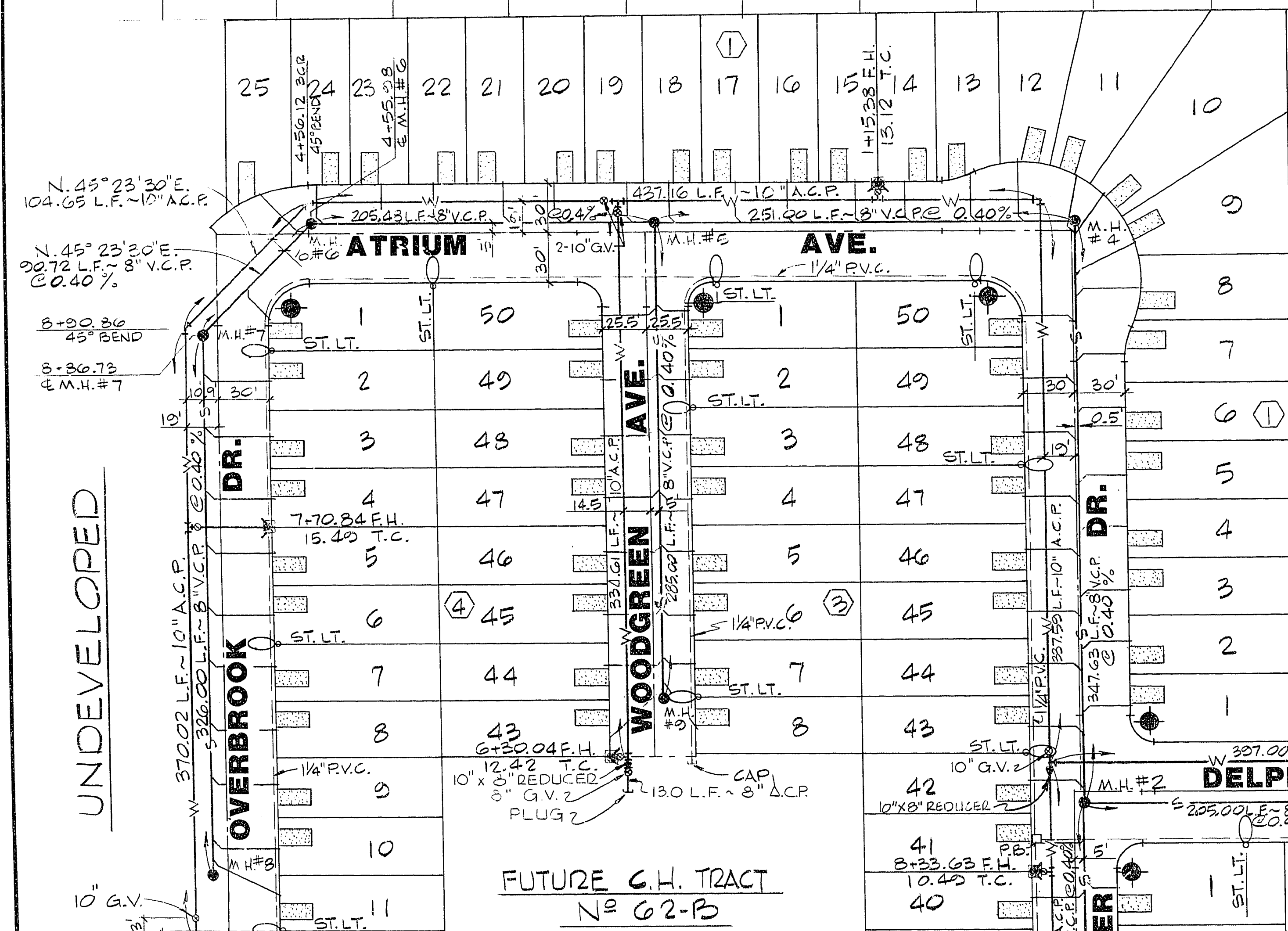


SUNCREST MEADOWS UNIT N^o 1

BOOK 25, PAGE 7



LEGEND

- STD. F.H. W/6" G.V. & 6" A.C.P. LATERAL
- SEWER MANHOLE
- EXISTING LUMINAIRE
- NEW 100 W, H.P.S. LUMINAIRE W/ 11 GA. POLE
- NEW 250 W, H.P.S. LUMINAIRE W/ 11 GA. POLE
- 1/4" P.V.C. (ST. LIGHT CONDUIT.)
- GATE VALVE
- WATER LINE
- SEWER LINE
- # 3/2 CONC. PULL BOX W/ METAL COVER
- CONCRETE DRIVEWAY
- STOP & ST. NAME SIGN
- ST. NAME SIGN
- SERVICE POINT

NOTES:

1. ALL FIELD WIRE TO BE 2-#4 THW & 1-#8 GREEN.
2. CHISEL S.W. & G. WHERE THESE LATERALS PASS UNDER THE CURB.
3. SERVICE POINT - LINE SIZE 2-#2s & 1-#6 THW

ESTIMATE OF QUANTITIES

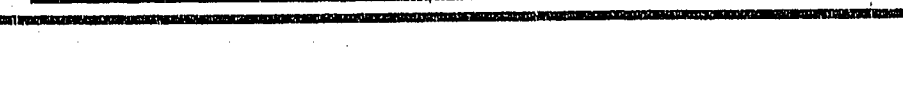
STD. F.H. W/6" G.V. & 6" A.C.P. LATERAL	4	EA.
10" A.C.P.	2436	L.F.
8" A.C.P.	570	EA.
10" GATE VALVE W/ VALVE BOX & COVER	5	EA.
8" GATE VALVE W/ VALVE BOX & COVER	2	L.F.
METER BOX	73	EA.
2" BLOW-OFF ASSEMBLY	2	EA.
3/8" METERS (BY L.V.V.W.D.)	73	EA.
3/4" SERVICE LATERALS	73	EA.
6"X6" MECH. JOINT TAPPING TEE W/6" G.V.	1	EA.

TYP. TRENCH SECTION

(FOR SEWER ONLY)



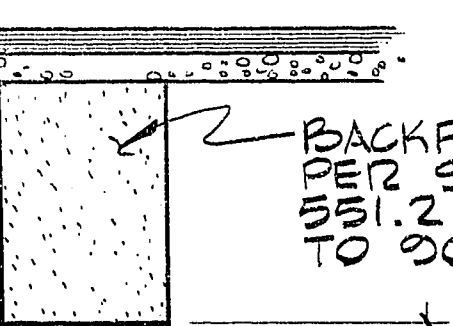
TYP. STREET SECTION



REMOVE PLUG & CONNECT TO EXIST. 8" A.C.P. W/ NEW 8" X 10" REDUCER

UNDEVELOPED

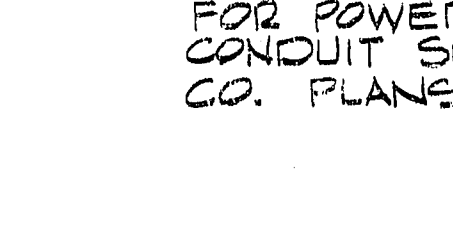
CONNECT TO EXIST. M.H.



TYPE II GRAVEL

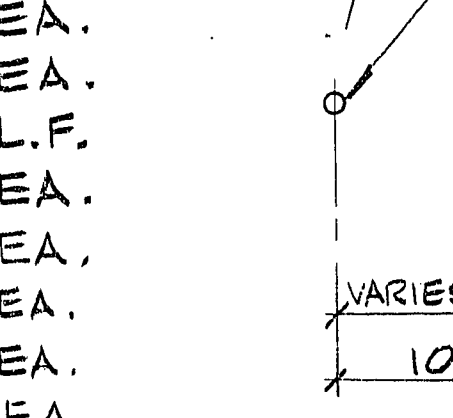
TYP. TRENCH SECTION

(FOR SEWER ONLY)



TYP. STREET SECTION

(FOR POWER & TELEPHONE CONDUIT SEE NEV. POWER CO. PLANS.)



TYP. STREET SECTION

(FOR ST. LIGHT CONDUIT SEE C.L.V. SPECS.)



NORTH SCALE: 1"=50'

TO BE INSTALLED BY NEVADA POWER CO. EXIST. M.H.

EXIST. 8" R.V.C. SEWER

EXIST. 8" A.C.P. WATER LINE

EXIST. 1/4" P.V.C. ST. LT. CONDUIT

EXIST. M.H.

EXIST. 8" R.V.C. SEWER

EXIST. 8" A.C.P. WATER LINE

EXIST. 1/4" P.V.C. ST. LT. CONDUIT

EXIST. M.H.

EXIST. 8" R.V.C. SEWER

EXIST. 8" A.C.P. WATER LINE

EXIST. 1/4" P.V.C. ST. LT. CONDUIT

EXIST. M.H.

EXIST. 8" R.V.C. SEWER

EXIST. 8" A.C.P. WATER LINE

EXIST. 1/4" P.V.C. ST. LT. CONDUIT

EXIST. M.H.

EXIST. 8" R.V.C. SEWER

EXIST. 8" A.C.P. WATER LINE

EXIST. 1/4" P.V.C. ST. LT. CONDUIT

EXIST. M.H.

EXIST. 8" R.V.C. SEWER

EXIST. 8" A.C.P. WATER LINE

EXIST. 1/4" P.V.C. ST. LT. CONDUIT

EXIST. M.H.

EXIST. 8" R.V.C. SEWER

EXIST. 8" A.C.P. WATER LINE

EXIST. 1/4" P.V.C. ST. LT. CONDUIT

EXIST. M.H.

EXIST. 8" R.V.C. SEWER

EXIST. 8" A.C.P. WATER LINE

EXIST. 1/4" P.V.C. ST. LT. CONDUIT

EXIST. M.H.

PROJECT SITE



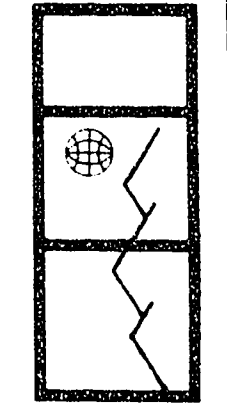
VICINITY MAP

WATER NOTES:

1. ALL WORK TO CONFORM TO LAS VEGAS VALLEY WATER DISTRICT STANDARD PLATES.
2. ALL WORK, EXCEPT AS MODIFIED HEREON OR BY NOTE NO. 1 SHALL BE DONE IN ACCORDANCE WITH THE MOST CURRENT DRAFT OR EDITION OF UNIFORM STANDARD SPECIFICATIONS FOR PUBLIC WORKS CONSTRUCTION OFFSITE IMPROVEMENTS CLARK COUNTY AREA.
3. NOTICE TO BE GIVEN ENGINEERING DEPARTMENT OF THE LAS VEGAS VALLEY WATER DISTRICT 48 HOURS PRIOR TO ACTUAL CONSTRUCTION.
4. SERVICE SADDLES OR TAPPED COLLARS WILL BE REQUIRED ON ALL SERVICES. DOUBLE TAP COLLARS ARE NOT PERMITTED.
5. ALL LINES TO BE PRESSURE TESTED TO 200 PSI.
6. ALL VALVE BOXES SHALL HAVE CONCRETE COLLARS AT SURFACE OF PAVED AREAS.
7. DEFLECTION ANGLE SHALL NOT EXCEED 2-1/2 DEGREES PER 13 FOOT SECTION OF PIPE FOR PIPE SIZES SMALLER THAN 14 INCHES AND SHALL NOT EXCEED 2 DEGREES FOR PIPE SIZES BETWEEN 14 INCHES AND 16 INCHES.
8. ALL METERS SHALL BE LOCATED OUTSIDE OF DRIVEWAYS.
9. DETECTOR TAPE REQUIRED IN ACCORDANCE WITH STANDARD PLATE NO. 27 WHERE INDICATED AND AS FOLLOWS:
 - A. OVER ALL MAINS NOT INSTALLED AT 6 FEET FROM BACK OF CURB.
 - B. OVER ALL SERVICE LATERALS NOT INSTALLED AT RIGHT ANGLES TO MAINS.
10. FIRE HYDRANTS IN PRIOR TO CONSTRUCTION WITHIN 500 FT. OF ALL CONSTRUCTION PER LAS VEGAS FIRE DEPT.

APPROVALS:

<i>[Signature]</i> C.L.V. ENGINEER	DATE
ND C.L.V. FIELD OPERATIONS ENGR.	DATE
<i>[Signature]</i> C.L.V. ELECTRICIAN	2-28-80 DATE
<i>[Signature]</i> C.L.V. ELECTRICAL COORDINATOR	3/25/80 DATE
<i>[Signature]</i> C.L.V. SANITATION SUP'T.	DATE
<i>[Signature]</i> NEVADA POWER CO.	3-13-80 DATE
<i>[Signature]</i> LAS VEGAS VALLEY WATER DISTRICT	4-24-80 DATE
<i>[Signature]</i> C.L.V. FIRE DEPT.	3-29-80 DATE
<i>[Signature]</i> C.L.V. QUALITY CONTROL ENGR.	DATE



G.C. WALLACE
Consulting Engineers, Inc.
1100 East Sahara Ave. - Las Vegas, Nevada 89104 - 792-3330

BECKER & SONS
CHARLESTON HEIGHTS TRACT NO. 62-A
UTILITY PLAN
SHEET 5 OF 12 SHEETS

JOB NO. 470.012