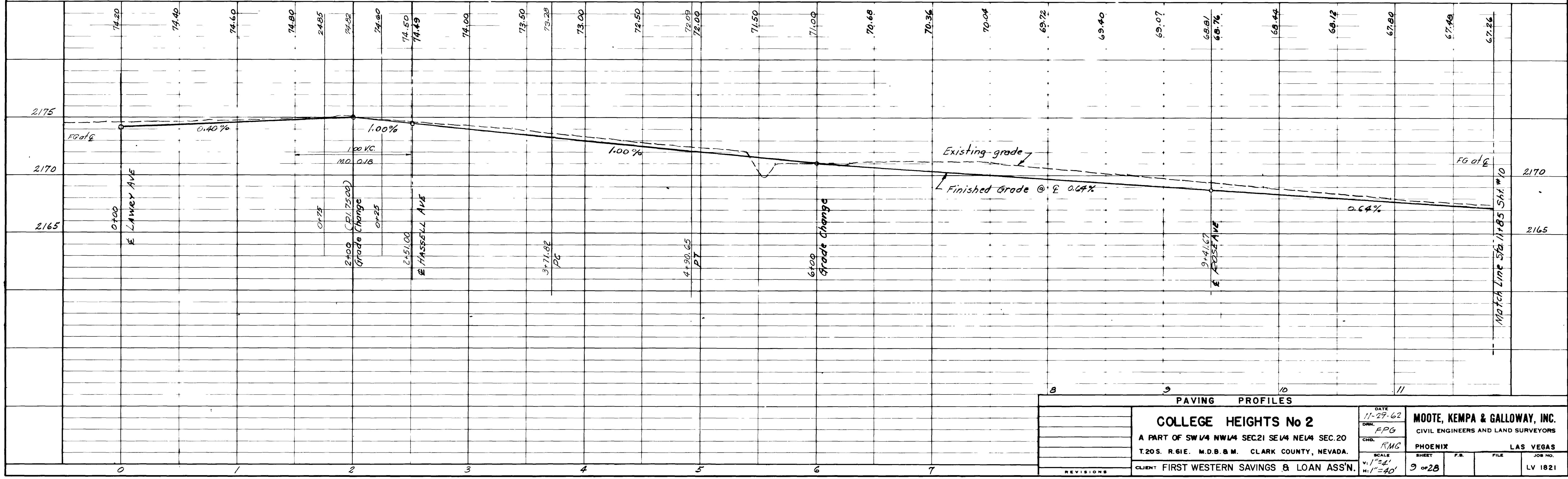


Submitted by *[Signature]* Date 12/1/62  
 Robert J. McWITT P.E. & L.S. #661

Approved by *[Signature]* Date 3/17/63  
 City Engineer

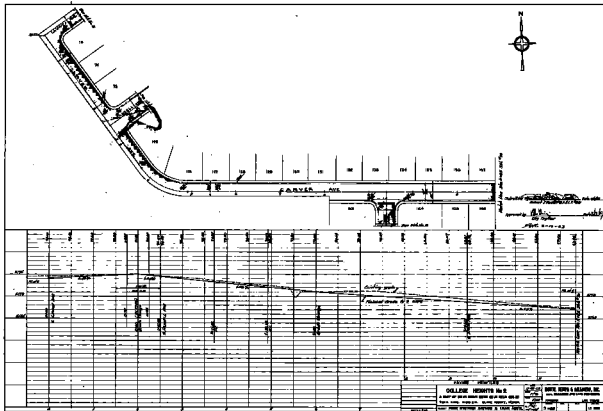
JPL 2-19-63



| PAVING PROFILES                                     |  | DATE         | MOOTE, KEMPA & GALLOWAY, INC.      |              |
|---|--|--------------|------------------------------------|--------------|
| COLLEGE HEIGHTS No 2                                |  | 11-29-62     | CIVIL ENGINEERS AND LAND SURVEYORS |              |
| A PART OF SW 1/4 NW 1/4 SEC 21 SE 1/4 NE 1/4 SEC 20 |  | DRN. FPG     | PHOENIX LAS VEGAS                  |              |
| T. 20S. R. 61E. M.D.B. & M. CLARK COUNTY, NEVADA.   |  | CHKD. R.M.G. | SHEET 3 OF 28                      | FILE LV 1821 |
| CLIENT FIRST WESTERN SAVINGS & LOAN ASS'N.          |  | SCALE 1"=40' |                                    |              |

3994

107Y-1110-2



COLLIER HENRY & COMPANY, INC.  
 ENGINEERS AND ARCHITECTS  
 1000 ...  
 ...  
 ...