

**STREET LIGHT SPECIFICATIONS**

Standards for 51' R/W and 60' R/W streets shall be Pacific Union Metal Co. Design F.B. 330-B1-8 or F.B. 1130-B1-8 with Modifications L-39 and 14, or approved equal. There shall be at least one pole at each intersection.

Standards for 80' R/W streets and over, shall be Pacific Union Metal Co. Design F.B. 330-B1-8 or F.B. 1130-B1-8 with Modification 14, or approved equal.

On 80' R/W streets there shall be 2 poles on diagonal corners.  
 On 100' R/W streets there shall be one pole at each corner.  
 Mercury Vapor Luminaires to be used on 51' R/W and 60' R/W streets, except at intersections, shall be 175 watt, series circuit, 6.6 amps., I.E.S. Distribution Type 2, General Electric Catalog C706G011 or approved equal.

Mercury Vapor Lamps to be used on 51' R/W and 60' R/W streets, except at intersections, shall be 175 watt, Colortone Hi-output white, 8000 lumens, Westinghouse Catalog #H39-22KC/W or approved equal.  
 Mercury Vapor Luminaires to be used on 51' R/W and 60' R/W streets, at intersecting minor streets, shall be 250 watt, series circuit, 6.6 amp., I.E.S. Distribution Type 2, General Electric Catalog C706G043, Type M-250R or approved equal.

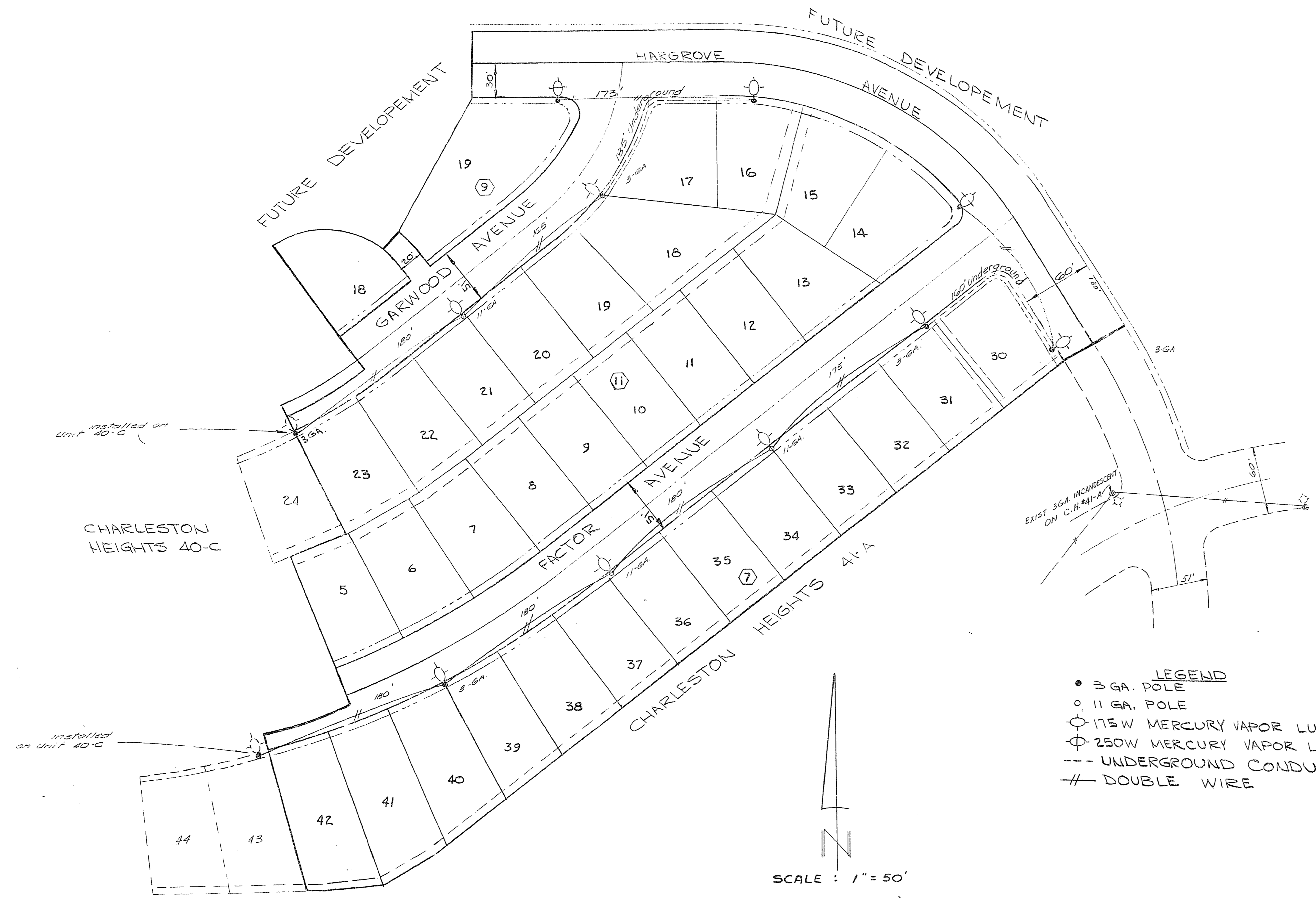
Mercury Vapor Lamps to be used on 51' R/W or 60' R/W streets at intersecting minor streets, shall be 250 W Colortone Hi-output white, 12600 lumens, Westinghouse Catalog #H37-30K/W or approved equal.  
 Mercury Vapor Luminaires to be used on 80' R/W streets and over, shall be 400 watt, series circuit, 6.6 amp., I.E.S. Distribution Type 3, General Electric Catalog C704G010 Type M-400, mounted with a 2" slip-fitter, or approved equal.

Mercury Vapor Lamps to be used on 80' R/W streets and over shall be 400 watt, Colortone Hi-output white, 24000 lumens, Westinghouse Catalog #H33-1-G/W or approved equal.  
 Spacing of standards shall be 180 feet maximum on 51' R/W and 60' R/W streets on one side.  
 Spacing of standards shall be 180 feet maximum on 80' R/W streets on both sides, staggered.  
 Spacing of standards on 100' R/W streets or more shall be 120' maximum on both sides and staggered.

The contractor shall be responsible for avoiding damage to property, either public or private, and, in the event any such damage, shall make satisfactory repairs at his own expense.  
 Standards shall receive two (2) finish coats of an approved aluminum paint. The first coat shall be applied prior to erection. The second shall be applied after erection.  
 Handhole modifications, equal in size to Mod. 2-C (20 square inch minimum opening) shall be provided on all standards requiring underground wiring.

Underground conduit shall be rigid wrapped and shall meet all requirements of the City of Las Vegas. A minimum of 1 inch diameter for single wire and 1-1/4 inch for 2-wire installations shall be used. At the discretion of the Field Engineer, an approved P.V.C. conduit may be substituted, but only under those areas which at no time will be subject to wheel traffic.  
 The contractor shall furnish complete service to transformers and control systems if required.  
 The feed in location is shown subject to availability of power at said location when needed.  
 Standards used on 51' R/W streets to be set 26.5' from center line of street (within 3' utility easement).  
 Standards used on 60' R/W streets and (41' B.C. to B.C.) to be set 26.5' from center line of street (bet. property line and back edge of sidewalk).  
 Standards used on 60' R/W streets and (50' B.C. to B.C.) to be set 31' from center line of street (within 3' utility easement).  
 Standards used on 80' R/W and over to be set 18" back of curb.

Rev. 8-1-62



- LEGEND**
- 3 GA. POLE
  - 11 GA. POLE
  - ⊙ 175W MERCURY VAPOR LUMINAIRES
  - ⊙ 250W MERCURY VAPOR LUMINAIRES
  - UNDERGROUND CONDUIT
  - == DOUBLE WIRE

**REQ'D**

(7)
(3)
(9)
(2)

**REVISION APPROVALS**

City Engineer: *[Signature]* DATE: 8/5/62

City Electrician: *[Signature]* DATE: 12-31-62

**APPROVALS**

City Engineer: *[Signature]* 10-25-62

Nebraska Power Co.: *[Signature]* 8-13-62

2	5-4-62	Moved Lights to S.S. on Hargrove	OK	W.A.B.
1	12-15-62	MOVED LIGHTS TO N.S. ON HARGROVE	OK	
REV.	DATE	DESCRIPTION	BY	APPRD.

**CHARLESTON HEIGHTS TRACT No. 41-C STREET LIGHT PLAN**

DESIGNED BY: *[Signature]*  
 DRAWN BY: RCR  
 CHECKED: *[Signature]*  
 WESTERN ENGINEERS, INC. LAS VEGAS, NEVADA  
 APPROVED: *[Signature]* DATE: 8-20-62