

**APPROVALS**

*[Signature]* 4-29-64  
CITY ENGINEER DATE

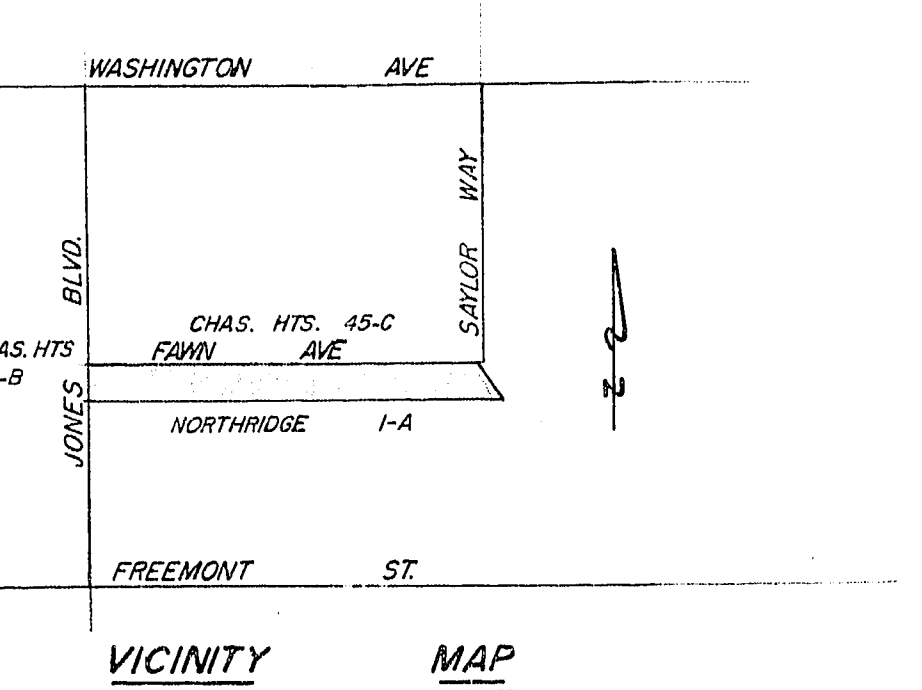
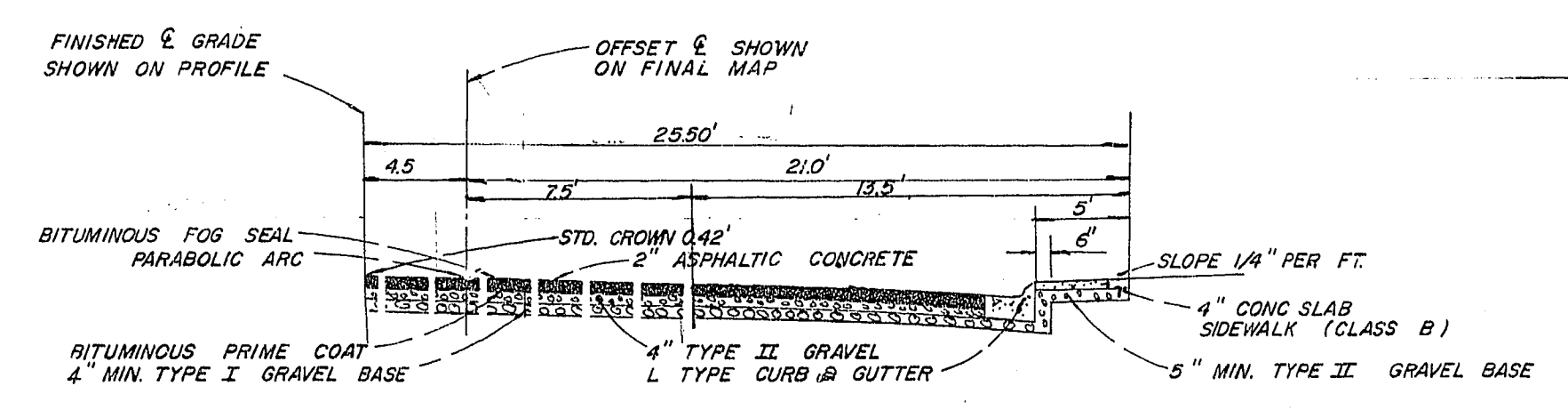
*[Signature]* 4-29-64  
FIELD ENGINEER DATE

**B.C.R. DATA**

NO.	RADIUS	DELTA	TAN.	CHD.	LEN.
1	65.00'	45-12-32	27.06'	49.97'	51.29'
3	30.00'	36-52-12	10.00'	18.37'	19.31'

**ESTIMATED QUANTITIES**

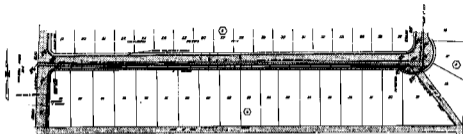
2" AC PAVING	807 SQ. YD.
SIDEWALK	655.4 SQ. FT.
CURB & GUTTER (L TYPE)	1115 LIN. FT.
SEWER 4" ACP	289 LIN. FT.
WATER 3/4" COPPER SERVICES	18
<b>BENCH MARK</b>	



- NOTES**
- FOR EXIST. STREET IMPROVEMENTS ON FAWN AVE & JONES BLVD. SEE C.L.V. APPROVED DRAWING FOR CHARLESTON HEIGHTS 45-C SUBMITTED BY WESTERN ENGINEERS INC.
  - FOR WATER & LIGHTING SEE PLANS FOR CHARLESTON HEIGHTS 45-C

SPIKE IN PP APPROX. 75' SW. OF CURB AT INTERSECTION OF JONES BLVD & FREMONT ST. ELEV. = 2301.88

D					
C					
B					
A	TAPR 64	MINOR CORRECTIONS	R.L. WIL		
REV.	DATE	DESCRIPTION	BY	APPR.	
<b>CHARLESTON HEIGHTS TRACT 45-D</b>					
<b>STREET PLAN &amp; PROFILE</b>					
SCALE— 1" = 50' Horiz. — 1" = 5' Vert.					
DESIGNED	WIL	WESTERN ENGINEERS, INC.		SHEET 1	
DRAWN	R.L.	LAS VEGAS	NEVADA		
CHECKED	gaw	APPROVED <i>[Signature]</i> DATE 4/26/64		OF 1	



LARY AVENUE

*Handwritten notes and signatures*

NO.	DESCRIPTION	AMOUNT	TOTAL

APPROVED  
 DATE  
 BY  
 TITLE



NO.	DESCRIPTION	AMOUNT	TOTAL

871-480-80