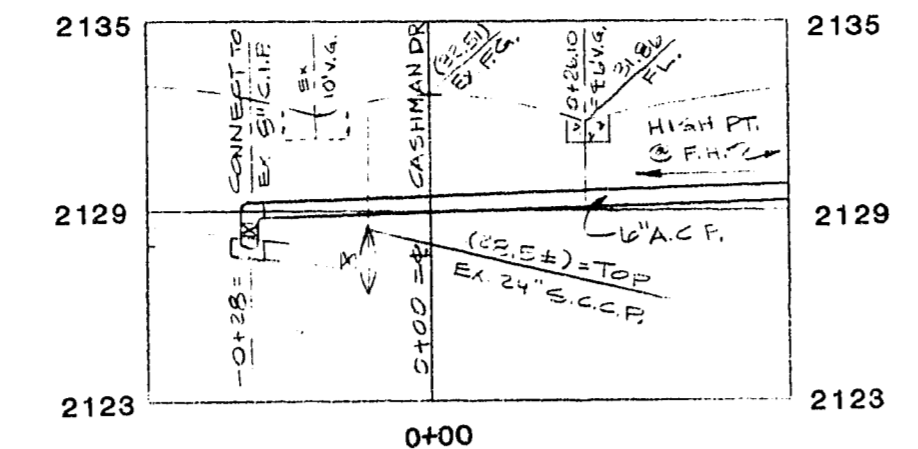


GENERAL WATER NOTES

1. ALL WORK TO CONFORM TO LAS VEGAS VALLEY WATER DISTRICT STANDARD PLATES.
2. ALL WORK, EXCEPT AS MODIFIED HEREON OR BY NOTE NO. 1 SHALL BE DONE IN ACCORDANCE WITH THE MOST CURRENT DRAFT OR EDITION OF UNIFORM STANDARD SPECIFICATIONS FOR PUBLIC WORKS CONSTRUCTION, OFFSITE IMPROVEMENTS, CLARK COUNTY AREA.
3. NOTICE TO BE GIVEN ENGINEERING DEPARTMENT OF THE LAS VEGAS VALLEY WATER DISTRICT 48 HOURS PRIOR TO ACTUAL CONSTRUCTION.
4. SERVICE SADDLES OR TAPPED COLLARS WILL BE REQUIRED ON 3/4" AND 1" SERVICE LATERALS. SERVICE SADDLES ONLY WILL BE PERMITTED ON 1 1/2" AND 2" SERVICE LATERALS.
5. ALL LINES TO BE PRESSURE TESTED TO 200 PSI.
6. ALL VALVE BOXES SHALL HAVE CONCRETE COLLARS AT SURFACE OF PAVED AREAS.
7. DEFLECTION ANGLE SHALL NOT EXCEED 2 1/2 DEGREES PER 13 FOOT SECTION OF PIPE FOR PIPE SIZES SMALLER THAN 14 INCHES AND SHALL NOT EXCEED 2 DEGREES FOR PIPE SIZES BETWEEN 14" AND 16".
8. ALL METERS SHALL BE LOCATED OUTSIDE OF DRIVEWAYS.
9. PIPE LOCATOR RIBBON SHALL BE INSTALLED OVER ALL ASBESTOS CEMENT PIPE IN ACCORDANCE WITH STANDARD PLATE NO. 27 WHERE INDICATED AND AS FOLLOWS:
 - A. OVER ALL MAINS NOT INSTALLED AT 6 FEET FROM BACK OF CURB.
 - B. OVER ALL SERVICE LATERALS NOT INSTALLED AT RIGHT ANGLE TO THE MAIN.
10. FOR CURVED LINES WITH RADIUS BETWEEN 155' AND 300', 6'-6" LENGTHS OF PIPE MUST BE USED. FOR CURVED LINES OF LESS THAN 155', 3'-3" LENGTHS OR FITTINGS MUST BE USED.



WATER MAIN CONNECTION PROFILE

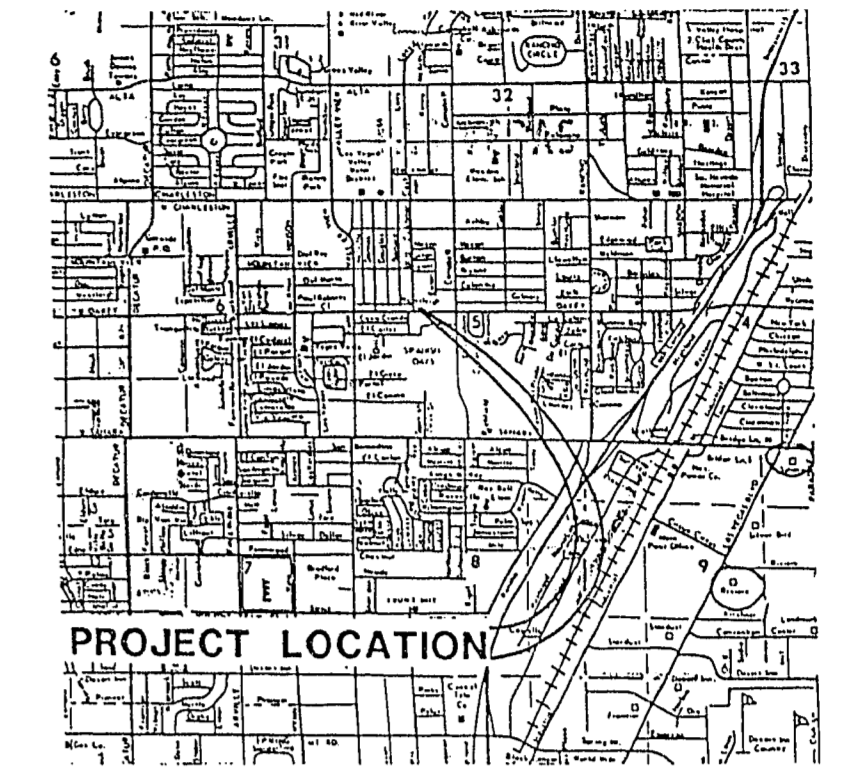
SPECIAL SEWER NOTES

1. SAWCUT OR CORE DRILL 27-INCH R.C.P. FOR 6-INCH P.V.C. CONNECTION. ABSOLUTELY NO JACK HAMMERING OR CHIPPING.
2. CONNECT 6-INCH P.V.C. TO TOP SECTION OF 27-INCH R.P.C. BETWEEN SPRINGLINE AND TOP OF PIPE.
3. DO NOT USE SADDLE AND DO NOT ALLOW 6-INCH P.V.C. TO PROTRUDE BEYOND INSIDE WALL OF 27-INCH R.C.P.
4. SEAL OPENING AROUND 6-INCH P.V.C. WITH CONCRETE.

SEWER LATERAL CERTIFICATE

I, EDmund J. WOJCIK, P.E., DO HEREBY CERTIFY THAT THE SEWER LATERALS FOR THIS PROJECT WERE BUILT ESSENTIALLY ACCORDING TO THIS PLAN.

Edmund J. Wojcik, P.E. 9-28-88
EDMUND J. WOJCIK, P.E. DATE



VICINITY MAP
NO SCALE

QUANTITY ESTIMATE

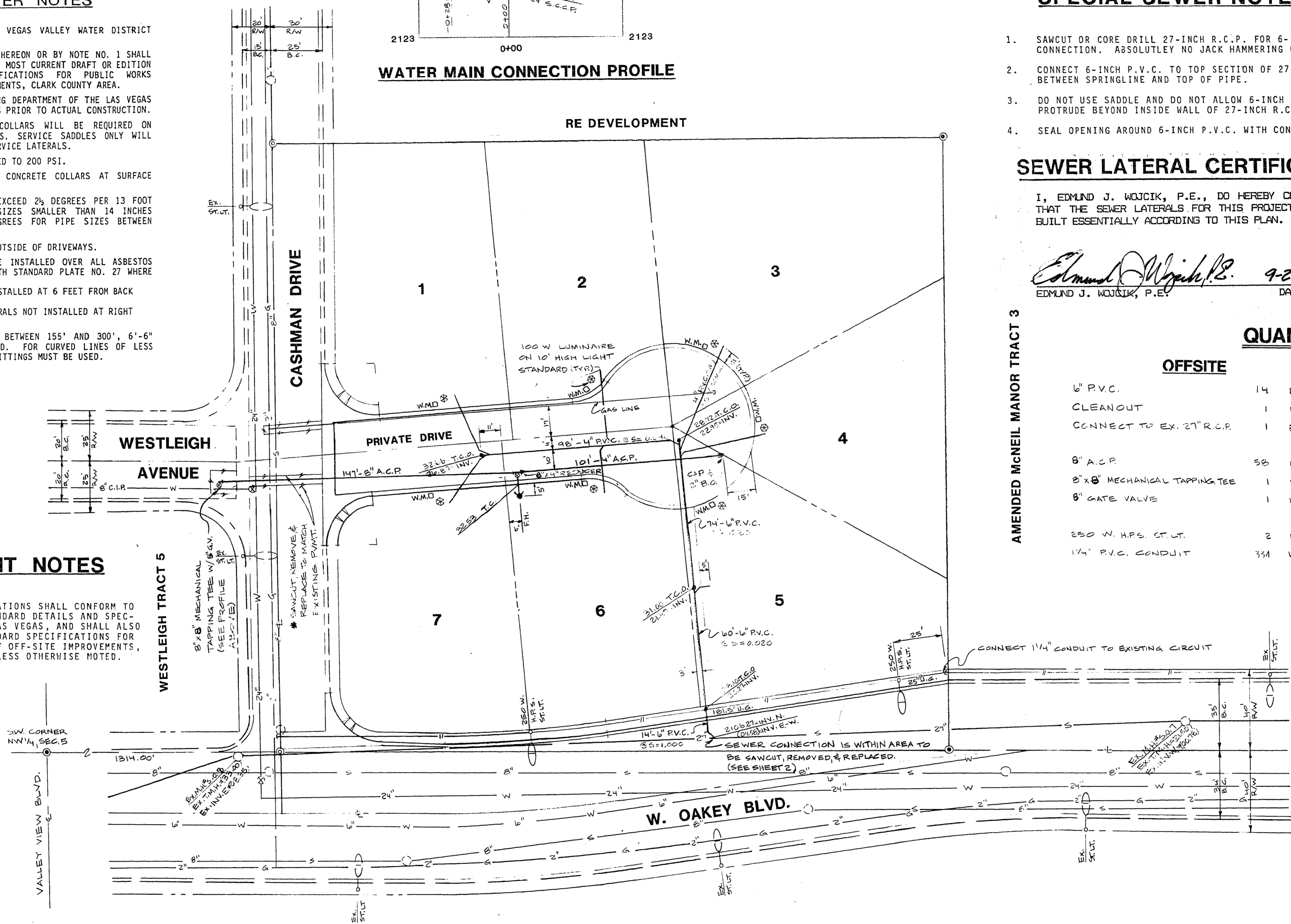
	OFFSITE	ONSITE
6" P.V.C.	14 L.F.	6" P.V.C. 148 L.F.
CLEANOUT	1 EA.	CLEANOUT 3 EA.
CONNECT TO EX. 27" R.C.P.	1 EA.	4" P.V.C. (LATERALS @ 500) 330 L.F.
8" A.C.P.	58 L.F.	8" A.C.P. 89 L.F.
8" x 8" MECHANICAL TAPPING TEE	1 EA.	4" A.C.P. 101 L.F.
8" GATE VALVE	1 EA.	3/4" WATER SERVICE 7 EA.
250 W. H.P.S. ST. LT.	2 EA.	FIREHYDRANT ASSEMBLY 1 EA.
1 1/4" P.V.C. CONDUIT	334 L.F.	100 W. LUMINAIRE 7 EA.
		10' HIGH LIGHT STANDARD 7 EA.

LEGEND

T.C.O.	TOP OF CLEANOUT
INV.	INVERT
P.V.C.	POLYVINYL CHLORIDE PIPE
T.C.	TOP OF CURB
F.H.	FIREHYDRANT
A.C.P.	ASBESTOS CEMENT PIPE
250 W.	250 WATT
H.P.S.	HIGH PRESSURE SODIUM LUMINAIRE
EX.	EXISTING
U.G.	1 1/4" UNDERGROUND CONDUIT
ST.L.T.	11 GAUGE STREET LIGHT STANDARD
R.C.P.	REINFORCED CONCRETE PIPE
G.V.	GATE VALVE
TYP.	TYPICAL
M.H.	MANHOLE
W.M.	WATER METER

STREET LIGHT NOTES

ALL STREET LIGHTING INSTALLATIONS SHALL CONFORM TO THE LATEST ISSUE OF THE STANDARD DETAILS AND SPECIFICATIONS OF THE CITY OF LAS VEGAS, AND SHALL ALSO CONFORM TO THE UNIFORM STANDARD SPECIFICATIONS FOR PUBLIC WORKS CONSTRUCTION OF OFF-SITE IMPROVEMENTS, CLARK COUNTY AREA, 1978, UNLESS OTHERWISE NOTED.



GENERAL SEWER NOTES

1. HOUSE SERVICES SHALL COMPLY WITH WESTERN PLUMBING CODE AS TO SEPARATION DISTANCE.
2. ALL HOUSES TO BE SERVED INDIVIDUALLY AS PER SECTION 313 OF THE UNIFORM PLUMBING CODE.
3. CONTRACTOR SHALL FURNISH THE ENGINEER WITH AS-BUILT DRAWINGS SHOWING THE EXACT LOCATIONS OF ALL HOUSE CONNECTIONS.
4. CONCRETE COLLARS TO BE CONSTRUCTED AROUND ALL MANHOLES AND WATER VALVES.
5. CHISEL S OR G WHEREVER SEWER OR GAS LINES PASS UNDER CURB.

GENERAL UTILITY NOTES

1. POWER SERVICE TRENCHING, BACKFILLING, AND CONDUIT INSTALLATION SHALL BE PERFORMED IN STRICT ACCORDANCE WITH PLANS BY NEVADA POWER COMPANY.
2. TELEPHONE SERVICE CONDUIT INSTALLATION SHALL BE PERFORMED IN STRICT ACCORDANCE WITH PLANS BY CENTRAL TELEPHONE COMPANY.
3. CABLE TELEVISION SERVICE CONDUIT INSTALLATION SHALL BE PERFORMED IN STRICT ACCORDANCE WITH PLANS BY COMMUNITY CABLE TELEVISION COMPANY.
4. WATER SERVICE TRENCHING, BACKFILLING, AND CONDUIT BOX, AND METER INSTALLATION AND ADJUSTMENT SHALL BE PERFORMED IN STRICT ACCORDANCE WITH LAS VEGAS VALLEY WATER DISTRICT STANDARD PLATES.

BENCH MARK

C.L.V.B.M. 1615B22 BOLT & PLATE IN N.W. CORNER OF WESTLEIGH AVENUE & CASHMAN DRIVE
ELEVATION: 2132.167

* NOTE:
UTILITY CUTS ON CASHMAN DRIVE REQUIRE C.L.V. OFFSITE PERMIT.

Name of Plan Cashman Court
Subdivision
Water plan as shown will be acceptable. It is NOT approved for construction.
Michael P. Reago 7/11/86
LVVWD Date

DEVELOPER

CAROL PAPPAS, ET. AL.
1224 CASHMAN DRIVE
LAS VEGAS, NEVADA 89102
TELE: (702) 878-4525

APPROVAL

Edmund J. Wojcik 8-29-86
CLV CHIEF, LAND DEVELOPMENT & FLOOD CONTROL DATE

NO.	DATE	DESCRIPTION	APPROVED
1	10/11/86	CHANGE WATER MAIN TO NORTH SIDE BLVD	<i>[Signature]</i>

E. J. WOJCIK ENGINEERING
CIVIL ENGINEERING CONSULTANTS
3015 W. WASHINGTON AVE., SUITE 7
LAS VEGAS, NEVADA 89108
Edmund J. Wojcik, P.E.
(702) 369-8707

CASHMAN COURT SUBDIVISION
(MASTER UTILITY PLAN)
---Sewer Lateral As-Built---

(V) SCALE: N/A
(H) SCALE: 1"=30'
J.N.: 850401
DRAWN BY: TMC
CHECKED BY: E.J.W.

SHEET NO.:
4 OF 4