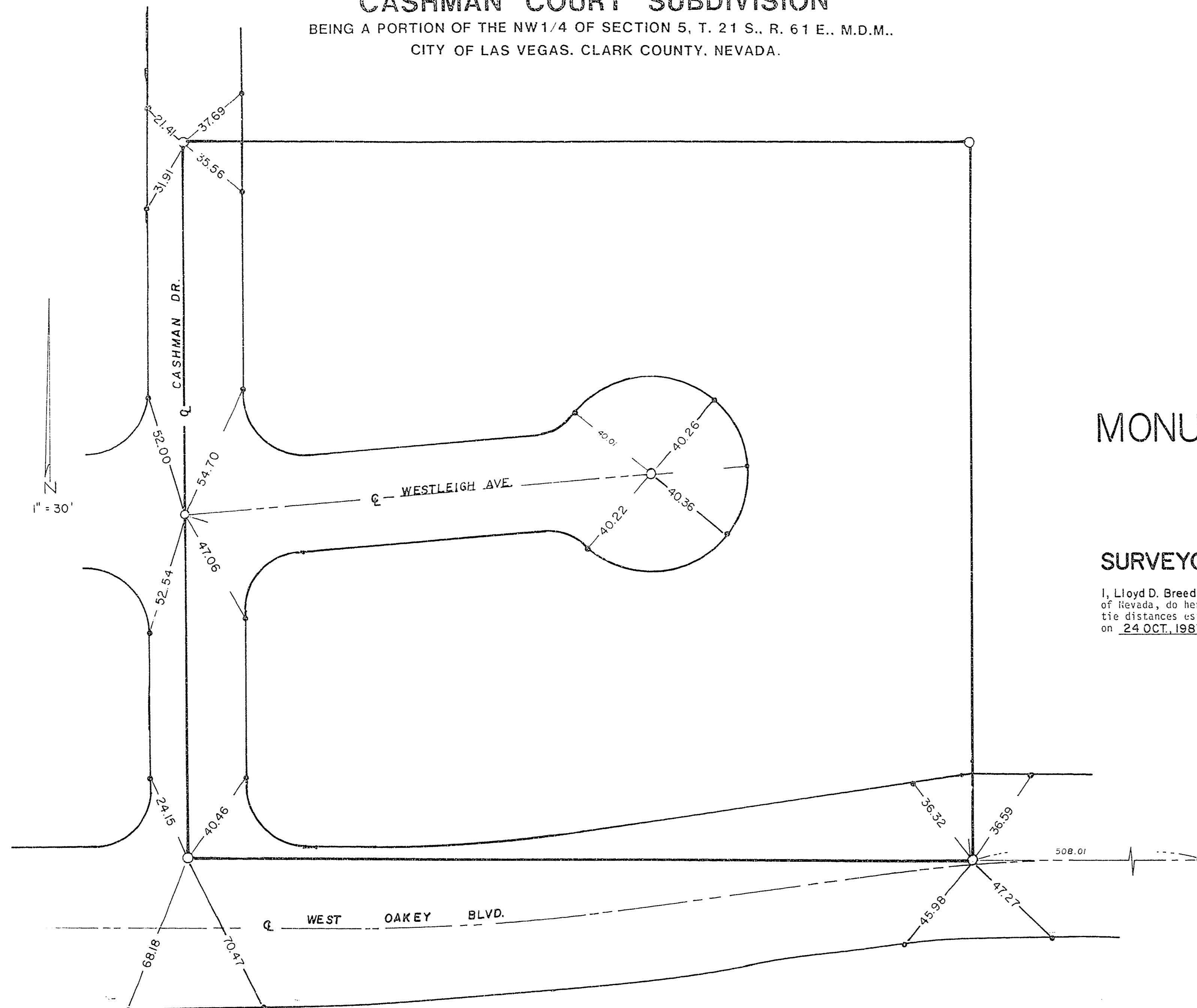


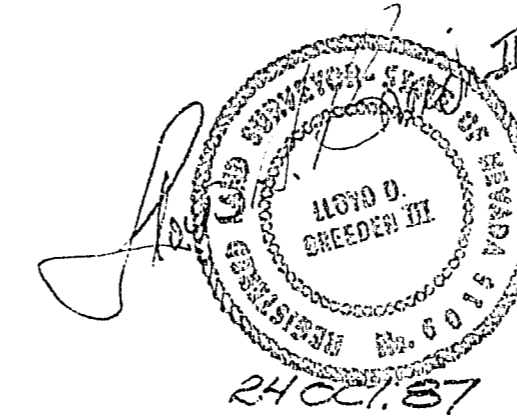
**CASHMAN COURT SUBDIVISION**  
 BEING A PORTION OF THE NW1/4 OF SECTION 5, T. 21 S., R. 61 E., M.D.M.,  
 CITY OF LAS VEGAS, CLARK COUNTY, NEVADA.



**MONUMENTATION TIE MAP**

**SURVEYORS CERTIFICATE**

I, **Lloyd D. Breeden III**, a duly registered land surveyor in the State of Nevada, do hereby certify that the monuments have been set and the tie distances established as shown hereon. This survey was completed on **24 OCT, 1987**.



**LEGEND**

- 5/8" Rebar & Al. Cap R.L.S. 6015
- SET BRASS CAP IN TOP OF CURB, STAMPED R.P. OUT DISTANCE

	SCALE (H)	SCALE (V)
	DES.	
	DR.	
	CHK. BY:	
	JOB NO. 1986-86	
SHEET 1	OF	

1-6-83

058-1032