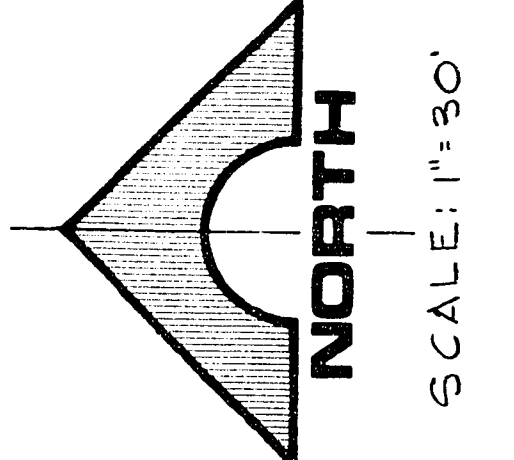
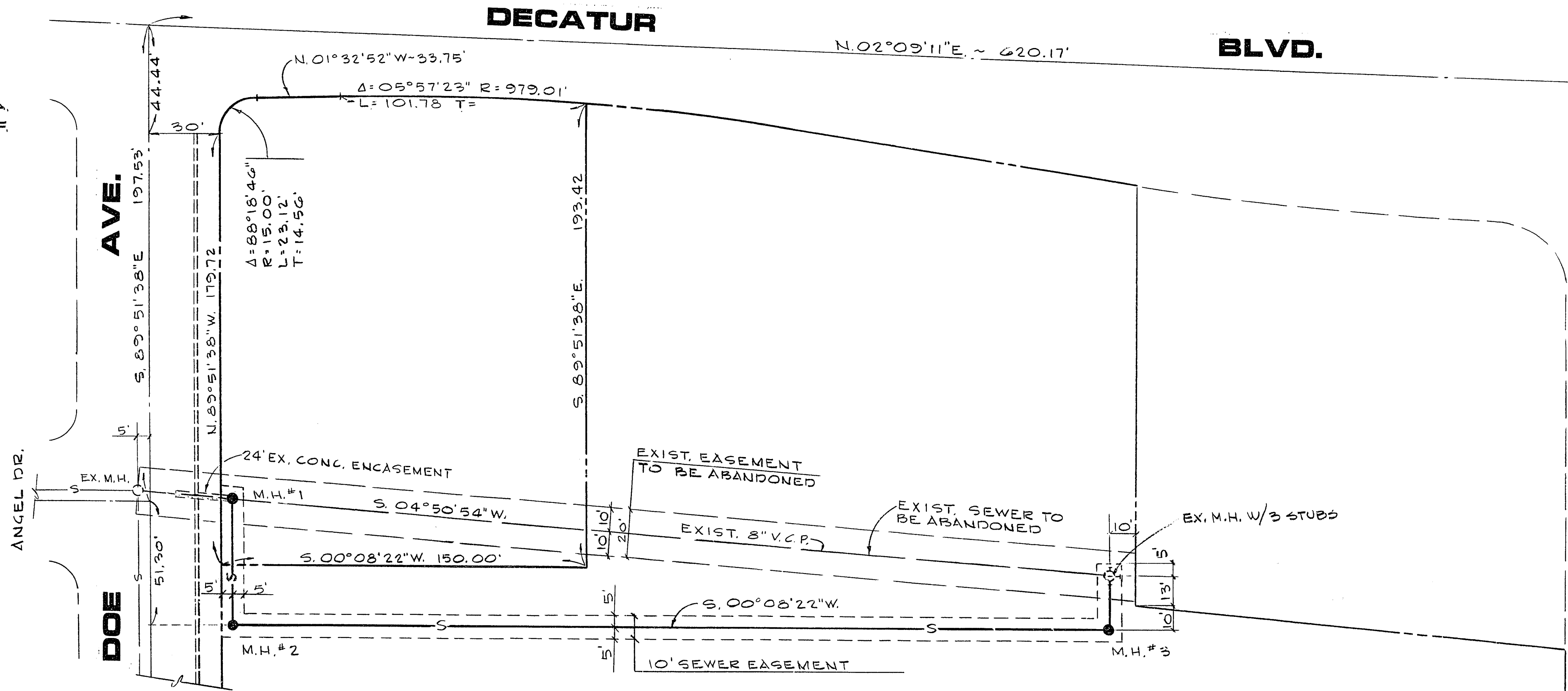


REV	DATE	DESCRIPTION
3	9/15/82	R.E. NO. 7 DATE
2		
1		

PROFILE
SCALE: HORIZ. 1"=30'
VERT. 1"=3'

ESTIMATE OF QUANTITIES

STANDARD MANHOLE 8" VCP 3 EA. 437 L.F.



BENCH MARK
B.M. #1601A12 PUNCHED BOLT IN T.C. 9' WEST OF W.N.W. RET. AT DOE AVE. & DECATUR BLVD. ELEV. 2211.44

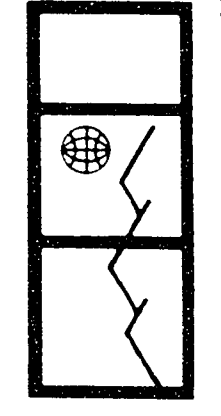
APPROVALS

CE Zepi 9-17-82
C.L.V. ENGINEER DATE

N/A
C.L.V. TRAFFIC ENGINEER DATE

R.D. Anton 9-16-82
C.L.V. SANITATION ENGINEER DATE

William Chubb 9/16/82
C.L.V. QUALITY CONTROL ENGR. DATE



G.C. WALLACE
Consulting Engineers, Inc.
1100 East Sahara Ave. - Las Vegas, Nevada 89104 - 732-3330

BECKER
DECATUR & OAKY
SEWER LOCATION PLAN

SHEET
1
OF 1 SHEETS

JOB NO. 301.02B

Call before you Dig.
1-800-227-2600
UNDERGROUND SERVICE ALERT USA
9/78 DIETRICH-POST 6330

21-1-52 301-V553